



# PARTS CATALOG

**898 (1.50 RATIO) 1228 (1.50 RATIO) 1250 (1.32 RATIO)**

## SERIAL NUMBER

250 1977 ..... 4791300 THRU 4898729  
898/228 1977 ..... 4782330 THRU 4898729

# TABLE OF CONTENTS:

BELL HOUSING ASSEMBLY .....	8
DRIVE SHAFT HOUSING ASSEMBLY AND GEAR ASSEMBLY .....	10
GEAR HOUSING ASSEMBLY .....	18
GEAR HOUSING ASSEMBLY, COMPLETE .....	14
GIMBAL HOUSING ASSEMBLY .....	4
GIMBAL RING ASSEMBLY AND STEERING LEVER .....	6
HYDRAULIC PUMP AND TRIM INDICATOR CONTROL PANEL .....	24
HYDRAULIC PUMP ASSEMBLY, COMPLETE .....	20
PARTS INDEX .....	36
POWER STEERING KIT .....	28
POWER TRIM CYLINDER REPAIR KITS .....	34
SHIFT BRACKET AND REVERSE LOCK VALVE .....	30
TRANSOM PLATE AND SHIFT CABLE .....	2
TRIM CYLINDERS AND HYDRAULIC HOSES .....	22

**NOTE:** *Indented description indicate that these parts are included in preceeding assembly.*

**AR** = As Required

**NSS** = Not Sold Separate

**OPT** = Optional

**NS** = Not Shown

**THESE PARTS BOOKS/FICHE CARD ARE COPYRIGHTED AND MAY NOT BE DISTRIBUTED OR REPRODUCED IN ANY OTHER FORMAT BY ANYONE OTHER THAN MERCURY MARINE WITHOUT THE PRIOR WRITTEN CONSENT OF MERCURY MARINE.**

# **REPLACEMENT PARTS ! WARNING !**

Electrical, ignition and fuel system components on MerCruiser Engines and Stern Drives are designed and manufactured to comply with U.S. Coast Guard Rules and Regulations to minimize risks of fire or explosion. Use of replacement electrical, ignition or fuel system components, which do not comply to these rules and regulations, could result in a fire or explosion hazard and should be voided.

When servicing the electrical, ignition and fuel systems, it is extremely important that all components are properly installed and tightened. If not, any electrical or ignition component opening would permit sparks to ignite fuel vapors from fuel system leaks, if they existed.

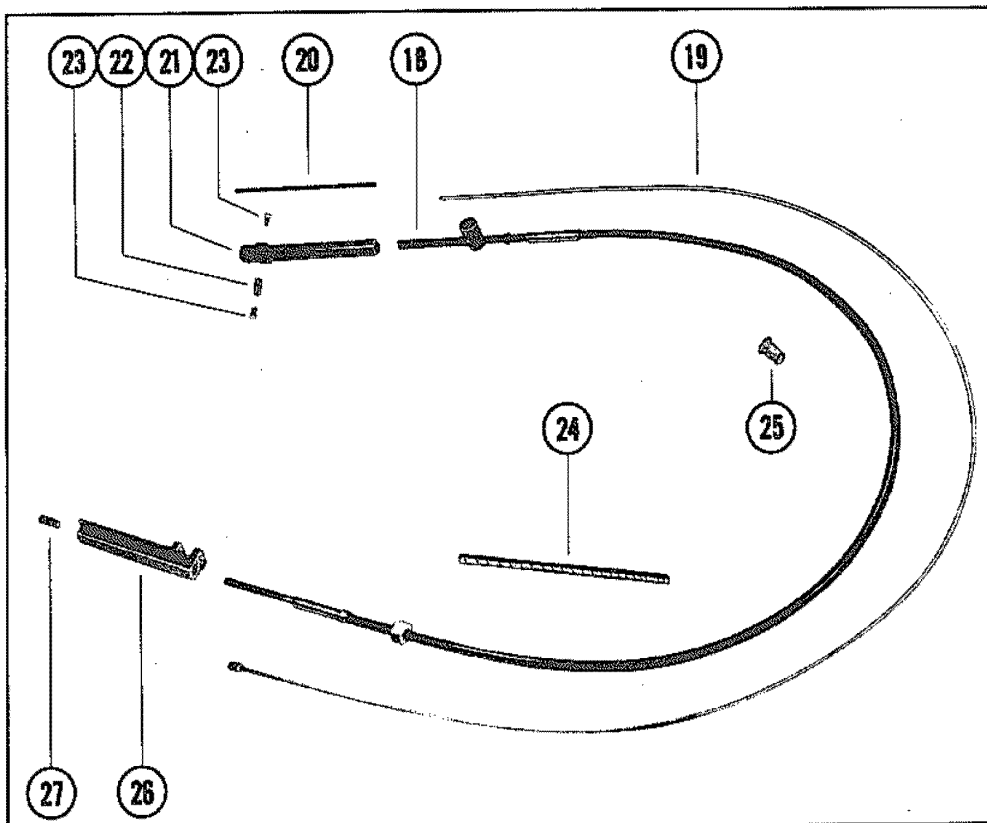
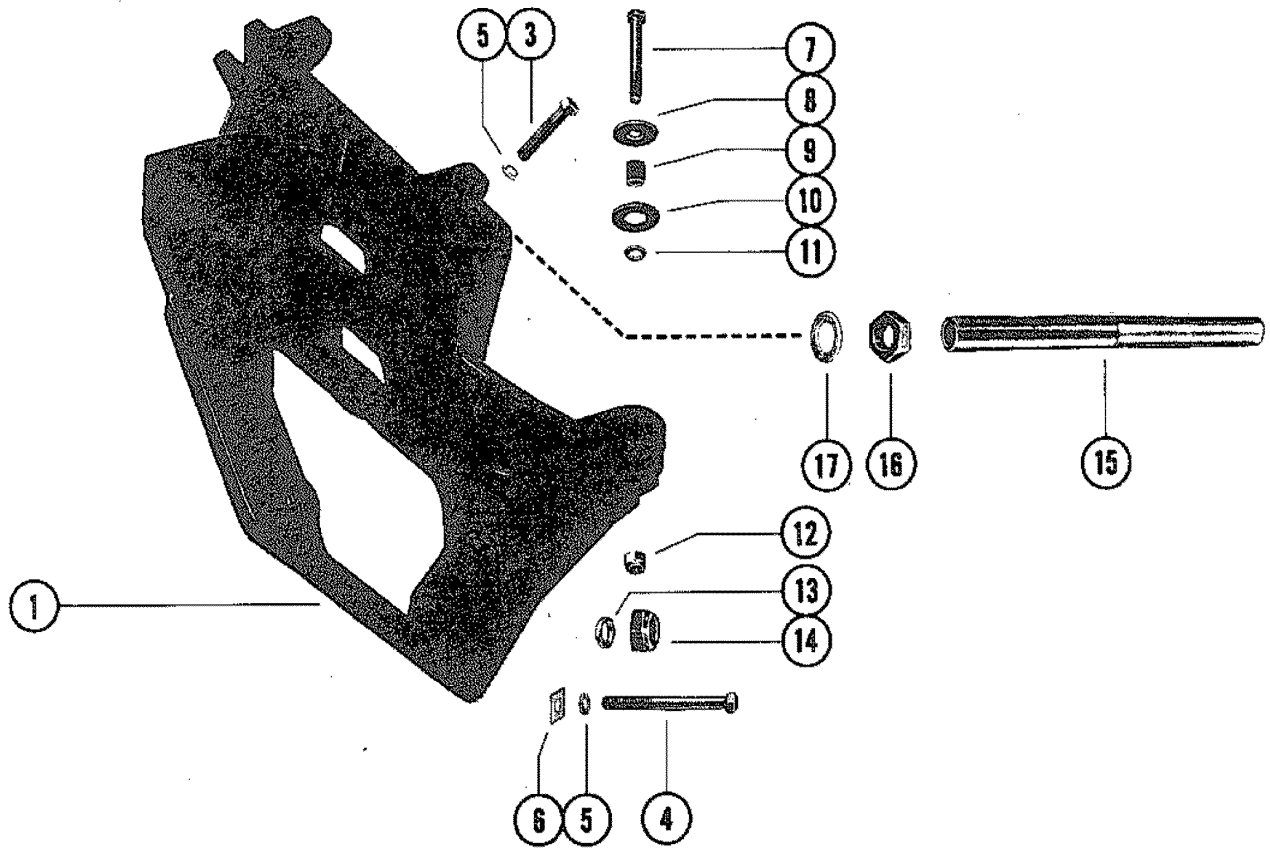
## **ENGINE MECHANICAL COMPONENTS**

Many of the engine mechanical components are designed for marine applications. Unlike automotive engines, marine engines are subjected to extended periods of heavy load and wide- open-throttle operation, therefore, require heavy-duty components. Special marine engine parts have design and manufacturing specifications, which are required to provide long life and dependable performance. Marine engine parts also must be able to resist the corrosive action of salt or brackish water that will rust or corrode standard automotive parts within a short period of time.

Failure to use recommended Mercury Precision Parts OR Quicksilver service replacement parts can result in poor engine performance and/or durability, rapid corrosion of parts subjected to salt water and possibly complete failure of the engine.

Use of parts other than recommended service replacement parts will void the warranty on those parts which are damaged as a result of the use of other than recommended parts.

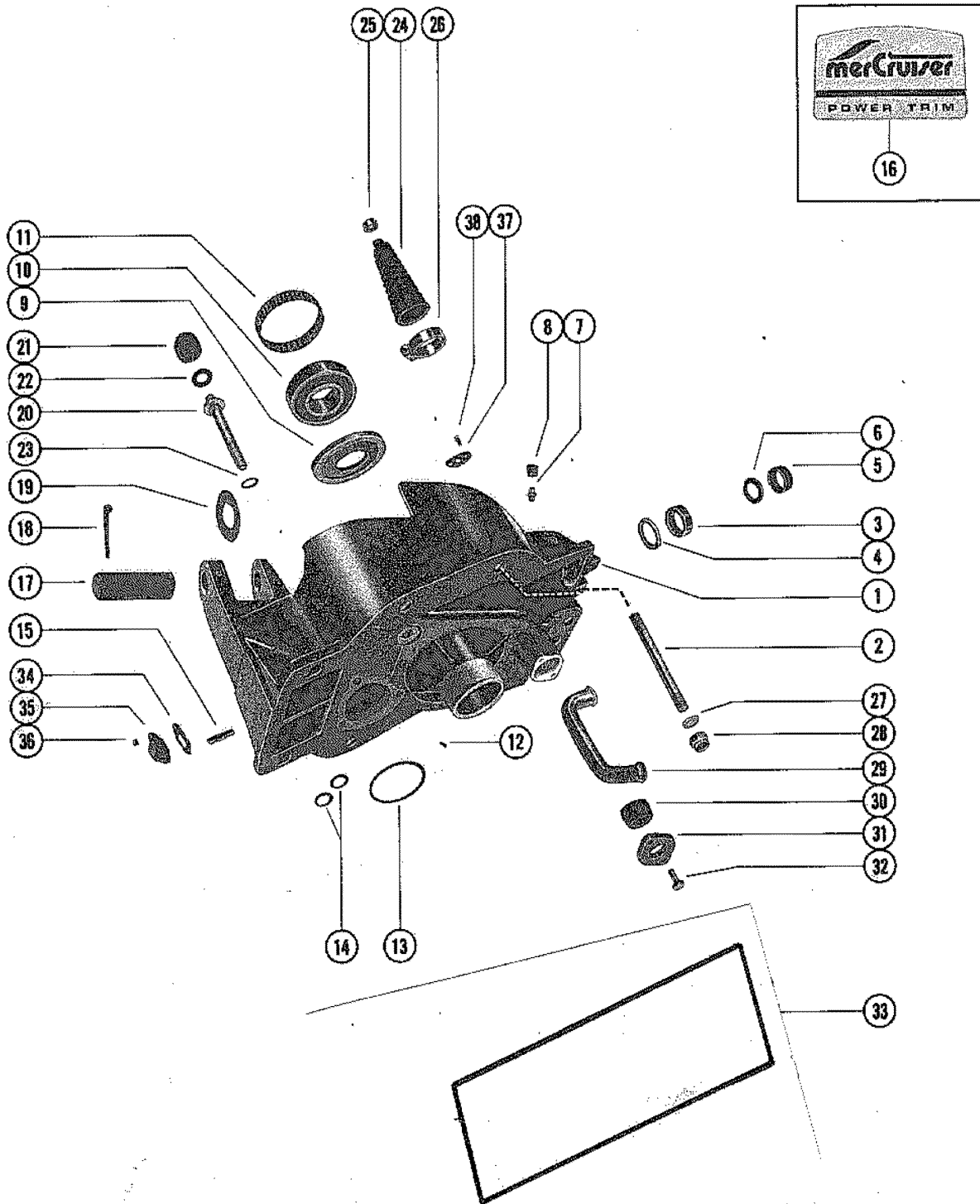
# TRANSOM PLATE AND SHIFT CABLE



## TRANSOM PLATE AND SHIFT CABLE

REF. NO.	PART NO.	SYM.	QTY.	DESCRIPTION
1	65545		1	PLATE, TRANSOM
3	10-37269		2	SCREW, TRANSOM PLATE TO GIMBAL HOUSING (2")
4	10-37268		2	SCREW, TRANSOM PLATE TO GIMBAL HOUSING (4 1/4")
5	13-37272		4	LOCKWASHER, TRANSOM PLATE SCREW
6	12-37271		2	WASHER, SQUARE - TRANSOM PLATE SCREW
7	10-36289		2	SCREW, TRANSOM PLATE TO FLYWHEEL HOUSING (4 3/4")
8	12-28421		2	WASHER, TRANSOM PLATE SCREW
9	23-36290		2	SPACER, TRANSOM PLATE SCREW
10	12-32834		2	WASHER, TRANSOM PLATE SCREW
11	13-33734A1		2	LOCKWASHER, TRANSOM PLATE SCREW
12	11-20220		2	NUT, TRANSOM PLATE TO ENGINE FLYWHEEL HOUSING SCREW
13	12-21900		2	WASHER, GIMBAL HOUSING TO TRANSOM PLATE BOLT
14	11-34087		2	NUT, GIMBAL HOUSING TO TRANSOM PLATE BOLT
15	75158		1	TUBE, STEERING CABLE GUIDE (7/8" O.D.) <b>NOT USED ON MERCUSIER 250</b>
16	11-37984		2	NUT, JAM - STEERING CABLE GUIDE TUBE <b>NOT USED ON MERCUSIER 250</b>
17	12-37985		2	WASHER, STEERING CABLE GUIDE TUBE <b>NOT USED ON MERCUSIER 250</b>
18	73679A2		1	CABLE ASSEMBLY, SHIFT ACTUATING
19	66069A2		1	CORE WIRE ASS'Y, INNER SHIFT CABLE
20	32-38377		1	TUBE, SHIFT ACTUATING CABLE
21	29880		1	GUIDE, SHIFT ACTUATING CABLE END
22	20007		1	ANCHOR, SHIFT ACTUATING CABLE END GUIDE
23	10-20518		2	SCREW, SET - ANCHOR TO SHIFT ACTUATING CABLE END GUIDE
24	38473		1	WRAPPING, SHIFT ACTUATING CABLE
25	32-34049		1	TUBE, NYLON - SHIFT ACTUATING CABLE GUIDE
26	33981		1	SLIDE, SHIFT ACTUATING CABLE
27	10-31700		1	SCREW, SET - SHIFT ACTUATING CABLE TO SLIDE

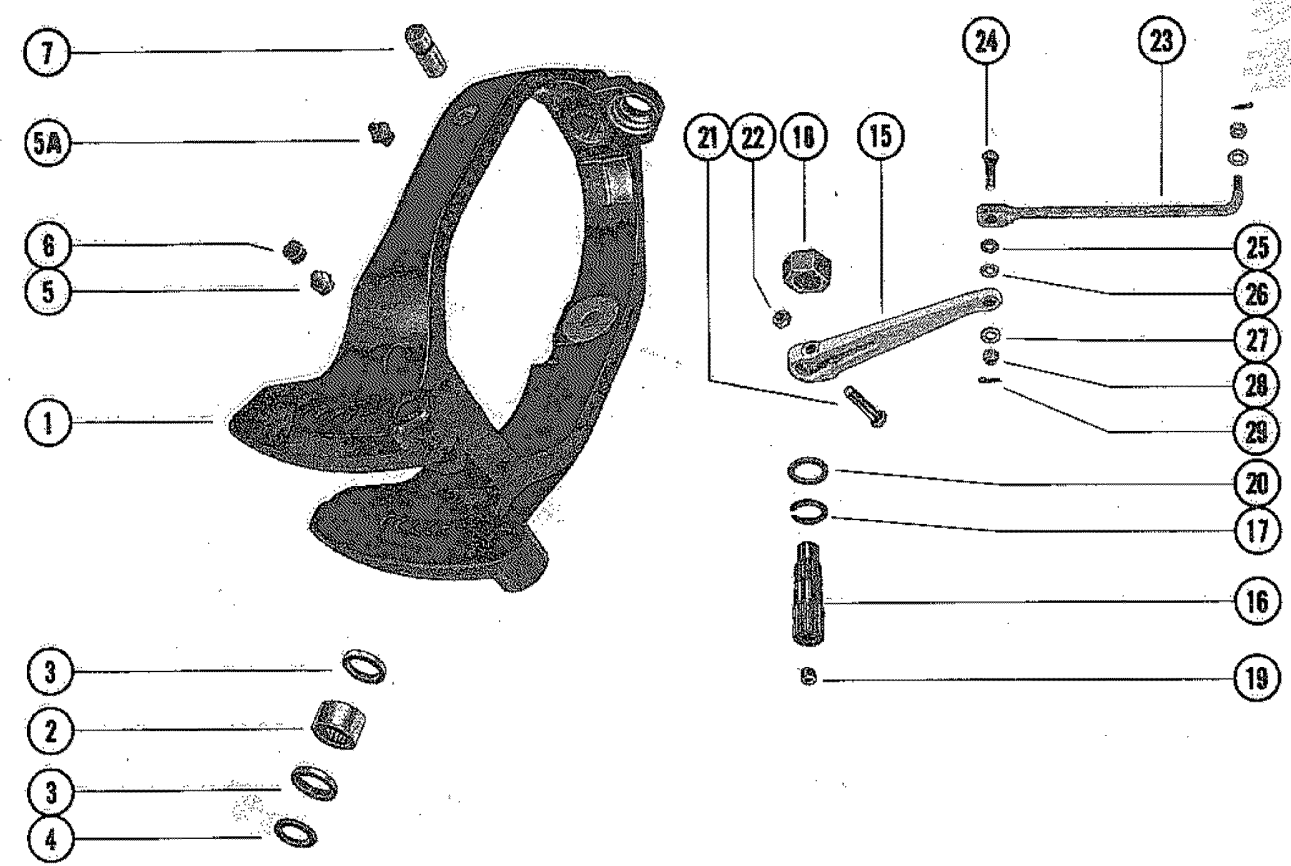
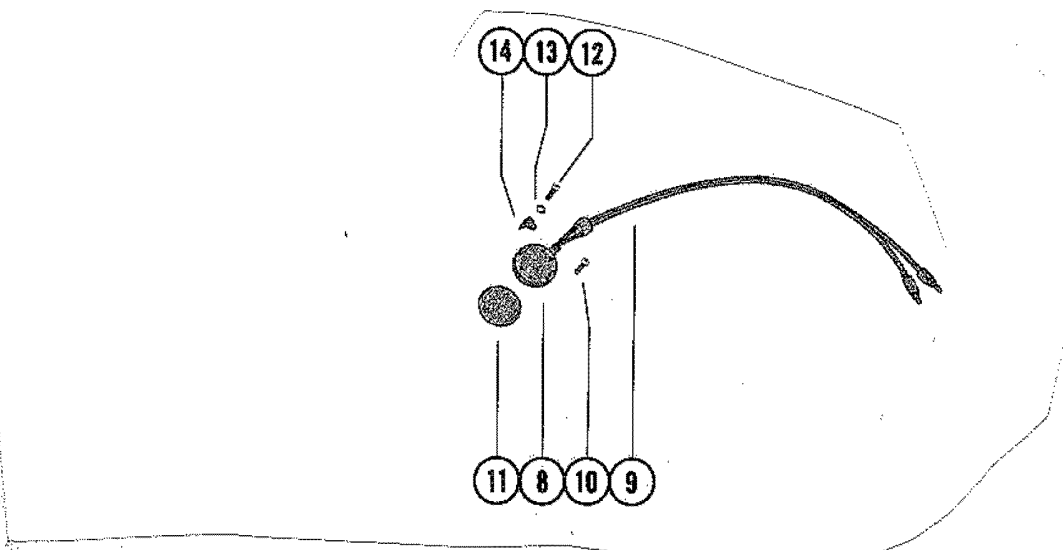
# GIMBAL HOUSING ASSEMBLY



# GIMBAL HOUSING ASSEMBLY

REF. NO.	PART NO.	SYM.	QTY.	DESCRIPTION
1	70862A1		1	GIMBAL HOUSING ASSEMBLY
2	16-56296		2	STUD, GIMBAL HOUSING TO TRANSOM PLATE (4 3/4")
3	31-32536		1	BEARING, ROLLER - GIMBAL HOUSING (LOWER)
4	26-32911		2	OIL SEAL, LOWER GIMBAL HOUSING ROLLER BEARING
5	31-21145		1	ROLLER BEARING, GIMBAL HOUSING (UPPER)
6	26-54925		1	OIL SEAL, UPPER GIMBAL HOUSING BEARING
7	22-74036		2	FITTING, GREASE - GIMBAL HOUSING (STAINLESS STEEL)
8	29359		2	LUBRICAP, GIMBAL HOUSING GREASE FITTING
9	26-36143		1	SEAL, GREASE - GIMBAL HOUSING
10	30-60794A2		1	BEARING ASSEMBLY, BALL - GIMBAL HOUSING
11	61075		1	TOLERANCE RING, GIMBAL HOUSING BEARING
12	10-25612		4	SCREW, DRIVE - GIMBAL HOUSING EXHAUST FLANGE
13	25-20863		1	"O" RING, GIMBAL HOUSING
14	25-23145		2	"O" RING, GIMBAL HOUSING
15	16-56766		2	STUD, HYDRAULIC CONNECTOR TO GIMBAL HOUSING
16	37-76733		1	DECAL, GIMBAL HOUSING
17	17-45212		1	PIN, SWIVEL - GIMBAL HOUSING TO GIMBAL RING (LOWER)
18	18-34212		1	COTTER PIN, RETAINING - LOWER SWIVEL PIN
19	12-32518		1	WASHER, GIMBAL HOUSING TO LOWER SWIVEL PIN
20	55989A1		2	BOLT ASSEMBLY, ANODIC - GIMBAL HOUSING TO TRANSOM PLATE
21	55989		2	ANODIC HEAD, BOLT ASSEMBLY
22	12-56085		2	WASHER, ANODIC BOLT ASSEMBLY
23	12-32620		2	WASHER, GIMBAL HOUSING BOLT
24	74639		1	BELLOWS, SHIFT ACTUATING CABLE
25	54-38863		1	CLAMP, ACTUATING CABLE BELLOWS TO SHIFT ACTUATING CABLE
26	54-31766		1	CLAMP, SHIFT ACTUATING CABLE BELLOWS TO GIMBAL HOUSING
27	12-34567		2	WASHER, GIMBAL HOUSING STUD
28	11-34933		2	NUT, GIMBAL HOUSING STUD
29	32-60542		1	TUBE, WATER - GIMBAL HOUSING
30	23-28055		1	BUSHING, RUBBER - WATER TUBE SEALING
31	32517		1	COVER, WATER TUBE SEALING BUSHING - GIMBAL HOUSING
32	10-28635		2	SCREW, WATER TUBE SEALING COVER TO GIMBAL HOUSING (5/8")
33	65533		1	SEAL, GIMBAL HOUSING TO TRANSOM
34	27-47644		1	GASKET, HYDRAULIC CONNECTOR
35	47347		1	CONNECTOR, HYDRAULIC - GIMBAL HOUSING
36	11-35888		2	NUT, GIMBAL HOUSING TO HYDRAULIC CONNECTOR STUD
37	57322		1	COVER, RETAINING - GIMBAL HOUSING
38	10-28635		2	SCREW, COVER TO GIMBAL HOUSING (5/8")

# GIMBAL RING ASSEMBLY AND STEERING LEVER

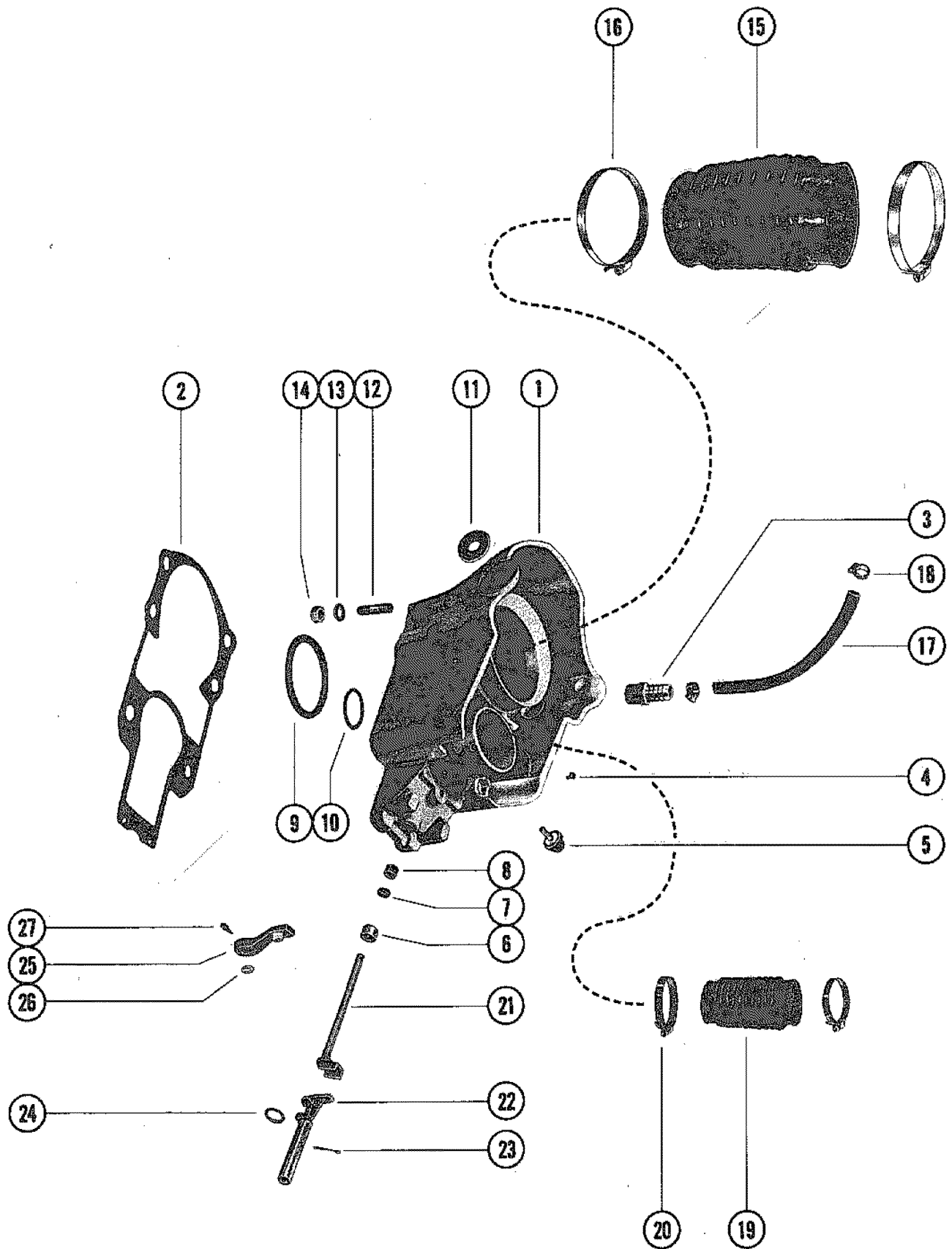




# GIMBAL RING ASSEMBLY AND STEERING LEVER

REF. NO.	PART NO.	SYM.	QTY.	DESCRIPTION
1	77124A2		1	GIMBAL RING ASSEMBLY
2	31-32538		1	BEARING, ROLLER - GIMBAL RING
3	26-32541		2	OIL SEAL, GIMBAL RING
4	23-39273		1	SPACER, GIMBAL RING
5	22-69059		1	FITTING, GREASE - GIMBAL RING (1/8-27)
5A	22-74036		2	FITTING, GREASE - GIMBAL RING (1/4-28)
6	29359		3	LUBRICAP, GIMBAL RING GREASE FITTING
7	77123		2	PIN, HINGE - THREADED (WITH GREASE GROOVE)
8	64947		1	SENDER, DUMMY (STARBOARD)
9	84-70967		1	HARNESS, DUMMY SENDER
10	10-46942		2	SCREW, HARNESS ATTACHING (5/16")
8	63115A2		1	SWITCH ASSEMBLY, TRIM LIMIT (PORT SIDE)
9	84-70968		1	HARNESS, TRIM LIMIT SWITCH
10	10-63400		2	SCREW, HARNESS ATTACHING (5/32")
11	85-63990		2	INSULATOR, SWITCH AND SENDER
12	10-37978		4	SCREW, SWITCH AND SENDER TO GIMBAL RING (3/4")
13	13-26996		4	LOCKWASHER, SWITCH AND SENDER SCREW
14	57008		4	RETAINER, SWITCH AND SENDER SCREW
15	66545		1	STEERING LEVER
16	65537		1	SHAFT, UPPER SWIVEL
17	53-72413		1	RETAINING RING, UPPER SWIVEL SHAFT
18	11-25599		1	NUT, UPPER SWIVEL SHAFT
19	22-32561		1	PLUG, PIPE - UPPER SWIVEL SHAFT
20	12-47683		1	WASHER, UPPER SWIVEL SHAFT (.031)
	12-32997		2	WASHER, UPPER SWIVEL SHAFT (.063)
21	10-32995		1	SCREW, STEERING LEVER TO UPPER SWIVEL SHAFT (2")
22	11-20696		1	NUT, STEERING LEVER TO UPPER SWIVEL SHAFT SCREW
23	66388A1		1	STEERING LINK ROD ASSEMBLY
24	10-66389		1	SCREW, LEVER TO LINK ROD
25	12-34966		1	WASHER, STEERING LINK ROD (NYLON)
26	13-54667		1	WASHER, SPRING - STEERING LINK ROD
27	12-20086		2	WASHER, STEERING LINK ROD (STEEL)
28	11-55438		2	NUT, STEERING LINK ROD
29	18-45882		2	COTTER PIN, LINK ROD AND SCREW

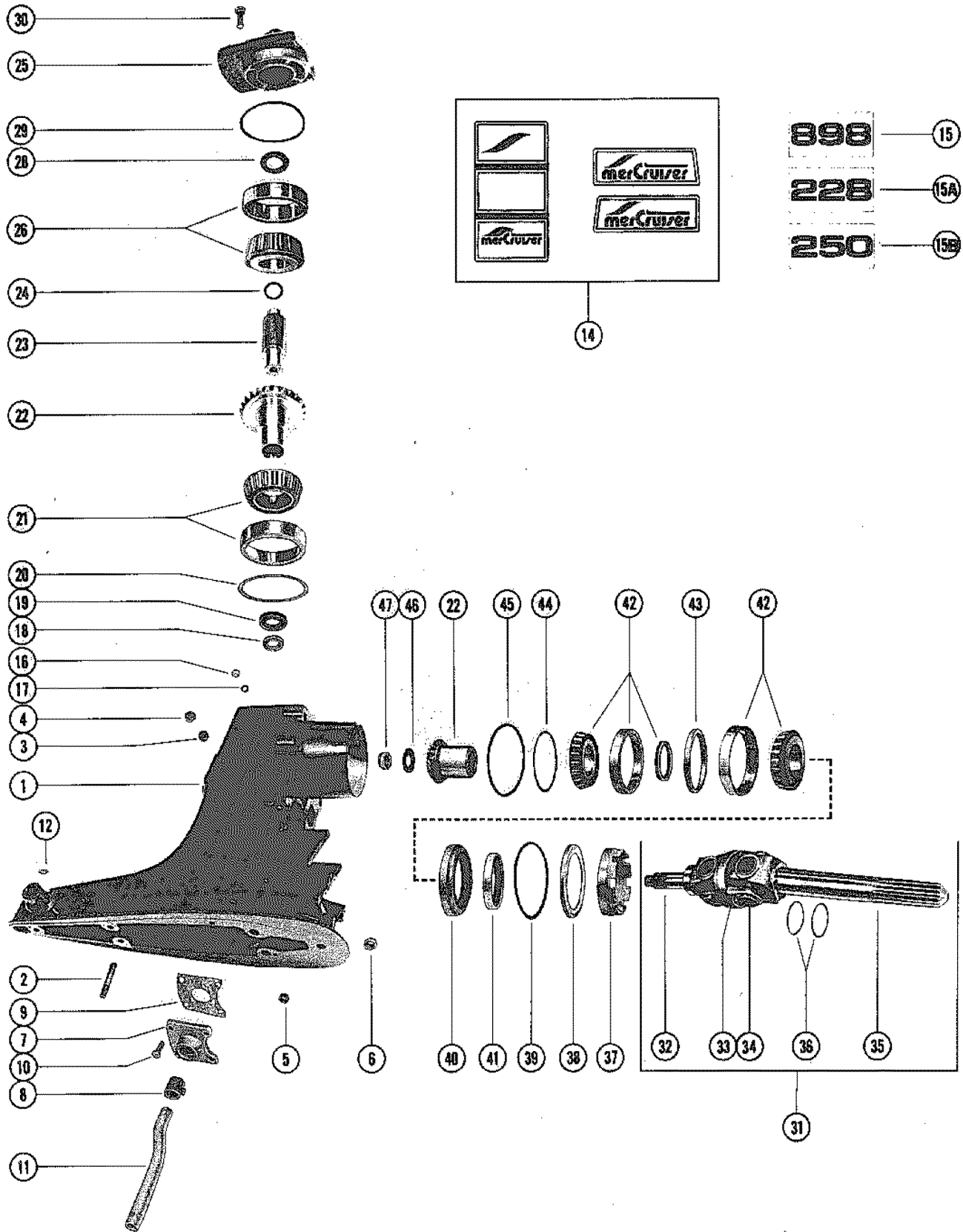
# BELL HOUSING ASSEMBLY



# BELL HOUSING ASSEMBLY

REF. NO.	PART NO.	SYM.	QTY.	DESCRIPTION
1	65535A4		1	BELL HOUSING ASSEMBLY
2	27-64818		1	GASKET, DRIVE SHAFT HSG. TO BELL HSG. (PART OF DRIVE SHAFT)
3	22-33066		1	CONNECTOR, WATER HOSE TO BELL HOUSING
4	10-25612		4	SCREW, DRIVE - BELL HOUSING FLANGE
5	63679		1	BUMPER, BELL HOUSING
6	23-35088		1	BUSHING, BELL HOUSING (5/8")
7	26-45587		1	OIL SEAL, BELL HOUSING
8	23-45588		1	BUSHING, BELL HOUSING (5/16")
9	27-35982		1	GASKET, RUBBER - BELL HOUSING
10	25-33504		1	"O" RING, BELL HOUSING
11	12-72498		2	WASHER, SYNTHANE - BELL HOUSING
12	16-59579		6	STUD, BELL HOUSING TO DRIVE SHAFT HOUSING
13	12-35935		6	WASHER, BELL HOUSING STUD
14	11-34933		6	NUT, BELL HOUSING STUD
15	60932A1		1	BELLOWS ASSEMBLY, UNIVERSAL JOINT
16	54-31765		2	CLAMP, UNIVERSAL JOINT BELLOWS TO BELL HSG. AND GIMBAL HSG.
17	32-47642		1	HOSE, WATER - BELL HOUSING TO GIMBAL HOUSING
18	54-32523		2	CLAMP, WATER HOSE ATTACHING
19	32734		1	BELLOWS, EXHAUST (MERCUSIER 898/228)
	78458		1	TUBE, EXHAUST (MERCUSIER 250)
20	54-32533		2	CLAMP, EXHAUST BELLOWS ATTACHING
21	45589A1		1	SHAFT ASSEMBLY, SHIFT - UPPER
22	62104		1	SHAFT, SHIFT - INTERMEDIATE
23	18-32665		1	COTTER PIN, INTERMEDIATE SHIFT SHAFT RETAINING
24	12-32666		1	WASHER, INTERMEDIATE SHIFT SHAFT
25	45518A1		1	LEVER ASSEMBLY, UPPER SHIFT SHAFT
26	12-39116		1	WASHER, UPPER SHIFT LEVER
27	10-45590		1	SCREW, UPPER SHIFT LEVER TO SHIFT SHAFT (1 1/16")

# DRIVE SHAFT HOUSING ASSEMBLY AND GEAR ASSEMBLY

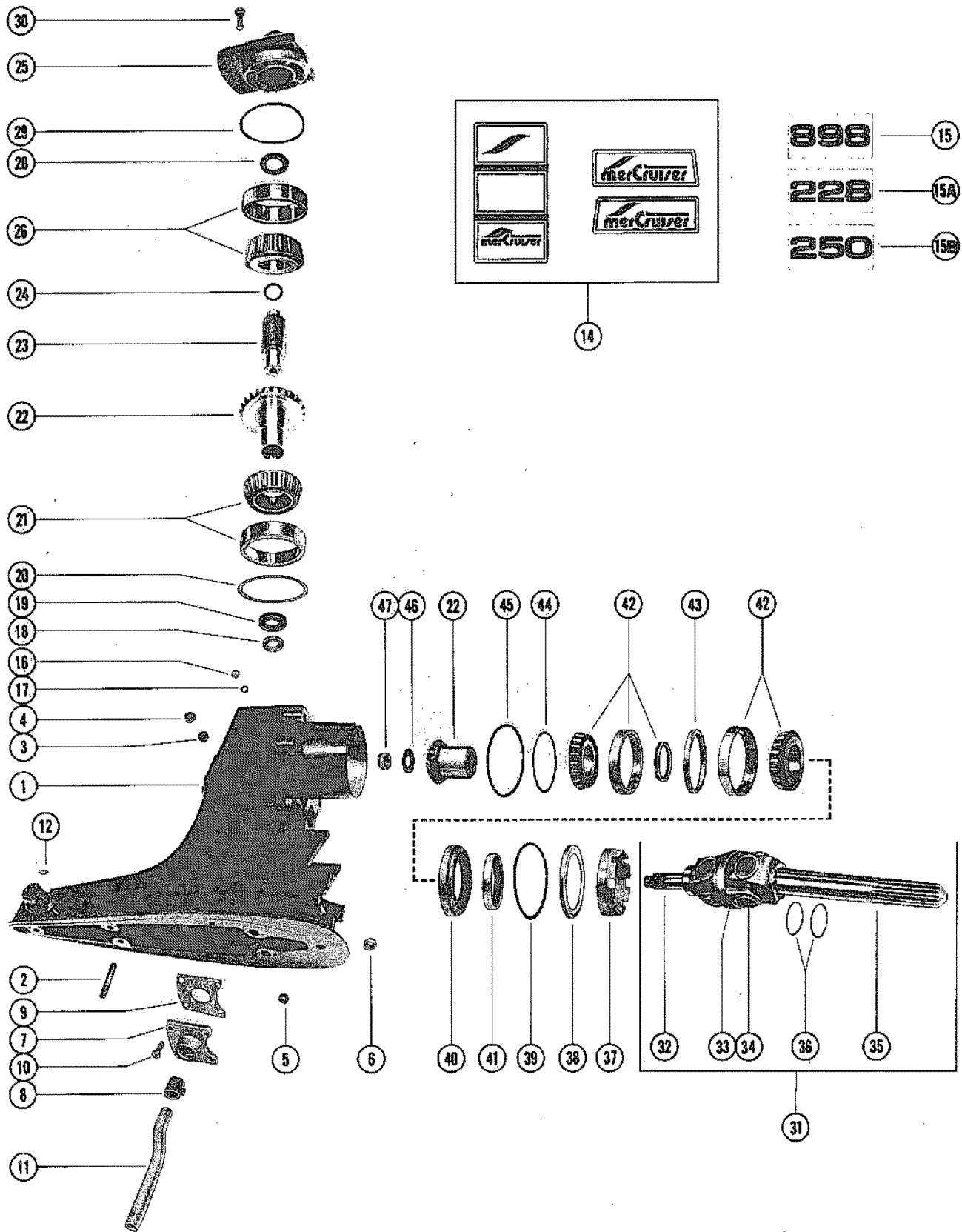


# DRIVE SHAFT HOUSING ASSEMBLY AND GEAR ASSEMBLY

REF. NO.	PART NO.	SYM.	QTY.	DESCRIPTION
1	1547-5523A18		1	DRIVE SHAFT HOUSING ASSEMBLY
2	16-56295		2	STUD, DRIVE SHAFT HOUSING TO GEAR HOUSING (2 11/16")
3	22-31704		1	PLUG, PIPE - DRIVE SHAFT HOUSING (WATER POCKET)
4	19-32652		1	WELCH PLUG, DRIVE SHAFT HOUSING
5	23-32632		1	BUSHING, DRIVE SHAFT HOUSING
6	11-34933		3	NUT, GEAR HOUSING TO DRIVE SHAFT HOUSING STUD
7	54235A2		1	COVER ASSEMBLY, WATER POCKET COVER
8	26-36557		1	SEAL, RUBBER - WATER POCKET COVER
9	27-55810		1	GASKET, WATER POCKET COVER
10	10-28668		4	SCREW, WATER POCKET COVER TO DRIVE SHAFT HOUSING (7/8")
11	32-54236		1	TUBE, WATER - WATER POCKET COVER
12	19-32298		1	PLUG, TRIM TAB HOLE - DRIVE SHAFT HOUSING
14	37-76731A1		1	DECAL SET, DRIVE SHAFT HOUSING
15	37-77649		1	DECAL, DRIVE SHAFT HOUSING "898"
15A	37-76998		1	DECAL, DRIVE SHAFT HOUSING "228"
15B	37-77275		1	DECAL, DRIVE SHAFT HOUSING "250"
16	10-28634		1	SCREW, DRIVE SHAFT HOUSING GREASE FILLER AND VENT HOLE
17	12-20260		1	WASHER, DRIVE SHAFT HOUSING GREASE FILLER AND VENT HOLE SCRE
18	26-37259		1	OIL SEAL, DRIVE SHAFT HOUSING - LOWER
19	26-32511		1	OIL SEAL, GEAR CHAMBER - DRIVE SHAFT HOUSING
20	15-36178A1		AR	SHIM, BEARING CUP TO DRIVE SHAFT HOUSING (.002-3-5-10-15)
21	31-35990A1		1	ROLLER BEARING ASSEMBLY, PINION GEAR <b>MERCUSIER 898/228</b>
22	43-59832A2		1	GEAR ASSEMBLY, COMPLETE (1.50 RATIO) <b>MERCUSIER 898/228</b>
21	31-66818A1		1	ROLLER BEARING ASSEMBLY, PINION GEAR <b>MERCUSIER 250</b>
22	43-66773A2		1	GEAR ASSEMBLY, COMPLETE (1.32 RATIO) <b>MERCUSIER 250</b>
23	45-55796		1	DRIVE SHAFT, UPPER
24	25-55801		1	"O" RING, UPPER DRIVE SHAFT
25	76098A1		1	COVER ASSEMBLY, TOP - DRIVE SHAFT HOUSING
26	31-61100A1		1	BEARING ASSEMBLY, DRIVE SHAFT
28	15-45691A1		AR	SHIM, BEARING CUP TO TOP COVER
29	25-32546		1	"O" RING, TOP COVER SEALING
30	10-58640		4	SCREW, TOP COVER TO DRIVE SHAFT HOUSING (1 1/4")
31	59829A1		1	UNIVERSAL JOINT ASSEMBLY, DRIVE GEAR
32	46020		1	YOKE, UNIVERSAL JOINT - GEAR END
33	39383		1	SOCKET, CENTER - UNIVERSAL JOINT
34	75832		2	CROSS AND BEARING ASSEMBLY, UNIVERSAL JOINT
35	59830A1		1	YOKE ASSEMBLY, UNIVERSAL JOINT - COUPLING END

CONTINUED ON NEXT PAGE ➡

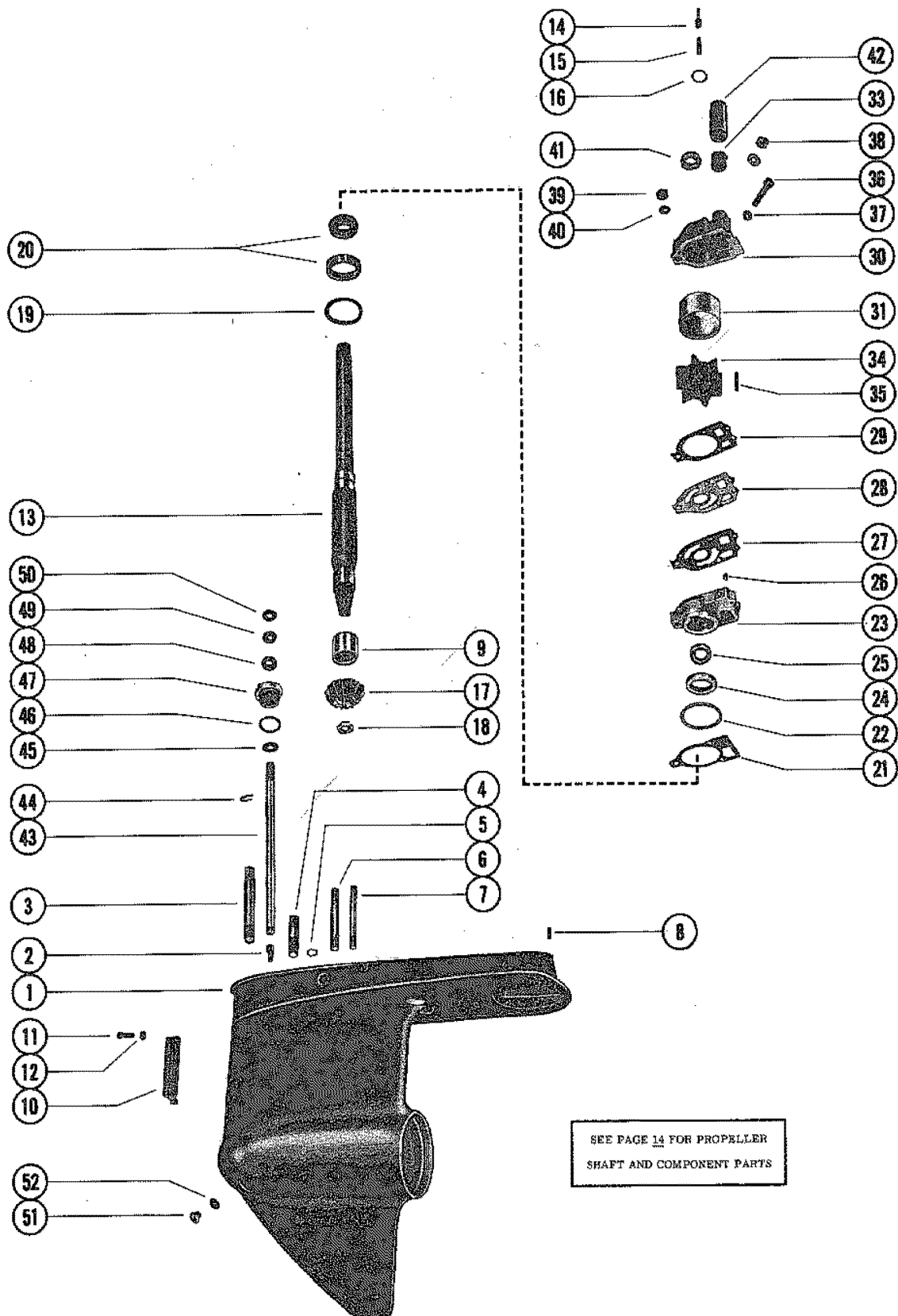
# DRIVE SHAFT HOUSING ASSEMBLY AND GEAR ASSEMBLY



# DRIVE SHAFT HOUSING ASSEMBLY AND GEAR ASSEMBLY

REF. NO.	PART NO.	SYM.	QTY.	DESCRIPTION
36	25-25439		2	"O" RING, UNIVERSAL JOINT
37	66071		1	RETAINER, TAPERED ROLLER BEARING - UNIVERSAL JOINT
38	35983		1	RING, ROLLER BEARING RETAINER TO OIL SEAL CARRIER
39	25-70937		1	"O" RING, OIL SEAL CARRIER
40	66081A2		1	CARRIER ASSEMBLY, OIL SEAL
41	26-68493		1	OIL SEAL, CARRIER
42	31-35988A2		1	ROLLER BEARING ASSEMBLY, DRIVE GEAR <b>MERCUISER 898/228</b>
43	23-35985		1	SPACER, ROLLER BEARING CUPS <b>MERCUISER 898/228</b>
42	31-35988A3		1	ROLLER BEARING ASSEMBLY, DRIVE GEAR <b>MERCUSIER 250</b>
43	23-66824		1	SPACER, ROLLER BEARING CUPS <b>MERCUSIER 250</b>
44	15-35980A1		AR	SHIM, BEARING CUP TO DRIVE SHAFT HOUSING (.002-3-5-10-15)
45	15-71013		1	SHIM, BEARING CUP TO DRIVE SHAFT HOUSING
46	12-45810		1	WASHER, DRIVE GEAR TO UNIVERSAL JOINT NUT
47	11-22339		1	NUT, DRIVE GEAR TO UNIVERSAL JOINT

# GEAR HOUSING ASSEMBLY, COMPLETE



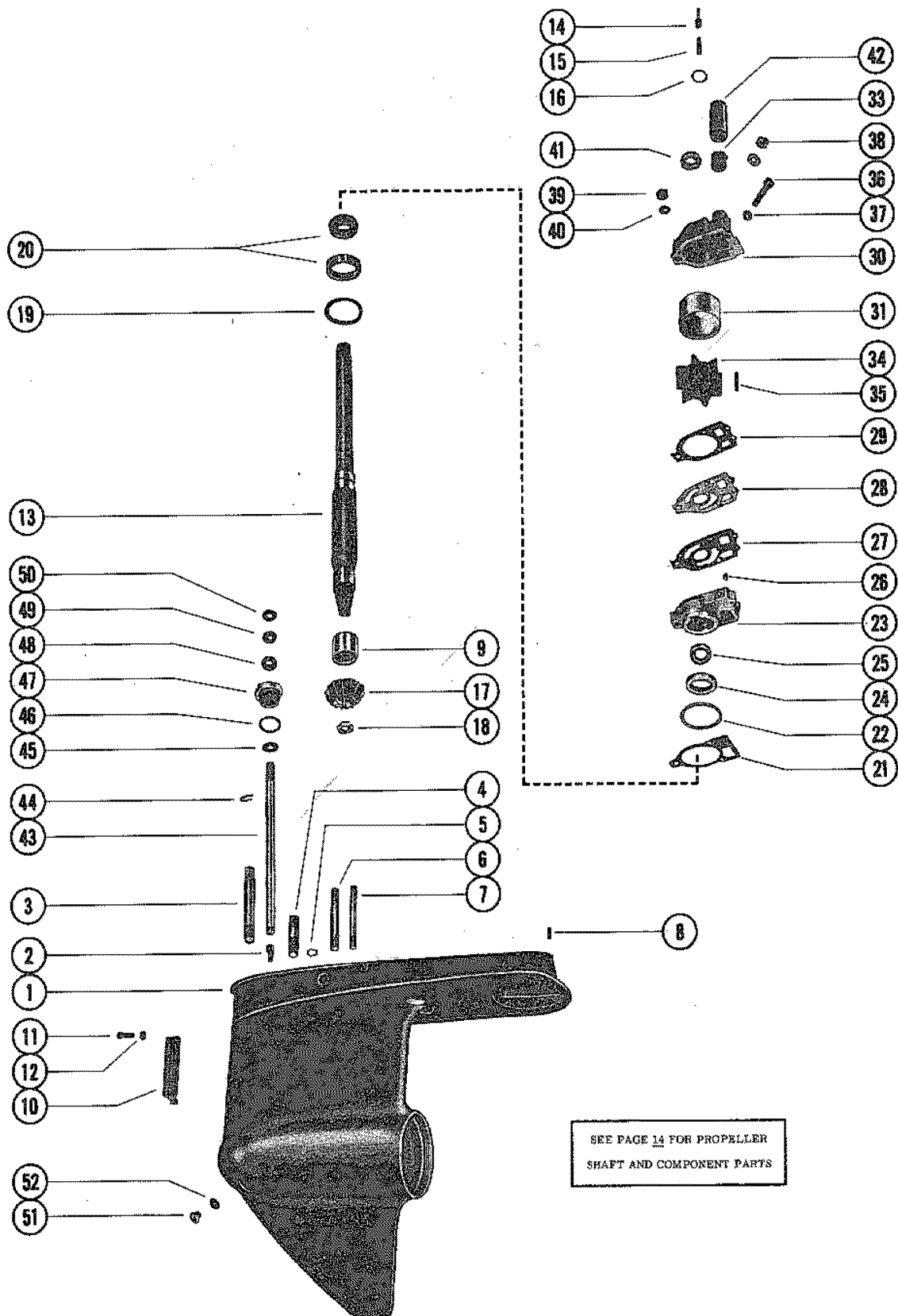


# GEAR HOUSING ASSEMBLY, COMPLETE

REF. NO.	PART NO.	SYM.	QTY.	DESCRIPTION
-	1623-5356A3		1	GEAR HOUSING ASSEMBLY, COMPLETE (SEE NOTE BELOW)
1	1623-5356A4		1	GEAR HOUSING ASSEMBLY
2	17-37972		1	PIN, SHIFT CRANK - GEAR HOUSING
3	16-46911		1	STUD, GEAR HOUSING TO DRIVE SHAFT HOUSING (3 3/16")
4	16-56298		2	STUD, GEAR HOUSING TO DRIVE SHAFT HOUSING (1 31/32"0)
5	26-45577		1	SEAL, GEAR HOUSING
6	16-56297		1	STUD, WATER PUMP BASE AND BODY TO GEAR HOUSING (3 3/8")
7	16-69501		2	STUD, WATER PUMP BASE AND BODY TO GEAR HOUSING (3 1/4")
8	17-46912		2	PIN, DOWEL - GEAR HOUSING TO DRIVE SHAFT HOUSING
9	31-35934		1	BEARING, ROLLER - DRIVE SHAFT
10	66884		1	INSERT, WATER PICKUP (PORT SIDE)
	66885		1	INSERT, WATER PICKUP (STARBOARD SIDE)
11	10-76156		1	SCREW, INSERT TO GEAR HOUSING (1 7/8")
12	11-45812		1	NUT, INSERT SCREW
13	45-55757A1		1	DRIVE SHAFT ASSEMBLY
14	17-30545		1	PIN, DRIVE SHAFT
15	24-34576		1	SPRING, COMPRESSION - DRIVE SHAFT
16	25-30613		1	"O" RING, UPPER - DRIVE SHAFT
17	43-61027		1	GEAR, PINION - DRIVE SHAFT
18	11-35921		1	NUT, PINION GEAR TO DRIVE SHAFT
19	15-57007A1		AR	SHIM, DRIVE SHAFT BEARING TO GEAR HOUSING (.002-3-5-10-20)
20	31-53079A1		1	TAPERED ROLLER BEARING ASSEMBLY, DRIVE SHAFT
21	27-33146		1	GASKET, WATER PUMP BASE TO GEAR HOUSING
22	25-33145		1	"O" RING, WATER PUMP BASE
23	46-57234A1		1	WATER PUMP BASE ASSEMBLY
24	26-33144		1	OIL SEAL, WATER PUMP BASE
25	26-31507		1	OIL SEAL, WATER PUMP BASE
26	17-35973		2	DOWEL PIN, WATER PUMP BASE TO WATER PUMP BODY
27	27-32433		1	GASKET, LOWER - WATER PUMP BASE TO FACE PLATE
28	32435		1	PLATE, FACE - WATER PUMP BASE TO WATER PUMP BODY
29	27-32434		1	GASKET, UPPER - FACE PLATE TO WATER PUMP BODY
30	46-64141A1		1	WATER PUMP BODY ASSEMBLY
31	48752		1	INSERT, WATER PUMP BODY
33	26-38970		1	SEAL, RUBBER - WATER INLET TUBE
34	47-65960		1	IMPELLER, WATER PUMP
35	28-56654		1	PIN, IMPELLER DRIVE

CONTINUED ON NEXT PAGE ➡

# GEAR HOUSING ASSEMBLY, COMPLETE

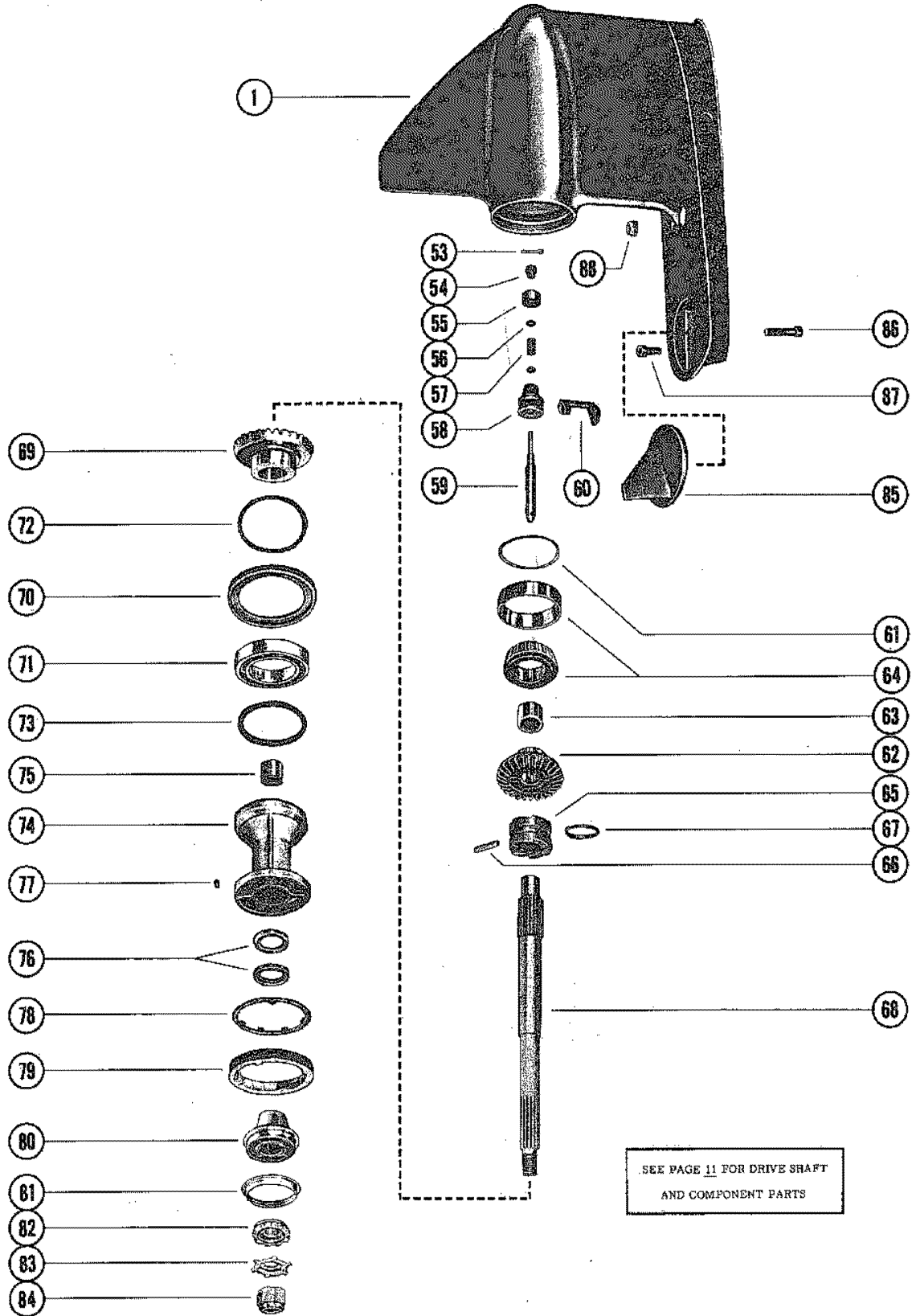


SEE PAGE 14 FOR PROPELLER  
SHAFT AND COMPONENT PARTS

## GEAR HOUSING ASSEMBLY, COMPLETE

REF. NO.	PART NO.	SYM.	QTY.	DESCRIPTION
36	10-30720		1	SCREW, WATER PUMP BODY TO GEAR HOUSING(2 1/4)
37	12-36001		1	WASHER, WATER PUMP BODY SCREW
38	11-35888		2	NUT, WATER PUMP BODY STUDS (1/4-28)
39	11-45592		1	NUT, WATER PUMP BODY STUDS (5/16-24)
40	12-29245		3	WASHER, WATER PUMP BODY STUD
41	25-30271		1	RING, RUBBER - CENTRIFUGAL SLINGER (DRIVE SHAFT)
42	23-29804		1	SLEEVE, GUIDE - WATER INLET TUBE
43	77481		1	SHAFT, SHIFT - LOWER
44	18-20233		1	CLIP, RETAINING - SHIFT SHAFT
45	12-27880		1	WASHER, LOWER SHIFT SHAFT AND CRANK
46	25-25439		1	"O" RING, SHIFT SHAFT BUSHING
47	23-30617A2		1	BUSHING ASSEMBLY, SHIFT SHAFT
48	26-46021		1	OIL SEAL, SHIFT SHAFT BUSHING
49	12-31266		1	WASHER, RUBBER - SHIFT SHAFT BUSHING
50	12-29395		1	WASHER, SHIFT SHAFT
51	10-28634		1	SCREW, GEAR HOUSING GREASE FILLER AND VENT HOLE
52	12-20260		1	WASHER, GEAR HOUSING GREASE FILLER AND VENT HOLE SCREW

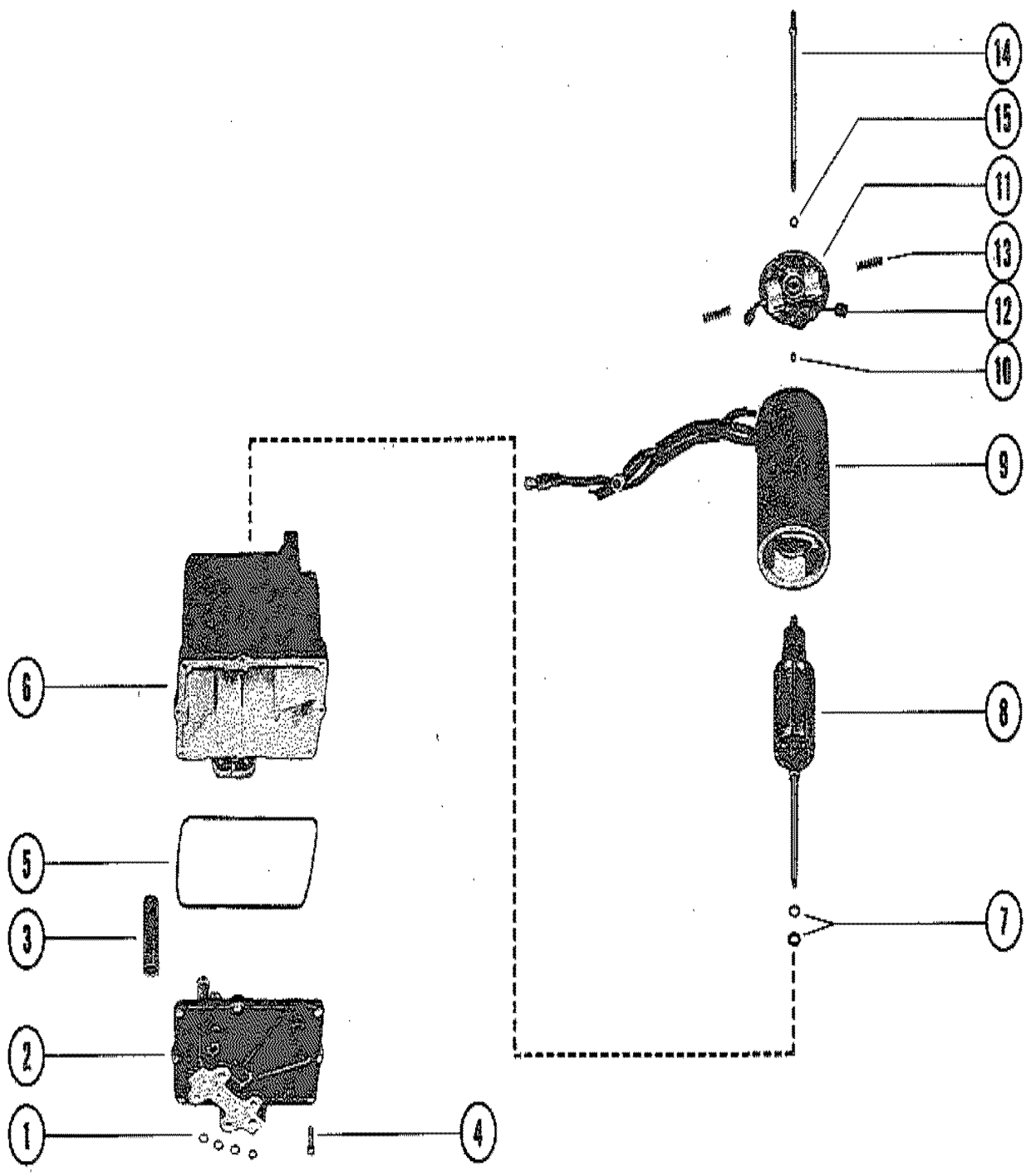
# GEAR HOUSING ASSEMBLY



# GEAR HOUSING ASSEMBLY

REF. NO.	PART NO.	SYM.	QTY.	DESCRIPTION
-	1623-8951A2		1	<b>GEAR HOUSING</b>
1	1623-5356A4		1	GEAR HOUSING
53	18-89212		1	COTTER PIN, CLUTCH ACTUATING SHAFT
54	N.S.S.		1	SLEEVE, ADJUSTING <b>REPLACED BY 19755A2</b>
55	N.S.S.		2	RETAINER, SPRING <b>REPLACED BY 19755A2</b>
56	N.S.S.		1	WASHER <b>REPLACED BY 19755A2</b>
57	N.S.S.		1	SPRING <b>REPLACED BY 19755A2</b>
58	N.S.S.		1	SPOOL <b>REPLACED BY 19755A2</b>
59	N.S.S.		1	SHAFT <b>REPLACED BY 19755A2</b>
60	76865		1	SHIFT CRANK
61	15-47397A1		AR	SHIM
62	43-92158A1		1	FORWARD GEAR
63	31-30895		1	ROLLER BEARING, FORWARD GEAR
64	31-35928A1		1	TAPERED ROLLER BEARING ASSEMBLY
65	52-66063		1	CLUTCH
66	17-30632		1	CROSS PIN
67	24-30893		1	SPRING, RETAINER - CROSS PIN
68	44-66060		1	PROPELLER SHAFT
69	43-61026		1	REVERSE GEAR
70	35915		1	THRUST RING, BEARING CARRIER
71	30-17927		1	BALL BEARING, REVERSE GEAR
72	15-31535A1		AR	SHIM
73	25-31534		1	O-RING, BEARING CARRIER
74	73020A14		1	BEARING CARRIER ASSEMBLY
75	31-30956		1	ROLLER BEARING
76	26-76868		2	OIL SEAL
77	28-30281		1	KEY
78	14-79447		1	TAB WASHER, GEAR HOUSING COVER
79	79448		1	COVER, GEAR HOUSING
80	56292A2		1	THRUST HUB AND WASHER ASSEMBLY
81	12-35965		1	WASHER, CUPPED
82	12-31211A2		1	WASHER, SPLINED - PROPELLER SHAFT
83	14-31210		1	TAB WASHER, PROPELLER NUT
84	11-52707A1		1	PROPELLER NUT
85	31640A1		1	TRIM TAB ASSEMBLY
86	10-32470		1	SCREW, TRIM TAB TO GEAR HOUSING (1-3/4")
87	10-30206		1	SCREW, GEAR HOUSING TO DRIVE SHAFT HOUSING (1")
88	11-34933		2	NUT, DRIVE SHAFT HOUSING TO GEAR HOUSING STUD)

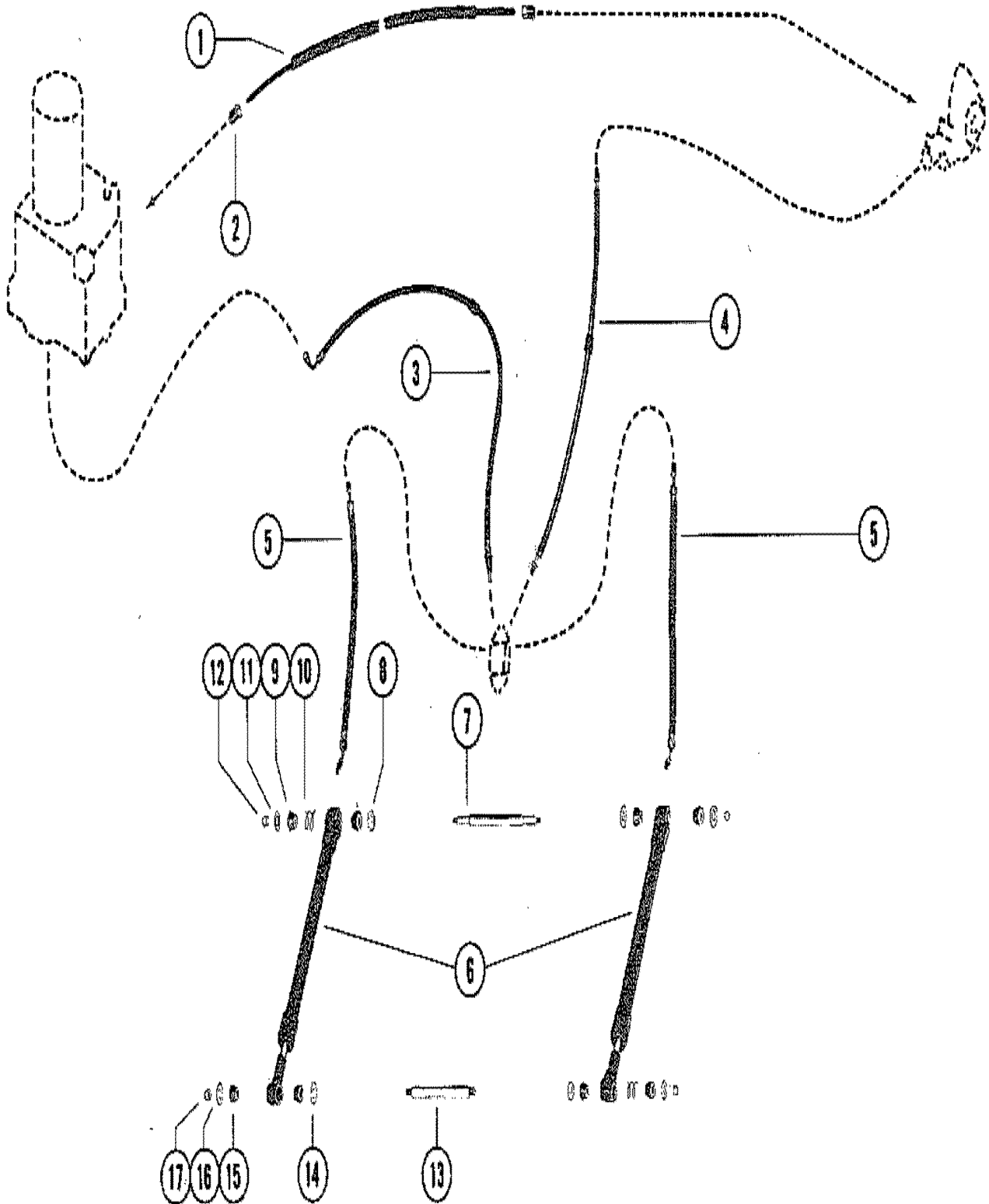
# HYDRAULIC PUMP ASSEMBLY, COMPLETE



## HYDRAULIC PUMP ASSEMBLY, COMPLETE

REF. NO.	PART NO.	SYM.	QTY.	DESCRIPTION
-	74436A9		1	HYDRAULIC PUMP ASSEMBLY, COMPLETE
1	25-21720		4	"O" RING, HYDRAULIC PUMP
2	392-2936		1	VALVE BODY AND GEAR ASSEMBLY
3	392-2618		1	CAM, VALVE BODY
4	10-20411		8	SCREW, VALVE BODY TO RESERVOIR (5/8")
5	392-2937		1	SEAL, RESERVOIR TO VALVE BODY AND GEAR
6	392-2939		1	RESERVOIR ASSEMBLY
7	392-2623		AR	WASHER, THRUST - ARMATURE
8	392-2943		1	ARMATURE. FIELD AND FRAME
9	392-2942		1	FIELD AND FRAMWE ASSEMBLY
10	392-2944		1	BALL, COMMUTATOR END PLATE
11	392-2940		1	PLATE ASSEMBLY, COMMUTATOR END
12	392-2941		1	BRUSH SET, COMMUTATOR END PLATE
13	392-2529		1	SPRING SET, BRUSH TENSION
14	392-2938		1	BOLT SET, THRU - PLATE AND FRAME TO RESERVOIR
15	13-26996		2	LOCKWASHER, THRU BOLT

# TRIM CYLINDERS AND HYDRAULIC HOSES

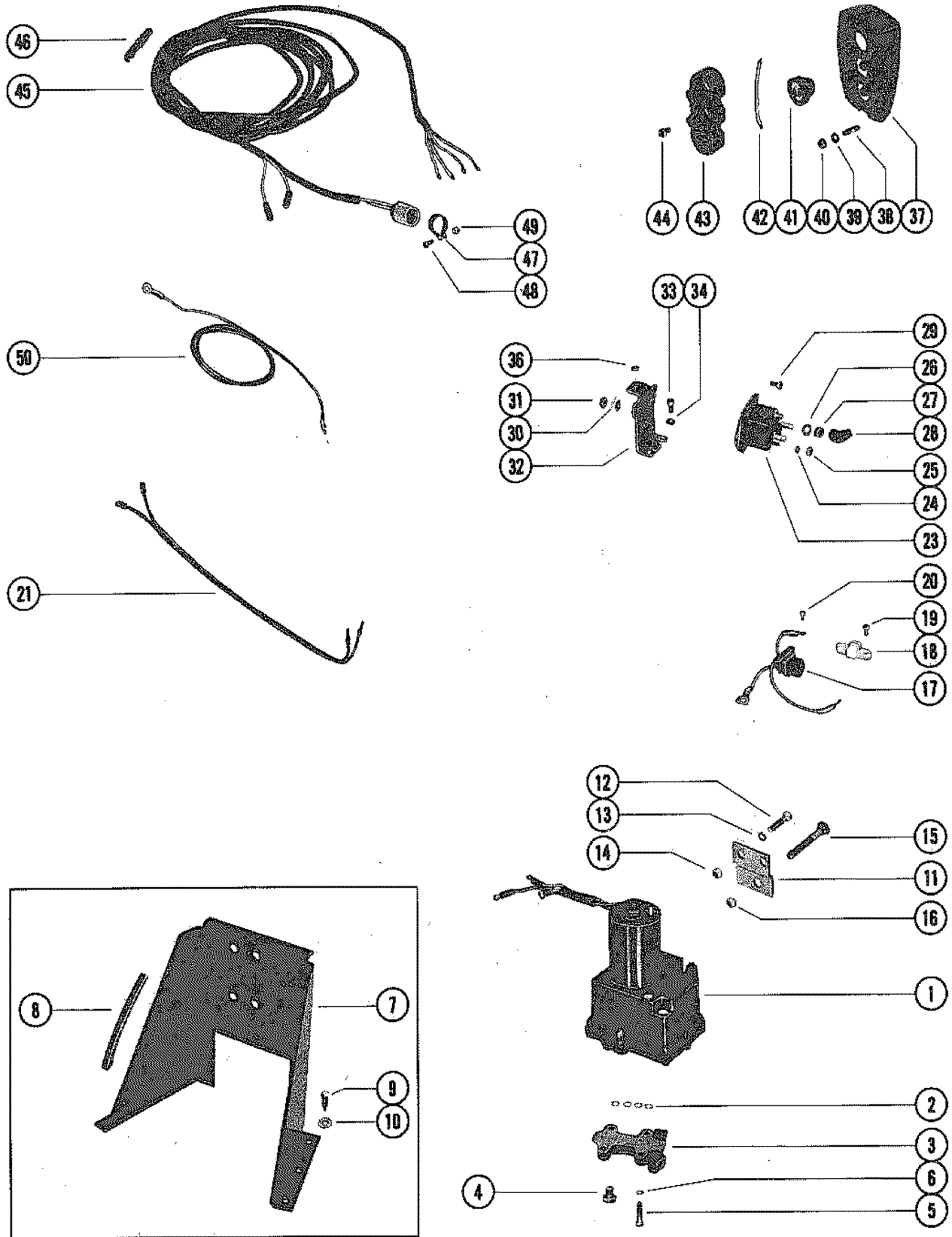




## TRIM CYLINDERS AND HYDRAULIC HOSES

REF. NO.	PART NO.	SYM.	QTY.	DESCRIPTION
1	32-58432A2		1	TUBING, HYDRAULIC PUMP TO VALVE
2	22-49718		2	NUT, COMPRESSION - HYDRAULIC TUBE ATTACHING
3	32-59841		1	HOSE, HYDRAULIC - CONNECTOR TO REVERSE LOCK VALVE (44")
4	32-59842		1	HOSE, HYDRAULIC - CONNECTOR TO TRIM SENDER (29 1/2")
5	32-68676		4	HOSE, HYDRAULIC - CONNECTOR TO TRIM CYLINDER (12 1/2")
6	45706A12		2	TRIM CYLINDER ASSEMBLY, COMPLETE <b>SEE PAGE 19 FOR REPAIR KIT BREAKDOWN</b>
-	<b>45522A3</b>		<b>2</b>	<b>PIVOT END REPAIR KIT, TRIM CYLINDER SEE PAGE 19 FOR REPAIR KIT BREAKDOWN</b>
-	<b>77332A1</b>		<b>2</b>	<b>OUTER TUBE REPAIR KIT, TRIM CYLINDER SEE PAGE 19 FOR REPAIR KIT BREAKDOWN</b>
-	<b>25-60342A2</b>		<b>2</b>	<b>"O" RING REPAIR KIT, TRIM CYLINDER SEE PAGE 19 FOR REPAIR KIT BREAKDOWN</b>
7	17-45735		1	PIN, FRONT ANCHOR - TRIM CYLINDER TO GIMBAL RING (10 11/32")
8	12-45737		2	WASHER, FRONT ANCHOR PIN
9	23-61290		4	BUSHING, RUBBER - FRONT ANCHOR PIN
10	24-46312		2	SPRING, FRONT ANCHOR PIN
11	12-46765		2	WASHER, FRONT ANCHOR PIN
12	11-34932		2	NUT, FRONT ANCHOR PIN
13	17-45738		1	PIN, REAR ANCHOR - TRIM CYLINDER TO DRIVE SHAFT HSG. (7 1/2")
14	12-45737		2	WASHER, REAR ANCHOR PIN
15	23-61290		4	BUSHING, RUBBER - REAR ANCHOR PIN
16	12-46765		2	WASHER, REAR ANCHOR PIN
17	11-34932		2	NUT, REAR ANCHOR PIN

# HYDRAULIC PUMP AND TRIM INDICATOR CONTROL PANEL

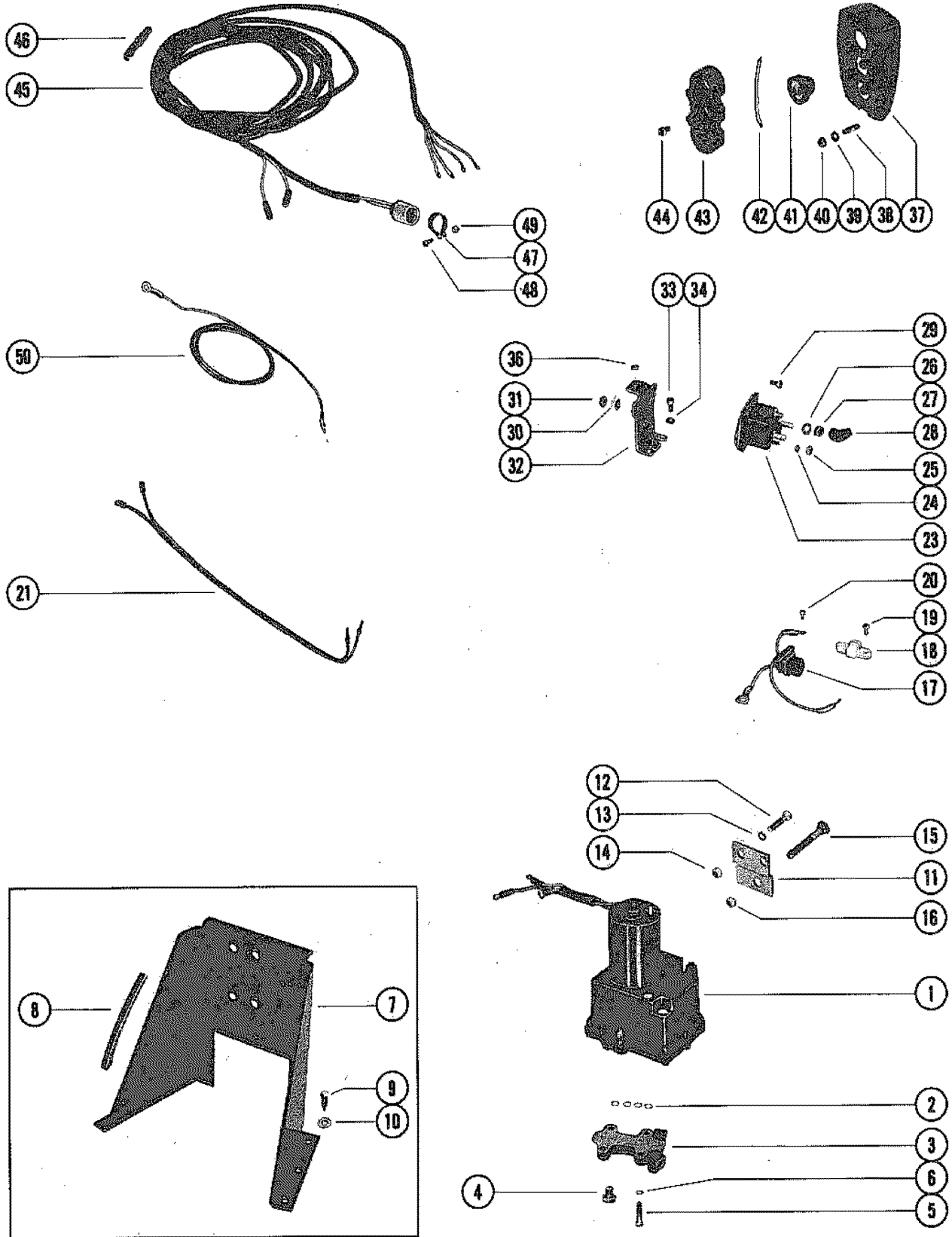


# HYDRAULIC PUMP AND TRIM INDICATOR CONTROL PANEL

REF. NO.	PART NO.	SYM.	QTY.	DESCRIPTION
1	74436A9		1	HYDRAULIC PUMP ASSEMBLY
2	25-21720		4	"O" RING, HYDRAULIC PUMP TO CONTROL VALVE
3	48077A3		1	CONTROL VALVE ASSEMBLY
-	<b>25-21720</b>		<b>4</b>	<b>"O" RING, HYDRAULIC PUMP TO CONTROL VALVE (SEE REFERENCE #2)</b>
4	22-38609		1	PLUG, CONTROL VALVE
5	10-21091		4	SCREW, CONTROL VALVE TO HYDRAULIC PUMP (1 1/8")
6	13-26992		4	LOCKWASHER, CONTROL VALVE SCREW
7	58397A3		1	BRACKET ASSEMBLY, MOUNTING - HYDRAULIC PUMP (FLOOR MOUNTING)
8	58491		2	BUMPER, RUBBER - PUMP MOUNTING BRACKET
9	10-59784		6	SCREW, PUMP MOUNTING BRACKET ATTACHING (1")
10	12-29245		6	WASHER, PUMP MOUNTING BRACKET
11	45377		2	BRACKET, MOUNTING - HYDRAULIC PUMP (TRANSOM MOUNTING)
12	10-24234		4	SCREW, HYDRAULIC PUMP TO MOUNTING BRACKET (1")
13	13-39107		4	LOCKWASHER, HYDRAULIC PUMP SCREW
14	11-21908		4	NUT, HYDRAULIC PUMP SCREW
15	10-68298		2	SCREW, PUMP MOUNTING BRACKET TO TRANSOM (3 1/4")
16	11-35304		2	NUT, PUMP MOUNTING BRACKET SCREW
17	84-74023		1	CONNECTOR AND HARNESS (GREEN LEAD 5 1/2" LONG)
18	45559		1	TERMINAL BLOCK, HYDRAULIC PUMP
19	10-48409		2	SCREW, TERMINAL BLOCK TO HYDRAULIC PUMP (1/2")
20	10-62568		2	SCREW, HARNESS LEADS TO TERMINAL BLOCK (3/8")
21	57756		1	WIRING HARNES, HYDRAULIC PUMP
23	89-68258		1	STARTER SOLENOID
24	13-26996		2	LOCKWASHER, STARTER SOLENOID TERMINAL (#10)
25	11-68219		2	NUT, STARTER SOLENOID TERMINAL (#10)
26	13-26993		2	LOCKWASHER, STARTER SOLENOID TERMINAL (5/16")
27	11-68292		2	NUT, STARTER SOLENOID TERMINAL (5/16"-18)
28	46265		2	BOOT, RUBBER - STARTER SOLENOID TERMINAL
29	10-69052		2	SCREW, STARTER SOLENOID TO MOUNTING BRACKET (1/2")
30	13-26992		2	LOCKWASHER, STARTER SSOLENOID SCREW
31	11-21825		2	NUT, STARTER SOLENOID SCREW
32	74407		1	BRACKET, MOUNTING- STARTER SOLENOID
33	10-21140		2	SCREW, MOUNTING BRACKET TO HYDRAULIC PUMP (1/2")
34	13-26992		2	LOCKWASHER, MOUNTING BRACKET SCREW
36	11-24656		1	NUT, MOUNTING BRACKET TO HYDRAULIC PUMP THRU BOLT
-	<b>55642A7</b>		<b>1</b>	<b>CONTROL PANEL ASSEMBLY, COMPLETE</b>
37	55642A1		1	PANEL ASSEMBLY, CONTROL
38	16-55422		4	STUD, CONTROL PANEL TO BOAT (2")
39	12-24676		4	WASHER, CONTROL PANEL STUD
40	11-27164		4	NUT, CONTROL PANEL STUD

CONTINUED ON NEXT PAGE ➡

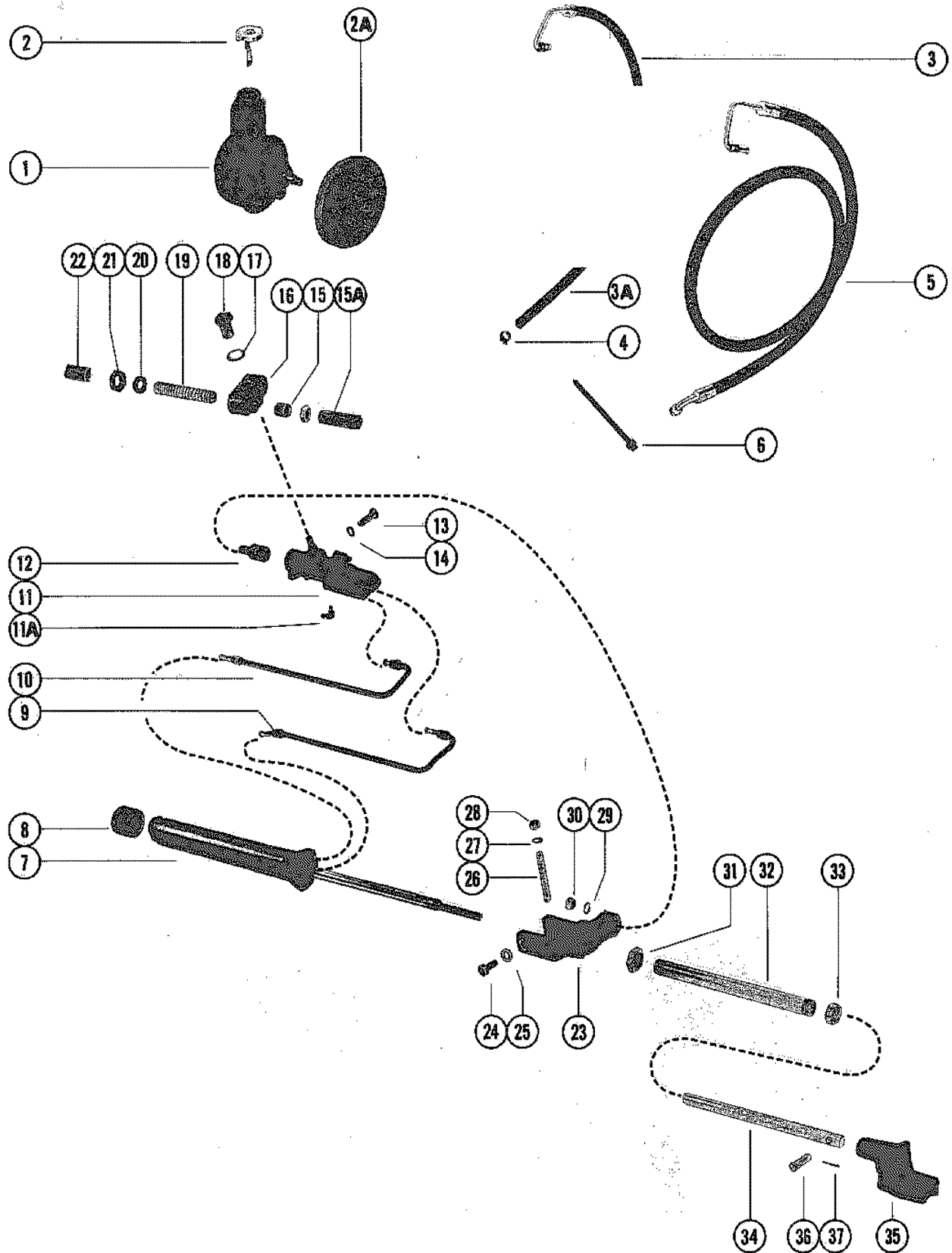
# HYDRAULIC PUMP AND TRIM INDICATOR CONTROL PANEL



# HYDRAULIC PUMP AND TRIM INDICATOR CONTROL PANEL

REF. NO.	PART NO.	SYM.	QTY.	DESCRIPTION
41	55738A1		3	SWITCH, PUSH BUTTON - CONTROL PANEL
42	48078		1	JUMPER WIRE, PUSH BUTTON SWITCH (RED - 3 1/4")
	53107		1	JUMPER WIRE, PUSH BUTTON SWITCH (PURPLE - 3")
43	55641		1	RETAINER, PUSH BUTTON SWITCH
44	10-62568		4	SCREW, SWITCH RETAINER TO CONTROL PANEL (1/2")
45	45341-20		1	HARNESS, CONTROL PANEL
46	33865		1	BINDER, NYLON - CONTROL PANEL HARNESS
47	54-46770		1	CLAMP, HARNESS ATTACHING
48	10-29227		1	SCREW, HARNESS ATTACHING CLAMP (1/2")
49	11-34388		1	NUT, HARNESS ATTACHING CLAMP SCREW
50	84-61109		1	BATTERY LEAD (POSITIVE)
	84-61110		1	BATTERY LEAD (NEGATIVE)

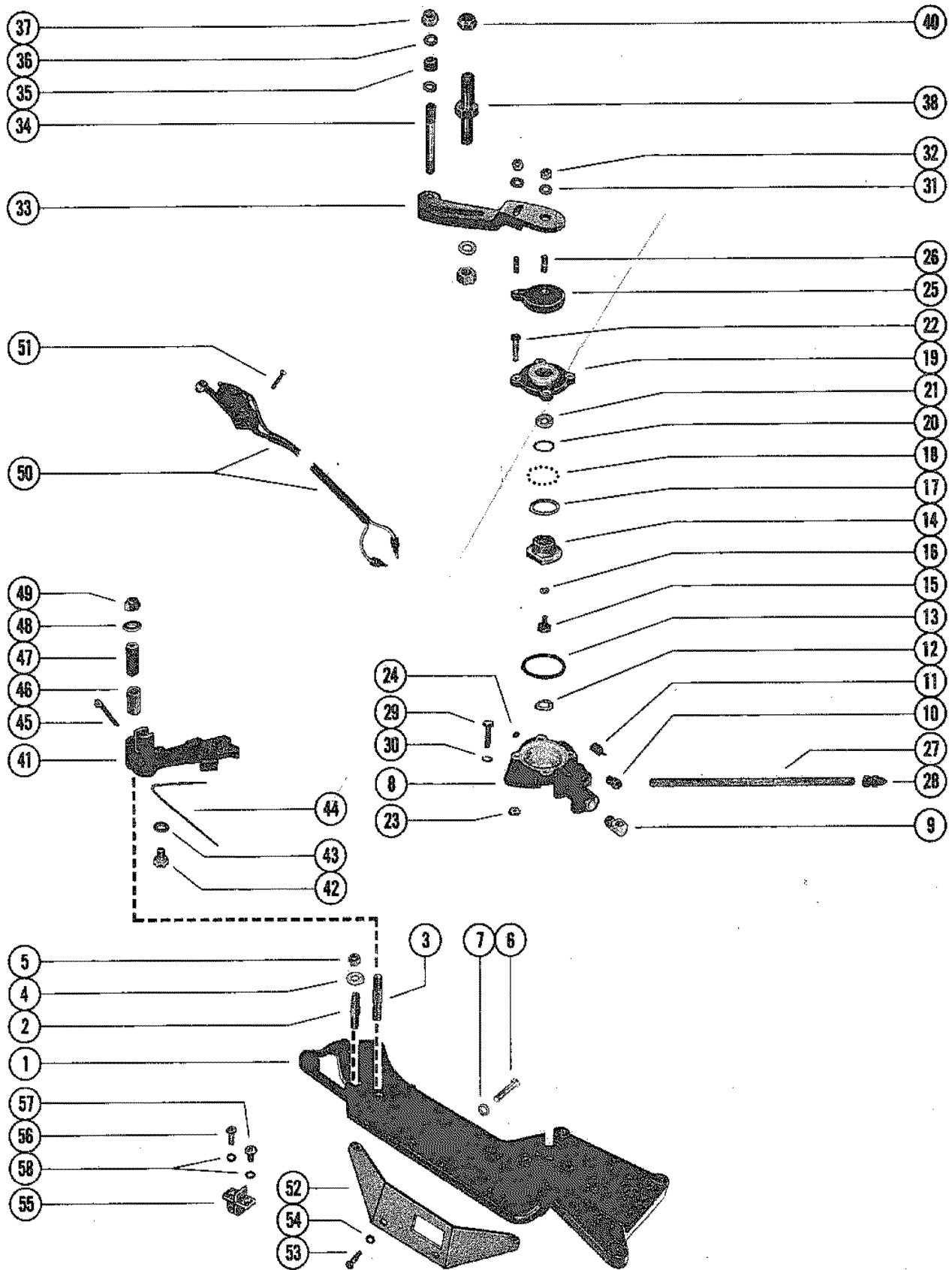
# POWER STEERING KIT



# POWER STEERING KIT

REF. NO.	PART NO.	SYM.	QTY.	DESCRIPTION
1	71317A7		1	HYDRAULIC PUMP ASSEMBLY, POWER STEERING
2	38333		1	CAP, FILLER - HYDRAULIC PUMP
2A	73873		1	PULLEY, HYDRAULIC PUMP
3	32-65929		1	HOSE, RETURN - VALVE TO OIL COOLER (32")
3A	32-65231		1	HOSE, RETURN - OIL COOLER TO HYDRAULIC PUMP (40")
4	54-35830		1	CLAMP, RETURN HOSE TO HYDRAULIC PUMP
5	32-55116		1	HOSE, PRESSURE - POWER STEERING (72")
6	61990		1	STA-STRAP, HYDRAULIC HOSES
7	57969		1	CYLINDER, BOOSTER (B-25-58224A1 SEAL REPAIR KIT)
8	26059		1	CAP, RUBBER - BOOSTER CYLINDER
9	32-57633		1	TUBE, EXTENDING - POWER STEERING
10	32-57634		1	TUBE, RETRACTING - POWER STEERING
11	52779A2		1	VALVE, POWER STEERING (B-25-58226A1 SEAL REPAIR KIT)
11A	22-67305		1	FITTING, GREASE - POWER STEERING VALVE
12	16-55109		1	STUD, ADAPTOR - POWER STEERING VALVE
13	10-37612		1	SCREW, CLAMPING (1 1/4")
14	13-37459		1	LOCKWASHER, CLAMPING SCREW
15	23-60773		1	SLEEVE, ADJUSTING - CABLE GUIDE TUBE
15A	23-60652		1	SLEEVE, ADJUSTING - CABLE GUIDE TUBE
16	55110		1	ADAPTOR, CABLE GUIDE TUBE (DUAL)
17	13-20897		1	LOCKWASHER, DUAL ADAPTER NUT
18	11-55111		1	NUT, DUAL ADAPTOR TO POWER STEERING VALVE
19	32-55112		1	TUBE, CABLE GUIDE
20	12-37985		1	WASHER, CABLE GUIDE TUBE
21	11-37984		1	NUT, CABLE GUIDE TUBE
22	64414		1	GUIDE, CABLE GUIDE TUBE
23	57286		1	BRACKET, MOUNTING - TRANSOM PLATE
24	10-31832		2	SCREW, MOUNTING BRACKET TO TRANSOM PLATE
25	13-31848		2	LOCKWASHER, MOUNTING BRACKET SCREW
26	10-57968		1	SCREW, ADJUSTING - MOUNTING BRACKET
27	13-37459		1	LOCKWASHER, ADJUSTING SCREW
28	11-24883		1	NUT, ADJUSTING SCREW
29	12-20959		1	WASHER, VALVE ADAPTOR STUD
30	11-28040		1	NUT, VALVE ADAPTOR STUD
31	11-32882		1	NUT, MOUNTING TUBE
32	57971		1	TUBE, MOUNTING - BOOSTER ROD EXTENSION
33	11-55983		1	NUT, JAM - MOUNTING TUBE
34	57970		1	EXTENSION - CYLINDER BOOSTER ROD
35	66626		1	ADAPTOR, ROD END
36	17-52798		3	PIN, CLEVIS - STEERING CABLE AND CLEVIS ATTACHING
37	18-46950		3	COTTER PIN, CLEVIS PIN RETAINING

# SHIFT BRACKET AND REVERSE LOCK VALVE



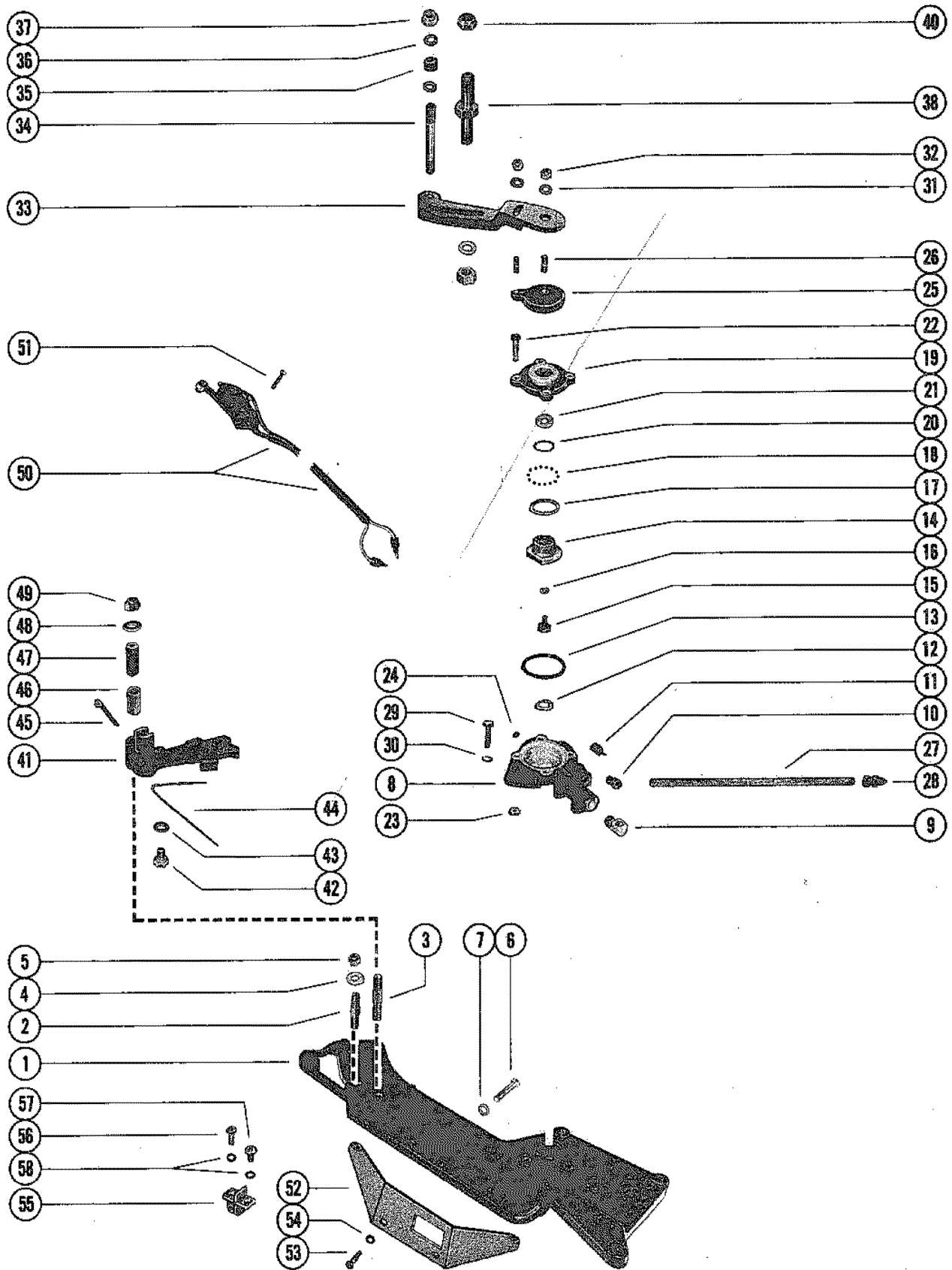


# SHIFT BRACKET AND REVERSE LOCK VALVE

REF. NO.	PART NO.	SYM.	QTY.	DESCRIPTION
1	66057A3		1	SHIFT BRACKET ASSEMBLY
2	16-47360		1	STUD, SHIFT CABLE TO BRACKET (1 3/4")
3	16-73563		1	STUD, SWITCH ACTUATING ARM TO SHIFT BRACKET (2 5/16")
4	12-39143		2	WASHER, SHIFT CABLE TO LEVER STUD
5	11-20361		2	NUT, SHIFT BRACKET STUD
6	10-52498		2	SCREW, SHIFT BRACKET TO FLYWHEEL HOUSING (1 1/2")
7	12-22248		2	WASHER, SHIFT BRACKET ATTACHING SCREW
8	76812A4		1	REVERSE LOCK VALVE ASSEMBLY
9	22-45794		1	ELBOW, HYDRAULIC TRIM HOSE TO REVERSE LOCK VALVE
10	22-48167		1	CONNECTOR, ELBOW
11	45709		1	FOLLOWER, CAM
12	13-25906		1	WASHER, WAVE - REVERSE LOCK VALVE
13	25-45710		1	"O" RING, REVERSE LOCK VALVE
14	45526		1	CAM, REVERSE LOCK VALVE
15	10-46736		1	SCREW, CAM TO CAM LEVER (1/2")
16	13-26996		1	LOCKWASHER, CAM SCREW
17	12-45713		1	WASHER, RETAINING - BALL TO VALVE COVER
18	30-45712		30	BALL, VALVE COVER
19	45528A2		1	COVER ASSEMBLY, REVERSE LOCK VALVE
20	25-45711		1	"O" RING, VALVE COVER
21	12-59570		1	WASHER, VALVE COVER
22	10-45716		4	SCREW, COVER TO REVERSE LOCK VALVE (15/16")
23	11-20110		4	NUT, COVER SCREW
24	22-52644		1	PLUG, PIPE - REVERSE LOCK VALVE
25	46732A1		1	LEVER ASSEMBLY, CAM
26	16-45715		2	STUD, SHIFT CONTROL LEVER TO CAM LEVER (23/32")
27	32-52951A1		1	TUBING ASSEMBLY, REVERSE LOCK VALVE TO TRIM SENDER
28	22-49718		2	NUT, TUBING ATTACHING
29	10-25038		2	SCREW, REVERSE LOCK VALVE TO SHIFT SUPPORT BRACKET (7/8")
30	13-39107		2	LOCKWASHER, REVERSE LOCK VALVE SCREW
31	12-21273		2	WASHER, CAM LEVER STUD
32	11-20110		2	NUT, SHIFT CONTROL LEVER TO CAM LEVER STUD
33	66397A1		1	LEVER ASSEMBLY, SHIFT CONTROL - CAM LEVER
34	16-63081		1	STUD, CABLE TO LEVER
35	23-31866		1	SPACER, SHIFT LEVER STUD
36	12-39143		2	WASHER, SHIFT LEVER STUD
37	11-20361		1	NUT, SHIFT CABLE TO LEVER STUD
38	16-63335		1	STUD, SHIFT CABLE TO SHIFT LEVER
40	11-63341		1	TEE NUT, SHIFT CABLE STUD
41	45517A2		1	ARM ASSEMBLY, SWITCH ACTUATING

CONTINUED ON NEXT PAGE ➡

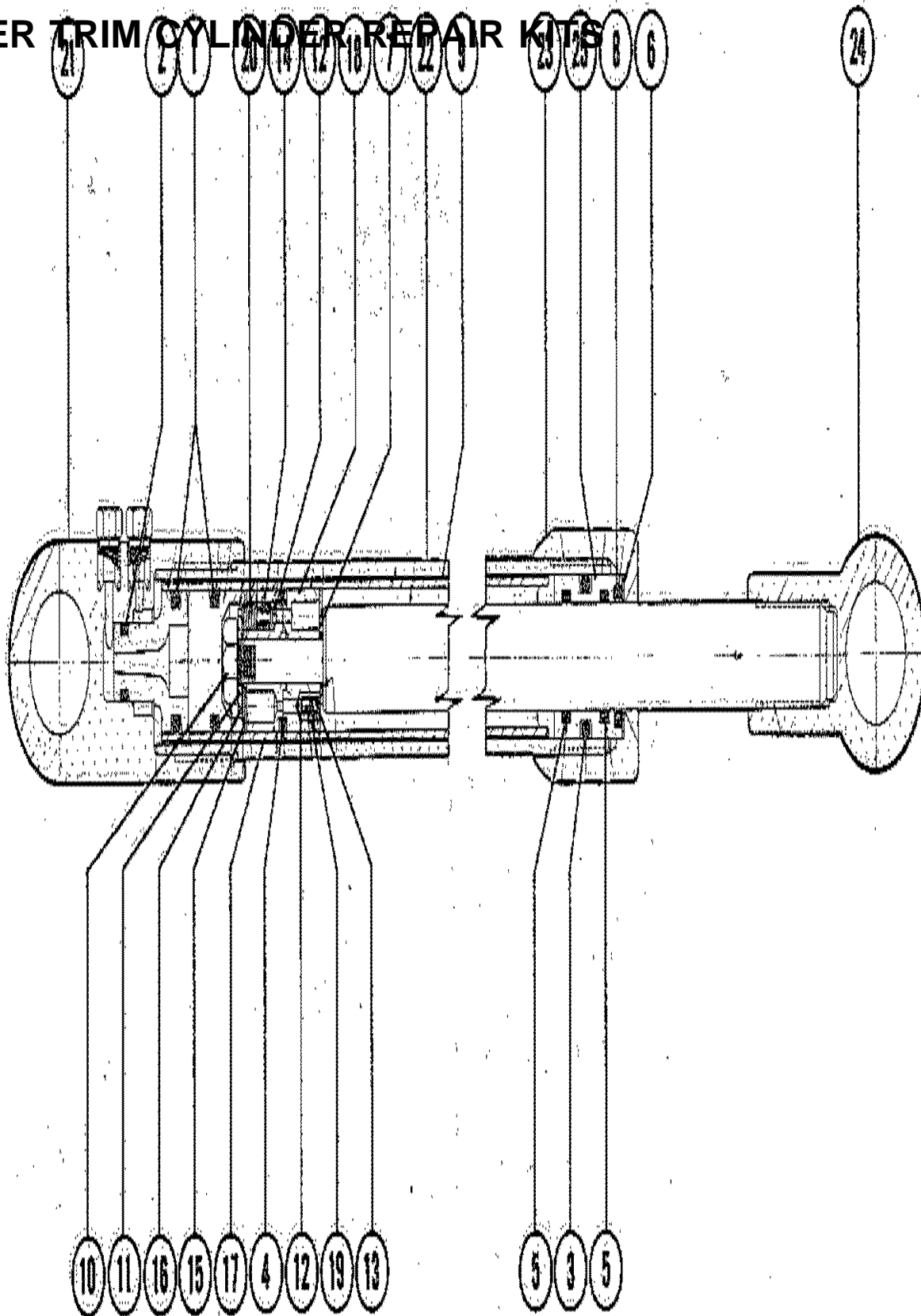
# SHIFT BRACKET AND REVERSE LOCK VALVE



## SHIFT BRACKET AND REVERSE LOCK VALVE

REF. NO.	PART NO.	SYM.	QTY.	DESCRIPTION
42	10-33231		1	SCREW, TENSION SPRING TO ARM
43	12-26825		1	WASHER, TENSION SPRING SCREW
44	24-45599		1	SPRING, TENSION - SWITCH ACTUATING ARM
45	18-32857		1	COTTER PIN, SHIFT ACTUATING CABLE TO ACTUATING ARM
46	23-45600		1	SLEEVE, SWITCH ACTUATING ARM STUD
47	23-37981		1	SPACER, SWITCH ACTUATING ARM TO TRANSOM PLATE
48	12-26825		2	WASHER, SWITCH ACTUATING ARM STUD
49	11-35814		1	NUT, SWITCH ACTUATING ARM STUD
50	39670A5		1	SWITCH ASSEMBLY, CUT-OUT - TRANSOM PLATE
51	10-30902		2	SCREW, SWITCH ASSEMBLY TO TRANSOM PLATE (3/4")
52	66059		1	BRACKET, MOUNTING - SHIFT
53	10-35386		3	SCREW, SHIFT BRACKET ATTACHING
54	13-39107		3	LOCKWASHER, SHIFT BRACKET ATTACHING SCREW
55	86-66986		1	TERMINAL BLOCK, SHIFT BRACKET
56	10-24637		1	SCREW, TERMINAL BLOCK (7/8")
57	10-45218		1	SCREW, TERMINAL BLOCK (3/8")
58	13-26996		2	LOCKWASHER, TERMINAL BLOCK SCREW

# POWER TRIM CYLINDER REPAIR KITS



## POWER TRIM CYLINDER REPAIR KITS

REF. NO.	PART NO.	SYM.	QTY.	DESCRIPTION
-	<b>45522A3</b>		1	<b>OVERHAUL KIT</b>
-	<b>25-60342A2</b>		1	<b>"O" RING KIT</b>
1	N.S.S.		2	"O"RING (3/4" X 1 X 5/32")
2	N.S.S.		1	"O"RING (3/8" X 9/16" X 3/32")
3	N.S.S.		1	"O"RING (7/8" X 11/8" X 1/8")
4	N.S.S.		1	"O"RING (13/16" X 3/32 SQ.)
5	N.S.S.		2	"O" RING (3/4" X 15/16" X 1/8").
6	N.S.S.		1	WASHER, PLAIN-END CAP
7	N.S.S.		1	WASHER, SEALING
8	N.S.S.		1	ROD SCRAPER
9	N.S.S.		1	TUBE, INNER
10	N.S.S.		1	NUT, PISTON ROD
11	N.S.S.		1	WASHER, PISTON ROD NUT
12	N.S.S.		5	BALL, STEEL
13	N.S.S.		1	SPRING, BY-PASS
14	N.S.S.		4	RIVET, TUBULAR
15	N.S.S.		1	WASHER, SHOCK PISTON
16	N.S.S.		AR	WASHER, SHOCK PISTON
17	N.S.S.		1	POSTON, SHOCK-IMPACT
18	N.S.S.		1	PISTON, SHOCK-RETURN
19	N.S.S.		2	EYELET
20	N.S.S.		4	SPRING, COMPRESSION
-	<b>77442A1</b>		1	<b>TUBE KIT</b>
21	N.S.S.		1	END CAP-GIMBAL RING
22	N.S.S.		1	TUBE, OUTER
23	N.S.S.		1	END CAP
24	45522		1	PIVOT END
25	45726		1	BEARING, PISTON ROD

# PARTS INDEX

Part Number	Description	Pg.	Ref. No.	Part Number	Description	Pg.	Ref. No.
20007	ANCHOR, SHIFT ACTUATING CABLE END GUIDE	3	22	45709	FOLLOWER, CAM	31	11
26059	CAP, RUBBER - BOOSTER CYLINDER	29	8	45726	BEARING, PISTON ROD	35	25
29359	LUBRICAP, GIMBAL HOUSING GREASE FITTING	5	8	46020	YOKE, UNIVERSAL JOINT - GEAR END	11	32
29359	LUBRICAP, GIMBAL RING GREASE FITTING	7	6	46265	BOOT, RUBBER - STARTER SOLENOID TERMINAL	25	28
29880	GUIDE, SHIFT ACTUATING CABLE END	3	21	46732A1	LEVER ASSEMBLY, CAM	31	25
31640A1	TRIM TAB ASSEMBLY	19	85	47347	CONNECTOR, HYDRAULIC - GIMBAL HOUSING	5	35
32435	PLATE, FACE - WATER PUMP BASE TO WATER PUMP BODY	15	28	48077A3	CONTROL VALVE ASSEMBLY	25	3
32517	COVER, WATER TUBE SEALING BUSHING - GIMBAL HOUSING	5	31	48078	JUMPER WIRE, PUSH BUTTON SWITCH (RED - 3 1/4")	27	42
32734	BELLOWS, EXHAUST (MERCUSIER 898/228)	9	19	48752	INSERT, WATER PUMP BODY	15	31
33865	BINDER, NYLON - CONTROL PANEL HARNESS	27	46	52779A2	VALVE, POWER STEERING (B-25-58226A1 SEAL REPAIR KIT)	29	11
33981	SLIDE, SHIFT ACTUATING CABLE	3	26	53107	JUMPER WIRE, PUSH BUTTON SWITCH (PURPLE - 3")	27	42
35915	THRUST RING, BEARING CARRIER	19	70	54235A2	COVER ASSEMBLY, WATER POCKET COVER	11	7
35983	RING, ROLLER BEARING RETAINER TO OIL SEAL CARRIER	13	38	55110	ADAPTOR, CABLE GUIDE TUBE (DUAL)	29	16
38333	CAP, FILLER - HYDRAULIC PUMP	29	2	55641	RETAINER, PUSH BUTTON SWITCH	27	43
38473	WRAPPING, SHIFT ACTUATING CABLE	3	24	55642A1	PANEL ASSEMBLY, CONTROL	25	37
39383	SOCKET, CENTER - UNIVERSAL JOINT	11	33	55642A7	CONTROL PANEL ASSEMBLY, COMPLETE	25	--
39670A5	SWITCH ASSEMBLY, CUT-OUT - TRANSOM PLATE	33	50	55738A1	SWITCH, PUSH BUTTON - CONTROL PANEL	27	41
45341-20	HARNESS, CONTROL PANEL	27	45	55989	ANODIC HEAD, BOLT ASSEMBLY	5	21
45377	BRACKET, MOUNTING - HYDRAULIC PUMP (TRANSOM MOUNTING)	25	11	55989A1	BOLT ASSEMBLY, ANODIC - GIMBAL HOUSING TO TRANSOM PLATE	5	20
45517A2	ARM ASSEMBLY, SWITCH ACTUATING	31	41	56292A2	THRUST HUB AND WASHER ASSEMBLY	19	80
45518A1	LEVER ASSEMBLY, UPPER SHIFT SHAFT	9	25	57008	RETAINER, SWITCH AND SENDER SCREW	7	14
45522	PIVOT END	35	24	57286	BRACKET, MOUNTING - TRANSOM PLATE	29	23
45522A3	OVERHAUL KIT	35	-	57322	COVER, RETAINING - GIMBAL HOUSING	5	37
45522A3	PIVOT END REPAIR KIT, TRIM CYLINDER	23	-	57756	WIRING HARNES, HYDRAULIC PUMP	25	21
45526	CAM, REVERSE LOCK VALVE	31	14	57969	CYLINDER, BOOSTER (B-25-58224A1 SEAL REPAIR KIT)	29	7
45528A2	COVER ASSEMBLY, REVERSE LOCK VALVE	31	19	57970	EXTENSION - CYLINDER BOOSTER ROD	29	34
45559	TERMINAL BLOCK, HYDRAULIC PUMP	25	18	57971	TUBE, MOUNTING - BOOSTER ROD EXTENSION	29	32
45589A1	SHAFT ASSEMBLY, SHIFT - UPPER	9	21				

# PARTS INDEX

Part Number	Description	Pg.	Ref. No.	Part Number	Description	Pg.	Ref. No.
58491	BUMPER, RUBBER - PUMP MOUNTING BRACKET . . .	25	8	74436A9	HYDRAULIC PUMP ASSEMBLY, COMPLETE . .	21	-
59829A1	UNIVERSAL JOINT ASSEMBLY, DRIVE GEAR	11	31	74639	BELLOWS, SHIFT ACTUATING CABLE . . . . .	5	24
59830A1	YOKE ASSEMBLY, UNIVERSAL JOINT - COUPLING END . . . . .	11	35	75158	TUBE, STEERING CABLE GUIDE (7/8" O.D.) . . . . .	3	15
60932A1	BELLOWS ASSEMBLY, UNIVERSAL JOINT . . . . .	9	15	75832	CROSS AND BEARING ASSEMBLY, UNIVERSAL JOINT . . . . .	11	34
61075	TOLERANCE RING, GIMBAL HOUSING BEARING . . . . .	5	11	76098A1	COVER ASSEMBLY, TOP - DRIVE SHAFT HOUSING . .	11	25
61990	STA-STRAP, HYDRAULIC HOSES . . . . .	29	6	76812A4	REVERSE LOCK VALVE ASSEMBLY . . . . .	31	8
62104	SHAFT, SHIFT - INTERMEDIATE . . . . .	9	22	76865	SHIFT CRANK . . . . .	19	60
63115A2	SWITCH ASSEMBLY, TRIM LIMIT (PORT SIDE) . . . . .	7	8	77123	PIN, HINGE - THREADED (WITH GREASE GROOVE)	7	7
63679	BUMPER, BELL HOUSING . .	9	5	77124A2	GIMBAL RING ASSEMBLY . .	7	1
64414	GUIDE, CABLE GUIDE TUBE	29	22	77332A1	OUTER TUBE REPAIR KIT, TRIM CYLINDER . . . . .	23	-
64947	SENDER, DUMMY (STARBOARD) . . . . .	7	8	77442A1	TUBE KIT . . . . .	35	--
65533	SEAL, GIMBAL HOUSING TO TRANSOM . . . . .	5	33	77481	SHAFT, SHIFT - LOWER . . .	17	43
65535A4	BELL HOUSING ASSEMBLY	9	1	78458	TUBE, EXHAUST (MERCURIER 250) . . . . .	9	19
65537	SHAFT, UPPER SWIVEL . . .	7	16	79448	COVER, GEAR HOUSING . . .	19	79
65545	PLATE, TRANSOM . . . . .	3	1	N.S.S.	"O" RING (3/4" X 15/16" X 1/8"). . . . .	35	5
66057A3	SHIFT BRACKET ASSEMBLY	31	1	N.S.S.	"O"RING (13/16" X 3/32 SQ.)	35	4
66059	BRACKET, MOUNTING - SHIFT . . . . .	33	52	N.S.S.	"O"RING (3/4" X 1 X 5/32") . .	35	1
66069A2	CORE WIRE ASS'Y, INNER SHIFT CABLE . . . . .	3	19	N.S.S.	"O"RING (3/8" X 9/16" X 3/32") . . . . .	35	2
66071	RETAINER, TAPERED ROLLER BEARING - UNIVERSAL JOINT . . . . .	13	37	N.S.S.	"O"RING (7/8" X 11/8" X 1/8")	35	3
66081A2	CARRIER ASSEMBLY, OIL SEAL . . . . .	13	40	N.S.S.	BALL, STEEL . . . . .	35	12
66388A1	STEERING LINK ROD ASSEMBLY . . . . .	7	23	N.S.S.	END CAP . . . . .	35	23
66397A1	LEVER ASSEMBLY, SHIFT CONTROL - CAM LEVER . .	31	33	N.S.S.	END CAP-GIMBAL RING . . .	35	21
66545	STEERING LEVER . . . . .	7	15	N.S.S.	EYELET . . . . .	35	19
66626	ADAPTOR, ROD END . . . . .	29	35	N.S.S.	NUT, PISTON ROD . . . . .	35	10
66884	INSERT, WATER PICKUP (PORT SIDE) . . . . .	15	10	N.S.S.	PISTON, SHOCK-RETURN . .	35	18
66885	INSERT, WATER PICKUP (STARBOARD SIDE) . . . . .	15	10	N.S.S.	POSTON, SHOCK-IMPACT . .	35	17
70862A1	GIMBAL HOUSING ASSEMBLY . . . . .	5	1	N.S.S.	RETAINER, SPRING . . . . .	19	55
71317A7	HYDRAULIC PUMP ASSEMBLY, POWER STEERING . . . . .	29	1	N.S.S.	RIVET, TUBULAR . . . . .	35	14
73020A14	BEARING CARRIER ASSEMBLY . . . . .	19	74	N.S.S.	ROD SCRAPER . . . . .	35	8
73679A2	CABLE ASSEMBLY, SHIFT ACTUATING . . . . .	3	18	N.S.S.	SHAFT . . . . .	19	59
73873	PULLEY, HYDRAULIC PUMP	29	2A	10-20411	SLEEVE, ADJUSTING . . . . .	19	54
74407	BRACKET, MOUNTING-STARTER SOLENOID . . .	25	32	N.S.S.	SPOOL . . . . .	19	58
74436A9	HYDRAULIC PUMP ASSEMBLY . . . . .	25	1	N.S.S.	SPRING . . . . .	19	57
				N.S.S.	SPRING, BY-PASS . . . . .	35	13
				N.S.S.	SPRING, COMPRESSION . . .	35	20
				N.S.S.	TUBE, INNER . . . . .	35	9
				N.S.S.	TUBE, OUTER . . . . .	35	22
				N.S.S.	WASHER . . . . .	19	56
				N.S.S.	WASHER, PISTON ROD NUT	35	11
				N.S.S.	WASHER, PLAIN-END CAP . .	35	6
				N.S.S.	WASHER, SEALING . . . . .	35	7
				N.S.S.	WASHER, SHOCK PISTON . .	35	15
				N.S.S.	WASHER, SHOCK PISTON . .	35	16
				10-20518	SCREW, VALVE BODY TO RESERVOIR (5/8") . . . . .	21	4
					SCREW, SET - ANCHOR TO SHIFT ACTUATING CABLE END GUIDE . . . . .	3	23

# PARTS INDEX

Part Number	Description	Pg.	Ref. No.	Part Number	Description	Pg.	Ref. No.
10-21091	SCREW, CONTROL VALVE TO HYDRAULIC PUMP (1 1/8")	25	5	10-37268	SCREW, TRANSOM PLATE TO GIMBAL HOUSING (4 1/4")	3	4
10-21140	SCREW, MOUNTING BRACKET TO HYDRAULIC PUMP (1/2")	25	33	10-37269	SCREW, TRANSOM PLATE TO GIMBAL HOUSING (2")	3	3
10-24234	SCREW, HYDRAULIC PUMP TO MOUNTING BRACKET (1")	25	12	10-37612	SCREW, CLAMPING (1 1/4")	29	13
10-24637	SCREW, TERMINAL BLOCK (7/8")	33	56	10-37978	SCREW, SWITCH AND SENDER TO GIMBAL RING (3/4")	7	12
10-25038	SCREW, REVERSE LOCK VALVE TO SHIFT SUPPORT BRACKET (7/8")	31	29	10-45218	SCREW, TERMINAL BLOCK (3/8")	33	57
10-25612	SCREW, DRIVE - BELL HOUSING FLANGE	9	4	10-45590	SCREW, UPPER SHIFT LEVER TO SHIFT SHAFT (1 1/16")	9	27
10-25612	SCREW, DRIVE - GIMBAL HOUSING EXHAUST FLANGE	5	12	10-45716	SCREW, COVER TO REVERSE LOCK VALVE (15/16")	31	22
10-28634	SCREW, DRIVE SHAFT HOUSING GREASE FILLER AND VENT HOLE	11	16	10-46736	SCREW, CAM TO CAM LEVER (1/2")	31	15
10-28634	SCREW, GEAR HOUSING GREASE FILLER AND VENT HOLE	17	51	10-46942	SCREW, HARNESS ATTACHING (5/16")	7	10
10-28635	SCREW, COVER TO GIMBAL HOUSING (5/8")	5	38	10-48409	SCREW, TERMINAL BLOCK TO HYDRAULIC PUMP (1/2")	25	19
10-28635	SCREW, WATER TUBE SEALING COVER TO GIMBAL HOUSING (5/8")	5	32	10-52498	SCREW, SHIFT BRACKET TO FLYWHEEL HOUSING (1 1/2")	31	6
10-28668	SCREW, WATER POCKET COVER TO DRIVE SHAFT HOUSING (7/8")	11	10	10-57968	SCREW, ADJUSTING - MOUNTING BRACKET	29	26
10-29227	SCREW, HARNESS ATTACHING CLAMP (1/2")	27	48	10-58640	SCREW, TOP COVER TO DRIVE SHAFT HOUSING (1 1/4")	11	30
10-30206	SCREW, GEAR HOUSING TO DRIVE SHAFT HOUSING (1")	19	87	10-59784	SCREW, PUMP MOUNTING BRACKET ATTACHING (1")	25	9
10-30720	SCREW, WATER PUMP BODY TO GEAR HOUSING (2 1/4")	15	36	10-62568	SCREW, HARNESS LEADS TO TERMINAL BLOCK (3/8")	25	20
10-30902	SCREW, SWITCH ASSEMBLY TO TRANSOM PLATE (3/4")	33	51	10-62568	SCREW, SWITCH RETAINER TO CONTROL PANEL (1/2")	27	44
10-31700	SCREW, SET - SHIFT ACTUATING CABLE TO SLIDE	3	27	10-63400	SCREW, HARNESS ATTACHING (5/32")	7	10
10-31832	SCREW, MOUNTING BRACKET TO TRANSOM PLATE	29	24	10-66389	SCREW, LEVER TO LINK ROD	7	24
10-32470	SCREW, TRIM TAB TO GEAR HOUSING (1-3/4")	19	86	10-68298	SCREW, PUMP MOUNTING BRACKET TO TRANSOM (3 1/4")	25	15
10-32995	SCREW, STEERING LEVER TO UPPER SWIVEL SHAFT (2")	7	21	10-69052	SCREW, STARTER SOLENOID TO MOUNTING BRACKET (1/2")	25	29
10-33231	SCREW, TENSION SPRING TO ARM	33	42	10-76156	SCREW, INSERT TO GEAR HOUSING (1 7/8")	15	11
10-35386	SCREW, SHIFT BRACKET ATTACHING	33	53	11-20110	NUT, COVER SCREW	31	23
				11-20110	NUT, SHIFT CONTROL LEVER TO CAM LEVER STUD	31	32
				11-20220	NUT, TRANSOM PLATE TO ENGINE FLYWHEEL HOUSING SCREW	3	12
				11-20361	NUT, SHIFT BRACKET STUD	31	5



# PARTS INDEX

Part Number	Description	Pg.	Ref. No.	Part Number	Description	Pg.	Ref. No.
11-20361	NUT, SHIFT CABLE TO LEVER STUD	31	37	11-68219	NUT, STARTER SOLENOID TERMINAL (#10)	25	25
11-20696	NUT, STEERING LEVER TO UPPER SWIVEL SHAFT SCREW	7	22	11-68292	NUT, STARTER SOLENOID TERMINAL (5/16"-18)	25	27
11-21825	NUT, STARTER SOLENOID SCREW	25	31	12-20086	WASHER, STEERING LINK ROD (STEEL)	7	27
11-21908	NUT, HYDRAULIC PUMP SCREW	25	14	12-20260	WASHER, DRIVE SHAFT HOUSING GREASE FILLER AND VENT HOLE SCRE	11	17
11-22339	NUT, DRIVE GEAR TO UNIVERSAL JOINT	13	47	12-20260	WASHER, GEAR HOUSING GREASE FILLER AND VENT HOLE SCREW	17	52
11-24656	NUT, MOUNTING BRACKET TO HYDRAULIC PUMP THRU BOLT	25	36	12-20959	WASHER, VALVE ADAPTOR STUD	29	29
11-24883	NUT, ADJUSTING SCREW	29	28	12-21273	WASHER, CAM LEVER STUD	31	31
11-25599	NUT, UPPER SWIVEL SHAFT	7	18	12-21900	WASHER, GIMBAL HOUSING TO TRANSOM PLATE BOLT	3	13
11-27164	NUT, CONTROL PANEL STUD	25	40	12-22248	WASHER, SHIFT BRACKET ATTACHING SCREW	31	7
11-28040	NUT, VALVE ADAPTOR STUD	29	30	12-24676	WASHER, CONTROL PANEL STUD	25	39
11-32882	NUT, MOUNTING TUBE	29	31	12-26825	WASHER, SWITCH ACTUATING ARM STUD	33	48
11-34087	NUT, GIMBAL HOUSING TO TRANSOM PLATE BOLT	3	14	12-26825	WASHER, TENSION SPRING SCREW	33	43
11-34388	NUT, HARNESS ATTACHING CLAMP SCREW	27	49	12-27880	WASHER, LOWER SHIFT SHAFT AND CRANK	17	45
11-34932	NUT, FRONT ANCHOR PIN	23	12	12-28421	WASHER, TRANSOM PLATE SCREW	3	8
11-34932	NUT, REAR ANCHOR PIN	23	17	12-29245	WASHER, PUMP MOUNTING BRACKET	25	10
11-34933	NUT, BELL HOUSING STUD	9	14	12-29245	WASHER, WATER PUMP BODY STUD	17	40
11-34933	NUT, DRIVE SHAFT HOUSING TO GEAR HOUSING STUD)	19	88	12-29395	WASHER, SHIFT SHAFT	17	50
11-34933	NUT, GEAR HOUSING TO DRIVE SHAFT HOUSING STUD	11	6	12-31211A2	WASHER, SPLINED - PROPELLER SHAFT	19	82
11-34933	NUT, GIMBAL HOUSING STUD	5	28	12-31266	WASHER, RUBBER - SHIFT SHAFT BUSHING	17	49
11-35304	NUT, PUMP MOUNTING BRACKET SCREW	25	16	12-32518	WASHER, GIMBAL HOUSING TO LOWER SWIVEL PIN	5	19
11-35814	NUT, SWITCH ACTUATING ARM STUD	33	49	12-32620	WASHER, GIMBAL HOUSING BOLT	5	23
11-35888	NUT, GIMBAL HOUSING TO HYDRAULIC CONNECTOR STUD	5	36	12-32666	WASHER, INTERMEDIATE SHIFT SHAFT	9	24
11-35888	NUT, WATER PUMP BODY STUDS (1/4-28)	17	38	12-32834	WASHER, TRANSOM PLATE SCREW	3	10
11-35921	NUT, PINION GEAR TO DRIVE SHAFT	15	18	12-32997	WASHER, UPPER SWIVEL SHAFT (.063)	7	20
11-37984	NUT, CABLE GUIDE TUBE	29	21	12-34567	WASHER, GIMBAL HOUSING STUD	5	27
11-37984	NUT, JAM - STEERING CABLE GUIDE TUBE	3	16	12-34966	WASHER, STEERING LINK ROD (NYLON)	7	25
11-45592	NUT, WATER PUMP BODY STUDS (5/16-24)	17	39	12-35935	WASHER, BELL HOUSING STUD	9	13
11-45812	NUT, INSERT SCREW	15	12	12-35965	WASHER, CUPPED	19	81
11-52707A1	PROPELLER NUT	19	84	12-36001	WASHER, WATER PUMP BODY SCREW	17	37
11-55111	NUT, DUAL ADAPTOR TO POWER STEERING VALVE	29	18				
11-55438	NUT, STEERING LINK ROD	7	28				
11-55983	NUT, JAM - MOUNTING TUBE	29	33				

# PARTS INDEX

Part Number	Description	Pg.	Ref. No.	Part Number	Description	Pg.	Ref. No.
12-37985	WASHER, CABLE GUIDE TUBE	29	20	13-37459	LOCKWASHER, CLAMPING SCREW	29	14
12-37985	WASHER, STEERING CABLE GUIDE TUBE	3	17	13-39107	LOCKWASHER, HYDRAULIC PUMP SCREW	25	13
12-39116	WASHER, UPPER SHIFT LEVER	9	26	13-39107	LOCKWASHER, REVERSE LOCK VALVE SCREW	31	30
12-39143	WASHER, SHIFT CABLE TO LEVER STUD	31	4	13-39107	LOCKWASHER, SHIFT BRACKET ATTACHING SCREW	33	54
12-39143	WASHER, SHIFT LEVER STUD	31	36	13-54667	WASHER, SPRING - STEERING LINK ROD	7	26
12-45713	WASHER, RETAINING - BALL TO VALVE COVER	31	17	14-31210	TAB WASHER, PROPELLER NUT	19	83
12-45737	WASHER, FRONT ANCHOR PIN	23	8	14-79447	TAB WASHER, GEAR HOUSING COVER	19	78
12-45737	WASHER, REAR ANCHOR PIN	23	14	15-31535A1	SHIM	19	72
12-45810	WASHER, DRIVE GEAR TO UNIVERSAL JOINT NUT	13	46	15-35980A1	SHIM, BEARING CUP TO DRIVE SHAFT HOUSING (.002-3-5-10-15)	13	44
12-46765	WASHER, FRONT ANCHOR PIN	23	11	15-36178A1	SHIM, BEARING CUP TO DRIVE SHAFT HOUSING (.002-3-5-10-15)	11	20
12-46765	WASHER, REAR ANCHOR PIN	23	16	15-45691A1	SHIM, BEARING CUP TO TOP COVER	11	28
12-47683	WASHER, UPPER SWIVEL SHAFT (.031)	7	20	15-47397A1	SHIM	19	61
12-56085	WASHER, ANODIC BOLT ASSEMBLY	5	22	15-57007A1	SHIM, DRIVE SHAFT BEARING TO GEAR HOUSING (.002-3-5-10-20)	15	19
12-59570	WASHER, VALVE COVER	31	21	15-71013	SHIM, BEARING CUP TO DRIVE SHAFT HOUSING	13	45
12-72498	WASHER, SYNTHANE - BELL HOUSING	9	11	16-45715	STUD, SHIFT CONTROL LEVER TO CAM LEVER (23/32")	31	26
13-20897	LOCKWASHER, DUAL ADAPTER NUT	29	17	16-46911	STUD, GEAR HOUSING TO DRIVE SHAFT HOUSING (3 3/16")	15	3
13-25906	WASHER, WAVE - REVERSE LOCK VALVE	31	12	16-47360	STUD, SHIFT CABLE TO BRACKET (1 3/4")	31	2
13-26992	LOCKWASHER, CONTROL VALVE SCREW	25	6	16-55109	STUD, ADAPTOR - POWER STEERING VALVE	29	12
13-26992	LOCKWASHER, MOUNTING BRACKET SCREW	25	34	16-55422	STUD, CONTROL PANEL TO BOAT (2")	25	38
13-26992	LOCKWASHER, STARTER SOLENOID SCREW	25	30	16-56295	STUD, DRIVE SHAFT HOUSING TO GEAR HOUSING (2 11/16")	11	2
13-26993	LOCKWASHER, STARTER SOLENOID TERMINAL (5/16")	25	26	16-56296	STUD, GIMBAL HOUSING TO TRANSOM PLATE (4 3/4")	5	2
13-26996	LOCKWASHER, CAM SCREW	31	16	16-56297	STUD, WATER PUMP BASE AND BODY TO GEAR HOUSING (3 3/8")	15	6
13-26996	LOCKWASHER, STARTER SOLENOID TERMINAL (#10)	25	24	16-56298	STUD, GEAR HOUSING TO DRIVE SHAFT HOUSING (1 31/32")	15	4
13-26996	LOCKWASHER, SWITCH AND SENDER SCREW	7	13	16-56766	STUD, HYDRAULIC CONNECTOR TO GIMBAL HOUSING	5	15
13-26996	LOCKWASHER, TERMINAL BLOCK SCREW	33	58	16-59579	STUD, BELL HOUSING TO DRIVE SHAFT HOUSING	9	12
13-26996	LOCKWASHER, THRU BOLT	21	15	16-63081	STUD, CABLE TO LEVER	31	34
13-31848	LOCKWASHER, MOUNTING BRACKET SCREW	29	25				
13-33734A1	LOCKWASHER, TRANSOM PLATE SCREW	3	11				
13-37272	LOCKWASHER, TRANSOM PLATE SCREW	3	5				
13-37459	LOCKWASHER, ADJUSTING SCREW	29	27				

# PARTS INDEX

Part Number	Description	Pg.	Ref. No.	Part Number	Description	Pg.	Ref. No.
16-69501	STUD, WATER PUMP BASE AND BODY TO GEAR HOUSING (3 1/4")	15	7	22-49718	NUT, COMPRESSION - HYDRAULIC TUBE ATTACHING	23	2
16-73563	STUD, SWITCH ACTUATING ARM TO SHIFT BRACKET (2 5/16")	31	3	22-49718	NUT, TUBING ATTACHING	31	28
17-30545	PIN, DRIVE SHAFT	15	14	22-52644	PLUG, PIPE - REVERSE LOCK VALVE	31	24
17-30632	CROSS PIN	19	66	22-67305	FITTING, GREASE - POWER STEERING VALVE	29	11A
17-35973	DOWEL PIN, WATER PUMP BASE TO WATER PUMP BODY	15	26	22-69059	FITTING, GREASE - GIMBAL RING (1/8-27)	7	5
17-37972	PIN, SHIFT CRANK - GEAR HOUSING	15	2	22-74036	FITTING, GREASE - GIMBAL HOUSING (STAINLESS STEEL)	5	7
17-45212	PIN, SWIVEL - GIMBAL HOUSING TO GIMBAL RING (LOWER)	5	17	22-74036	FITTING, GREASE - GIMBAL RING (1/4-28)	7	5A
17-45735	PIN, FRONT ANCHOR - TRIM CYLINDER TO GIMBAL RING (10 11/32")	23	7	23-28055	BUSHING, RUBBER - WATER TUBE SEALING	5	30
17-45738	PIN, REAR ANCHOR - TRIM CYLINDER TO DRIVE SHAFT HSG. (7 1/2")	23	13	23-29804	SLEEVE, GUIDE - WATER INLET TUBE	17	42
17-46912	PIN, DOWEL - GEAR HOUSING TO DRIVE SHAFT HOUSING	15	8	23-30617A2	BUSHING ASSEMBLY, SHIFT SHAFT	17	47
17-52798	PIN, CLEVIS - STEERING CABLE AND CLEVIS ATTACHING	29	36	23-31866	SPACER, SHIFT LEVER STUD	31	35
18-20233	CLIP, RETAINING - SHIFT SHAFT	17	44	23-32632	BUSHING, DRIVE SHAFT HOUSING	11	5
18-32665	COTTER PIN, INTERMEDIATE SHIFT SHAFT RETAINING	9	23	23-35088	BUSHING, BELL HOUSING (5/8")	9	6
18-32857	COTTER PIN, SHIFT ACTUATING CABLE TO ACTUATING ARM	33	45	23-35985	SPACER, ROLLER BEARING CUPS	13	43
18-34212	COTTER PIN, RETAINING - LOWER SWIVEL PIN	5	18	23-36290	SPACER, TRANSOM PLATE SCREW	3	9
18-45882	COTTER PIN, LINK ROD AND SCREW	7	29	23-37981	SPACER, SWITCH ACTUATING ARM TO TRANSOM PLATE	33	47
18-46950	COTTER PIN, CLEVIS PIN RETAINING	29	37	23-39273	SPACER, GIMBAL RING	7	4
18-89212	COTTER PIN, CLUTCH ACTUATING SHAFT	19	53	23-45588	BUSHING, BELL HOUSING (5/16")	9	8
19-32298	PLUG, TRIM TAB HOLE - DRIVE SHAFT HOUSING	11	12	23-45600	SLEEVE, SWITCH ACTUATING ARM STUD	33	46
19-32652	WELCH PLUG, DRIVE SHAFT HOUSING	11	4	23-60652	SLEEVE, ADJUSTING - CABLE GUIDE TUBE	29	15A
22-31704	PLUG, PIPE - DRIVE SHAFT HOUSING (WATER POCKET)	11	3	23-60773	SLEEVE, ADJUSTING - CABLE GUIDE TUBE	29	15
22-32561	PLUG, PIPE - UPPER SWIVEL SHAFT	7	19	23-61290	BUSHING, RUBBER - FRONT ANCHOR PIN	23	9
22-33066	CONNECTOR, WATER HOSE TO BELL HOUSING	9	3	23-61290	BUSHING, RUBBER - REAR ANCHOR PIN	23	15
22-38609	PLUG, CONTROL VALVE	25	4	23-66824	SPACER, ROLLER BEARING CUPS	13	43
22-45794	ELBOW, HYDRAULIC TRIM HOSE TO REVERSE LOCK VALVE	31	9	24-30893	SPRING, RETAINER - CROSS PIN	19	67
22-48167	CONNECTOR, ELBOW	31	10	24-34576	SPRING, COMPRESSION - DRIVE SHAFT	15	15
				24-45599	SPRING, TENSION - SWITCH ACTUATING ARM	33	44
				24-46312	SPRING, FRONT ANCHOR PIN	23	10
				25-20863	"O" RING, GIMBAL HOUSING	5	13
				25-21720	"O" RING, HYDRAULIC PUMP	21	1

# PARTS INDEX

Part Number	Description	Pg.	Ref. No.	Part Number	Description	Pg.	Ref. No.
25-21720	"O" RING, HYDRAULIC PUMP TO CONTROL VALVE	25	2	27-32434	GASKET, UPPER - FACE PLATE TO WATER PUMP BODY	15	29
25-21720	"O" RING, HYDRAULIC PUMP TO CONTROL VALVE (SEE REFERENCE #2)	25	-	27-33146	GASKET, WATER PUMP BASE TO GEAR HOUSING	15	21
25-23145	"O" RING, GIMBAL HOUSING	5	14	27-35982	GASKET, RUBBER - BELL HOUSING	9	9
25-25439	"O" RING, SHIFT SHAFT BUSHING	17	46	27-47644	GASKET, HYDRAULIC CONNECTOR	5	34
25-25439	"O" RING, UNIVERSAL JOINT RING, RUBBER - CENTRIFUGAL SLINGER (DRIVE SHAFT)	13	36	27-55810	GASKET, WATER POCKET COVER	11	9
25-30271		17	41	27-64818	GASKET, DRIVE SHAFT HSG. TO BELL HSG. (PART OF DRIVE SHAFT)	9	2
25-30613	"O" RING, UPPER - DRIVE SHAFT	15	16	28-30281	KEY	19	77
25-31534	O-RING, BEARING CARRIER	19	73	28-56654	PIN, IMPELLER DRIVE	15	35
25-32546	"O" RING, TOP COVER SEALING	11	29	30-17927	BALL BEARING, REVERSE GEAR	19	71
25-33145	"O" RING, WATER PUMP BASE	15	22	30-45712	BALL, VALVE COVER	31	18
25-33504	"O" RING, BELL HOUSING	9	10	30-60794A2	BEARING ASSEMBLY, BALL - GIMBAL HOUSING	5	10
25-45710	"O" RING, REVERSE LOCK VALVE	31	13	31-21145	ROLLER BEARING, GIMBAL HOUSING (UPPER)	5	5
25-45711	"O" RING, VALVE COVER	31	20	31-30895	ROLLER BEARING, FORWARD GEAR	19	63
25-55801	"O" RING, UPPER DRIVE SHAFT	11	24	31-30956	ROLLER BEARING	19	75
25-60342A2	"O" RING KIT	35	-	31-32536	BEARING, ROLLER - GIMBAL HOUSING (LOWER)	5	3
25-60342A2	"O" RING REPAIR KIT, TRIM CYLINDER	23	-	31-32538	BEARING, ROLLER - GIMBAL RING	7	2
25-70937	"O" RING, OIL SEAL CARRIER	13	39	31-35928A1	TAPERED ROLLER BEARING ASSEMBLY	19	64
26-31507	OIL SEAL, WATER PUMP BASE	15	25	31-35934	BEARING, ROLLER - DRIVE SHAFT	15	9
26-32511	OIL SEAL, GEAR CHAMBER - DRIVE SHAFT HOUSING	11	19	31-35988A2	ROLLER BEARING ASSEMBLY, DRIVE GEAR	13	42
26-32541	OIL SEAL, GIMBAL RING	7	3	31-35988A3	ROLLER BEARING ASSEMBLY, DRIVE GEAR	13	42
26-32911	OIL SEAL, LOWER GIMBAL HOUSING ROLLER BEARING	5	4	31-35990A1	ROLLER BEARING ASSEMBLY, PINION GEAR	11	21
26-33144	OIL SEAL, WATER PUMP BASE	15	24	31-53079A1	TAPERED ROLLER BEARING ASSEMBLY, DRIVE SHAFT	15	20
26-36143	SEAL, GREASE - GIMBAL HOUSING	5	9	31-61100A1	BEARING ASSEMBLY, DRIVE SHAFT	11	26
26-36557	SEAL, RUBBER - WATER POCKET COVER	11	8	31-66818A1	ROLLER BEARING ASSEMBLY, PINION GEAR	11	21
26-37259	OIL SEAL, DRIVE SHAFT HOUSING - LOWER	11	18	32-34049	TUBE, NYLON - SHIFT ACTUATING CABLE GUIDE	3	25
26-38970	SEAL, RUBBER - WATER INLET TUBE	15	33	32-38377	TUBE, SHIFT ACTUATING CABLE	3	20
26-45577	SEAL, GEAR HOUSING	15	5	32-47642	HOSE, WATER - BELL HOUSING TO GIMBAL HOUSING	9	17
26-45587	OIL SEAL, BELL HOUSING	9	7	32-52951A1	TUBING ASSEMBLY, REVERSE LOCK VALVE TO TRIM SENDER	31	27
26-46021	OIL SEAL, SHIFT SHAFT BUSHING	17	48	32-54236	TUBE, WATER - WATER POCKET COVER	11	11
26-54925	OIL SEAL, UPPER GIMBAL HOUSING BEARING	5	6	32-55112	TUBE, CABLE GUIDE	29	19
26-68493	OIL SEAL, CARRIER	13	41				
26-76868	OIL SEAL	19	76				

# PARTS INDEX

Part Number	Description	Pg.	Ref. No.	Part Number	Description	Pg.	Ref. No.
32-55116	HOSE, PRESSURE - POWER STEERING (72") . . . . .	29	5	54-32533	CLAMP, EXHAUST BELLOWS ATTACHING . .	9	20
32-57633	TUBE, EXTENDING - POWER STEERING . . . . .	29	9	54-35830	CLAMP, RETURN HOSE TO HYDRAULIC PUMP . . . . .	29	4
32-57634	TUBE, RETRACTING - POWER STEERING . . . . .	29	10	54-38863	CLAMP, ACTUATING CABLE BELLOWS TO SHIFT ACTUATING CABLE . . . . .	5	25
32-58432A2	TUBING, HYDRAULIC PUMP TO VALVE . . . . .	23	1	54-46770	CLAMP, HARNESS ATTACHING . . . . .	27	47
32-59841	HOSE, HYDRAULIC - CONNECTOR TO REVERSE LOCK VALVE (44") . . . . .	23	3	84-61109	BATTERY LEAD (POSITIVE)	27	50
32-59842	HOSE, HYDRAULIC - CONNECTOR TO TRIM SENDER (29 1/2") . . . . .	23	4	84-61110	BATTERY LEAD (NEGATIVE)	27	50
32-60542	TUBE, WATER - GIMBAL HOUSING . . . . .	5	29	84-70967	HARNESS, DUMMY SENDER	7	9
32-65231	HOSE, RETURN - OIL COOLER TO HYDRAULIC PUMP (40") . . . . .	29	3A	84-70968	HARNESS, TRIM LIMIT SWITCH . . . . .	7	9
32-65929	HOSE, RETURN - VALVE TO OIL COOLER (32") . . . . .	29	3	84-74023	CONNECTOR AND HARNESS (GREEN LEAD 5 1/2" LONG) . . . . .	25	17
32-68676	HOSE, HYDRAULIC - CONNECTOR TO TRIM CYLINDER (12 1/2") . . . . .	23	5	85-63990	INSULATOR, SWITCH AND SENDER . . . . .	7	11
37-76731A1	DECAL SET, DRIVE SHAFT HOUSING . . . . .	11	14	86-66986	TERMINAL BLOCK, SHIFT BRACKET . . . . .	33	55
37-76733	DECAL, GIMBAL HOUSING . . . . .	5	16	89-68258	STARTER SOLENOID . . . . .	25	23
37-76998	DECAL, DRIVE SHAFT HOUSING "228" . . . . .	11	15A	392-2529	SPRING SET, BRUSH TENSION . . . . .	21	13
37-77275	DECAL, DRIVE SHAFT HOUSING "250" . . . . .	11	15B	392-2618	CAM, VALVE BODY . . . . .	21	3
37-77649	DECAL, DRIVE SHAFT HOUSING "898" . . . . .	11	15	392-2623	WASHER, THRUST - ARMATURE . . . . .	21	7
43-59832A2	GEAR ASSEMBLY, COMPLETE (1.50 RATIO) . . . . .	11	22	392-2936	VALVE BODY AND GEAR ASSEMBLY . . . . .	21	2
43-61026	REVERSE GEAR . . . . .	19	69	392-2937	SEAL, RESERVOIR TO VALVE BODY AND GEAR	21	5
43-61027	GEAR, PINION - DRIVE SHAFT . . . . .	15	17	392-2938	BOLT SET, THRU - PLATE AND FRAME TO RESERVOIR . . . . .	21	14
43-66773A2	GEAR ASSEMBLY, COMPLETE (1.32 RATIO) . . . . .	11	22	392-2939	RESERVOIR ASSEMBLY . . . . .	21	6
43-92158A1	FORWARD GEAR . . . . .	19	62	392-2940	PLATE ASSEMBLY, COMMUTATOR END . . . . .	21	11
44-66060	PROPELLER SHAFT . . . . .	19	68	392-2941	BRUSH SET, COMMUTATOR END PLATE . . . . .	21	12
45-55757A1	DRIVE SHAFT ASSEMBLY . . . . .	15	13	392-2942	FIELD AND FRAMWE ASSEMBLY . . . . .	21	9
45-55796	DRIVE SHAFT, UPPER . . . . .	11	23	392-2943	ARMATURE, FIELD AND FRAME . . . . .	21	8
46-57234A1	WATER PUMP BASE ASSEMBLY . . . . .	15	23	392-2944	BALL, COMMUTATOR END PLATE . . . . .	21	10
46-64141A1	WATER PUMP BODY ASSEMBLY . . . . .	15	30	1547-5523A18	DRIVE SHAFT HOUSING ASSEMBLY . . . . .	11	1
47-65960	IMPELLER, WATER PUMP . . . . .	15	34	1623-5356A3	GEAR HOUSING ASSEMBLY, COMPLETE (SEE NOTE BELOW) . . . . .	15	-
52-66063	CLUTCH . . . . .	19	65	1623-5356A4	GEAR HOUSING . . . . .	19	1
53-72413	RETAINING RING, UPPER SWIVEL SHAFT . . . . .	7	17	1623-5356A4	GEAR HOUSING ASSEMBLY	15	1
54-31765	CLAMP, UNIVERSAL JOINT BELLOWS TO BELL HSG. AND GIMBAL HSG. . . . .	9	16	1623-8951A2	GEAR HOUSING . . . . .	19	-
54-31766	CLAMP, SHIFT ACTUATING CABLE BELLOWS TO GIMBAL HOUSING . . . . .	5	26				