



PARTS CATALOG

MERC 110

SERIAL NUMBER

| | |
|-----------|--------------------------|
| 110 | USA 4839254 THRU 5206549 |
| 110 | CAN 7111348 THRU 7125387 |
| 110 | 8050625 THRU 8057544 |
| 110 | BEL 9165303 THRU 9217755 |

TABLE OF CONTENTS:

| | |
|--|----|
| BOTTOM COWL AND STOP SWITCH ASSEMBLY | 28 |
| CARBURETOR AND CHOKE ASSEMBLY | 14 |
| CARBURETOR ASSEMBLY, COMPLETE | 10 |
| CLAMP BRACKET ASSEMBLY | 34 |
| CRANKSHAFT AND MAIN BEARING ASSEMBLY | 22 |
| CYLINDER BLOCK AND CRANKCASE ASSEMBLY | 20 |
| DRIVE SHAFT HOUSING ASSEMBLY | 30 |
| ELECTRIC COMPONENTS | 44 |
| FLYWHEEL AND IGNITION COIL | 6 |
| GEAR HOUSING ASSEMBLY, COMPLETE (PAGE 1) | 36 |
| GEAR HOUSING ASSEMBLY, COMPLETE (PAGE 2) | 40 |
| IGNITION COMPONENTS | 8 |
| MISCELLANEOUS PARTS AND ACCESSORIES | 1 |
| PARTS INDEX | 46 |
| PISTON AND CONNECTING ROD ASSEMBLY | 24 |
| SHIFT CONTROL LINKAGE | 16 |
| STEERING HANDLE ASSEMBLY | 26 |
| SWIVEL BRACKET ASSEMBLY | 32 |
| THROTTLE CONTROL LINKAGE | 18 |
| TOP COWL AND STARTER ASSEMBLY | 2 |

NOTE: Indented description indicate that these parts are included in preceeding assembly.

AR = As Required

NSS = Not Sold Separate

OPT = Optional

NS = Not Shown

NOTE: Following symbols are located in **SYM** column.

● = THE ENCLOSED GEAR HOUSINGS
INCLUDE ALL PARTS FROM REFERENCE
#1- #66 AS LISTED ON THIS PAGE

■ = COMPONENT OF REPAIR PARTS KIT.

◇ = COMPONENT OF GASKET AND PACKING
SET.

▲ = FOR MERC 110L LONG SHAFT ENGINES,
REPLACE 2 LOWER MOUNTS [A-77754]
WITH 2 ([A-77755] MOUNTS.

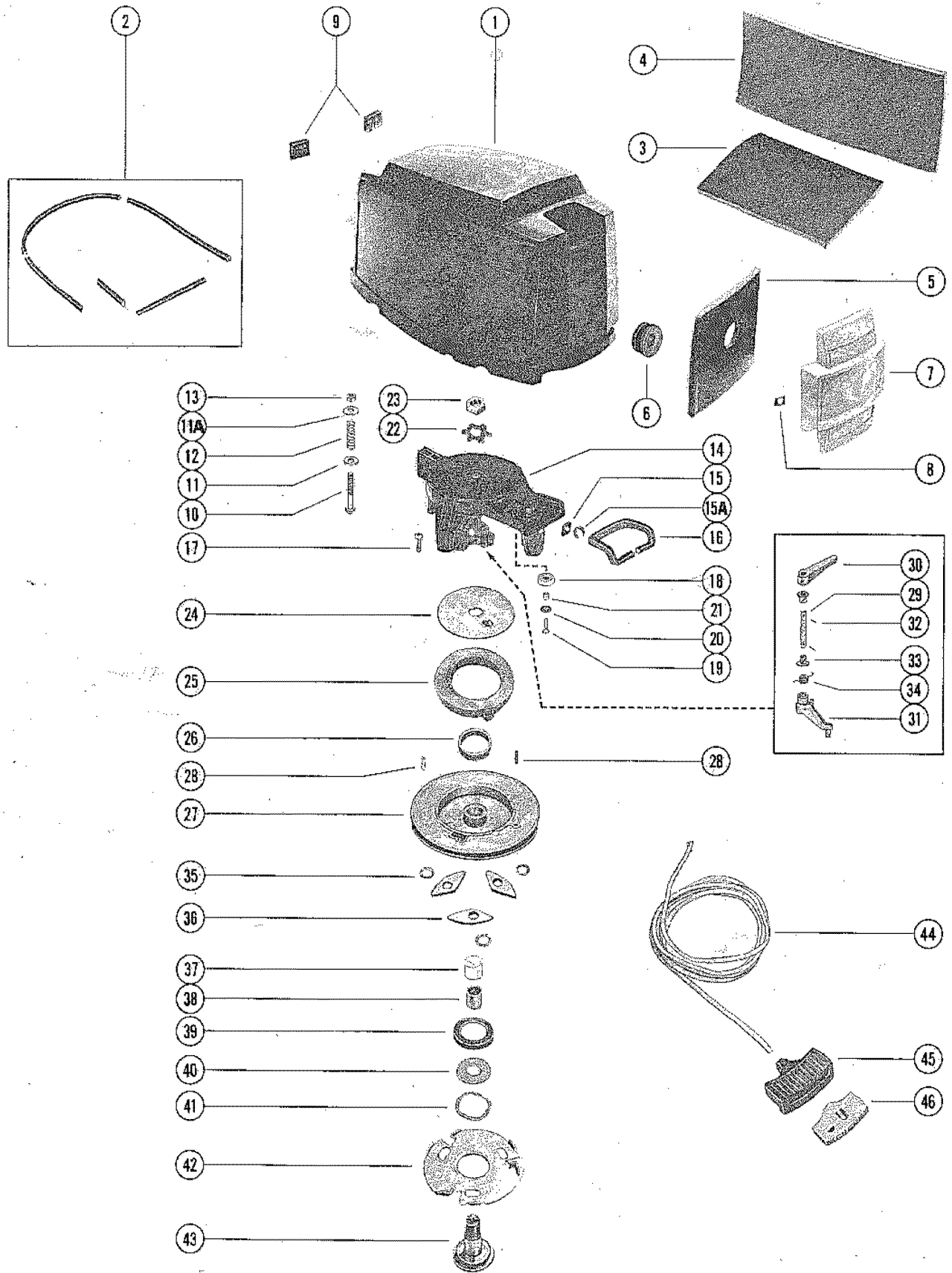
✚ = COMPONENT OF DIAPHRAGM AND
GASKET KIT.

THESE PARTS BOOKS/FICHE CARD ARE COPYRIGHTED AND MAY NOT BE DISTRIBUTED OR REPRODUCED IN ANY OTHER FORMAT BY ANYONE OTHER THAN MERCURY MARINE WITHOUT THE PRIOR WRITTEN CONSENT OF MERCURY MARINE.

MISCELLANEOUS PARTS AND ACCESSORIES

| REF. NO. | PART NO. | SYM. | QTY. | DESCRIPTION |
|----------|-------------|------|------|-----------------------------|
| - | 37-48602A78 | | - | DECAL SET |
| - | 27-66358A74 | | - | GASKET SET (MOTOR OVERHAUL) |
| - | 24789A1 | | - | FLUSHING ASSEMBLY |
| - | 90--79169 | | 0 | MERC 110 PARTS LIST |
| - | 46-46893A2 | | - | RESISTANT WATER PUMP KIT |

TOP COWL AND STARTER ASSEMBLY

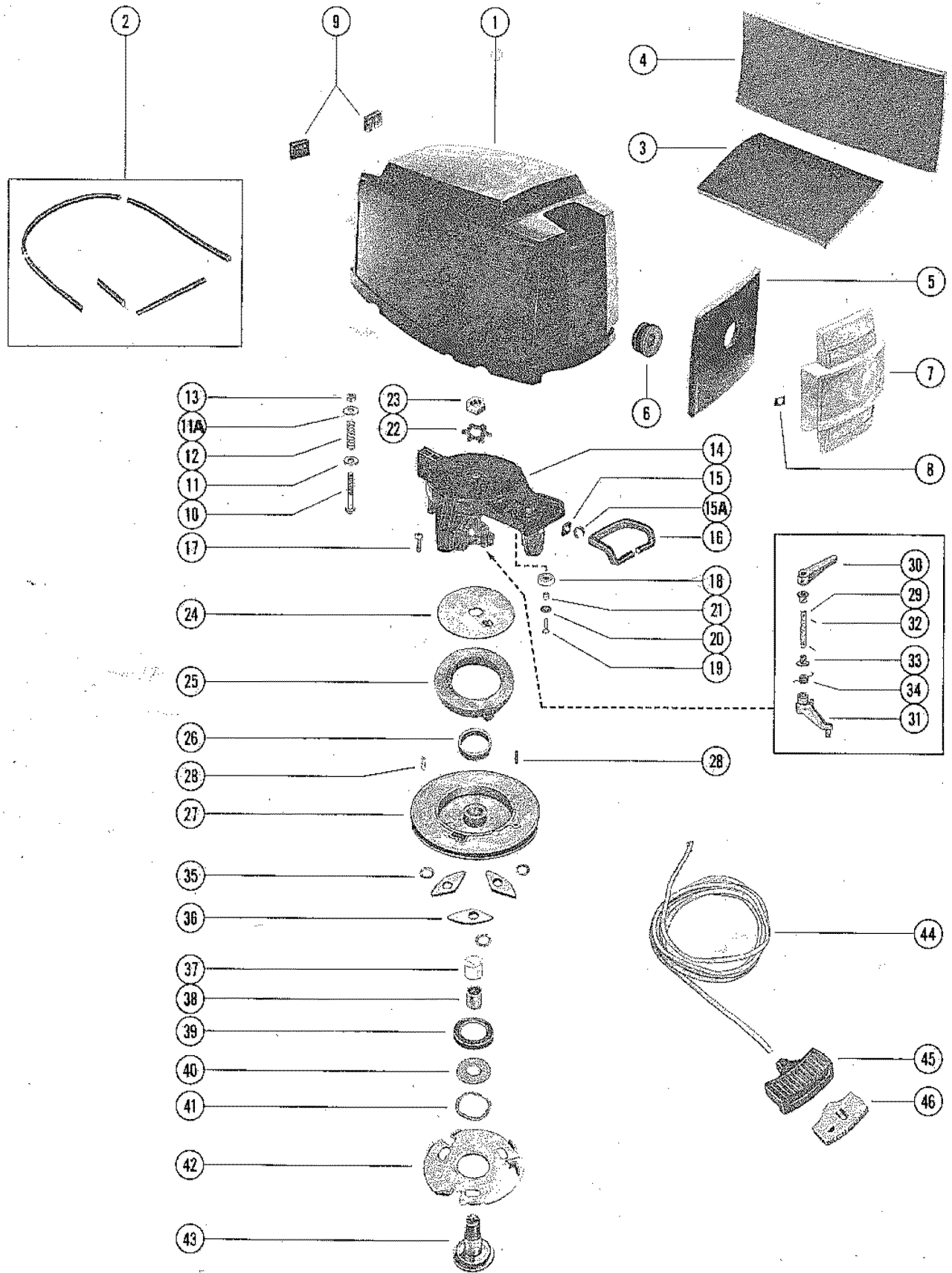


TOP COWL AND STARTER ASSEMBLY

| REF. NO. | PART NO. | SYM. | QTY. | DESCRIPTION |
|----------|-------------|------|------|---|
| 1 | 2160-6108A6 | | 1 | TOP COWL ASSEMBLY |
| 2 | 65489--3 | | 5 | SEAL, TOP COWL (16 1/2") |
| 3 | 66942 | | 1 | BLANKET, TOP COWL - TOP |
| 4 | 66941 | | 2 | BLANKET, TOP COWL - SIDE |
| 5 | 69522 | | 1 | BLANKET, TOP COWL - FRONT |
| 6 | 25-39086 | | 1 | GROMMET, COWL LATCH - TOP COWL |
| 7 | 71502 | | 1 | COVER, FRONT |
| 8 | 11-65517 | | 4 | NUT, SPEED - FRONT COVER TO COWL |
| 9 | 69346 | | 2 | BUMPER, COWL - REAR |
| 10 | 17-72856 | | 1 | PIN, TOP COWL CATCH |
| 11 | 12-65567 | | 1 | WASHER, TOP COWL CATCH (LOWER) |
| 11A | 12-57427 | | 1 | WASHER, TOP COWL CATCH (UPPER) |
| 12 | 24-79351 | | 1 | SPRING, COMPRESSION - COWL CATCH |
| 13 | 11-46887 | | 1 | NUT, COWL CATCH TO TOP COWL |
| 14 | 78777A1 | | 1 | STARTER HOUSING ASSEMBLY |
| 15 | 77859 | | 1 | INSERT, ROPE GUIDE - STARTER HOUSING |
| 15A | 77860 | | 1 | RING, RETAINING - ROPE GUIDE INSERT |
| 16 | 65499--1 | | 1 | SEAL, STARTER HOUSING TO TOP COWL |
| 17 | 10-72862 | | 3 | SCREW, STARTER HOUSING TO CRANKCASE (1") |
| 18 | 55860 | | 1 | PULLEY, STARTER CABLE |
| 19 | 10-28789 | | 1 | SCREW, CABLE PULLEY TO STARTER HOUSING (3/4") |
| 20 | 12-22887 | | 1 | WASHER, CABLE PULLEY SCREW |
| 21 | 23-30977 | | 1 | SPACER, CABLE PULLEY |
| 22 | 14-20165 | | 1 | TAB WASHER, SHEAVE SHAFT NUT |
| 23 | 11-20166 | | 1 | NUT, SHEAVE SHAFT (LEFT HAND THREAD) |
| 24 | 20155 | | 1 | RETAINER, STARTER SPRING |
| 25 | 24-29340A1 | | 1 | SPRING, STARTER REWIND |
| 26 | 23-28912 | | 1 | BUSHING, STARTER SPRING GUIDE |
| 27 | 50-74346A1 | | 1 | STARTER SHEAVE ASSEMBLY |
| 28 | 17-22896 | | 1 | PIN, RETAINER - STARTER CABLE |
| 29 | 74359 | | 1 | SHAFT, INTERLOCK |
| 30 | 74353 | | 1 | LEVER, LOCK |
| 31 | 74351 | | 1 | LEVER, FOLLOWER |
| 32 | 17-38489 | | 2 | ROLL PIN, INTERLOCK SHAFT |
| 33 | 23-26856 | | 2 | BUSHING, NYLON - INTERLOCK SHAFT |
| 34 | 24-74347 | | 1 | SPRING, TORSION - INTERLOCK SHAFT |
| 35 | 13-36206 | | 3 | WASHER, WAVE - STARTER PAWL |
| 36 | 30596 | | 3 | PAWL, STARTER |
| 37 | 23-28919 | | 1 | BUSHING, NYLON - SHEAVE SHAFT SPACER |
| 38 | 23-61005 | | 1 | SPACER, SHEAVE SHAFT |
| 39 | 26179 | | 1 | RETAINER, SHEAVE SHAFT TO STARTER SHEAVE |
| 40 | 12-35559 | | 1 | WASHER, SHEAVE SHAFT RETAINER |
| 41 | 13-20160 | | 1 | WASHER, WAVE - RETAINER TENSION |

CONTINUED ON NEXT PAGE ➡

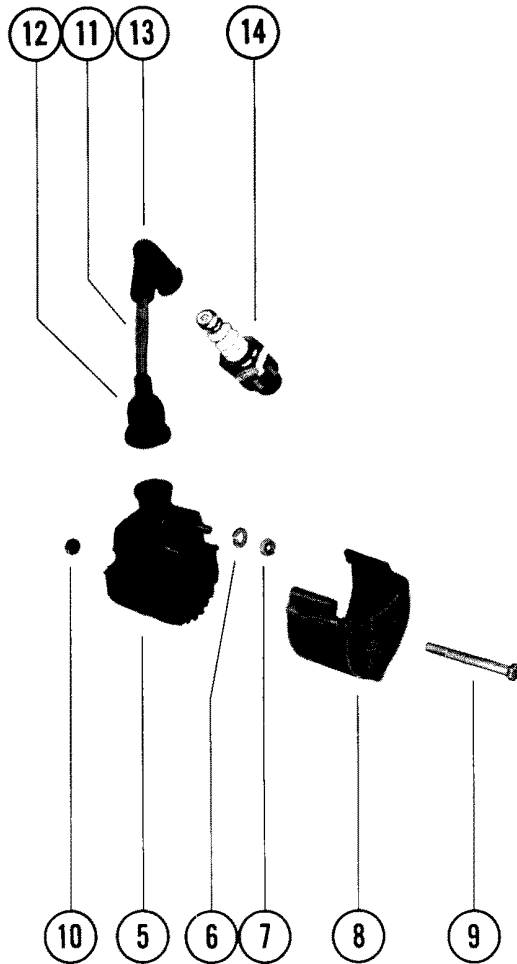
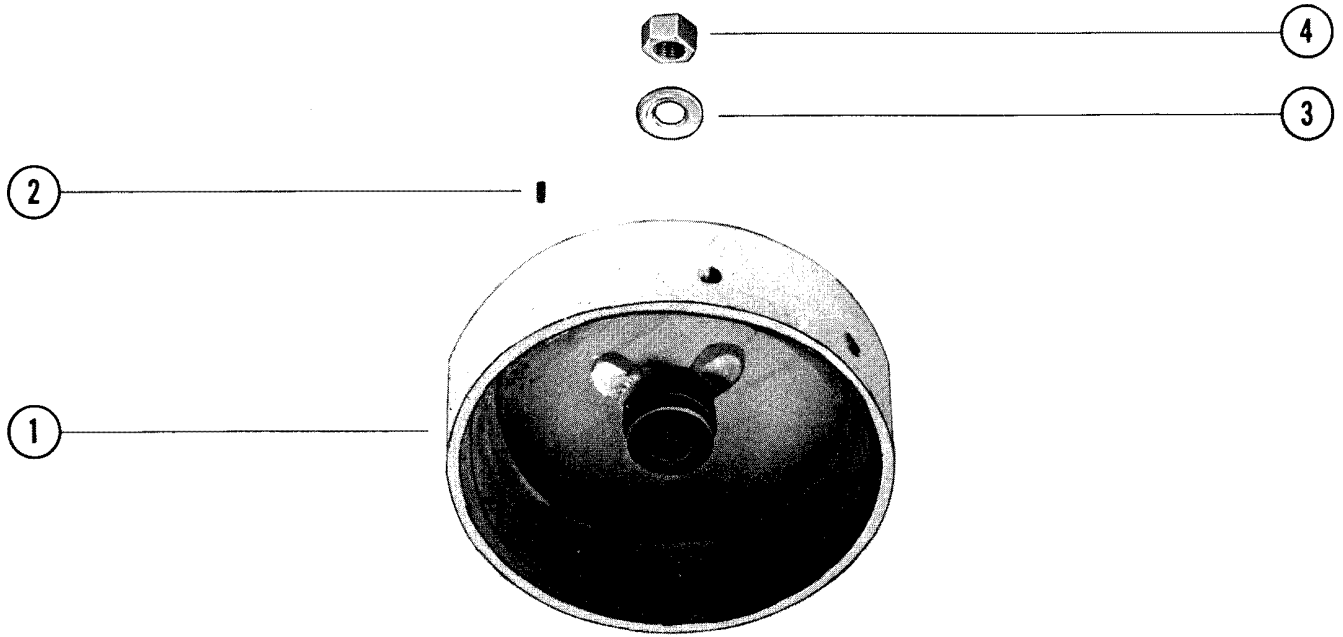
TOP COWL AND STARTER ASSEMBLY



TOP COWL AND STARTER ASSEMBLY

| REF. NO. | PART NO. | SYM. | QTY. | DESCRIPTION |
|----------|------------|------|------|---|
| 42 | 30595 | | 1 | PLATE, RETAINER - STARTER PAWL |
| 43 | 35558 | | 1 | SHAFT, SHEAVE |
| 44 | 50-61575A1 | | 1 | STARTER CABLE ASSEMBLY |
| 45 | 77998 | | 1 | HANDLE, STARTER CABLE |
| 46 | 77997A1 | | 1 | RETAINER ASSEMBLY STARTER CABLE AND HANDLE |

FLYWHEEL AND IGNITION COIL

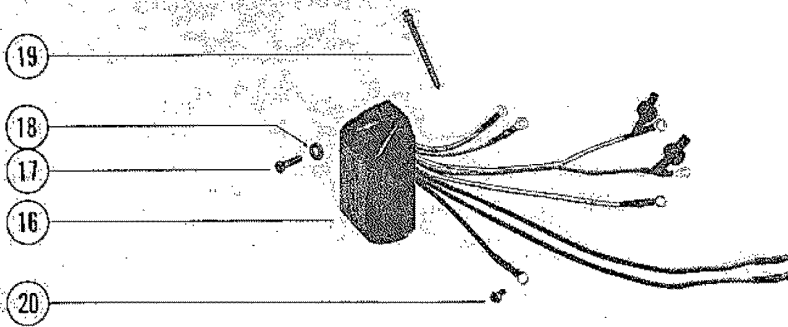
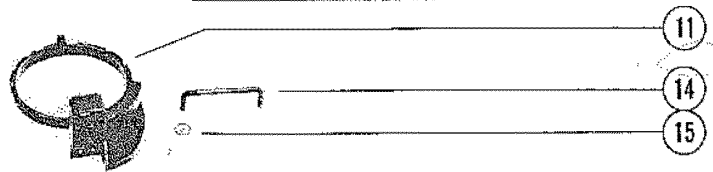
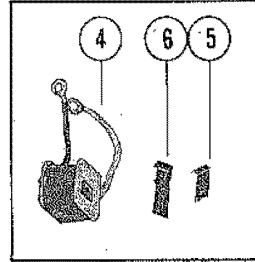
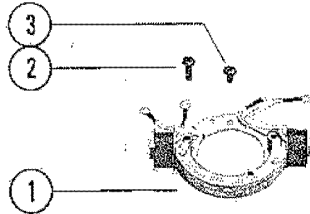
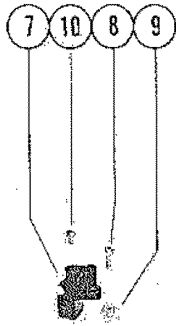


FLYWHEEL AND IGNITION COIL

| REF. NO. | PART NO. | SYM. | QTY. | DESCRIPTION |
|-------------|------------|------|------|---|
| 1 | 251-6194A1 | | 1 | FLYWHEEL ASSEMBLY (MANUAL) |
| | 251-6105A1 | | 1 | FLYWHEEL ASSEMBLY (ELECTRIC) |
| | 251-6105A3 | | 1 | FLYWHEEL ASSEMBLY (BELGIUM) |
| 2 | 28-20094 | | 1 | KEY, FLYWHEEL DRIVE |
| 3 | 12-36245 | | 1 | WASHER, FLYWHEEL NUT |
| 4 | 11-20696 | | 1 | NUT, FLYWHEEL |
| 5 | 339-5748A2 | | 2 | COIL ASSEMBLY, IGNITION |
| 6 | 13-26996 | | 4 | LOCKWASHER, IGNITION COIL TERMINAL |
| 7 | 11-45076 | | 4 | NUT, IGNITION COIL TERMINAL |
| 8 | 66355 | | 2 | COVER, IGNITION COIL |
| 9 | 10-72074 | | 3 | SCREW, COIL COVER TO REAR SUPPORT BRACKET (4 5/8") |
| 10 | 11-20110 | | 3 | NUT, COIL COVER SCREW |
| 11 | 84-63212A2 | | 2 | LEAD ASSEMBLY, HIGH TENSION |
| 12 | 332-2854 | | 2 | NIPPLE, IGNITION COIL |
| 13 | 85-71006A1 | | 2 | PROTECTOR ASSEMBLY, SPARK PLUG |
| 14 | 33-58194 | | 2 | SPARK PLUG (AC#V40FFK) BELGIUM AND CANADA USE C-33-75739 SPARK PLUG. |

BELGIUM AND CANAGA: USE C-[33-75739] SPARK PLUG

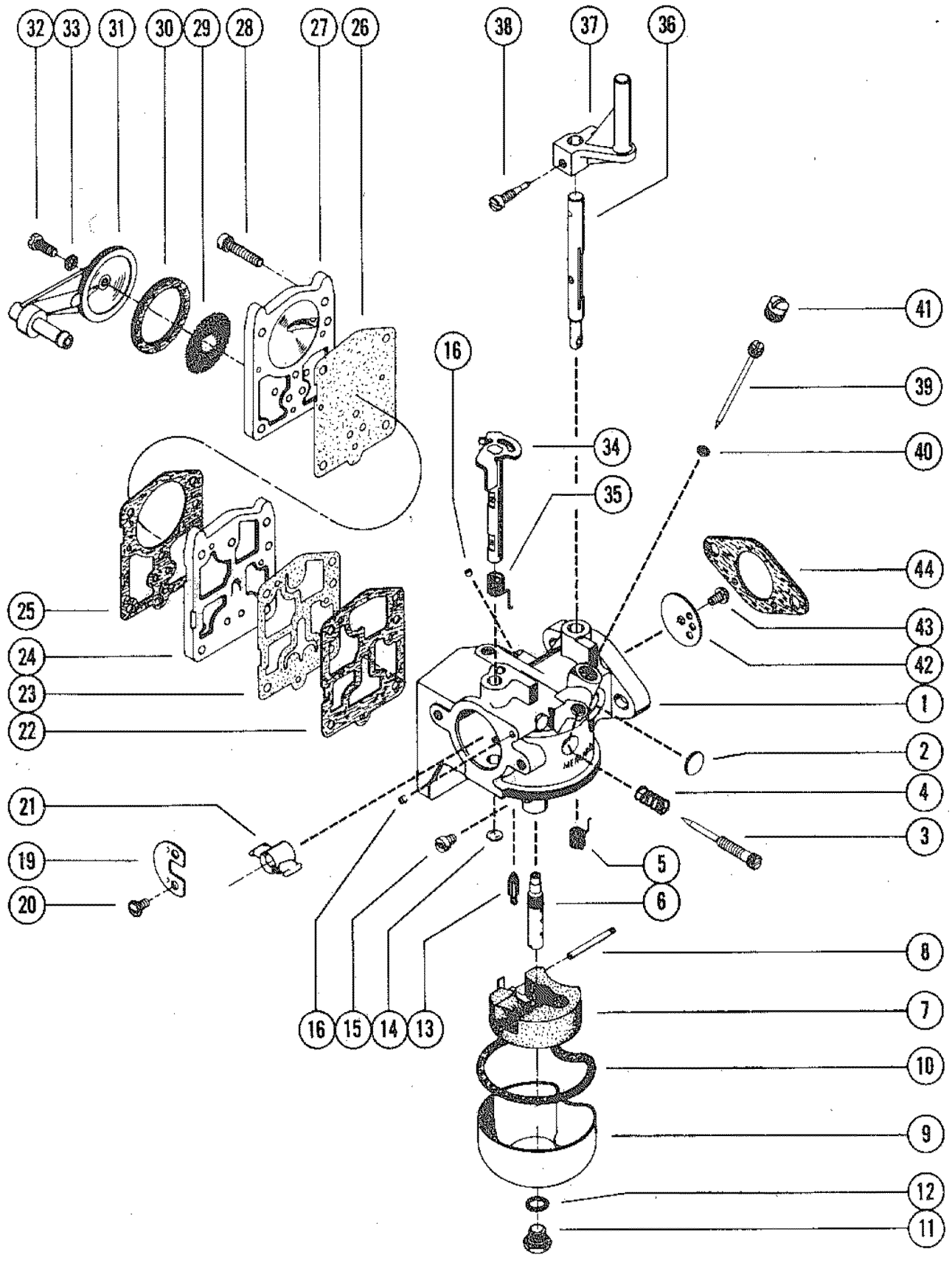
IGNITION COMPONENTS



IGNITION COMPONENTS

| REF. NO. | PART NO. | SYM. | QTY. | DESCRIPTION |
|----------|------------|------|------|---|
| 1 | 339-5209A3 | | 1 | STATOR ASSEMBLY |
| 2 | 10-66707 | | 3 | SCREW, STATOR TO END CAP (7/8") |
| 3 | 10-35400 | | 1 | SCREW, STATOR TO END CAP (3/8") |
| 4 | 339-6119A1 | | 1 | COIL ASSEMBLY (5 1/2" AND 6 3/8" LEADS) |
| | 339-6120A1 | | 1 | COIL ASSEMBLY (1 3/4" AND 3 1/2" LEADS) |
| 5 | 54-59538 | | 2 | CLIP, COIL RETAINING |
| 6 | 54-65927 | | 2 | CLIP, COIL RETAINING |
| 7 | 86-74474 | | 1 | TERMINAL BLOCK, STATOR |
| 8 | 10-20646 | | 1 | SCREW, TERMINAL BLOCK TO STATOR (5/8") |
| 9 | 11-46438 | | 1 | NUT, TERMINAL BLOCK SCREW |
| 10 | 10-22654 | | 1 | SCREW, LEADS TO TERMINAL BLOCK (3/8") |
| 11 | 338-5286A6 | | 1 | TRIGGER HOUSING ASSEMBLY |
| 14 | 66371 | | 1 | LINK, TRIGGER HOUSING TO THROTTLE LEVER |
| 15 | 11-65110 | | 1 | NUT, PUSH - LINK TO TRIGGER HOUSING |
| 16 | 339-5287A4 | | 1 | SWITCH BOX |
| 17 | 10-69022 | | 2 | SCREW, SWITCH ATTACHING (1/2") |
| 18 | 12-56681 | | 2 | WASHER, SWITCH BOX ATTACHING SCREW |
| 19 | 61990 | | 5 | STA-STRAP |
| 20 | 10-45218 | | 1 | SCREW, GROUND LEAD TO CYLINDER BLOCK |

CARBURETOR ASSEMBLY, COMPLETE



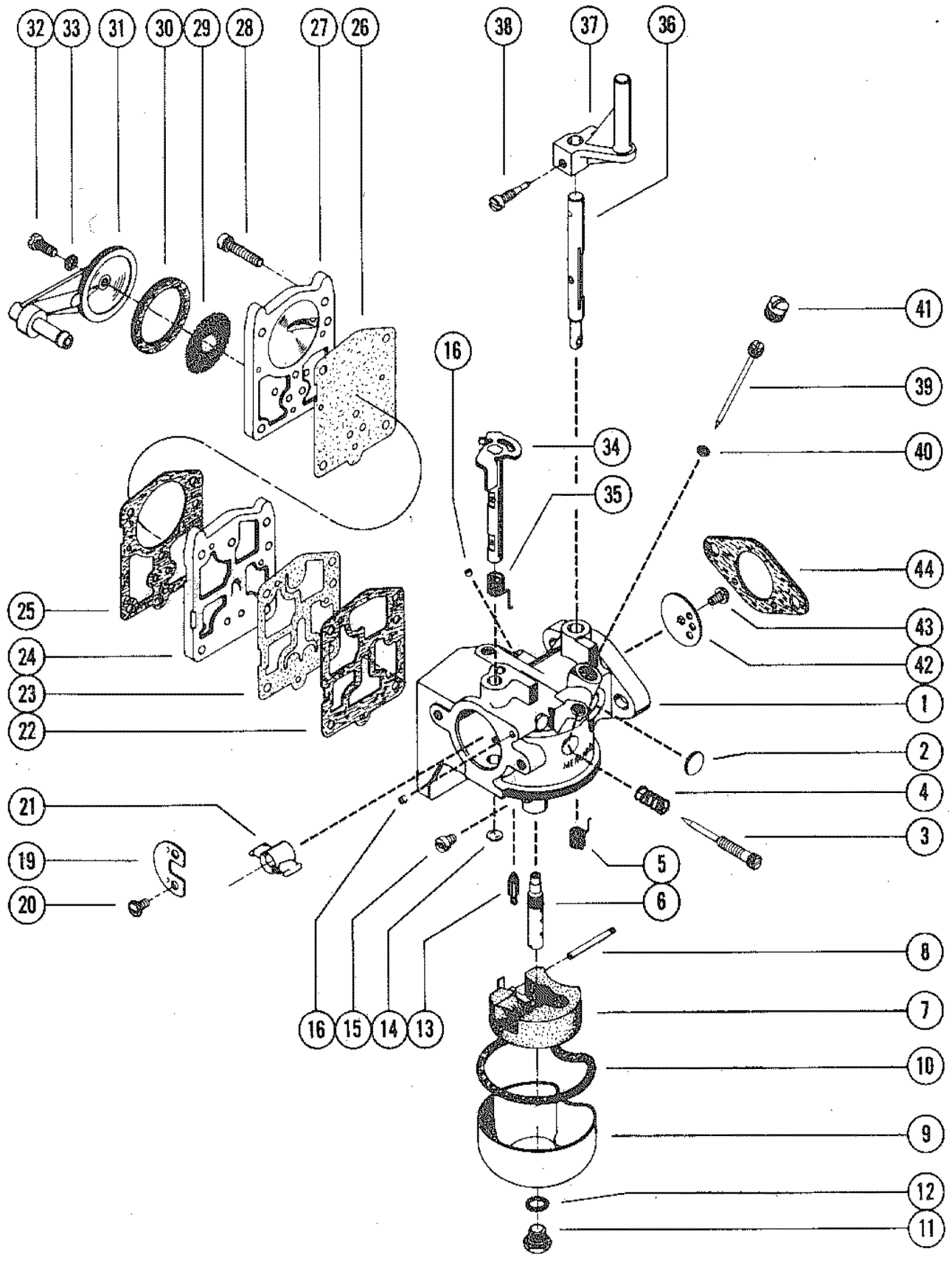
CARBURETOR ASSEMBLY, COMPLETE

| REF. NO. | PART NO. | SYM. | QTY. | DESCRIPTION |
|----------|-----------|------|------|-------------------------------------|
| 1 | 1364-6648 | | 1 | CARBURETOR ASSEMBLY, COMPLETE |
| 2 | | ■ | 1 | WELCH PLUG, BODY CHANNEL (LARGE) |
| 3 | | ■ | 1 | SCREW, IDLE MIXTURE |
| 4 | | ■ | 1 | SPRING, IDLE MIXTURE SCREW |
| 5 | | ■ | 1 | SPRING, RETURN - THROTTLE SHAFT |
| 6 | | ■ | 1 | MAIN NOZZLE |
| 7 | 1399-5126 | | 1 | FLOAT |
| 8 | | ■ | 1 | PIN, FLOAT |
| 9 | 1399-5127 | | 1 | FUEL BOWL |
| 10 | | ◇■ | 1 | GASKET, FUEL BOWL |
| 11 | 1399-5128 | | 1 | SCREW, FUEL BOWL TO CARBURETOR |
| 12 | | ◇■ | 2 | GASKET, FUEL BOWL SCREW |
| 13 | 1399-6141 | ■ | 1 | INLET NEEDLE AND SPRING |
| 14 | | ■ | 1 | WELCH PLUG, BODY CHANNEL (SMALL) |
| 15 | 1399-1896 | ■ | 1 | JET, MAIN FUEL (.041) |
| 16 | | ■ | 2 | PLUG, BODY CHANNEL |
| 19 | 1399-7274 | | 1 | CHOKE SHUTTER |
| 20 | 10-23035 | | 2 | SCREW, CHOKE SHUTTER TO CHOKE SHAFT |
| 21 | 69764 | | 1 | VENTURI |
| 22 | | ◇■+ | 1 | GASKET, FUEL PUMP DIAPHRAGM |
| 23 | | ■+ | 1 | DIAPHRAGM, FUEL PUMP |
| 24 | 1399-5129 | | 1 | BODY FUEL PUMP |
| 25 | | ◇■+ | 1 | GASKET, FUEL PUMP DIAPHRAGM |
| 26 | | ■+ | 1 | DIAPHRAGM, FUEL PUMP |
| 27 | 1399-5131 | | 1 | BODY, STRAINER |
| 28 | 1399-5132 | | 4 | SCREW, STRAINER BODY TO CARBURETOR |
| 29 | 1399-5758 | ■ | 1 | SCREEN, STRAINER |
| 30 | | ◇■ | 1 | GASKET, STRAINER COVER |
| 31 | 1399-4236 | | 1 | COVER ASSEMBLY, STRAINER (INLET) |
| 32 | | ■ | 1 | SCREW, STRAINER COVER TO BODY |
| 33 | | ◇■ | 1 | GASKET, STRAINER COVER TO SCREW |
| 34 | 1399-5827 | | 1 | CHOKE SHAFT |
| 35 | | ■ | 1 | SPRING, RETURN - CHOKE SHAFT |
| 36 | 1399-5133 | | 1 | THROTTLE SHAFT |
| 37 | 63646 | | 1 | LEVER, THROTTLE |
| 38 | 10-20847 | | 1 | SCREW, THROTTLE LEVER ATTACHING |
| 39 | | ■ | 1 | IDLE TUBE |
| 40 | | ◇■ | 1 | GASKET, IDLE TUBE |
| 41 | 10-23178 | | 1 | SCREW, PLUG - IDLE TUBE |
| 42 | 1399-5759 | | 1 | THROTTLE SHUTTER |

- = COMPONENT OF REPAIR PARTS KIT.
 ◇ = COMPONENT OF GASKET AND PACKING SET.
 + = COMPONENT OF DIAPHRAGM AND GASKET KIT.

CONTINUED ON NEXT PAGE ➡

CARBURETOR ASSEMBLY, COMPLETE

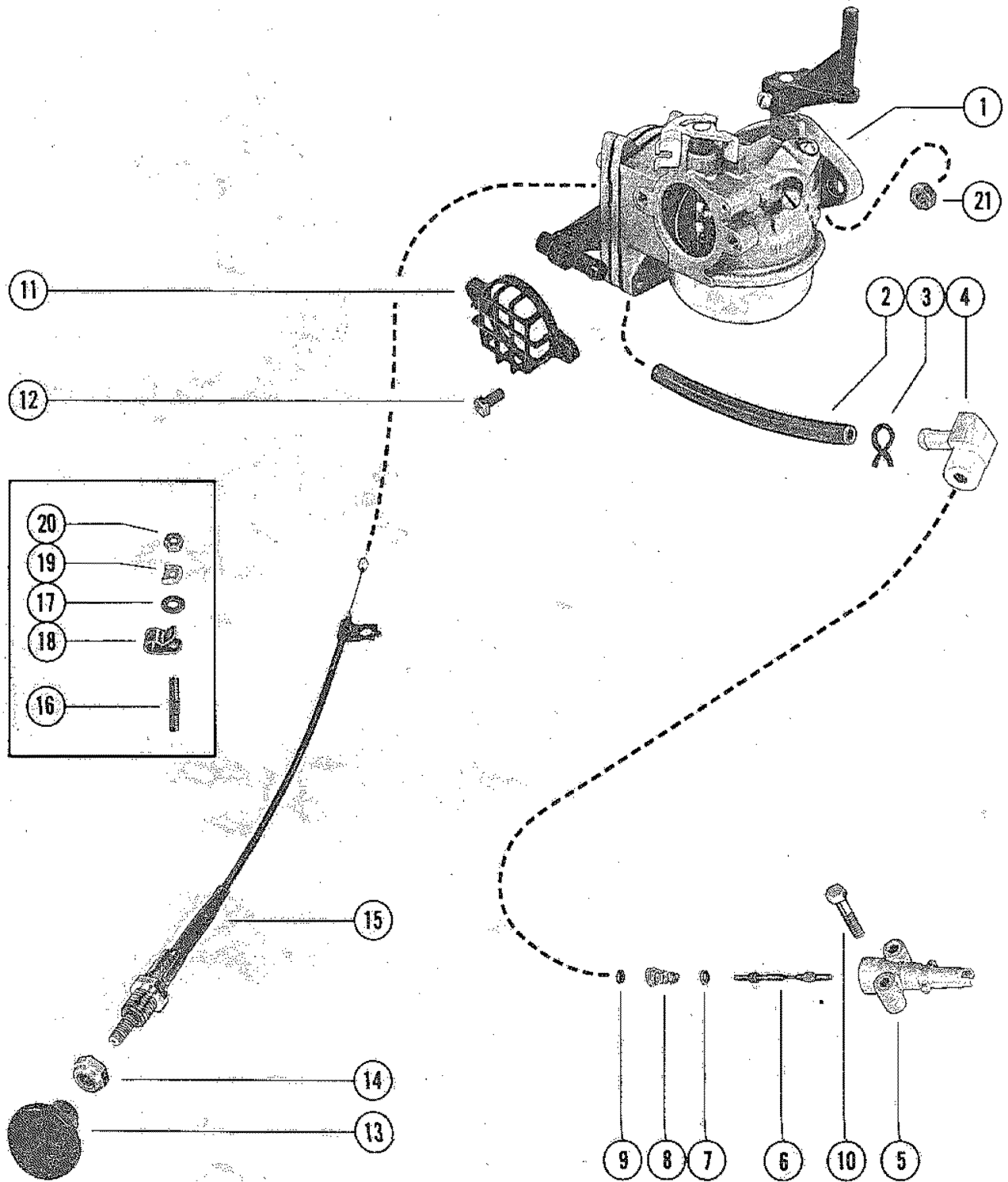


CARBURETOR ASSEMBLY, COMPLETE

| REF. NO. | PART NO. | SYM. | QTY. | DESCRIPTION |
|----------|------------------|------|------|---|
| 43 | | ■ | 2 | SCREW, THROTTLE SHUTTER TO THROTTLE SHAFT |
| 44 | 27-63309 | ■ | 1 | GASKET, CARBURETOR FLANGE |
| - | 1399-5135 | ■ | 1 | GASKET SET |
| - | 1399-5800 | | 1 | REPAIR PARTS KIT |
| - | 1399-5137 | | 1 | DIAPHRAGM AND GASKET KIT |

■ = COMPONENT OF REPAIR PARTS KIT.

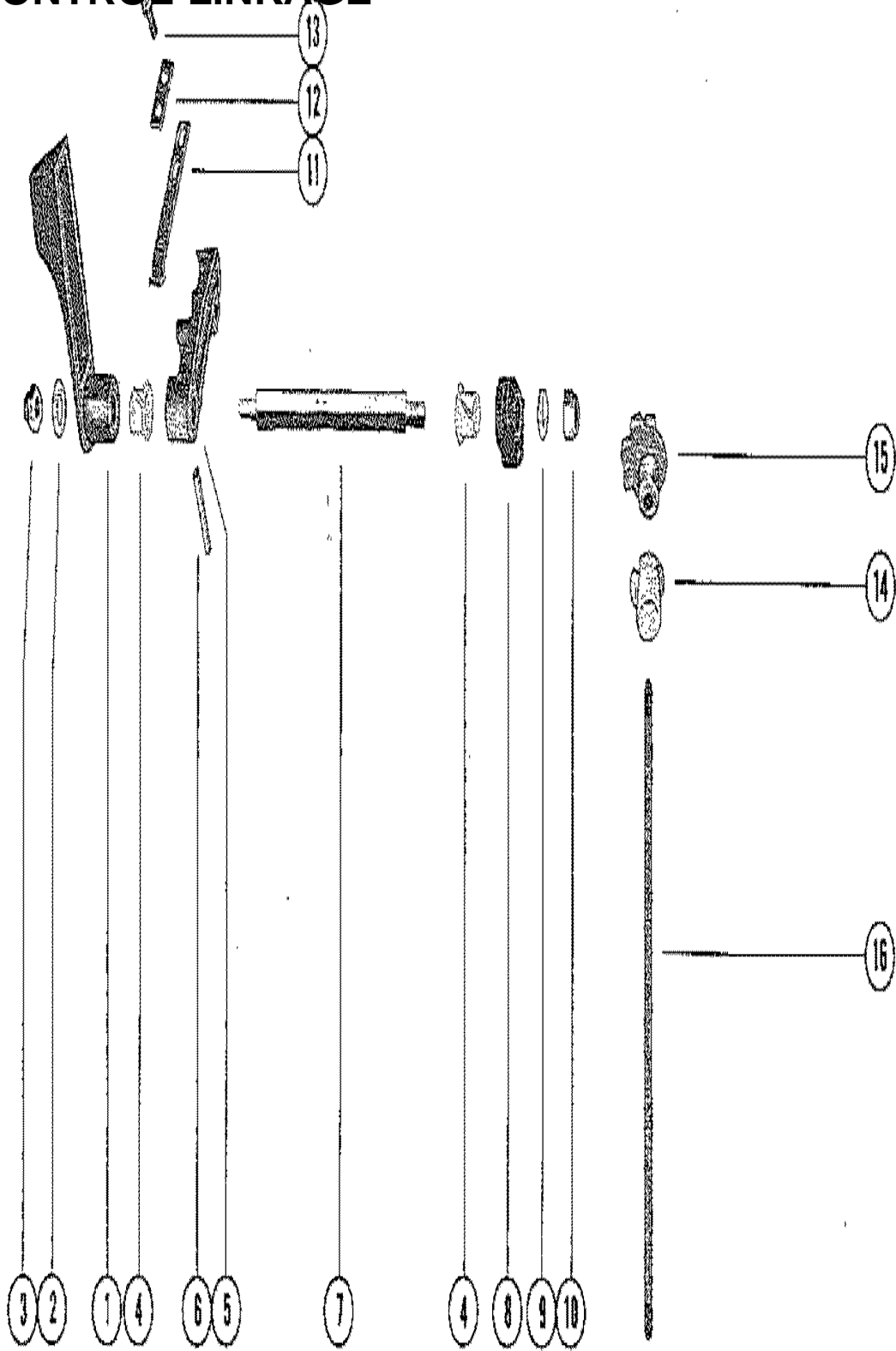
CARBURETOR AND CHOKE ASSEMBLY



CARBURETOR AND CHOKE ASSEMBLY

| REF. NO. | PART NO. | SYM. | QTY. | DESCRIPTION |
|----------|-----------|------|------|--|
| 1 | 1364-6648 | | 1 | CARBURETOR ASSEMBLY, COMPLETE |
| 2 | 32-70432 | | 1 | FUEL LINE, ADAPTOR TO CARBURETOR |
| 3 | 54-68424 | | 2 | CLAMP, FUEL LINE ATTACHING |
| 4 | 22-73705 | | 1 | FITTING, FUEL LINE TO ADAPTOR |
| 5 | 22833 | | 1 | ADAPTOR, CHECK UNIT (FUEL LINE) |
| 6 | 23069 | | 1 | STEM, CHECK UNIT ADAPTOR |
| 7 | 25-20415 | | 1 | "O" RING, ADAPTOR STEM |
| 8 | 24-23067 | | 1 | SPRING, ADAPTOR STEM |
| 9 | 30188 | | 1 | CUP WASHER, ADAPTOR |
| 10 | 10-37923 | | 1 | SCREW, ADAPTOR TO BOTTOM COWL (1 1/4") |
| 11 | 65552 | | 1 | SCREEN, CARBURETOR |
| 12 | 10-69022 | | 2 | SCREW, SCREEN TO CARBURETOR |
| 13 | 63980 | | 1 | KNOB, CHOKE |
| 14 | 11-73710 | | 1 | NUT, CHOKE CABLE TO BOTTOM COWL |
| 15 | 72465 | | 1 | CABLE, CHOKE |
| 16 | 16-69036 | | 1 | STUD, CHOKE CABLE TO CARBURETOR |
| 17 | 12-56681 | | 1 | WASHER, CHOKE CABLE STUD |
| 18 | 54-23568 | | 1 | CLIP, TRIGGER LEADS |
| 19 | 69205 | | 1 | "D" WASHER, TRIGGER LEAD CLIP |
| 20 | 11-45076 | | 1 | NUT, CHOKE CABLE STUD |
| 21 | 11-46887 | | 2 | NUT, CARBURETOR ATTACHING |

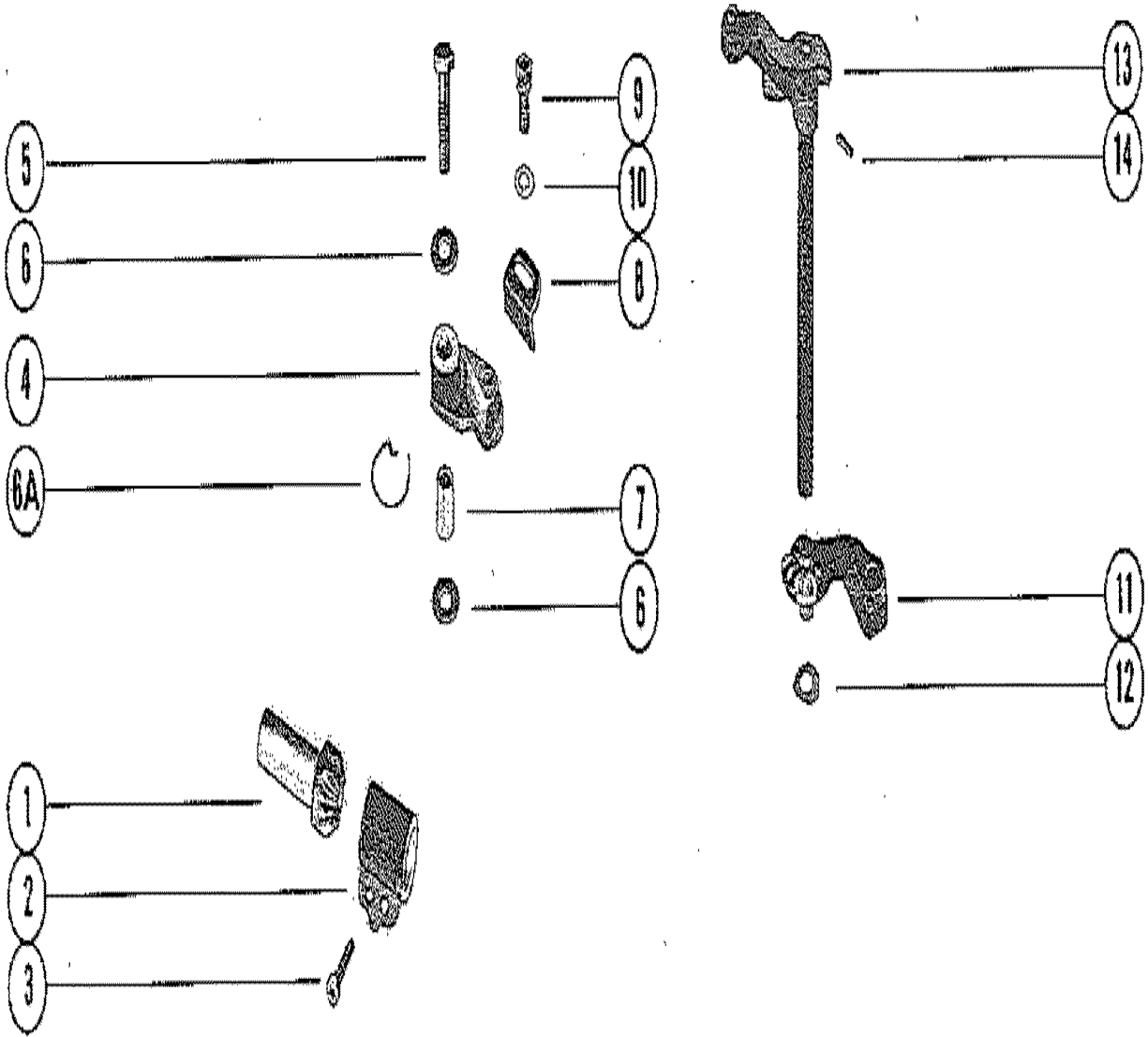
SHIFT CONTROL LINKAGE



SHIFT CONTROL LINKAGE

| REF. NO. | PART NO. | SYM. | QTY. | DESCRIPTION |
|----------|----------|------|------|--|
| 1 | 66376 | | 1 | HANDLE, SHIFT CONTROL (MANUAL) |
| | 74352 | | 1 | HANDLE, SHIFT CONTROL (ELECTRIC) |
| 2 | 12-29245 | | 1 | WASHER, SHIFT CONTROL SHAFT |
| 3 | 11-39305 | | 1 | NUT, SHIFT HANDLE TO SHIFT CONTROL SHAFT |
| 4 | 23-66375 | | 2 | BUSHING, NYLON - SHIFT CONTROL SHAFT |
| 5 | 74350 | | 1 | LEVER, SHIFT CONTROL (REMOTE) |
| 6 | 17-25905 | | 1 | PIN, SHIFT LEVER TO SHIFT CONTROL SHAFT |
| 7 | 66379 | | 1 | SHAFT, SHIFT CONTROL |
| 8 | 43-66377 | | 1 | GEAR, SECTOR - SHIFT CONTROL SHAFT (HORIZONTAL) |
| 9 | 12-29245 | | 1 | WASHER, SHIFT CONTROL SHAFT |
| 10 | 11-20361 | | 1 | NUT, SECTOR GEAR TO SHIFT CONTROL SHAFT |
| 11 | 24-39627 | | 1 | SPRING, DETENT - SHIFT CONTROL LEVER |
| 12 | 39601 | | 1 | PLATE, DETENT SPRING |
| 13 | 10-25764 | | 2 | SCREW, PLATE AND SPRING TO ADAPTOR PLATE (1/2") |
| 14 | 23-27132 | | 1 | BUSHING, NYLON - UPPER SHIFT SHAFT |
| 15 | 43-60653 | | 1 | GEAR, SECTOR - SHIFT SHAFT |
| 16 | 71660 | | 1 | SHIFT SHAFT |

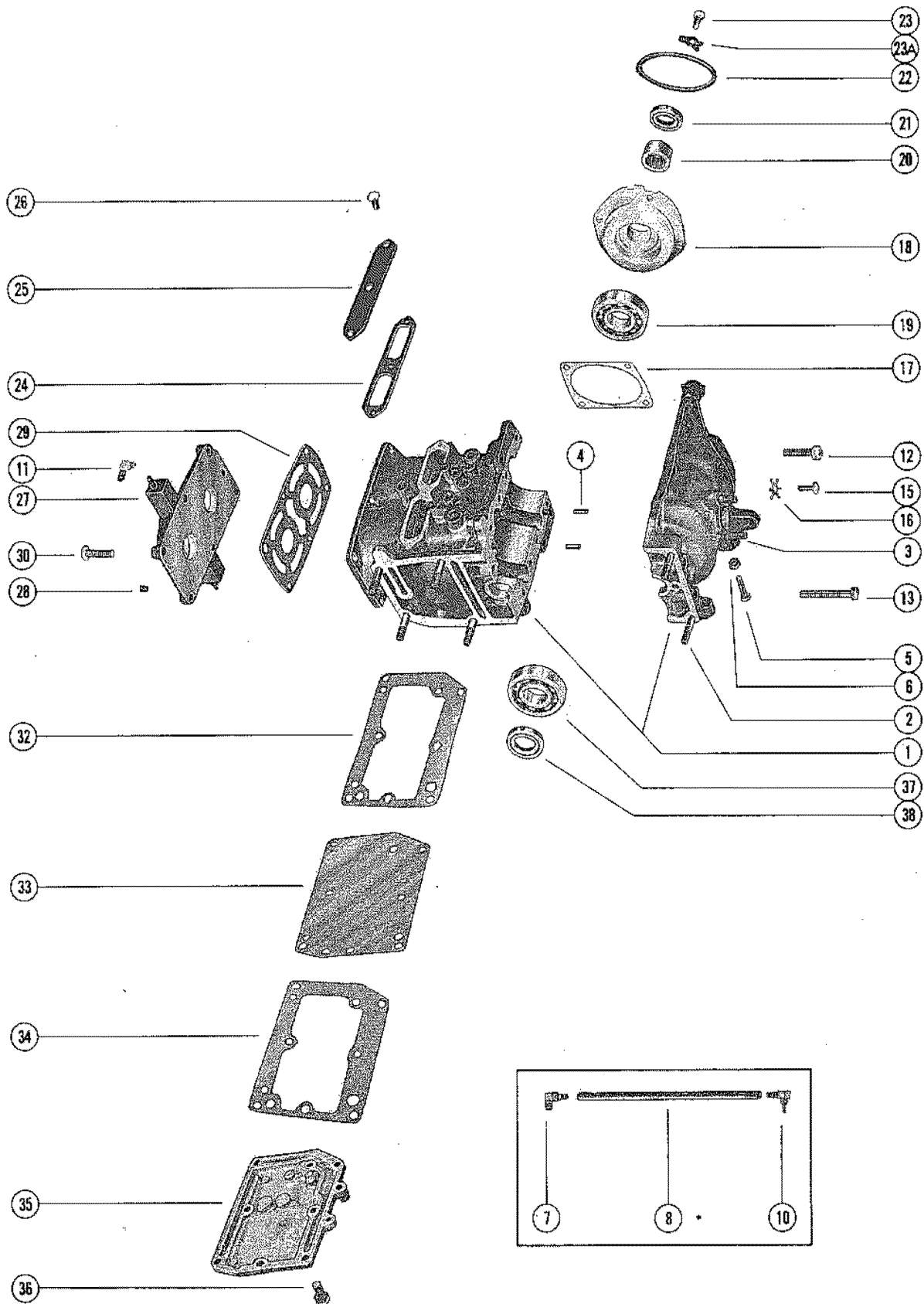
THROTTLE CONTROL LINKAGE



THROTTLE CONTROL LINKAGE

| REF. NO. | PART NO. | SYM. | QTY. | DESCRIPTION |
|----------|------------|------|------|---|
| 1 | 43-60856 | | 1 | GEAR, HORIZONTAL - THROTTLE CONTROL SOCKET |
| 2 | 60885 | | 1 | HOUSING, THROTTLE CONTROL |
| 3 | 10-73643 | | 2 | SCREW, THROTTLE CONTROL HOUSING TO BOTTOM COWL (3/4") |
| 4 | 63308A1 | | 1 | FOLLOWER ASSEMBLY, NUETRAL SPEED LIMITER |
| 5 | 10-20653 | | 1 | SCREW, LIMITER FOLLOWER TO BOTTOM COWL (1 1/8") |
| 6 | 12-38753 | | 2 | WASHER, SPEED LIMITER FOLLOWER SCREW |
| 6A | 24-39042 | | 1 | SPRING, NEUTRAL SPEED LIMITER FOLLOWER |
| 7 | 23-63320 | | 1 | BUSHING, SPEED LIMITER FOLLOWER SCREW |
| 8 | 36017 | | 1 | STOP, NEUTRAL SPEED LIMITER |
| 9 | 10-28710 | | 1 | SCREW, NUETRAL SPEED LIMITER STOP TO FOLLOWER (5/8") |
| 10 | 12-24676 | | 1 | WASHER, NEUTRAL SPEED LIMITER STOP SCREW |
| 11 | 43-60858 | | 1 | GEAR, THROTTLE CONTROL |
| 12 | 15-64653A1 | | AR | SHIM ASSEMBLY, GEAR AND SHAFT (LOWER) |
| 13 | 66374A2 | | 1 | LEVER ASSEMBLY, THROTTLE CONTROL |
| 14 | 17-76207 | | 1 | PIN, ROLL THROTTLE CONTROL LEVER TO CONTROL SHAFT |

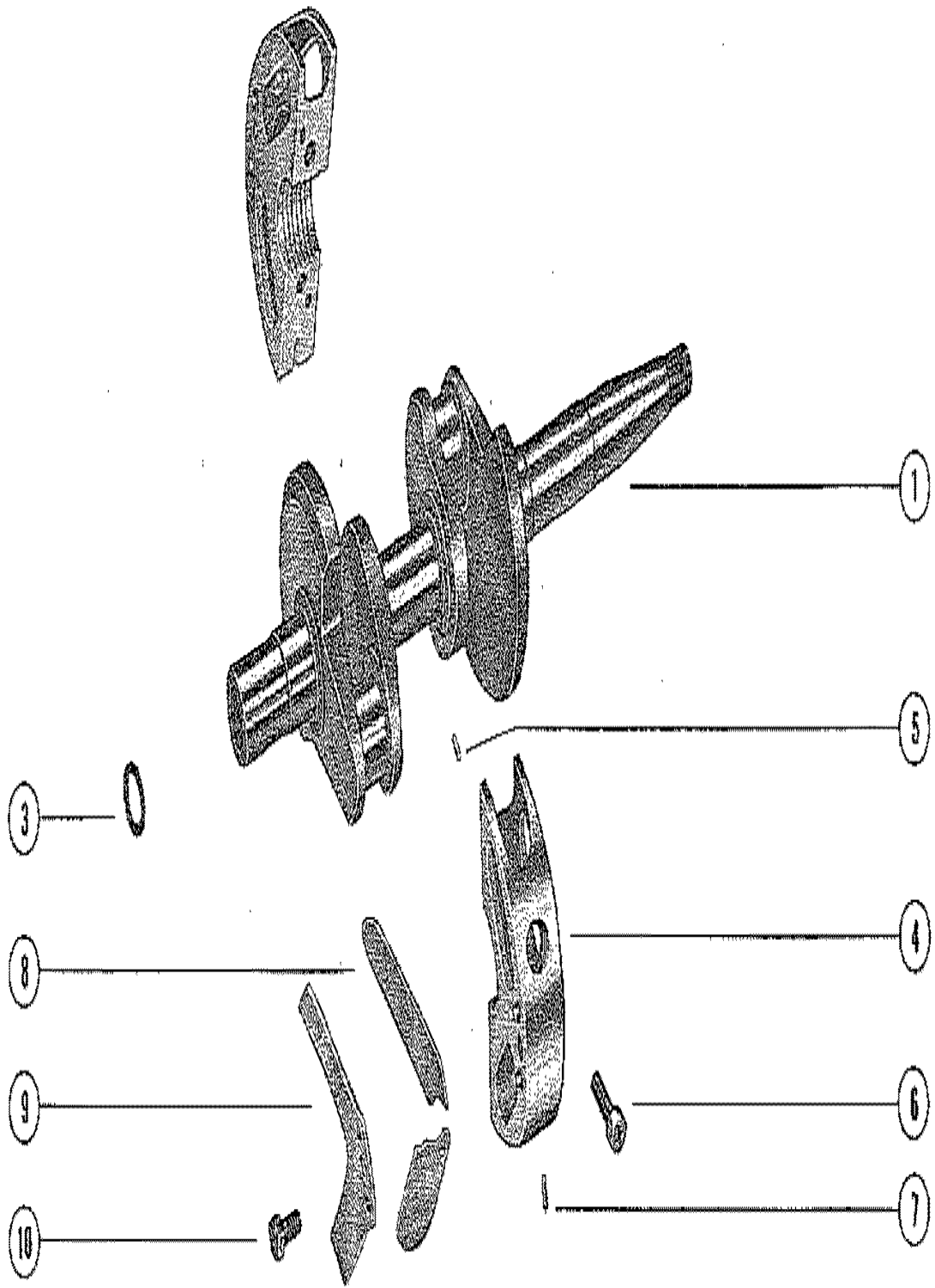
CYLINDER BLOCK AND CRANKCASE ASSEMBLY



CYLINDER BLOCK AND CRANKCASE ASSEMBLY

| REF. NO. | PART NO. | SYM. | QTY. | DESCRIPTION |
|----------|-------------|------|------|---|
| 1 | 837-6543A5 | | 1 | CYLINDER BLOCK AND CRANKCASE ASS'Y |
| 2 | 16-72809 | | 6 | STUD, BLOCK AND CRANKCASE TO DRIVE SHAFT HOUSING |
| 3 | 16-66357 | | 2 | STUD, CARBURETOR MOUNTING |
| 4 | 17-46912 | | 2 | PIN, DOWEL - CRANKCASE TO CYLINDER BLOCK |
| 5 | 10-54467 | | 2 | SCREW, ADJ. - THROTTLE CONTROL (1 1/4") |
| 6 | 11-68219 | | 2 | NUT, THROTTLE CONTROL ADJUSTING SCREW |
| 7 | 22-65857 | | 1 | FITTING, BLEED DRAIN - CYLINDER BLOCK (TOP) |
| 8 | 32-54936 | | 1 | HOSE, BLEED DRAIN (10 1/2") |
| 10 | 21-77207 | | 1 | CHECK VALVE, BLEED - CRANKCASE (BOTTOM) |
| 11 | 22-25885 | | 1 | ELBOW, TELL TALE - CYLINDER BLOCK |
| 12 | 10-76621 | | 8 | SCREW, CRANKCASE TO CYLINDER BLOCK |
| 13 | 10-73280 | | 2 | SCREW, CRANKCASE TO CYLINDER BLOCK (1 1/2") |
| 15 | 10-26801 | | 1 | SCREW, MAIN BEARING LOCKING (5/8") |
| 16 | 14-20091 | | 1 | TAB WASHER, MAIN BEARING LOCKING SCREW |
| 17 | 15-31412A1 | | AR | SHIM, UPPER HOUSING TO CYLINDER BLOCK (.002-3-5-10) |
| 18 | 1164-6413A1 | | 1 | BEARING HOUSING ASSEMBLY, UPPER |
| 19 | 30-20861 | | 1 | BEARING, BALL - UPPER BEARING HOUSING |
| 20 | 31-31410 | | 1 | BEARING, ROLLER - UPPER BEARING HOUSING |
| 21 | 26-66301 | | 1 | OIL SEAL, UPPER BEARING HOUSING |
| 22 | 25-20863 | | 1 | "O" RING, UPPER BEARING HOUSING |
| 23 | 10-76611 | | 4 | SCREW, UPPER BEARING HOUSING (1/2") |
| 23A | 14-78102 | | 4 | TAB WASHER, UPPER BEARING HOUSING SCREW |
| 24 | 27-78032 | | 1 | GASKET, INTAKE COVER |
| 25 | 78033 | | 1 | COVER, INTAKE |
| 26 | 10-26537 | | 3 | SCREW, INTAKE COVER TO CYLINDER BLOCK |
| 27 | 1019-5314A1 | | 1 | COVER ASSEMBLY, CYLINDER BLOCK |
| 28 | 22-52644 | | 1 | PLUG, CYLINDER BLOCK COVER |
| 29 | 27-78087 | | 1 | GASKET, CYLINDER BLOCK COVER |
| 30 | 10-76630 | | 6 | SCREW, CYL. BLOCK COVER TO CYLINDER BLOCK (1") |
| 32 | 78035 | | 1 | GASKET, CYLINDER BLOCK TO BAFFLE PLATE |
| 33 | 78034 | | 1 | PLATE, BAFFLE - EXHAUST MANIFOLD |
| 34 | 27-78035 | | 1 | GASKET, BAFFLE PLATE |
| 35 | 74919 | | 1 | COVER, EXHAUST MANIFOLD |
| 36 | 10-28668 | | 8 | SCREW, BAFFLE PLATE AND MANIFOLD CAVER MOUNTING (3/4") |
| 37 | 30-20861 | | 1 | BEARING, BALL - CRANKCASE (LOWER) |
| 38 | 26-66301 | | 1 | OIL SEAL, CRANKCASE (LOWER) |

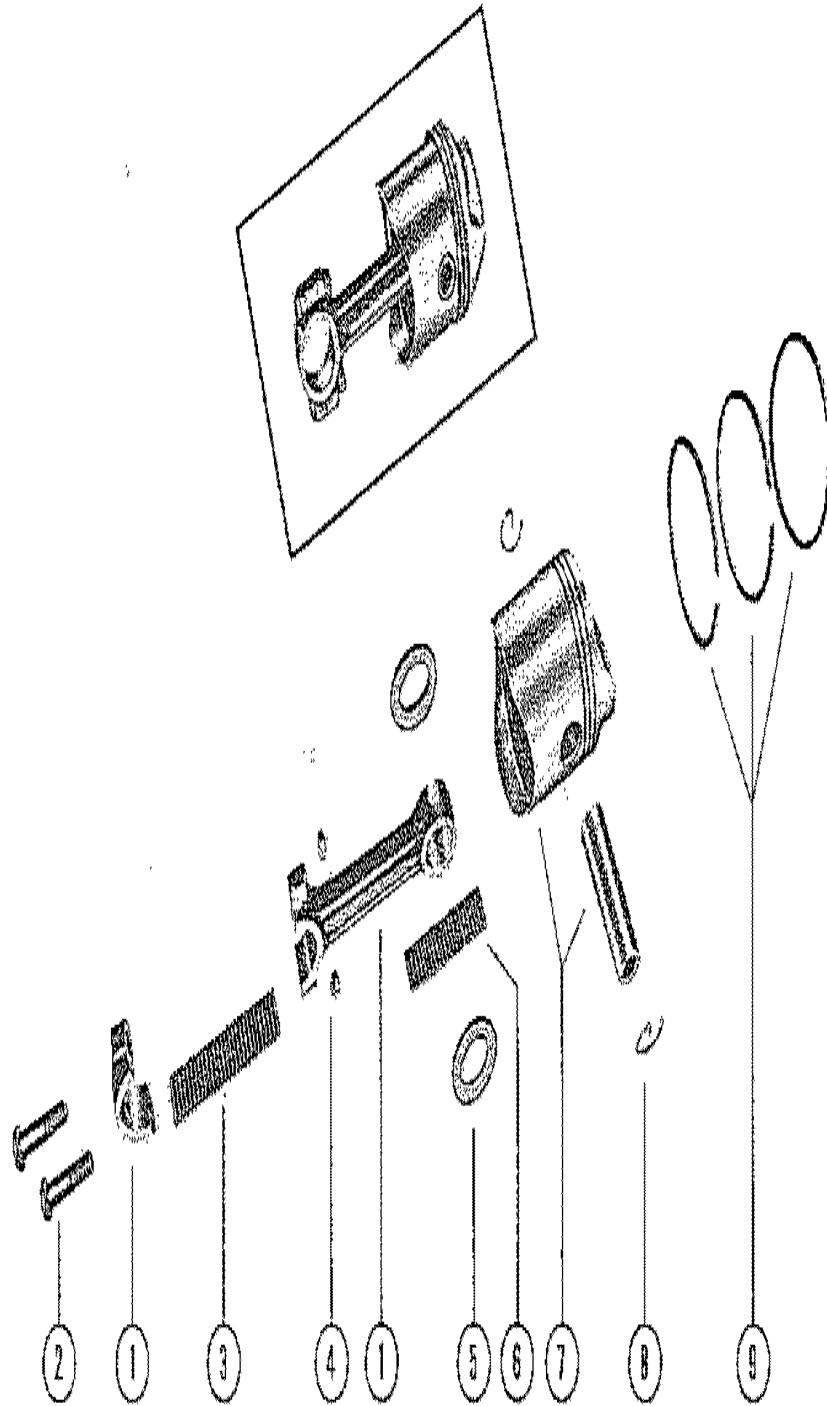
CRANKSHAFT AND MAIN BEARING ASSEMBLY



CRANKSHAFT AND MAIN BEARING ASSEMBLY

| REF. NO. | PART NO. | SYM. | QTY. | DESCRIPTION |
|----------|------------|------|------|-------------------------------------|
| 1 | 421-5275 | | 1 | CRANKSHAFT |
| 3 | 26-72793 | | 1 | SEAL, CRANKSHAFT |
| 4 | 532-1938A6 | | 1 | MAIN BEARING ASSEMBLY (VALVE TYPE) |
| 5 | 17-20032 | | 2 | PIN, DOWEL- MAIN BEARING |
| | 17-65855 | | 8 | PIN, DOWEL- REED LOCATING |
| 6 | 10-56781 | | 2 | SCREW, MAIN BEARING CLAMPING |
| 7 | 17-20032 | | 1 | PIN, DOWEL - MAIN BEARING TO BLOCK |
| 8 | 34-31942A1 | | 1 | REED SET, MATCHED- MAIN BEARING |
| 9 | 34-20053 | | 4 | REED STOP, MAIN BEARING REED VALVES |
| 10 | 10-27304 | | 4 | SCREW, REED STOP MOUNTING |

PISTON AND CONNECTING ROD ASSEMBLY

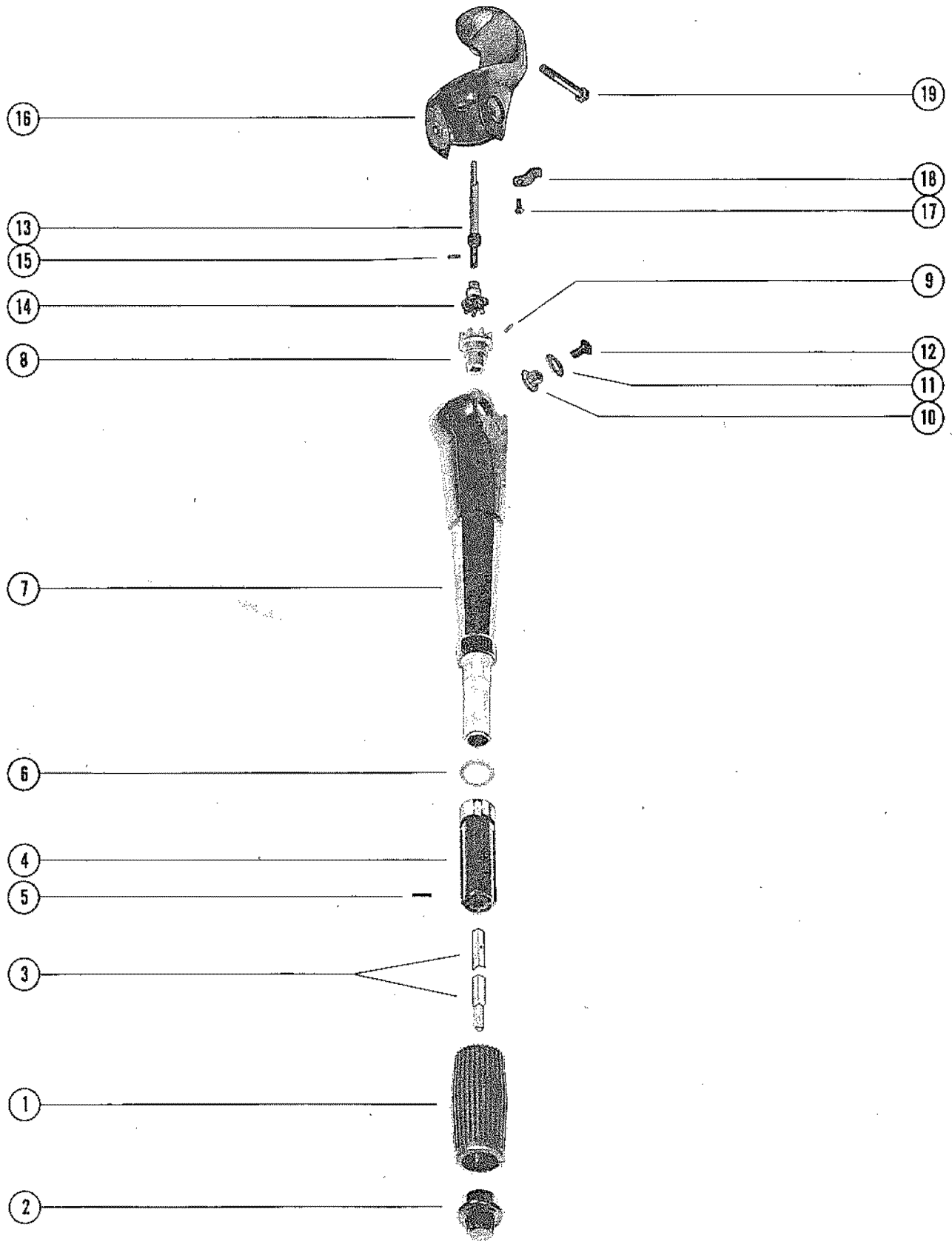


PISTON AND CONNECTING ROD ASSEMBLY

| REF. NO. | PART NO. | SYM. | QTY. | DESCRIPTION |
|-------------|-------------|------|------|----------------------------------|
| 1 | 608-4246A1 | | 2 | CONNECTING ROD ASSEMBLY |
| 2 | 10-39154 | | 4 | SCREW, CONNECTING ROD |
| 3 | 29-26815 | | 58 | BEARING, NEEDLE - CRANKPIN |
| 4 | 11-20061 | | 4 | NUT, CONNECTING ROD SCREW |
| 5 | 12-65967 | | 4 | WASHER, NEEDLE BEARING RETAINING |
| 6 | 29-31505 | | 40 | BEARING, NEEDLE - PISTON PIN |
| 7 | 719-3374A2 | | 2 | PISTON AND PISTON PIN ASSEMBLY |
| 8 | 40-21666 | | 4 | LOCK RING, PISTON PIN |
| 9 | 39-21665A12 | | 1 | RING, PISTON |

FOR REPLACEMENT OF POWERHEAD ASSEMBLY, COMPLETE, WICH INCLUDES CYLINDER BLOCK AND CRANKCASE, PISTONS, CONNECTING RODS AND BEARINGS, ETC., ORDER THE PART NUMBER: POWER HEAD ASSEMBLY [A-75380A78]

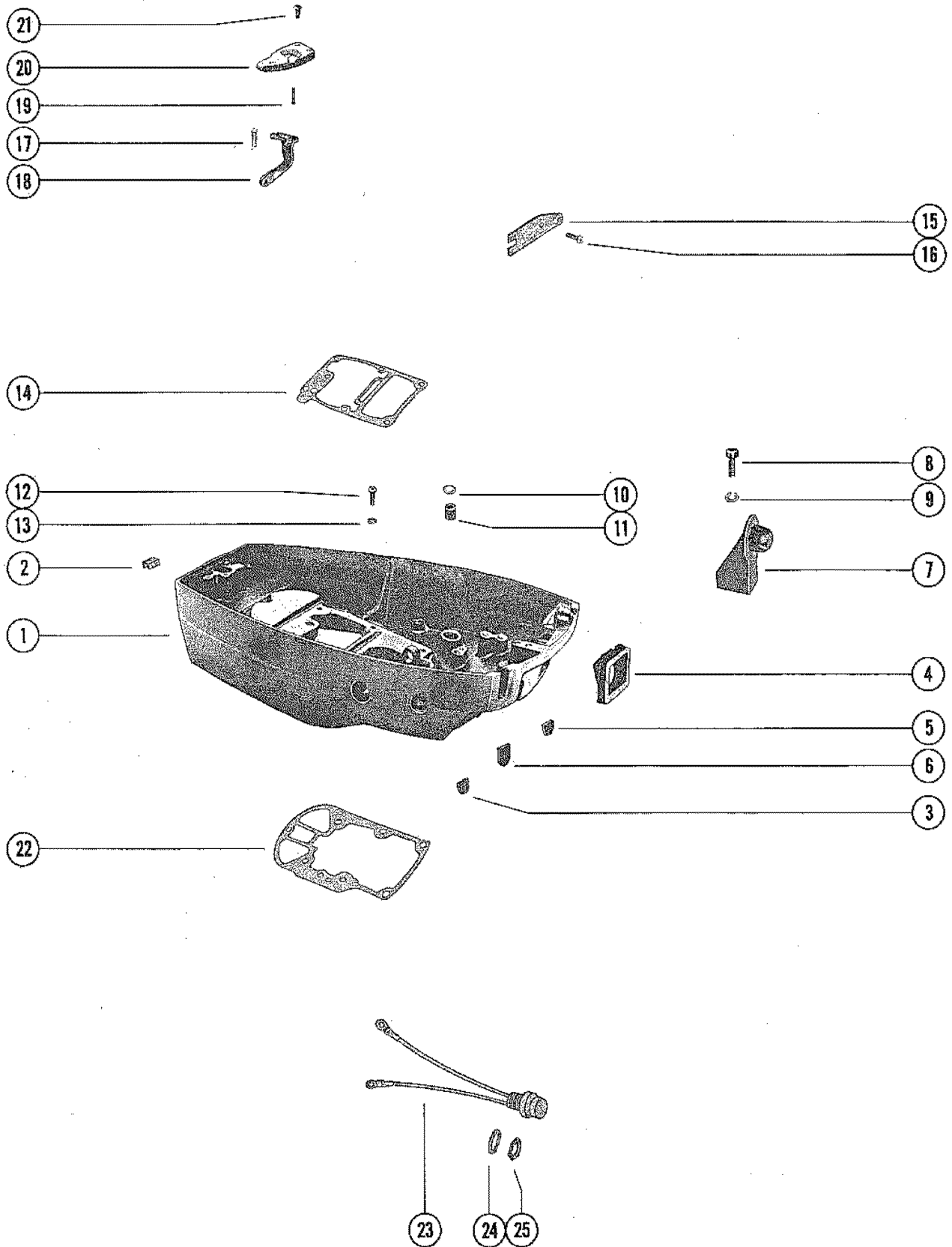
STEERING HANDLE ASSEMBLY



STEERING HANDLE ASSEMBLY

| REF. NO. | PART NO. | SYM. | QTY. | DESCRIPTION |
|----------|-------------|------|------|---|
| - | 60850A6 | | 1 | STEERING HANDLE ASEMBLY, COMPLETE |
| 1 | 60854 | | 1 | GRIP, HANDLE |
| 2 | 62251 | | 1 | CAP,HANDLE |
| 3 | 66393 | | 1 | SHAFT, THROTTLE |
| 4 | 66394A1 | | 1 | HANDLE, THROTTLE SHAFT |
| 5 | 17-46152 | | 1 | PIN, STEERING HANDLE |
| 6 | 12-62252 | | 1 | WASHER, THROTTLE HANDLE TO STEERING ARM |
| 7 | 60850 | | 1 | ARM, STEERING HANDLE |
| 8 | 43-60852 | | 1 | GEAR, BALL-THROTTLE SHAFT |
| 9 | 17-27088 | | 1 | PIN, BALL GEAR TO THROTTLE SHAFT |
| 10 | 48003 | | 2 | PIVOT,STEERING HANDLE TO BRACKET |
| 11 | 15-48002015 | | AR | SHIM, STEERING HANDLE PIVOT TO BRACKET (.015) |
| 12 | 10-64074 | | 2 | SCREW, STEERING HANDLE TO ARM BRACKET (5/8") |
| 13 | 60857A2 | | 1 | UNIVERSAL JOINT ASSEMBLY |
| 14 | 43-60852 | | 1 | GEAR, BALL-UNIVERSAL JOINT |
| 15 | 17-77564 | | 1 | PIN, BALL GEAR TO UNIVERSAL JOINT |
| 16 | 68768A2 | | 1 | BRACKET ASSEMBLY, STEERING ARM |
| 17 | 10-62233 | | 2 | SCREW, DETENT SPRING TO STEERING ARM BRACKET (5/8") |
| 18 | 24-72847 | | 2 | SPRING, DETENT-STEERING HANDLE |
| 19 | 10-78038 | | 3 | SCREW, STEERING ARM BRACKET TO SADDLE |

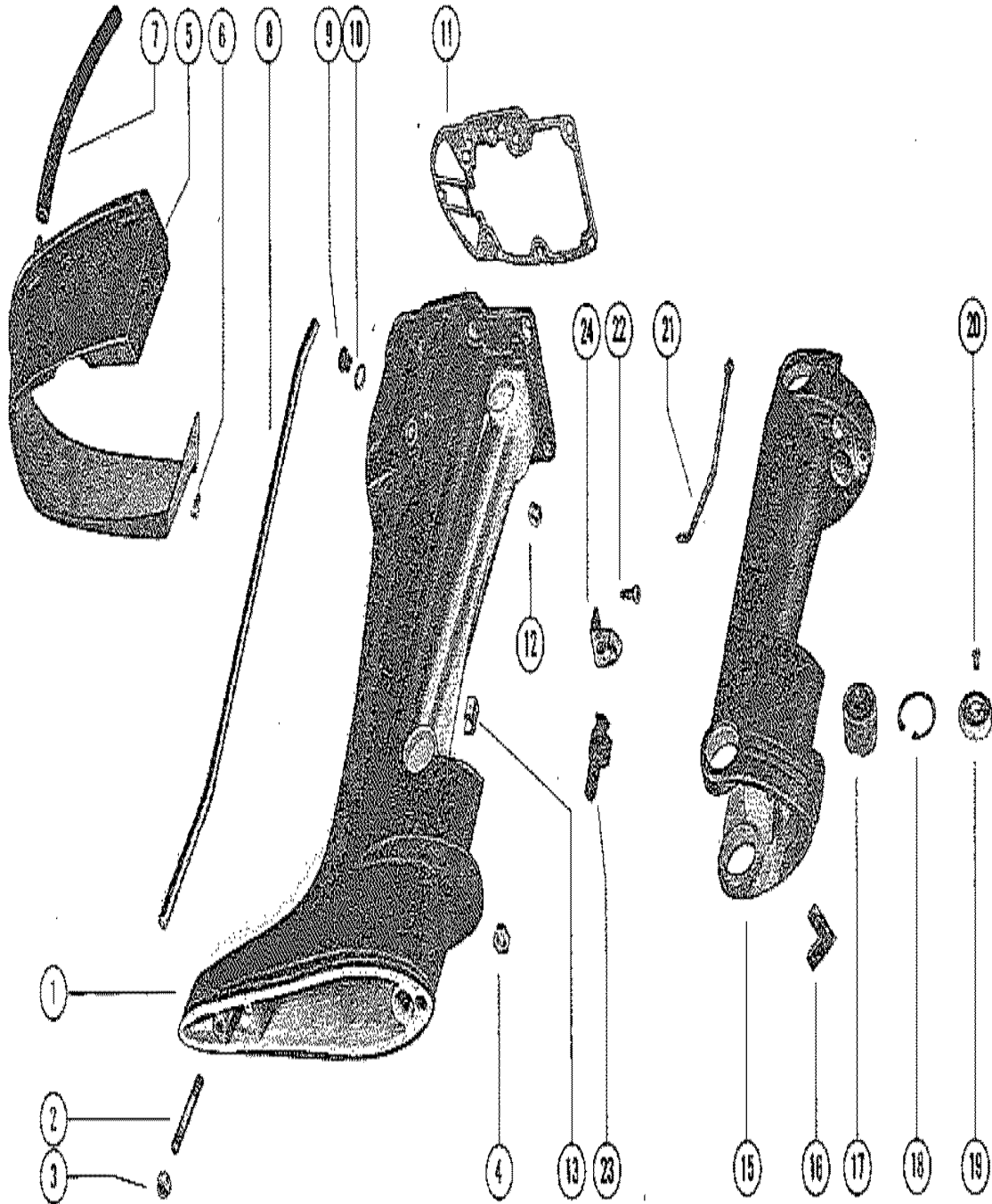
BOTTOM COWL AND STOP SWITCH ASSEMBLY



BOTTOM COWL AND STOP SWITCH ASSEMBLY

| REF. NO. | PART NO. | SYM. | QTY. | DESCRIPTION |
|----------|-------------|------|------|--|
| 1 | 2159-6681A2 | | 1 | COWL, BOTTOM |
| 2 | 79300 | | 2 | MOLDING, BOTTOM COWL |
| 3 | 74360 | | 1 | PLUG, BOTTOM COWL MANUAL |
| 4 | 39778 | | 1 | GROMMET, CHOKE SHAFT- BOTTOM COWL |
| 5 | 66353 | | 1 | COVER, ACCESS HOLE |
| 6 | 65479 | | 1 | COVER, ACCESS HOLE |
| 7 | 39474 | | 1 | ANCHOR, LATCH - BOTTOM COWL |
| 8 | 10-22483 | | 2 | SCREW, LATCH ANCHOR TO BOTTOM COWL (1 1/8") |
| 9 | 13-26992 | | 2 | LOCKWASHER, LATCH ANCHOR SCREW |
| 10 | 12-36554 | | 1 | WASHER, NYLON- WATER OUTLET TUBE |
| 11 | 26-36556 | | 1 | SEAL, RUBBER - WATER OUTLET TUBE |
| 12 | 10-38111 | | 1 | SCREW, BOTTOM COWL TO DRIVE SHAFT HOUSING (3/4") |
| 13 | 13-26992 | | 1 | LOCKWASHER,BOTTOM COWL SCREW |
| 14 | 27-45748 | | 1 | GASKET,POWERHEAD TO ADAPTOR PLATE |
| 15 | 74354 | | 1 | RETAINER, WIRING HARNESS (BOTTOM COWL) ELECTRIC |
| 16 | 10-48408 | | 1 | SCREW, RETAINER TO BOTTOM COWL ELECTRIC |
| 17 | 24-78810 | | 1 | SPRING, CABLE TO ARM LATCH |
| 18 | 78809 | | 1 | LATCH, ARM- BOTTOM COWL |
| 19 | 29-52168 | | 1 | PIN, ARM LOCATING |
| 20 | 78808 | | 1 | LATCH, BODY- BOTTOM COWL |
| 21 | 10-32228 | | 3 | SCREW, LATCH TO BOTTOM COWL |
| 22 | 27-39050 | | 1 | GASKET, BOTTOM COWL TO DRIVE SHAFT HOUSING |
| 23 | 87-69508A1 | | 1 | STOP SWITCH ASSEMBLY MANUAL |
| 24 | 13-69845 | | 1 | LOCKWASHER,STOP SWITCH MANUAL |
| 25 | 11-69844 | | 1 | NUT, STOP SWITCH -MANUAL |

DRIVE SHAFT HOUSING ASSEMBLY

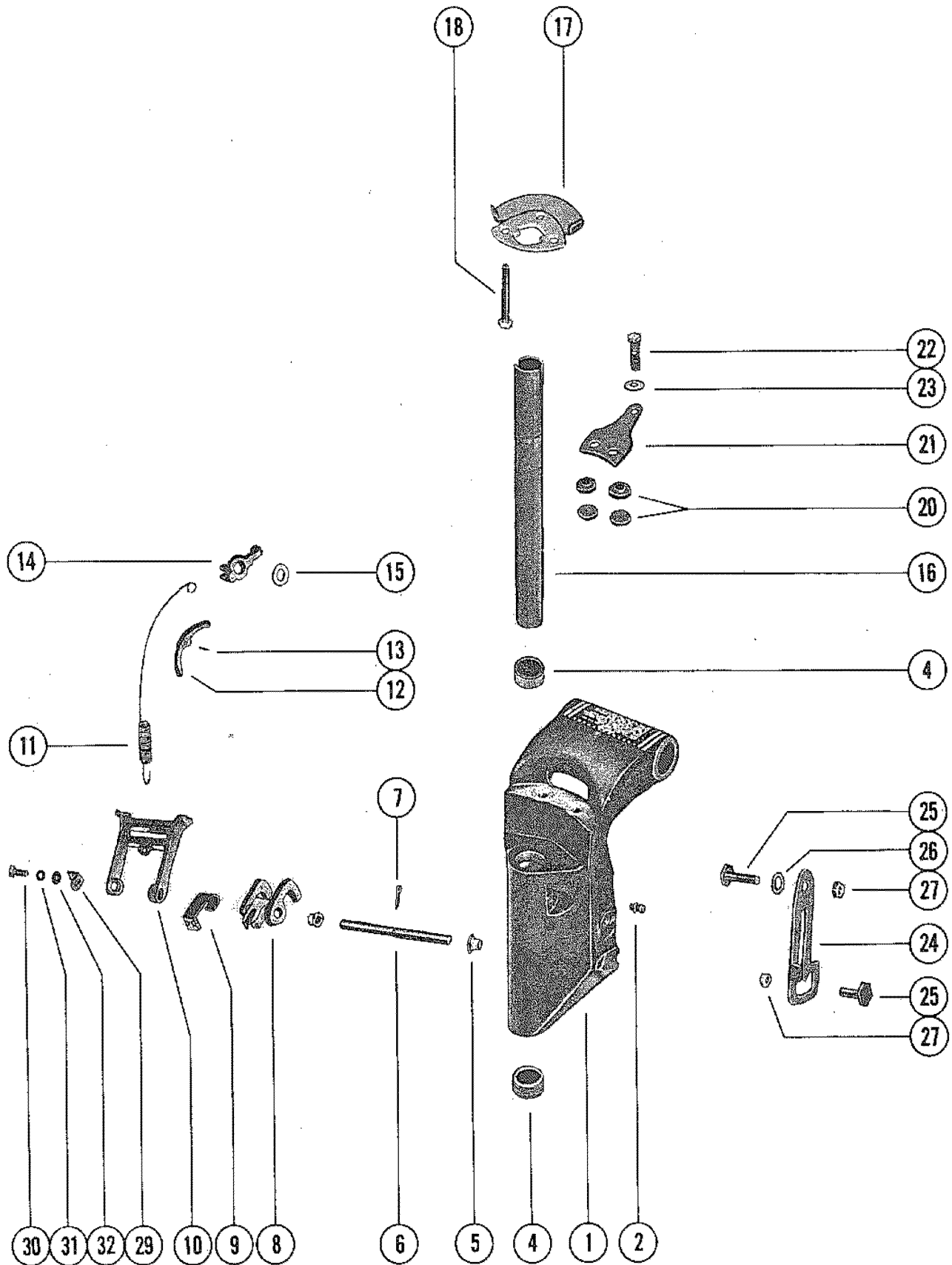


DRIVE SHAFT HOUSING ASSEMBLY

| REF. NO. | PART NO. | SYM. | QTY. | DESCRIPTION |
|----------|-------------|------|------|--|
| 1 | 4556-5945A2 | | 1 | DRIVE SHAFT HOUSING ASSEMBLY(SHORT SHAFT) |
| | 1558-5946A3 | | 1 | DRIVE SHAFT HOUSING ASSEMBLY(LONG SHAFT) |
| 2 | 16-66373 | | 1 | STUD, DRIVE SHAFT HOUSING TO GEAR HOUSING (2 5/16") |
| 3 | 11-34863 | | 1 | NUT, DRIVE SHAFT HOUSING STUD (3/8 - 24) |
| 4 | 11-35814 | | 1 | NUT, GEAR HOUSING TO DRIVE SHAFT HOUSING STUD 5/16 - 24) |
| 5 | 72471 | | 1 | COVER, TRIM - DRIVE SHAFT HOUSING |
| 6 | 10-64652 | | 4 | SCREW, TRIM COVER TO BOTTOM COWL (1/2") |
| 7 | 32-34395A1 | | 1 | HOSE, TELL TALE (9 1/2") |
| 8 | 32-39061 | | 1 | TUBE, WATER OUTLET SHORT SHAFT |
| | 32-39062 | | 1 | TUBE, WATER OUTLET LONG SHAFT |
| 9 | 10-28634 | | 1 | SCREW, FLUSH - DRIVE SHAFT HOUSING |
| 10 | 12-20260 | | 1 | WASHER, SEALING-FLUSH SCREW |
| 11 | 27-39050 | | 1 | GASKET, ADAPTOR PLATE TO DRIVE SHAFT HOUSING |
| 12 | 11-24652 | | 4 | NUT, DRIVE SHAFT HOUSING TO POWERHEAD STUDS |
| | 11-24652 | | 2 | NUT, DRIVE SHAFT HOUSING TO POWERHEAD STUDS |
| 13 | 55435 | | 1 | BLOCK, DRIVE SHAFT(LONG SHAFT) |
| 15 | 1559-6678A1 | | 1 | SADDLE ASSEMBLY |
| 16 | 64076 | | 1 | BUMPER, THRUST-SADDLE |
| 17 | 77754 | ▲ | 4 | MOUNT, LOWER AND UPPER |
| 18 | 53-26406 | | 4 | RING, RETAINING-UPPER AND LWER MOUNT |
| 19 | 71490 | | 2 | COVER, LOWER MOUNT |
| 20 | 10-72169 | | 2 | SCREW, LOWER MOUNT COVER TO MOUNT (7/16") |
| 21 | 71057 | | 1 | LINK ROD,REVERSE LOCK |
| 22 | 10-65414 | | 2 | SCREW, CAM RETAINER TO DRIVE SHAFT HOUSING (3/4") |
| 23 | 65216 | | 1 | CAM, REVERSE LOCK |
| 24 | 72007 | | 1 | RETAINER, REVERSE LOCK CAM |

▲ = FOR MERC 110L LONG SHAFT ENGINES, REPLACE 2 LOWER MOUNTS [A-77754] WITH 2 ([A-77755] MOUNTS.

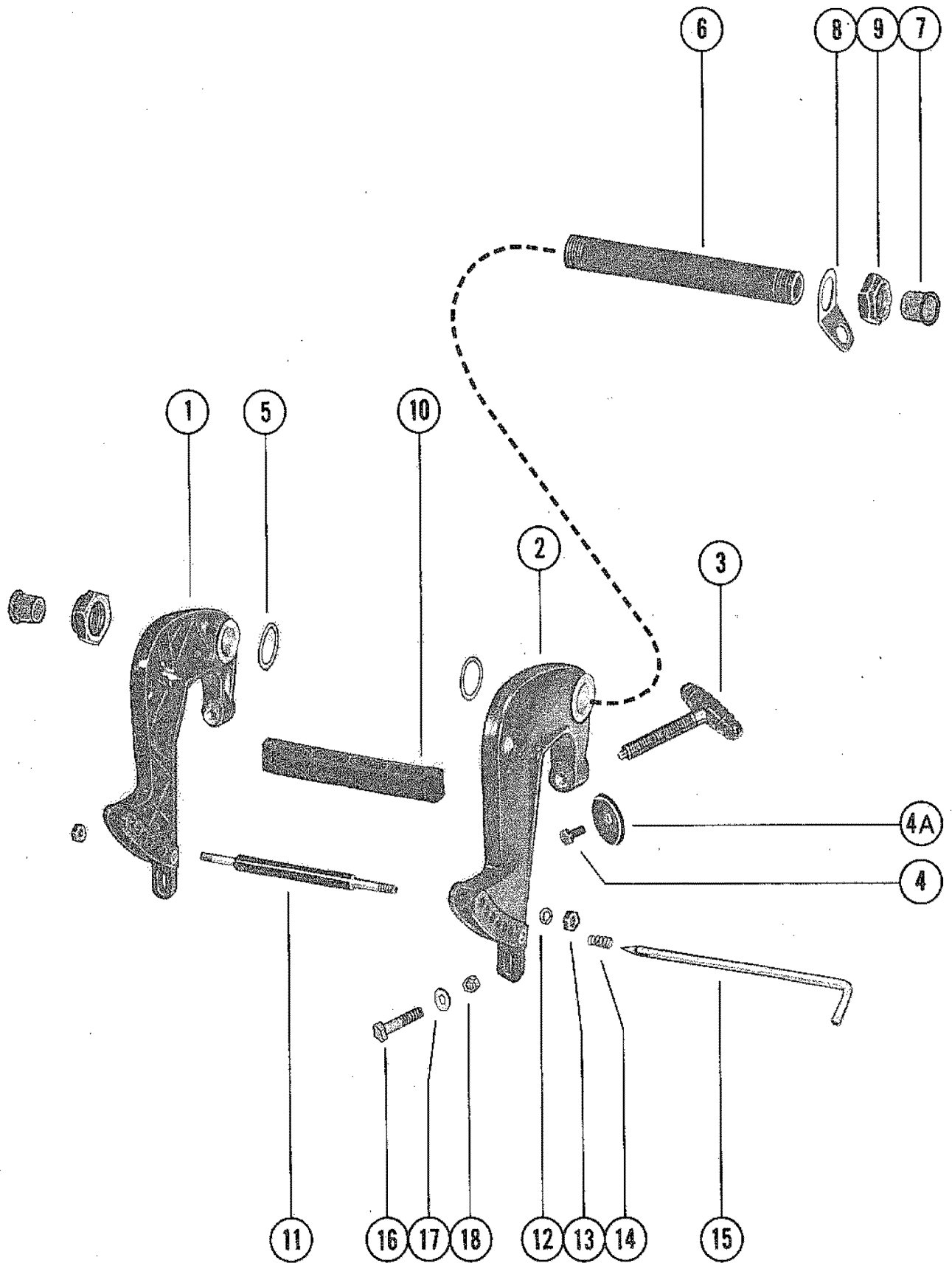
SWIVEL BRACKET ASSEMBLY



SWIVEL BRACKET ASSEMBLY

| REF. NO. | PART NO. | SYM. | QTY. | DESCRIPTION |
|----------|-------------|------|------|---|
| 1 | 1471-6578A1 | | 1 | SWIVEL BRACKET ASSEMBLY |
| 2 | 22-74036 | | 3 | FITTING, GREASE - SWIVEL BRACKET |
| 4 | 23-64028 | | 2 | BUSHING, SWIVEL BRACKET |
| 5 | 23-26841 | | 2 | BUSHING, NYLON - REVERSE LOCK LEVER ROD |
| 6 | 71419 | | 1 | ROD, REVERSE LOCK TO SWIVEL BRACKET |
| 7 | 18-45882 | | 1 | COTTER PIN, REVERSE LOCK LEVER TO ROD |
| 8 | 63628 | | 1 | LEVER, REVERSE LOCK |
| 9 | 61007 | | 1 | RETAINER, ROD - REVERSE LOCK |
| 10 | 63559 | | 1 | BRACKET, TROLL |
| 11 | 24-63630 | | 1 | SPRING, EXTENSION - TROLL BRACKET |
| 12 | 63554 | | 1 | GUIDE, SPRING |
| 13 | 17-25319 | | 1 | ROLL PIN, SPRING GUIDE |
| 14 | 63553 | | 1 | LEVER, CONTROL- TROLL BRACKET |
| 15 | 13-63631 | | 1 | WASHER, WAVE - TROLL BRACKET LEVER |
| 16 | 66559 | | 1 | TUBE, SWIVEL BRACKET TO SADDLE |
| 17 | 77334 | | 1 | CO-PILOT DISC |
| 18 | 10-78038 | | 3 | SCREW, CO-PILOT DISC TO SADDLE |
| 20 | 20203 | | 4 | DISC, FRICTION-CLAMP PLATE AND SWIVEL BRACKET |
| 21 | 72845A1 | | 1 | PLATE ASSEMBLY, CLAMP - CO-PILOT |
| 22 | 10-36154 | | 1 | SCREW, CLAMP PLATE ADJUSTING |
| 23 | 12-35462 | | 1 | WASHER, CLAMP PLATE ADJUSTING SCREW |
| 24 | 63310A1 | | 1 | LEVER ASSEMBLY, TILT STOP |
| 25 | 10-63311 | | 2 | SCREW, TILT STOP LEVER |
| 26 | 13-31030 | | 1 | WASHER, WAVE - LEVER ANCHOR SCREW |
| 27 | 11-35888 | | 2 | NUT, TILT STOP LEVER SCREW |
| 29 | 72794 | | 1 | STOP, REVERSE LOCK |
| 30 | 10-71056 | | 1 | SCREW, REVERSE STOP TO SWIVEL BRACKET |
| 31 | 13-26992 | | 1 | LOCKWASHER, REVERSE STOP SCREW |
| 32 | 12-71055 | | 1 | WASHER, REVERSE STOP SCREW |

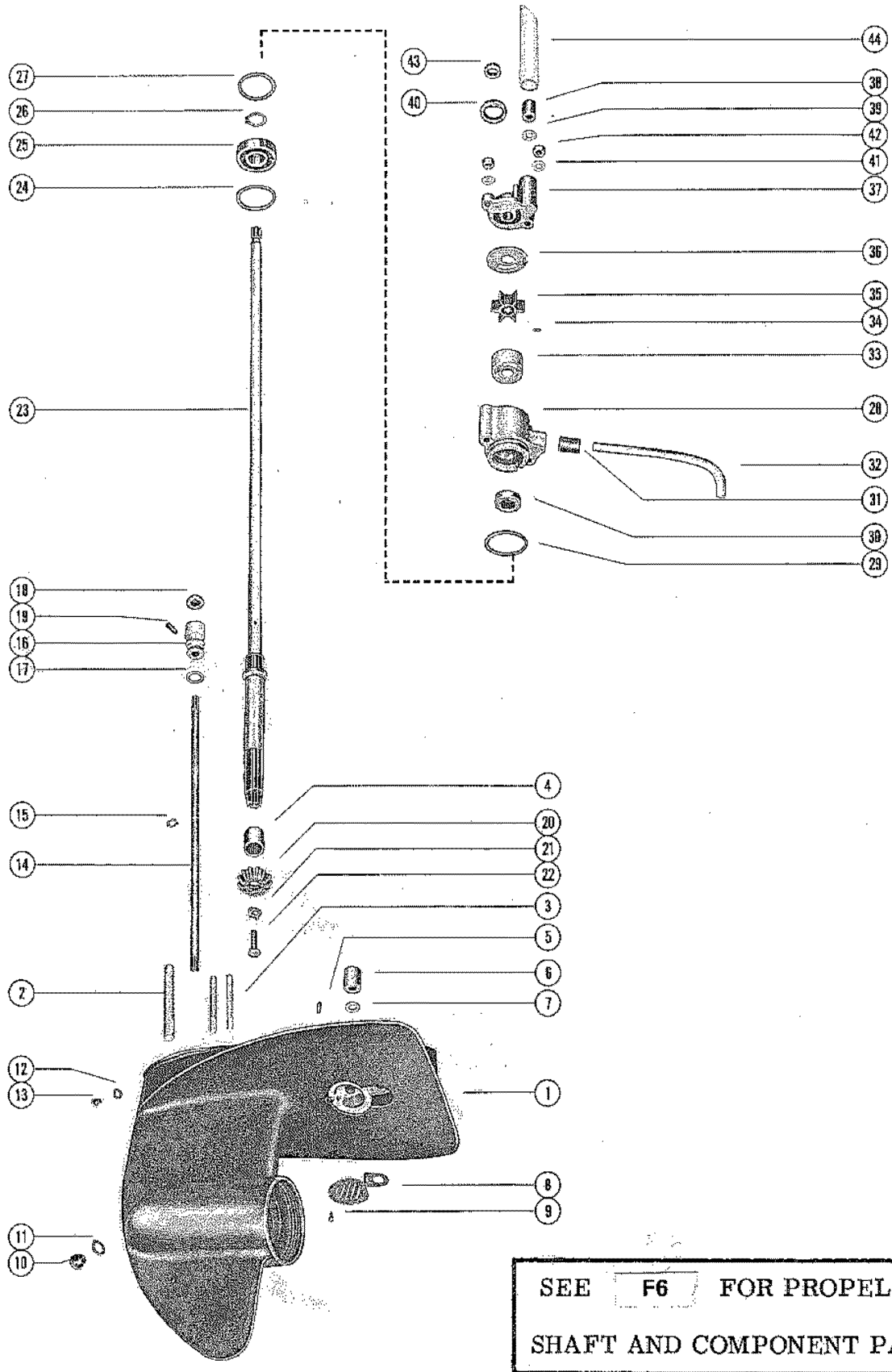
CLAMP BRACKET ASSEMBLY



CLAMP BRACKET ASSEMBLY

| REF. NO. | PART NO. | SYM. | QTY. | DESCRIPTION |
|----------|-------------|------|------|--|
| 1 | 1468-5570A2 | | 1 | CLAMP BRACKET ASSEMBLY (PORT) WASHER ATTACHED WITH A RETAINING RING |
| 2 | 1467-5571A2 | | 1 | CLAMP BRACKET ASSEMBLY (STARBOARD) WASHER ATTACHED WITH A RETAINING RING |
| 3 | 74159A3 | | 2 | THUMB SCREW ASSEMBLY WASHER ATTACHED WITH A RETAINING RING |
| 1 | 1468-5570A3 | | 1 | CLAMP BRACKET ASSEMBLY (PORT) WASHER ATTACHED WITH A SCREW |
| 2 | 1467-5571A3 | | 1 | CLAMP BRACKET ASSEMBLY (STARBOARD) WASHER ATTACHED WITH A SCREW |
| 3 | 10-77190A3 | | 2 | THUMB SCREW ASSEMBLY WASHER ATTACHED WITH A SCREW |
| 4 | 10-76804 | | 2 | SCREW, THUMB SCREW WASHER ATTACHED WITH A SCREW |
| 4A | 12-73719 | | 2 | WASHER, THUMB SCREW WASHER ATTACHED WITH A SCREW |
| 5 | 12-71421 | | 2 | WASHER, TILT TUBE - CLAMP TO SWIVEL BRACKET |
| 6 | 74250 | | 1 | TILT TUBE, CLAMP TO SWIVEL BRACKET |
| 7 | 19-39333 | | 2 | PLUG, TILT TUBE |
| 8 | 54-30954 | | 1 | CLIP, SAFETY CHAIN - TILT TUBE |
| 9 | 11-56041 | | 2 | NUT, TILT TUBE FASTENING |
| 10 | 71420 | | 1 | HANDLE, CARRYING |
| 11 | 16-71417 | | 1 | STUD, CLAMP BRACKET |
| 12 | 13-26992 | | 2 | LOCKWASHER, CLAMP BRACKET STUD |
| 13 | 11-29598 | | 2 | NUT, CLAMP BRACKET STUD |
| 14 | 24-62143 | | 1 | SPRING, TILT LOCK PIN |
| 15 | 17-71418A2 | | 1 | TILT LOCK PIN ASSEMBLY |
| 16 | 10-67982 | | 2 | BOLT, CLAMP BRACKET TO BOAT |
| 17 | 12-67983 | | 2 | WASHER, CLAMP BRACKET SCREW |
| 18 | 11-56374 | | 2 | NUT, CLAMP BRACKET SCREW |

GEAR HOUSING ASSEMBLY, COMPLETE (PAGE 1)



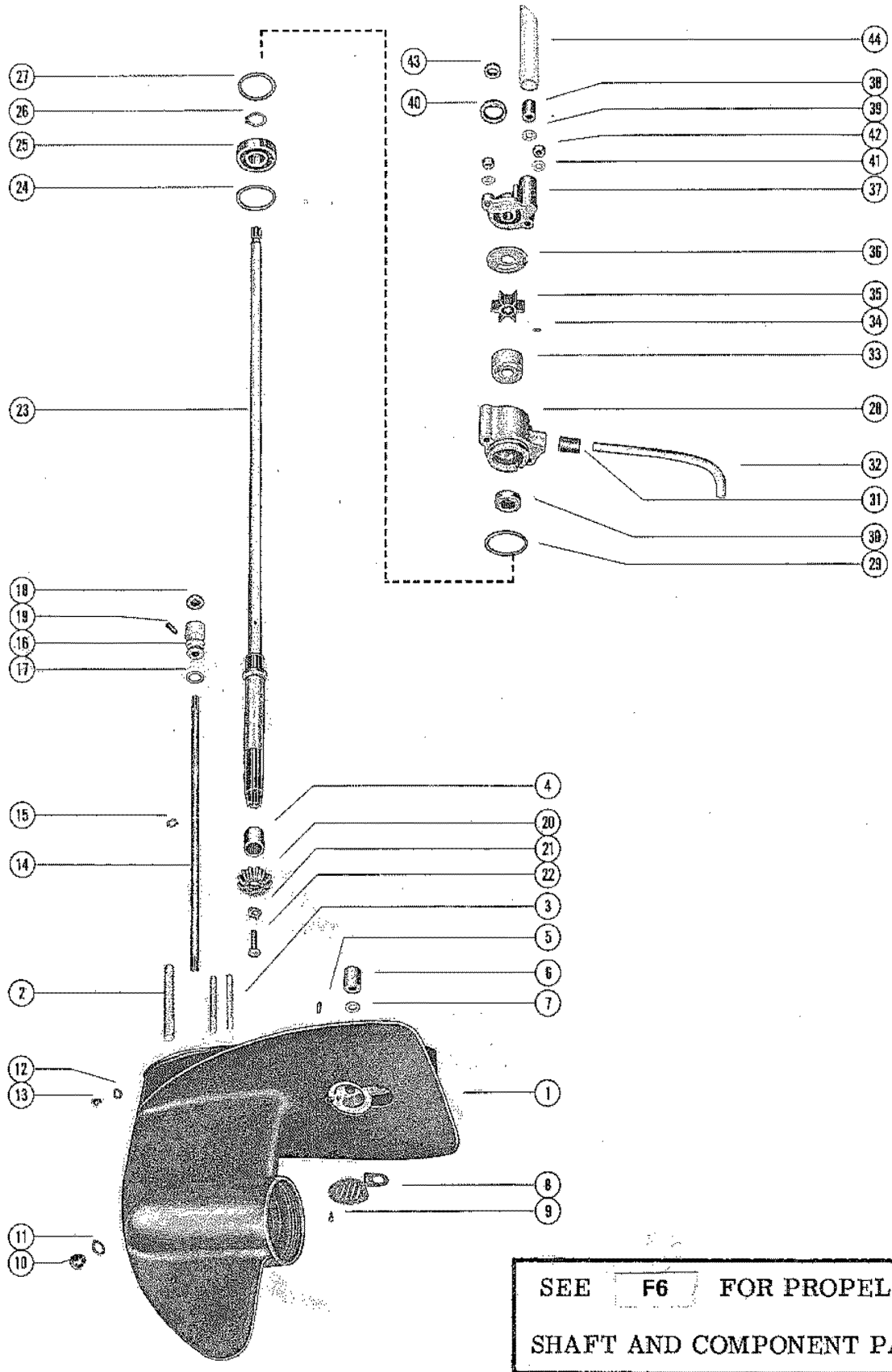
SEE **F6** FOR PROPELLER
SHAFT AND COMPONENT PARTS

GEAR HOUSING ASSEMBLY, COMPLETE (PAGE 1)

| REF. NO. | PART NO. | SYM. | QTY. | DESCRIPTION |
|----------|--------------|------|------|---|
| - | 1630-5908A6 | | 1 | GEAR HOUSING ASS'Y, COMP. (SHORT SHAFT) NOT MACHINED FOR ANODE KIT SEE NOTE BELOW |
| - | 1630-5908A7 | | 1 | GEAR HOUSING ASS'Y, COMP. (LONG SHAFT) NOT MACHINED FOR ANODE KIT SEE NOTE BELOW |
| - | | | 1 | GEAR HOUSING ASS'Y, COMP. (SHORT SHAFT) MACHINED FOR ANODE KIT SEE NOTE BELOW |
| - | 1630-7360A13 | | 1 | GEAR HOUSING ASS'Y, COMOP. (LONG SHAFT) MACHINED FOR ANODE KIT SEE NOTE BELOW |
| 1 | 1630-5908A5 | | 1 | GEAR HOUSING ASS'Y NOT MACHINED FOR ANODE KIT |
| | 1630-7360A11 | | 1 | GEAR HOUSING ASS'Y MACHINED FOR ANODE KIT |
| 2 | 16-58138 | | 1 | STUD, GEAR HOUSING TO DRIVE SHAFT HOUSING (3 7/16") |
| 3 | 16-58136 | | 2 | STUD, WATER PUMP HOUSING TO GEAR HOUSING (2 3/4") |
| 4 | 31-22756 | | 1 | BEARING, ROLLER - DRIVE SHAFT |
| 5 | 17-20032 | | 1 | PIN, DOWEL - LOCATING |
| 6 | 26-33613 | | 1 | SEAL, RUBBER - WATER INTAKE TUBE |
| 7 | 12-36555 | | 1 | WASHER, NYLON - INTAKE TUBE SEAL |
| 8 | 35-33425 | | 1 | SCREEN, WATER INTAKE |
| 9 | 10-28642 | | 1 | SCREW, WATER INTAKE SCREEN TO GEAR HOUSING |
| 10 | 10-28634 | | 1 | SCREW, GREASE FILLER HOLE |
| 11 | 12-20260 | | 1 | WASHER, GREASE FILLER HOLE SCREW |
| 12 | 12-20262 | | 1 | WASHER, GREASE VENT HOLE SCREW |
| 13 | 10-28653 | | 1 | SCREW, GREASE VENT HOLE |
| 14 | 71659A1 | | 1 | SHAFT ASSEMBLY, SHIF (SHORT SHAFT) |
| | 71658A1 | | 1 | SHAFT ASSEMBLY, SHIFT (LONG SHAFT) |
| 15 | 53-22899 | | 1 | RING, RETAINING - SHIFT SHAFT |
| 16 | 23-30676A1 | | 1 | BUSHING ASSEMBLY, SHIFT SHAFT |
| 17 | 25-26802 | | 1 | "O" RING, SHIFT SHAFT BUSHING |
| 18 | 26-30696 | | 1 | OIL SEAL, SHIFT SHAFT BUSHING |
| 19 | 10-39149 | | 1 | SCREW, SHIFT SHAFT BUSHING |
| 20 | 43-48579 | | 1 | GEAR, PINION |
| 21 | 14-30377 | | 1 | TAB WASHER, PINION GEAR TO DRIVE SHAFT SCREW |
| 22 | 10-30376 | | 1 | SCREW, PINION GEAR TO DRIVE SHAFT |
| 23 | 45-74851 | | 1 | DRIVE SHAFT (SHORT SHAFT) |
| | 45-74850 | | 1 | DRIVE SHAFT (LONG SHAFT) |
| 24 | 15-30527A1 | | AR | SHIM ASSEMBLY, BALL BEARING TO GEAR HOUSING (.002-3-5-10) |
| 25 | 30-70944 | | 1 | BEARING, BALL - DRIVE SHAFT |
| 26 | 53-30523 | | 1 | RING, RETIANING - BALL BEARING TO DRIVE SHAFT |
| 27 | 15-30527A1 | | AR | SHIM ASSEMBLY, BALL BEARING TO GEAR HOUSING (.002-3-5-10) |
| 28 | 46-70941A1 | | 1 | WATER PUMP HOUSING ASSEMBLY |
| 29 | 25-29439 | | 1 | "O" RING, WATER PUMP HOUSING |
| 30 | 26-30900 | | 1 | OIL SEAL, WATER PUMP HOUSING |

CONTINUED ON NEXT PAGE ➡

GEAR HOUSING ASSEMBLY, COMPLETE (PAGE 1)

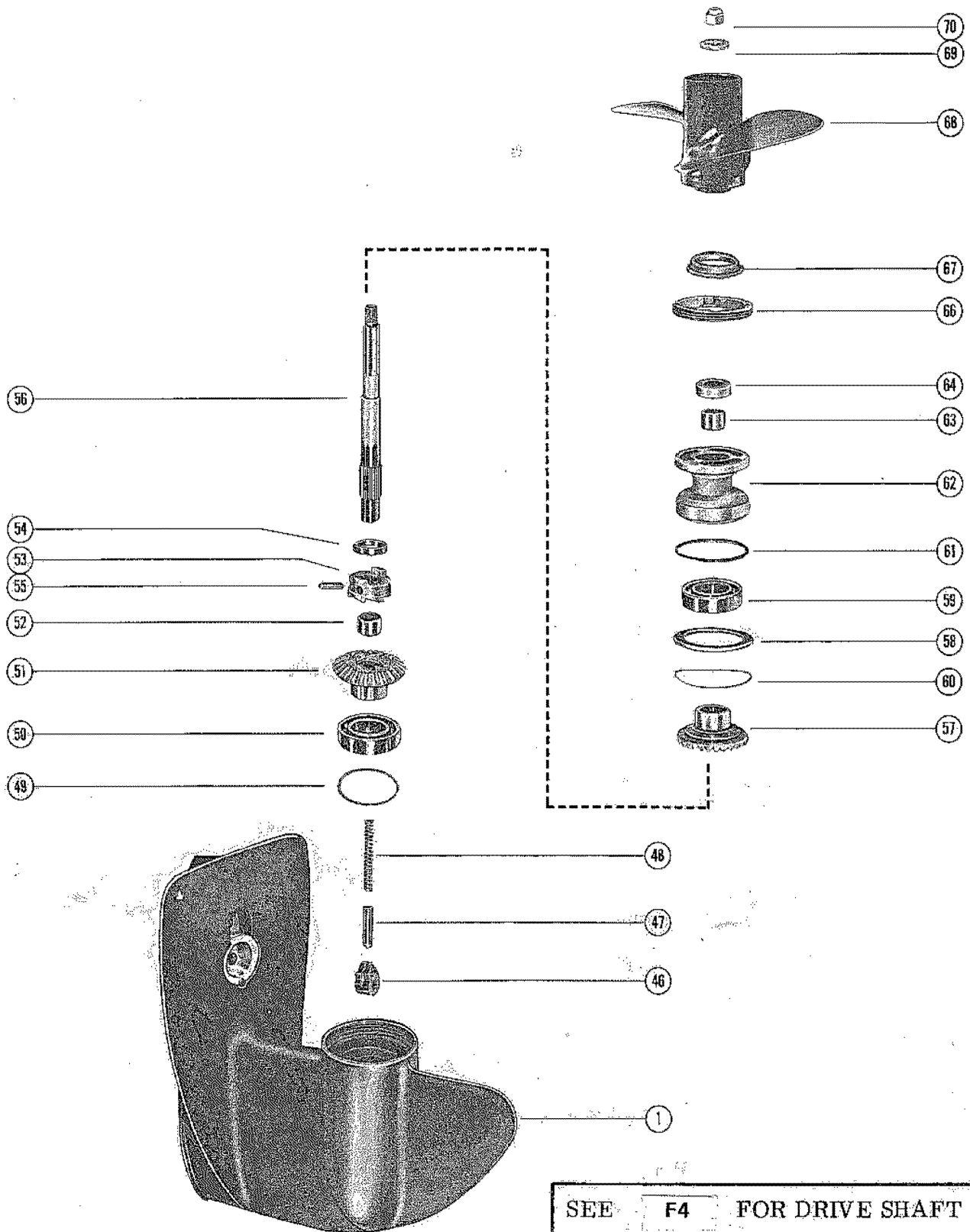


SEE **F6** FOR PROPELLER
SHAFT AND COMPONENT PARTS

GEAR HOUSING ASSEMBLY, COMPLETE (PAGE 1)

| REF. NO. | PART NO. | SYM. | QTY. | DESCRIPTION |
|----------|----------|------|------|--|
| 31 | 26-33613 | | 1 | SEAL, WATER INTAKE TUBE |
| 32 | 32-34293 | | 1 | TUBE, WATER INTAKE |
| 33 | 70977 | | 1 | INSERT, WATER PUMP HOUSING |
| 34 | 28-56655 | | 1 | KEY, IMPELLER DRIVE |
| 35 | 47-65957 | | 1 | IMPELLER, WATER PUMP |
| 36 | 46895 | | 1 | PLATE, FACE - WATER PUMP HOUSING TO WATER PUMP COVER |
| 37 | 46896A1 | | 1 | WATER PUMP COVER ASSEMBLY |
| 38 | 26-36558 | | 1 | SEAL, WATER PUMP COVER |
| 39 | 12-36554 | | 1 | WASHER, NYLON - WATER PUMP COVER |
| 40 | 26-30913 | | 1 | OIL SEAL, WATER PUMP COVER |
| 41 | 12-20533 | | 2 | WASHER, WATER PUMP HOUSING AND COVER STUDS |
| 42 | 11-35888 | | 2 | NUT, WATER PUMP HOSUING AND COVER STUDS |
| 43 | 25-30526 | | 1 | RING, RUBBER - CENTRIFUGAL SLINGER (DRIVE SHAFT) |
| 44 | 23-31792 | | 1 | SLEEVE, GUIDE - WATER INLET TUBE |

GEAR HOUSING ASSEMBLY, COMPLETE (PAGE 2)



SEE F4 FOR DRIVE SHAFT
AND COMPONENT PARTS

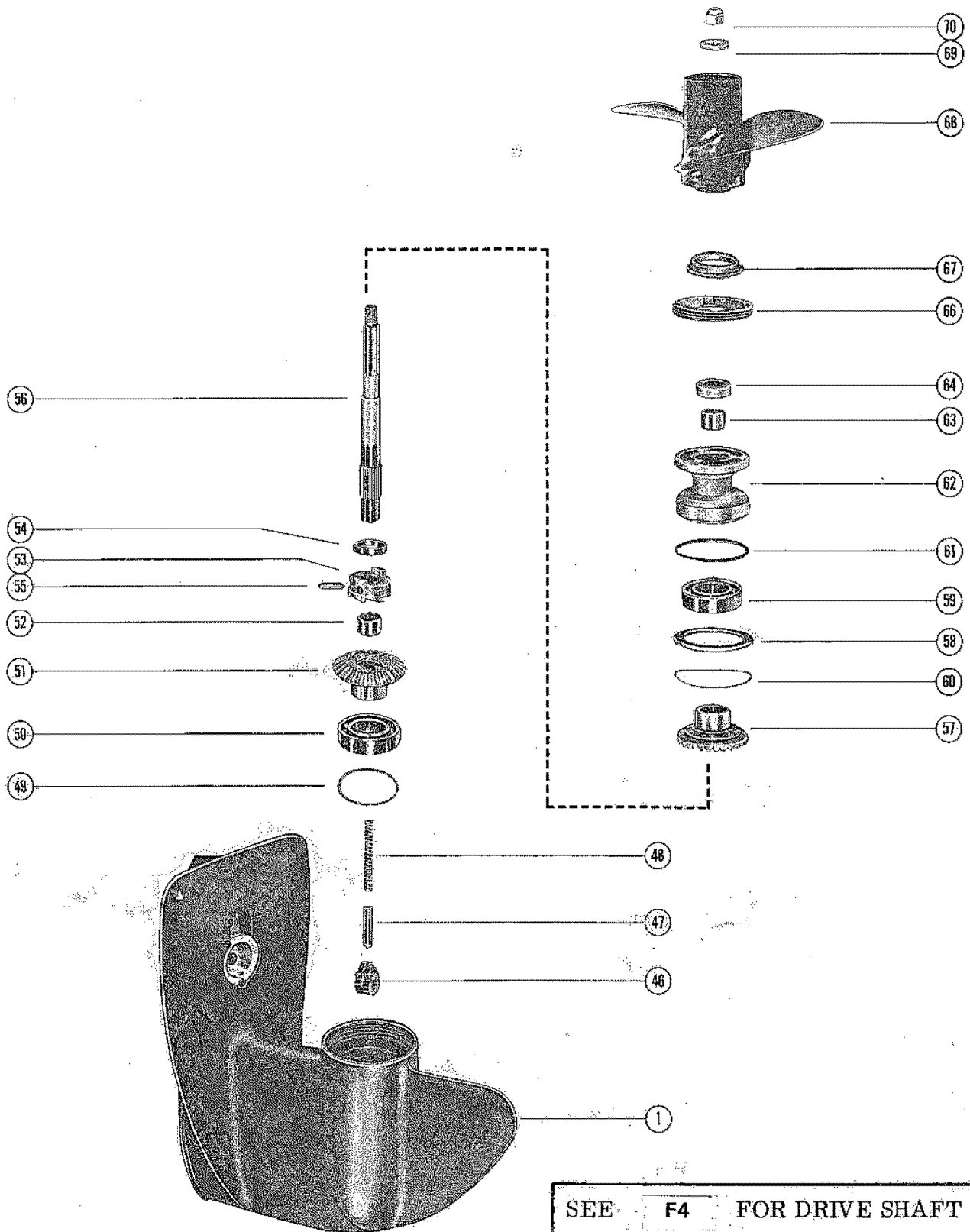
GEAR HOUSING ASSEMBLY, COMPLETE (PAGE 2)

| REF. NO. | PART NO. | SYM. | QTY. | DESCRIPTION |
|----------|--------------|------|------|--|
| - | 1630-5908A6 | ● | 1 | GEAR HOUSING ASS'Y, COMP. (SHORT SHAFT) NOT MACHINED FOR ANODE KIT |
| - | 1630-5908A7 | ● | 1 | GEAR HOUSING ASS'Y, COMP. (LONG SHAFT) NOT MACHINED FOR ANODE KIT |
| - | 1630-7360A12 | ● | 1 | GEAR HOSUING ASS'Y, COMP. (SHORT SHAFT) MACHINED FOR ANODE KIT |
| - | 1630-7360A13 | ● | 1 | GEAR HOUSING ASS'Y, COMP. (LONG SHAFT) MACHINED FOR ANODE KIT |
| 1 | 1630-5908A5 | ● | 1 | GEAR HOUSING ASS'Y - NOT MACHINED FOR ANODE KIT |
| | 1630-7360A11 | ● | 1 | GEAR HOUSING ASS'Y - MACHINED FOR ANODE KIT |
| 46 | 58981 | | 1 | CAM, SHIFT |
| 47 | 31334 | | 1 | FOLLOWER, SHIFT CAM |
| 48 | 24-76298 | | 1 | SPRING, COMPRESSION - CAM FOLLOWER |
| 49 | 15-30522A1 | | AR | SHIM ASSEMBLY, BALL BEARING TO HOUSING (.002-3-5-10) |
| 50 | 30-21889 | | 1 | BEARING, BALL - FORWARD GEAR |
| 51 | 43-48577 | | 1 | FORWARD GEAR |
| 52 | 31-22458 | | 1 | BEARING, ROLLER - FORWARD GEAR |
| 53 | 52-63314 | | 1 | RATCHET, SLIDING CLUTCH |
| 54 | 53-32449 | | 1 | RING, RETAINING - CROSS PIN |
| 55 | 17-30535 | | 1 | PIN, CROSS - RATCHET TO PROPELLER SHAFT |
| 56 | 44-75667A2 | | 1 | SHAFT ASSEMBLY, PROPELLER |
| 57 | 43-63316 | | 1 | REVERSE GEAR |
| 58 | 71479 | | 1 | SLEEVE, THRUST - REVERSE GEAR |
| 59 | 30-21889 | | 1 | BEARING, BALL - REVERSE GEAR |
| 60 | 15-30532A1 | | AR | SHIM ASSEMBLY, THRUST WASHER TO HOUSING (.002-3-5-10) |
| 61 | 25-30529 | | 1 | "O" RING, BEARING CARRIER |
| 62 | 72673A1 | | 1 | BEARING CARRIER ASSEMBLY |
| 63 | 31-22458 | | 1 | BEARING, ROLLER - BEARING CARRIER |
| 64 | 26-66022 | | 1 | OIL SEAL, BEARING CARRIER |
| 66 | 72671 | | 1 | COVER, GEAR HOUSING |
| 67 | 75023 | | 1 | COLLAR, PROPELLER GUIDE |
| 68 | 48-77968A1 | | 1 | PROPELLER ASSEMBLY (SHIPPED WITH ENGINE FROM FACTORY) |
| | 48-47922A1 | | OPT | PROPELLER ASS'Y, 9" DIA., 9" PITCH, 2 BLADES ALUMINUM |
| | 48-47926A1 | | OPT | PROPELLER ASS'Y, 9"DIA., 10" PITCH, 2 BLADES ALUMINUM |
| | 48-47670A1 | | OPT | PROPELLER ASS'Y, 8 3/4" DIA., 7" PITCH, 3 BLADES ALUMINUM |

● = THE ENCLOSED GEAR HOUSINGS INCLUDE ALL PARTS FROM REFERENCE #1- #66 AS LISTED ON THIS PAGE

CONTINUED ON NEXT PAGE ➡

GEAR HOUSING ASSEMBLY, COMPLETE (PAGE 2)

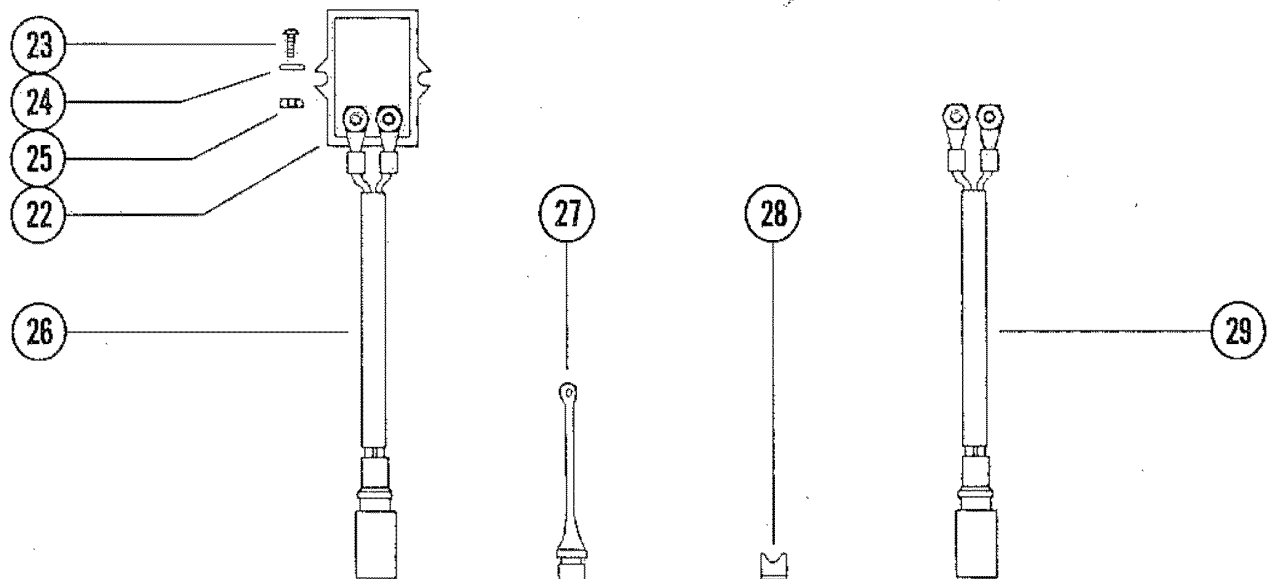
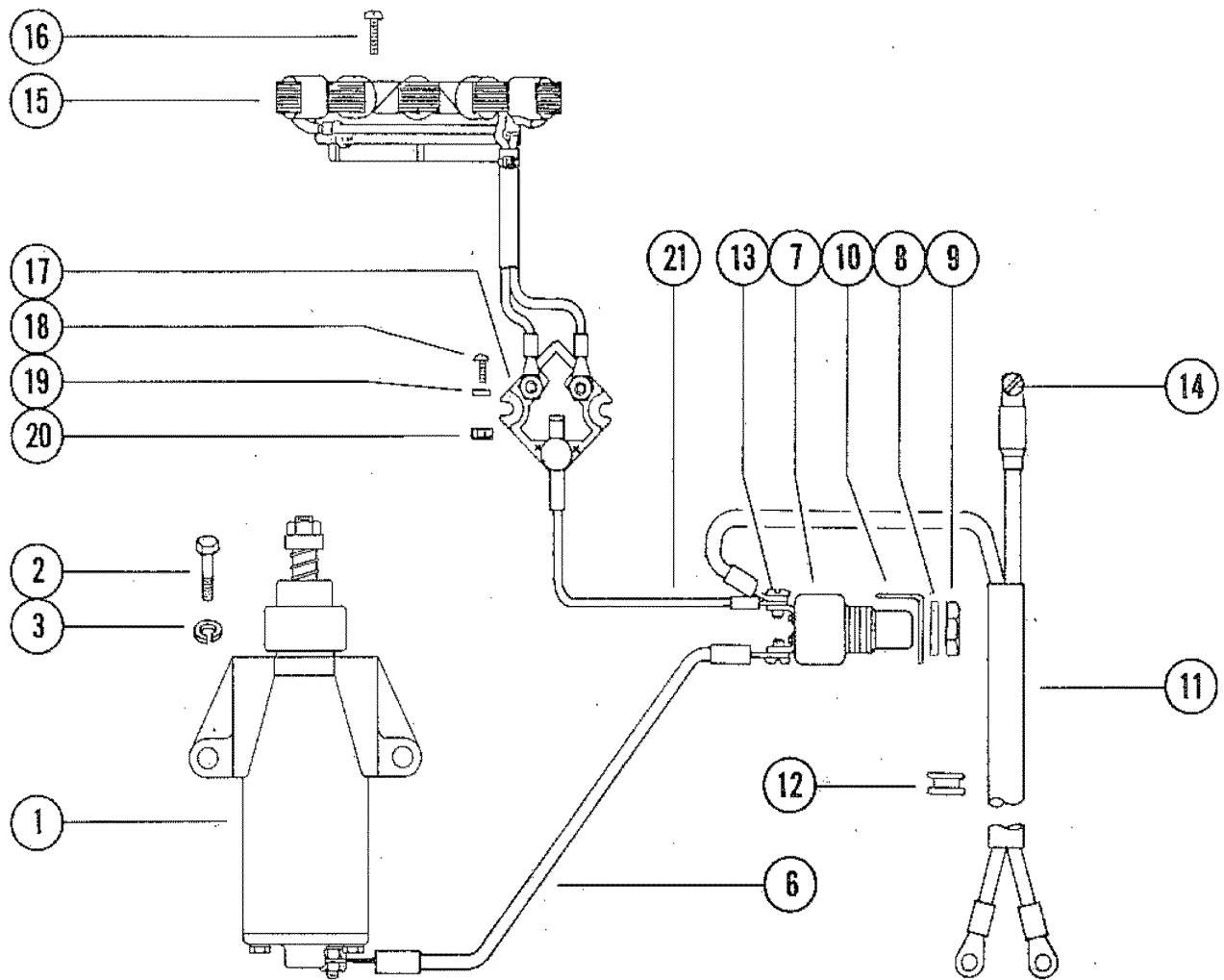


SEE F4 FOR DRIVE SHAFT
AND COMPONENT PARTS

GEAR HOUSING ASSEMBLY, COMPLETE (PAGE 2)

| REF. NO. | PART NO. | SYM. | QTY. | DESCRIPTION |
|----------|-----------------|------|-----------|--|
| 68 | 48-65012A1 | | OPT | PROPELLER ASS'Y, 8 3/4" DIA., 7" PITCH, 3 BLADES NYLON |
| - | 66606 | | 1 | THRUST HUB USED WITH NYLON PROP ONLY |
| 69 | 23-65439 | | 1 | SPACER, PROPELLER SHAFT PART OF PROPELLER SHAFT ASSEMBLY |
| - | 12-79552 | | AR | WASHER, PROPELLER SHAFT |
| 70 | 11-64075 | | 1 | NUT, PROPELLER |

ELECTRIC COMPONENTS



ELECTRIC COMPONENTS

| REF. NO. | PART NO. | SYM. | QTY. | DESCRIPTION |
|----------|------------|------|------|--|
| 1 | 50-78011 | | 1 | STARTER MOTOR |
| 2 | 10-55511 | | 2 | SCREW, STARTER MOTOR TO CYLINDER BLOCK (1 1/4") |
| 3 | 13-26993 | | 2 | LOCKWASHER, STARTER MOTOR SCREW |
| 6 | 84-76741A1 | | 1 | WIRE ASSEMBLY, STARTING SWITCH (YELLOW) |
| 7 | 87-73883 | | 1 | SWITCH, STARTING |
| 8 | 12-30516 | | 1 | WASHER, STARTING SWITCH |
| 9 | 11-74394 | | 1 | NUT, STARTING SWITCH |
| 10 | 74515 | | 1 | PROTECTOR, STARTING SWITCH |
| 11 | 84-73573 | | 1 | CABLE, BATTERY |
| 12 | 25-74444 | | 1 | GROMMET, BATTERY CABLE |
| 13 | 45148 | | 1 | SCREW, BATTERY CABLE ATTACHING (5/16") |
| 14 | 10-20031 | | 1 | SCREW, BATTERY CABLE ATACHING (7/8") |
| 15 | 74367A8 | | 1 | LIGHTING STATOR ASSEMBLY |
| 16 | 10-73696 | | 2 | SCREW, LIGHTING STATOR ATTACHING (1 5/8") |
| 17 | 62351A2 | | 1 | RECTIFIER ASSEMBLY |
| 18 | 10-48408 | | 2 | SCREW, RECTIFIER TO MANIFOLD COVER (1/2") |
| 19 | 23-62769 | | 1 | SPACER, RECTIFIER SCREW |
| 20 | 11-45076 | | 3 | NUT, RECTIFIER TERMINAL |
| 21 | 84-61393A6 | | 1 | WIRE ASSEMBLY, RECTIFIER TO STARTING SWITCH (RED) |
| 22 | 75076 | | 1 | VOLTAGE REGULATOR - BELGIUM |
| 23 | 10-74841 | | 2 | SCREW, VOLTAGE REGULATOR TO MANIFOLD COVER (1") - BELGIUM |
| 24 | 23-62769 | | 2 | SPACER, VOLTAGE REGULATOR SCREW |
| 25 | 11-45076 | | 2 | NUT, VOLTAGE REGULATOR TERMINAL BELGIUM |
| 26 | 84-74725A1 | | 1 | HARNESS ASSEMBLY, VOLTAGE REGULATOR (BLACK/RED) BELGIUM |
| 27 | 71663 | | 1 | PLUG, HARNESS BELGIUM |
| 28 | 74361 | | 1 | PLUG, HARNESS TO BOTTOM COWL BELGIUM |
| 29 | 84-65017A4 | | 1 | HARNESS ASSEMBLY, LIGHTING (EXTERNAL) BELGIUM |
| 15 | 74367A8 | | 1 | LIGHTING STATOR ASSEMBLY BELGIUM |

PARTS INDEX

| Part Number | Description | Pg. | Ref. No. | Part Number | Description | Pg. | Ref. No. |
|-------------|--|-----|----------|-------------|--|-----|----------|
| 20155 | RETAINER, STARTER SPRING | 3 | 24 | 63646 | LEVER, THROTTLE | 11 | 37 |
| 20203 | DISC, FRICTION-CLAMP PLATE AND SWIVEL BRACKET | 33 | 20 | 63980 | KNOB, CHOKE | 15 | 13 |
| 22833 | ADAPTOR, CHECK UNIT (FUEL LINE) | 15 | 5 | 64076 | BUMPER, THRUST-SADDLE | 31 | 16 |
| 23069 | STEM, CHECK UNIT ADAPTOR | 15 | 6 | 65216 | CAM, REVERSE LOCK | 31 | 23 |
| 24789A1 | FLUSHING ASSEMBLY | 1 | - | 65479 | COVER, ACCESS HOLE | 29 | 6 |
| 26179 | RETAINER, SHEAVE SHAFT TO STARTER SHEAVE | 3 | 39 | 65489--3 | SEAL, TOP COWL (16 1/2") | 3 | 2 |
| 30188 | CUP WASHER, ADAPTOR | 15 | 9 | 65499--1 | SEAL, STARTER HOUSING TO TOP COWL | 3 | 16 |
| 30595 | PLATE, RETAINER - STARTER PAWL | 5 | 42 | 65552 | SCREEN, CARBURETOR | 15 | 11 |
| 30596 | PAWL, STARTER | 3 | 36 | 66353 | COVER, ACCESS HOLE | 29 | 5 |
| 31334 | FOLLOWER, SHIFT CAM | 41 | 47 | 66355 | COVER, IGNITION COIL | 7 | 8 |
| 35558 | SHAFT, SHEAVE | 5 | 43 | 66371 | LINK, TRIGGER HOUSING TO THROTTLE LEVER | 9 | 14 |
| 36017 | STOP, NEUTRAL SPEED LIMITER | 19 | 8 | 66374A2 | LEVER ASSEMBLY, THROTTLE CONTROL | 19 | 13 |
| 39474 | ANCHOR, LATCH - BOTTOM COWL | 29 | 7 | 66376 | HANDLE, SHIFT CONTROL (MANUAL) | 17 | 1 |
| 39601 | PLATE, DETENT SPRING | 17 | 12 | 66379 | SHAFT, SHIFT CONTROL | 17 | 7 |
| 39778 | GROMMET, CHOKE SHAFT - BOTTOM COWL | 29 | 4 | 66393 | SHAFT, THROTTLE | 27 | 3 |
| 45148 | SCREW, BATTERY CABLE ATTACHING (5/16") | 45 | 13 | 66394A1 | HANDLE, THROTTLE SHAFT | 27 | 4 |
| 46895 | PLATE, FACE - WATER PUMP HOUSING TO WATER PUMP COVER | 39 | 36 | 66559 | TUBE, SWIVEL BRACKET TO SADDLE | 33 | 16 |
| 46896A1 | WATER PUMP COVER ASSEMBLY | 39 | 37 | 66606 | THRUST HUB | 43 | -- |
| 48003 | PIVOT, STEERING HANDLE TO BRACKET | 27 | 10 | 66941 | BLANKET, TOP COWL - SIDE | 3 | 4 |
| 55435 | BLOCK, DRIVE SHAFT (LONG SHAFT) | 31 | 13 | 66942 | BLANKET, TOP COWL - TOP BRACKET ASSEMBLY, STEERING ARM | 27 | 16 |
| 55860 | PULLEY, STARTER CABLE | 3 | 18 | 68768A2 | "D" WASHER, TRIGGER LEAD CLIP | 15 | 19 |
| 58981 | CAM, SHIFT | 41 | 46 | 69205 | BUMPER, COWL - REAR | 3 | 9 |
| 60850 | ARM, STEERING HANDLE | 27 | 7 | 69346 | BLANKET, TOP COWL - FRONT | 3 | 5 |
| 60850A6 | STEERING HANDLE ASSEMBLY, COMPLETE | 27 | - | 69522 | VENTURI | 11 | 21 |
| 60854 | GRIP, HANDLE | 27 | 1 | 69764 | INSERT, WATER PUMP HOUSING | 39 | 33 |
| 60857A2 | UNIVERSAL JOINT ASSEMBLY | 27 | 13 | 70977 | LINK ROD, REVERSE LOCK | 31 | 21 |
| 60885 | HOUSING, THROTTLE CONTROL | 19 | 2 | 71057 | ROD, REVERSE LOCK TO SWIVEL BRACKET | 33 | 6 |
| 61007 | RETAINER, ROD - REVERSE LOCK | 33 | 9 | 71419 | HANDLE, CARRYING | 35 | 10 |
| 61990 | STA-STRAP | 9 | 19 | 71420 | SLEEVE, THRUST - REVERSE GEAR | 41 | 58 |
| 62251 | CAP, HANDLE | 27 | 2 | 71479 | COVER, LOWER MOUNT | 31 | 19 |
| 62351A2 | RECTIFIER ASSEMBLY | 45 | 17 | 71502 | COVER, FRONT | 3 | 7 |
| 63308A1 | FOLLOWER ASSEMBLY, NEUTRAL SPEED LIMITER | 19 | 4 | 71658A1 | SHAFT ASSEMBLY, SHIFT (LONG SHAFT) | 37 | 14 |
| 63310A1 | LEVER ASSEMBLY, TILT STOP | 33 | 24 | 71659A1 | SHAFT ASSEMBLY, SHIF (SHORT SHAFT) | 37 | 14 |
| 63553 | LEVER, CONTROL - TROLL BRACKET | 33 | 14 | 71660 | SHIFT SHAFT | 17 | 16 |
| 63554 | GUIDE, SPRING | 33 | 12 | 71663 | PLUG, HARNESS | 45 | 27 |
| 63559 | BRACKET, TROLL | 33 | 10 | 72007 | RETAINER, REVERSE LOCK CAM | 31 | 24 |
| 63628 | LEVER, REVERSE LOCK | 33 | 8 | 72465 | CABLE, CHOKE | 15 | 15 |
| | | | | 72471 | COVER, TRIM - DRIVE SHAFT HOUSING | 31 | 5 |
| | | | | 72671 | COVER, GEAR HOUSING | 41 | 66 |
| | | | | 72673A1 | BEARING CARRIER ASSEMBLY | 41 | 62 |
| | | | | 72794 | STOP, REVERSE LOCK | 33 | 29 |
| | | | | 72845A1 | PLATE ASSEMBLY, CLAMP - CO-PILOT | 33 | 21 |

PARTS INDEX

| Part Number | Description | Pg. | Ref. No. | Part Number | Description | Pg. | Ref. No. |
|-------------|-------------------------|-----|----------|-------------|-------------------------|-----|----------|
| 74159A3 | THUMB SCREW ASSEMBLY | 35 | 3 | 10-22654 | SCREW, LEADS TO | | |
| 74250 | TILT TUBE, CLAMP TO | | | | TERMINAL BLOCK (3/8") | 9 | 10 |
| | SWIVEL BRACKET | 35 | 6 | 10-23035 | SCREW, CHOKE SHUTTER | | |
| 74350 | LEVER, SHIFT CONTROL | | | | TO CHOKE SHAFT | 11 | 20 |
| | (REMOTE) | 17 | 5 | 10-23178 | SCREW, PLUG - IDLE TUBE | 11 | 41 |
| 74351 | LEVER, FOLLOWER | 3 | 31 | 10-25764 | SCREW, PLATE AND | | |
| 74352 | HANDLE, SHIFT CONTROL | | | | SPRING TO ADAPTOR | | |
| | (ELECTRIC) | 17 | 1 | | PLATE | 17 | 13 |
| 74353 | LEVER, LOCK | 3 | 30 | 10-26537 | SCREW, INTAKE COVER TO | | |
| 74354 | RETAINER, WIRING | | | | CYLINDER BLOCK | 21 | 26 |
| | HARNESS (BOTTOM | | | 10-26801 | SCREW, MAIN BEARING | | |
| | COWL) | 29 | 15 | | LOCKING (5/8") | 21 | 15 |
| 74359 | SHAFT, INTERLOCK | 3 | 29 | 10-27304 | SCREW, REED STOP | | |
| 74360 | PLUG, BOTTOM COWL | 29 | 3 | | MOUNTING | 23 | 10 |
| 74361 | PLUG, HARNESS TO | | | 10-28634 | SCREW, FLUSH - DRIVE | | |
| | BOTTOM COWL | 45 | 28 | | SHAFT HOUSING | 31 | 9 |
| 74367A8 | LIGHTING STATOR | | | 10-28634 | SCREW, GREASE FILLER | | |
| | ASSEMBLY | 45 | 15 | | HOLE | 37 | 10 |
| 74367A8 | LIGHTING STATOR | | | 10-28642 | SCREW, WATER INTAKE | | |
| | ASSEMBLY | 45 | 15 | | SCREEN TO GEAR | | |
| 74515 | PROTECTOR, STARTING | | | | HOUSING | 37 | 9 |
| | SWITCH | 45 | 10 | 10-28653 | SCREW, GREASE VENT | | |
| 74919 | COVER, EXHAUST | | | | HOLE | 37 | 13 |
| | MANIFOLD | 21 | 35 | 10-28668 | SCREW, BAFFLE PLATE | 21 | 36 |
| 75023 | COLLAR, PROPELLER | | | 10-28710 | SCREW, NUETRAL SPEED | | |
| | GUIDE | 41 | 67 | | LIMITER STOP TO | | |
| 75076 | VOLTAGE REGULATOR - | | | | FOLLOWER | 19 | 9 |
| | BELGIUM | 45 | 22 | 10-28789 | SCREW, CABLE PULLEY TO | | |
| 77334 | CO-PILOT DISC | 33 | 17 | | STARTER HOUSING | 3 | 19 |
| 77754 | MOUNT, LOWER AND | | | 10-30376 | SCREW, PINION GEAR TO | | |
| | UPPER | 31 | 17 | | DRIVE SHAFT | 37 | 22 |
| 77859 | INSERT, ROPE GUIDE - | | | 10-32228 | SCREW, LATCH TO | | |
| | STARTER HOUSING | 3 | 15 | | BOTTOM COWL | 29 | 21 |
| 77860 | RING, RETAINING - ROPE | | | 10-35400 | SCREW, STATOR TO END | | |
| | GUIDE INSERT | 3 | 15A | | CAP (3/8") | 9 | 3 |
| 77997A1 | RETAINER ASSEMBLY | 5 | 46 | 10-36154 | SCREW, CLAMP PLATE | | |
| 77998 | HANDLE, STARTER CABLE | 5 | 45 | | ADJUSTING | 33 | 22 |
| 78033 | COVER, INTAKE | 21 | 25 | 10-37923 | SCREW, ADAPTOR TO | | |
| 78034 | PLATE, BAFFLE - EXHAUST | | | | BOTTOM COWL (1 1/4") | 15 | 10 |
| | MANIFOLD | 21 | 33 | 10-38111 | SCREW, BOTTOM COWL TO | | |
| 78035 | GASKET, CYLINDER BLOCK | | | | DRIVE SHAFT HOUSING | 29 | 12 |
| | TO BAFFLE PLATE | 21 | 32 | 10-39149 | SCREW, SHIFT SHAFT | | |
| 78777A1 | STARTER HOUSING | | | | BUSHING | 37 | 19 |
| | ASSEMBLY | 3 | 14 | 10-39154 | SCREW, CONNECTING ROD | 25 | 2 |
| 78808 | LATCH, BODY- BOTTOM | | | 10-45218 | SCREW, GROUND LEAD TO | | |
| | COWL | 29 | 20 | | CYLINDER BLOCK | 9 | 20 |
| 78809 | LATCH, ARM- BOTTOM | | | 10-48408 | SCREW, RECTIFIER TO | | |
| | COWL | 29 | 18 | | MANIFOLD COVER (1/2") | 45 | 18 |
| 79300 | MOLDING, BOTTOM COWL | 29 | 2 | 10-48408 | SCREW, RETAINER TO | | |
| 10-20031 | SCREW, BATTERY CABLE | | | | BOTTOM COWL | 29 | 16 |
| | ATACHING (7/8") | 45 | 14 | 10-54467 | SCREW, ADJ. - THROTTLE | | |
| 10-20646 | SCREW, TERMINAL BLOCK | | | | CONTROL (1 1/4") | 21 | 5 |
| | TO STATOR (5/8") | 9 | 8 | 10-55511 | SCREW, STARTER MOTOR | | |
| 10-20653 | SCREW, LIMITER | | | | TO CYLINDER BLOCK | 45 | 2 |
| | FOLLOWER TO BOTTOM | | | 10-56781 | SCREW, MAIN BEARING | | |
| | COWL | 19 | 5 | | CLAMPING | 23 | 6 |
| 10-20847 | SCREW, THROTTLE LEVER | | | 10-62233 | SCREW, DETENT SPRING | | |
| | ATTACHING | 11 | 38 | | TO STEERING ARM | | |
| 10-22483 | SCREW, LATCH ANCHOR | | | | BRACKET | 27 | 17 |
| | TO BOTTOM COWL | 29 | 8 | 10-63311 | SCREW, TILT STOP LEVER | 33 | 25 |

PARTS INDEX

| Part Number | Description | Pg. | Ref. No. | Part Number | Description | Pg. | Ref. No. |
|-------------|---|-----|----------|-------------|---|-----|----------|
| 10-64074 | SCREW, STEERING HANDLE TO ARM BRACKET (5/8") | 27 | 12 | 11-29598 | NUT, CLAMP BRACKET STUD | 35 | 13 |
| 10-64652 | SCREW, TRIM COVER TO BOTTOM COWL (1/2") | 31 | 6 | 11-34863 | NUT, DRIVE SHAFT HOUSING STUD (3/8 - 24) | 31 | 3 |
| 10-65414 | SCREW, CAM RETAINER TO DRIVE SHAFT HOUSING | 31 | 22 | 11-35814 | NUT, GEAR HOUSING TO DRIVE SHAFT HOUSING STUD | 31 | 4 |
| 10-66707 | SCREW, STATOR TO END CAP (7/8") | 9 | 2 | 11-35888 | NUT, TILT STOP LEVER SCREW | 33 | 27 |
| 10-67982 | BOLT, CLAMP BRACKET TO BOAT | 35 | 16 | 11-35888 | NUT, WATER PUMP HOSUING AND COVER STUDS | 39 | 42 |
| 10-69022 | SCREW, SCREEEN TO CARBURETOR | 15 | 12 | 11-39305 | NUT, SHIFT HANDLE TO SHIFT CONTROL SHAFT | 17 | 3 |
| 10-69022 | SCREW, SWITCH ATTACHING (1/2") | 9 | 17 | 11-45076 | NUT, CHOKE CABLE STUD | 15 | 20 |
| 10-71056 | SCREW, REVERSE STOP TO SWIVEL BRACKET | 33 | 30 | 11-45076 | NUT, IGNITION COIL TERMINAL | 7 | 7 |
| 10-72074 | SCREW, COIL COVER TO REAR SUPPORT BRACKET (4 5/8") | 7 | 9 | 11-45076 | NUT, RECTIFIER TERMINAL | 45 | 20 |
| 10-72169 | SCREW, LOWER MOUNT COVER TO MOUNT (7/16") | 31 | 20 | 11-45076 | NUT, VOLTAGE REGULATOR TERMINAL | 45 | 25 |
| 10-72862 | SCREW, STARTER HOUSING TO CRANKCASE (1") | 3 | 17 | 11-46438 | NUT, TERMINAL BLOCK SCREW | 9 | 9 |
| 10-73280 | SCREW, CRANKCASE TO CYLINDER BLOCK (1 1/2") | 21 | 13 | 11-46887 | NUT, CARBURETOR ATTACHING | 15 | 21 |
| 10-73643 | SCREW, THROTTLE CONTROL HOUSING | 19 | 3 | 11-46887 | NUT, COWL CATCH TO TOP COWL | 3 | 13 |
| 10-73696 | SCREW, LIGHTING STATOR ATTACHING (1 5/8") | 45 | 16 | 11-56041 | NUT, TILT TUBE FASTENING | 35 | 9 |
| 10-74841 | SCREW, VOLTAGE REGULATOR TO MANIFOLD COVER (1") - BELGIUM | 45 | 23 | 11-56374 | NUT, CLAMP BRACKET SCREW | 35 | 18 |
| 10-76611 | SCREW, UPPER BEARING HOUSING (1/2") | 21 | 23 | 11-64075 | NUT, PROPELLER | 43 | 70 |
| 10-76621 | SCREW, CRANKCASE TO CYLINDER BLOCK | 21 | 12 | 11-65110 | NUT, PUSH - LINK TO TRIGGER HOUSING | 9 | 15 |
| 10-76630 | SCREW, CYL. BLOCK COVER TO CYLINDER BLOCK (1") | 21 | 30 | 11-65517 | NUT, SPEED - FRONT COVER TO COWL | 3 | 8 |
| 10-76804 | SCREW, THUMB SCREW | 35 | 4 | 11-68219 | NUT, THROTTLE CONTROL ADJUSTING SCREW | 21 | 6 |
| 10-77190A3 | THUMB SCREW ASSEMBLY | 35 | 3 | 11-69844 | NUT, STOP SWITCH -MANUAL | 29 | 25 |
| 10-78038 | SCREW, CO-PILOT DISC TO SADDLE | 33 | 18 | 11-73710 | NUT, CHOKE CABLE TO BOTTOM COWL | 15 | 14 |
| 10-78038 | SCREW, STEERING ARM BRACKET TO SADDLE | 27 | 19 | 11-74394 | NUT, STARTING SWITCH | 45 | 9 |
| 11-20061 | NUT, CONNECTING ROD SCREW | 25 | 4 | 12-20260 | WASHER, GREASE FILLER HOLE SCREW | 37 | 11 |
| 11-20110 | NUT, COIL COVER SCREW | 7 | 10 | 12-20260 | WASHER, SEALING-FLUSH SCREW | 31 | 10 |
| 11-20166 | NUT, SHEAVE SHAFT (LEFT HAND THREAD) | 3 | 23 | 12-20262 | WASHER, GREASE VENT HOLE SCREW | 37 | 12 |
| 11-20361 | NUT, SECTOR GEAR TO SHIFT CONTROL SHAFT | 17 | 10 | 12-20533 | WASHER, WATER PUMP HOUSING AND COVER STUDS | 39 | 41 |
| 11-20696 | NUT, FLYWHEEL | 7 | 4 | 12-22887 | WASHER, CABLE PULLEY SCREW | 3 | 20 |
| 11-24652 | NUT, DRIVE SHAFT HOUSING TO POWERHEAD STUDS | 31 | 12 | 12-24676 | WASHER, NEUTRAL SPEED LIMITER STOP SCREW | 19 | 10 |
| | | | | 12-29245 | WASHER, SHIFT CONTROL SHAFT | 17 | 2 |
| | | | | 12-29245 | WASHER, SHIFT CONTROL SHAFT | 17 | 9 |
| | | | | 12-30516 | WASHER, STARTING SWITCH | 45 | 8 |

PARTS INDEX

| Part Number | Description | Pg. | Ref. No. | Part Number | Description | Pg. | Ref. No. |
|-------------|---|-----|----------|-------------|--|-----|----------|
| 12-35462 | WASHER, CLAMP PLATE ADJUSTING SCREW | 33 | 23 | 14-20165 | TAB WASHER, SHEAVE SHAFT NUT | 3 | 22 |
| 12-35559 | WASHER, SHEAVE SHAFT RETAINER | 3 | 40 | 14-30377 | TAB WASHER, PINION GEAR TO DRIVE SHAFT SCREW | 37 | 21 |
| 12-36245 | WASHER, FLYWHEEL NUT . | 7 | 3 | 14-78102 | TAB WASHER, UPPER BEARING HOUSING SCREW | 21 | 23A |
| 12-36554 | WASHER, NYLON - WATER PUMP COVER | 39 | 39 | 15-30522A1 | SHIM ASSEMBLY, BALL BEARING TO HOUSING (.002-3-5-10) | 41 | 49 |
| 12-36554 | WASHER, NYLON- WATER OUTLET TUBE | 29 | 10 | 15-30527A1 | SHIM ASSEMBLY, BALL BEARING TO GEAR HOUSING | 37 | 24 |
| 12-36555 | WASHER, NYLON - INTAKE TUBE SEAL | 37 | 7 | 15-30527A1 | SHIM ASSEMBLY, BALL BEARING TO GEAR HOUSING | 37 | 27 |
| 12-38753 | WASHER, SPEED LIMITER FOLLOWER SCREW | 19 | 6 | 15-30532A1 | SHIM ASSEMBLY, THRUST WASHER TO HOUSING . . | 41 | 60 |
| 12-56681 | WASHER, CHOKE CABLE STUD | 15 | 17 | 15-31412A1 | SHIM, UPPER HOUSING TO CYLINDER BLOCK | 21 | 17 |
| 12-56681 | WASHER, SWITCH BOX ATTACHING SCREW | 9 | 18 | 15-48002015 | SHIM, STEERING HANDLE PIVOT TO BRACKET (.015) | 27 | 11 |
| 12-57427 | WASHER, TOP COWL CATCH (UPPER) | 3 | 11A | 15-64653A1 | SHIM ASSEMBLY, GEAR AND SHAFT (LOWER) . . . | 19 | 12 |
| 12-62252 | WASHER, THROTTLE HANDLE TO STEERING ARM | 27 | 6 | 16-58136 | STUD, WATER PUMP HOUSING TO GEAR HOUSING | 37 | 3 |
| 12-65567 | WASHER, TOP COWL CATCH (LOWER) | 3 | 11 | 16-58138 | STUD, GEAR HOUSING TO DRIVE SHAFT HOUSING . | 37 | 2 |
| 12-65967 | WASHER, NEEDLE BEARING RETAINING | 25 | 5 | 16-66357 | STUD, CARBURETOR MOUNTING | 21 | 3 |
| 12-67983 | WASHER, CLAMP BRACKET SCREW | 35 | 17 | 16-66373 | STUD, DRIVE SHAFT HOUSING TO GEAR HOUSING | 31 | 2 |
| 12-71055 | WASHER, REVERSE STOP SCREW | 33 | 32 | 16-69036 | STUD, CHOKE CABLE TO CARBURETOR | 15 | 16 |
| 12-71421 | WASHER, TILT TUBE - CLAMP TO SWIVEL BRACKET | 35 | 5 | 16-71417 | STUD, CLAMP BRACKET . . | 35 | 11 |
| 12-73719 | WASHER, THUMB SCREW . | 35 | 4A | 16-72809 | STUD, BLOCK AND CRANKCASE TO DRIVE SHAFT HOUSING | 21 | 2 |
| 12-79552 | WASHER, PROPELLER SHAFT | 43 | -- | 17-20032 | PIN, DOWEL - LOCATING . . | 37 | 5 |
| 13-20160 | WASHER, WAVE - RETAINER TENSION | 3 | 41 | 17-20032 | PIN, DOWEL - MAIN BEARING TO BLOCK | 23 | 7 |
| 13-26992 | LOCKWASHER, CLAMP BRACKET STUD | 35 | 12 | 17-20032 | PIN, DOWEL- MAIN BEARING | 23 | 5 |
| 13-26992 | LOCKWASHER, LATCH ANCHOR SCREW | 29 | 9 | 17-22896 | PIN, RETAINER - STARTER CABLE | 3 | 28 |
| 13-26992 | LOCKWASHER, REVERSE STOP SCREW | 33 | 31 | 17-25319 | ROLL PIN, SPRING GUIDE . | 33 | 13 |
| 13-26992 | LOCKWASHER,BOTTOM COWL SCREW | 29 | 13 | 17-25905 | PIN, SHIFT LEVER TO SHIFT CONTROL SHAFT | 17 | 6 |
| 13-26993 | LOCKWASHER, STARTER MOTOR SCREW | 45 | 3 | 17-27088 | PIN, BALL GEAR TO THROTTLE SHAFT | 27 | 9 |
| 13-26996 | LOCKWASHER, IGNITION COIL TERMINAL | 7 | 6 | 17-30535 | PIN, CROSS - RATCHET TO PROPELLER SHAFT | 41 | 55 |
| 13-31030 | WASHER, WAVE - LEVER ANCHOR SCREW | 33 | 26 | 17-38489 | ROLL PIN, INTERLOCK SHAFT | 3 | 32 |
| 13-36206 | WASHER, WAVE - STARTER PAWL | 3 | 35 | 17-46152 | PIN, STEERING HANDLE . . . | 27 | 5 |
| 13-63631 | WASHER, WAVE - TROLL BRACKET LEVER | 33 | 15 | 17-46912 | PIN, DOWEL - CRANKCASE TO CYLINDER BLOCK . . . | 21 | 4 |
| 13-69845 | LOCKWASHER,STOP SWITCH | 29 | 24 | | | | |

PARTS INDEX

| Part Number | Description | Pg. | Ref. No. | Part Number | Description | Pg. | Ref. No. |
|-------------|---|-----|----------|-------------|--|-----|----------|
| 17-71418A2 | TILT LOCK PIN ASSEMBLY . | 35 | 15 | 24-74347 | SPRING, TORSION - INTERLOCK SHAFT | 3 | 34 |
| 17-72856 | PIN, TOP COWL CATCH . . . | 3 | 10 | 24-76298 | SPRING, COMPRESSION - CAM FOLLOWER | 41 | 48 |
| 17-76207 | PIN, ROLL | 19 | 14 | 24-78810 | SPRING, CABLE TO ARM LATCH | 29 | 17 |
| 17-77564 | PIN, BALL GEAR TO UNIVERSAL JOINT | 27 | 15 | 24-79351 | SPRING, COMPRESSION - COWL CATCH | 3 | 12 |
| 18-45882 | COTTER PIN, REVERSE LOCK LEVER TO ROD . . . | 33 | 7 | 25-20415 | "O" RING, ADAPTOR STEM . | 15 | 7 |
| 19-39333 | PLUG, TILT TUBE | 35 | 7 | 25-20863 | "O" RING, UPPER BEARING HOUSING | 21 | 22 |
| 21-77207 | CHECK VALVE, BLEED - CRANKCASE (BOTTOM) . | 21 | 10 | 25-26802 | "O" RING, SHIFT SHAFT BUSHING | 37 | 17 |
| 22-25885 | ELBOW, TELL TALE - CYLINDER BLOCK | 21 | 11 | 25-29439 | "O" RING, WATER PUMP HOUSING | 37 | 29 |
| 22-52644 | PLUG, CYLINDER BLOCK COVER | 21 | 28 | 25-30526 | RING, RUBBER - CENTRIFUGAL SLINGER (DRIVE SHAFT) | 39 | 43 |
| 22-65857 | FITTING, BLEED DRAIN - CYLINDER BLOCK (TOP) . | 21 | 7 | 25-30529 | "O" RING, BEARING CARRIER | 41 | 61 |
| 22-73705 | FITTING, FUEL LINE TO ADAPTOR | 15 | 4 | 25-39086 | GROMMET, COWL LATCH - TOP COWL | 3 | 6 |
| 22-74036 | FITTING, GREASE - SWIVEL BRACKET | 33 | 2 | 25-74444 | GROMMET, BATTERY CABLE | 45 | 12 |
| 23-26841 | BUSHING, NYLON - REVERSE LOCK LEVER ROD | 33 | 5 | 26-30696 | OIL SEAL, SHIFT SHAFT BUSHING | 37 | 18 |
| 23-26856 | BUSHING, NYLON - INTERLOCK SHAFT | 3 | 33 | 26-30900 | OIL SEAL, WATER PUMP HOUSING | 37 | 30 |
| 23-27132 | BUSHING, NYLON - UPPER SHIFT SHAFT | 17 | 14 | 26-30913 | OIL SEAL, WATER PUMP COVER | 39 | 40 |
| 23-28912 | BUSHING, STARTER SPRING GUIDE | 3 | 26 | 26-33613 | SEAL, RUBBER - WATER INTAKE TUBE | 37 | 6 |
| 23-28919 | BUSHING, NYLON - SHEAVE SHAFT SPACER | 3 | 37 | 26-33613 | SEAL, WATER INTAKE TUBE | 39 | 31 |
| 23-30676A1 | BUSHING ASSEMBLY, SHIFT SHAFT | 37 | 16 | 26-36556 | SEAL, RUBBER - WATER OUTLET TUBE | 29 | 11 |
| 23-30977 | SPACER, CABLE PULLEY . . | 3 | 21 | 26-36558 | SEAL, WATER PUMP COVER | 39 | 38 |
| 23-31792 | SLEEVE, GUIDE - WATER INLET TUBE | 39 | 44 | 26-66022 | OIL SEAL, BEARING CARRIER | 41 | 64 |
| 23-61005 | SPACER, SHEAVE SHAFT . | 3 | 38 | 26-66301 | OIL SEAL, CRANKCASE (LOWER) | 21 | 38 |
| 23-62769 | SPACER, RECTIFIER SCREW | 45 | 19 | 26-66301 | OIL SEAL, UPPER BEARING HOUSING | 21 | 21 |
| 23-62769 | SPACER, VOLTAGE REGULATOR SCREW . . . | 45 | 24 | 26-72793 | SEAL, CRANKSHAFT | 23 | 3 |
| 23-63320 | BUSHING, SPEED LIMITER FOLLOWER SCREW | 19 | 7 | 27-39050 | GASKET, ADAPTOR PLATE TO DRIVE SHAFT HOUSING | 31 | 11 |
| 23-64028 | BUSHING, SWIVEL BRACKET | 33 | 4 | 27-39050 | GASKET, BOTTOM COWL TO DRIVE SHAFT HOUSING | 29 | 22 |
| 23-65439 | SPACER, PROPELLER SHAFT | 43 | 69 | 27-45748 | GASKET, POWERHEAD TO ADAPTOR PLATE | 29 | 14 |
| 23-66375 | BUSHING, NYLON - SHIFT CONTROL SHAFT | 17 | 4 | 27-63309 | GASKET, CARBURETOR FLANGE | 13 | 44 |
| 24-23067 | SPRING, ADAPTOR STEM . | 15 | 8 | 27-66358A74 | GASKET SET (MOTOR OVERHAUL) | 1 | - |
| 24-29340A1 | SPRING, STARTER REWIND | 3 | 25 | 27-78032 | GASKET, INTAKE COVER . . | 21 | 24 |
| 24-39042 | SPRING, NEUTRAL SPEED LIMITER FOLLOWER | 19 | 6A | 27-78035 | GASKET, BAFFLE PLATE . . | 21 | 34 |
| 24-39627 | SPRING, DETENT - SHIFT CONTROL LEVER | 17 | 11 | 27-78087 | GASKET, CYLINDER BLOCK COVER | 21 | 29 |
| 24-62143 | SPRING, TILT LOCK PIN . . . | 35 | 14 | 28-20094 | KEY, FLYWHEEL DRIVE . . . | 7 | 2 |
| 24-63630 | SPRING, EXTENSION - TROLL BRACKET | 33 | 11 | | | | |
| 24-72847 | SPRING, DETENT-STEERING HANDLE | 27 | 18 | | | | |

PARTS INDEX

| Part Number | Description | Pg. | Ref. No. | Part Number | Description | Pg. | Ref. No. |
|-------------|--|-----|----------|-------------|---|-----|----------|
| 28-56655 | KEY, IMPELLER DRIVE | 39 | 34 | 45-74851 | DRIVE SHAFT (SHORT SHAFT) | 37 | 23 |
| 29-26815 | BEARING, NEEDLE - CRANKPIN | 25 | 3 | 46-46893A2 | RESISTANT WATER PUMP KIT | 1 | - |
| 29-31505 | BEARING, NEEDLE - PISTON PIN | 25 | 6 | 46-70941A1 | WATER PUMP HOUSING ASSEMBLY | 37 | 28 |
| 29-52168 | PIN, ARM LOCATING | 29 | 19 | 47-65957 | IMPELLER, WATER PUMP | 39 | 35 |
| 30-20861 | BEARING, BALL - CRANKCASE (LOWER) | 21 | 37 | 48-47670A1 | PROPELLER ASS'Y, 8 3/4" DIA., 7" PITCH, 3 BLADES | 41 | 68 |
| 30-20861 | BEARING, BALL - UPPER BEARING HOUSING | 21 | 19 | 48-47922A1 | PROPELLER ASS'Y, 9" DIA., 9" PITCH, 2 BLADES | 41 | 68 |
| 30-21889 | BEARING, BALL - FORWARD GEAR | 41 | 50 | 48-47926A1 | PROPELLER ASS'Y, 9"DIA., 10" PITCH, 2 BLADES | 41 | 68 |
| 30-21889 | BEARING, BALL - REVERSE GEAR | 41 | 59 | 48-65012A1 | PROPELLER ASS'Y, 8 3/4" DIA., 7" PITCH, 3 BLADES | 43 | 68 |
| 30-70944 | BEARING, BALL - DRIVE SHAFT | 37 | 25 | 48-77968A1 | PROPELLER ASSEMBLY (SHIPPED WITH ENGINE FROM FACTORY) | 41 | 68 |
| 31-22458 | BEARING, ROLLER - BEARING CARRIER | 41 | 63 | 50-61575A1 | STARTER CABLE ASSEMBLY | 5 | 44 |
| 31-22458 | BEARING, ROLLER - FORWARD GEAR | 41 | 52 | 50-74346A1 | STARTER SHEAVE ASSEMBLY | 3 | 27 |
| 31-22756 | BEARING, ROLLER - DRIVE SHAFT | 37 | 4 | 50-78011 | STARTER MOTOR | 45 | 1 |
| 31-31410 | BEARING, ROLLER - UPPER BEARING HOUSING | 21 | 20 | 52-63314 | RATCHET, SLIDING CLUTCH | 41 | 53 |
| 32-34293 | TUBE, WATER INTAKE | 39 | 32 | 53-22899 | RING, RETAINING - SHIFT SHAFT | 37 | 15 |
| 32-34395A1 | HOSE, TELL TALE (9 1/2") | 31 | 7 | 53-26406 | RING, RETAINING-UPPER AND LWER MOUNT | 31 | 18 |
| 32-39061 | TUBE, WATER OUTLET | 31 | 8 | 53-30523 | RING, RETIANING - BALL BEARING TO DRIVE SHAFT | 37 | 26 |
| 32-39062 | TUBE, WATER OUTLET | 31 | 8 | 53-32449 | RING, RETAINING - CROSS PIN | 41 | 54 |
| 32-54936 | HOSE, BLEED DRAIN (10 1/2") | 21 | 8 | 54-23568 | CLIP, TRIGGER LEADS | 15 | 18 |
| 32-70432 | FUEL LINE, ADAPTOR TO CARBURETOR | 15 | 2 | 54-30954 | CLIP, SAFETY CHAIN - TILT TUBE | 35 | 8 |
| 33-58194 | SPARK PLUG (AC#V40FFK) | 7 | 14 | 54-59538 | CLIP, COIL RETAINING | 9 | 5 |
| 34-20053 | REED STOP, MAIN BEARING REED VALVES | 23 | 9 | 54-65927 | CLIP, COIL RETAINING | 9 | 6 |
| 34-31942A1 | REED SET, MATCHED- MAIN BEARING | 23 | 8 | 54-68424 | CLAMP, FUEL LINE ATTACHING | 15 | 3 |
| 35-33425 | SCREEN, WATER INTAKE | 37 | 8 | 84-61393A6 | WIRE ASSEMBLY, RECTIFIER TO STARTING SWITCH | 45 | 21 |
| 37-48602A78 | DECAL SET | 1 | - | 84-63212A2 | LEAD ASSEMBLY, HIGH TENSION | 7 | 11 |
| 39-21665A12 | RING, PISTON | 25 | 9 | 84-65017A4 | HARNESS ASSEMBLY, LIGHTING (EXTERNAL) | 45 | 29 |
| 40-21666 | LOCK RING, PISTON PIN | 25 | 8 | 84-73573 | CABLE, BATTERY | 45 | 11 |
| 43-48577 | FORWARD GEAR | 41 | 51 | 84-74725A1 | HARNESS ASSEMBLY, VOLTAGE REGULATOR (BLACK/RED) | 45 | 26 |
| 43-48579 | GEAR, PINION | 37 | 20 | 84-76741A1 | WIRE ASSEMBLY, STARTING SWITCH (YELLOW) | 45 | 6 |
| 43-60653 | GEAR, SECTOR - SHIFT SHAFT | 17 | 15 | 85-71006A1 | PROTECTOR ASSEMBLY, SPARK PLUG | 7 | 13 |
| 43-60852 | GEAR, BALL-THROTTLE SHAFT | 27 | 8 | 86-74474 | TERMINAL BLOCK, STATOR | 9 | 7 |
| 43-60852 | GEAR, BALL-UNIVERSAL JOINT | 27 | 14 | 87-69508A1 | STOP SWITCH ASSEMBLY | 29 | 23 |
| 43-60856 | GEAR, HORIZONTAL - THROTTLE CONTROL SOCKET | 19 | 1 | 87-73883 | SWITCH, STARTING | 45 | 7 |
| 43-60858 | GEAR, THROTTLE CONTROL | 19 | 11 | 90--79169 | MERC 110 PARTS LIST | 1 | - |
| 43-63316 | REVERSE GEAR | 41 | 57 | | | | |
| 43-66377 | GEAR, SECTOR - SHIFT CONTROL SHAFT | 17 | 8 | | | | |
| 44-75667A2 | SHAFT ASSEMBLY, PROPELLER | 41 | 56 | | | | |

PARTS INDEX

| Part Number | Description | Pg. | Ref. No. | Part Number | Description | Pg. | Ref. No. |
|-------------|---|-----|----------|--------------|---|-----|----------|
| 251-6105A1 | FLYWHEEL ASSEMBLY (ELECTRIC) | 7 | 1 | 1468-5570A3 | CLAMP BRAC KET ASSEMBLY (PORT) | 35 | 1 |
| 251-6105A3 | FLYWHEEL ASSEMBLY (BELGIUM) | 7 | 1 | 1471-6578A1 | SWIVEL BRACKET ASSEMBLY | 33 | 1 |
| 251-6194A1 | FLYWHEEL ASSEMBLY (MANUAL) | 7 | 1 | 1558-5946A3 | DRIVE SHAFT HOUSING ASSEMBLY(LONG SHAFT) | 31 | 1 |
| 332-2854 | NIPPLE, IGNITION COIL | 7 | 12 | 1559-6678A1 | SADDLE ASSEMBLY | 31 | 15 |
| 338-5286A6 | TRIGGER HOUSING ASSEMBLY | 9 | 11 | 1630-5908A5 | GEAR HOUSING ASS'Y | 37 | 1 |
| 339-5209A3 | STATOR ASSEMBLY | 9 | 1 | 1630-5908A5 | GEAR HOUSING ASS'Y - NOT MACHINED FOR ANODE KIT | 41 | 1 |
| 339-5287A4 | SWITCH BOX | 9 | 16 | 1630-5908A6 | GEAR HOUSING ASS'Y, COMP. (SHORT SHAFT) | 37 | - |
| 339-5748A2 | COIL ASSEMBLY, IGNITION | 7 | 5 | 1630-5908A6 | GEAR HOUSING ASS'Y, COMP. (SHORT SHAFT) | 41 | - |
| 339-6119A1 | COIL ASSEMBLY (5 1/2" AND 6 3/8" LEADS) | 9 | 4 | 1630-5908A7 | GEAR HOUSING ASS'Y, COMP. (LONG SHAFT) | 37 | - |
| 339-6120A1 | COIL ASSEMBLY (1 3/4" AND 3 1/2" LEADS) | 9 | 4 | 1630-5908A7 | GEAR HOUSING ASS'Y, COMP. (LONG SHAFT) | 41 | - |
| 421-5275 | CRANKSHAFT | 23 | 1 | 1630-7360A11 | GEAR HOUSING ASS'Y | 37 | 1 |
| 532-1938A6 | MAIN BEARING ASSEMBLY (VALVE TYPE) | 23 | 4 | 1630-7360A11 | GEAR HOUSING ASS'Y - MACHINED FOR ANODE KIT | 41 | 1 |
| 608-4246A1 | CONNECTING ROD ASSEMBLY | 25 | 1 | 1630-7360A12 | GEAR HOSUING ASS'Y, COMP. (SHORT SHAFT) | 41 | - |
| 719-3374A2 | PISTON AND PISTON PIN ASSEMBLY | 25 | 7 | 1630-7360A13 | GEAR HOUSING ASS"Y, COMOP. (LONG SHAFT) | 37 | - |
| 837-6543A5 | CYLINDER BLOCK AND CRANKCASE ASS'Y | 21 | 1 | 1630-7360A13 | GEAR HOUSING ASS'Y, COMP. (LONG SHAFT) | 41 | - |
| 1019-5314A1 | COVER ASSEMBLY, CYLINDER BLOCK | 21 | 27 | 2159-6681A2 | COWL, BOTTOM | 29 | 1 |
| 1164-6413A1 | BEARING HOUSING ASSEMBLY, UPPER | 21 | 18 | 2160-6108A6 | TOP COWL ASSEMBLY | 3 | 1 |
| 1364-6648 | CARBURETOR ASSEMBLY, COMPLETE | 11 | 1 | 4556-5945A2 | DRIVE SHAFT HOUSING ASSEMBLY(SHORT SHAFT) | 31 | 1 |
| 1364-6648 | CARBURETOR ASSEMBLY, COMPLETE | 15 | 1 | | | | |
| 1399-1896 | JET, MAIN FUEL (.041) | 11 | 15 | | | | |
| 1399-4236 | COVER ASSEMBLY, STRAINER (INLET) | 11 | 31 | | | | |
| 1399-5126 | FLOAT | 11 | 7 | | | | |
| 1399-5127 | FUEL BOWL | 11 | 9 | | | | |
| 1399-5128 | SCREW, FUEL BOWL TO CARBURETOR | 11 | 11 | | | | |
| 1399-5129 | BODY FUEL PUMP | 11 | 24 | | | | |
| 1399-5131 | BODY, STRAINER | 11 | 27 | | | | |
| 1399-5132 | SCREW, STRAINER BODY TO CARBURETOR | 11 | 28 | | | | |
| 1399-5133 | THROTTLE SHAFT | 11 | 36 | | | | |
| 1399-5135 | GASKET SET | 13 | -- | | | | |
| 1399-5137 | DIAPHRAGM AND GASKET KIT | 13 | -- | | | | |
| 1399-5758 | SCREEN, STRAINER | 11 | 29 | | | | |
| 1399-5759 | THROTTLE SHUTTER | 11 | 42 | | | | |
| 1399-5800 | REPAIR PARTS KIT | 13 | -- | | | | |
| 1399-5827 | CHOKE SHAFT | 11 | 34 | | | | |
| 1399-6141 | INLET NEEDLE AND SPRING | 11 | 13 | | | | |
| 1399-7274 | CHOKE SHUTTER | 11 | 19 | | | | |
| 1467-5571A2 | CLAMP BRACKET ASSEMBLY (STARBOARD) | 35 | 2 | | | | |
| 1467-5571A3 | CLAMP BRACKET ASSEMBLY (STARBOARD) | 35 | 2 | | | | |
| 1468-5570A2 | CLAMP BRACKET ASSEMBLY (PORT) | 35 | 1 | | | | |