

Circulate to: Sales Manager Accounting Service Manager Technician Parts Manager

Fuel Supply Module (FSM) Float Switch Replacement - 200/225/250/275 Verado

Models Affected

Models Covered	Serial Number Or Year
200/225/250/275 Verado	Model Year 2005
	Serial Number 1B152085 through 1B206576

Situation

Mercury Marine has received reports of Fuel Supply Module (FSM) float switch failures on the above identified models. The potting material used to seal the float switch wiring can deteriorate when it comes into contact with some types of gasoline. Pieces of the potting material can be released into the FSM and may become lodged between the float switch shaft and the magnetic float, causing the float to stick. Should the float stick, the electric fuel lift pump will be turned off and the engine will run out of fuel. Mercury Marine has changed the float switch potting material to correct this issue. The above identified models will need to have the float switch replaced. This service will be done at no cost to the customer.

Part Identification

FUEL SUPPLY MODULE (FSM)

Prior to the removal/disassembly of the Fuel Supply Module, inspect the date code printed on the FSM tank. If the date code falls outside of the affected range, the FSM has been replaced and no further repair is necessary.

THE INFORMATION IN THIS DOCUMENT IS CONFIDENTIAL AND PROTECTED BY COPYRIGHT AND IS THE PROPERTY OF MERCURY MARINE.

This document is provided for the sole and exclusive use of the original recipient as prescribed by Mercury Marine and may not be distributed or copied, digitally or otherwise, without the prior written consent of Mercury Marine.

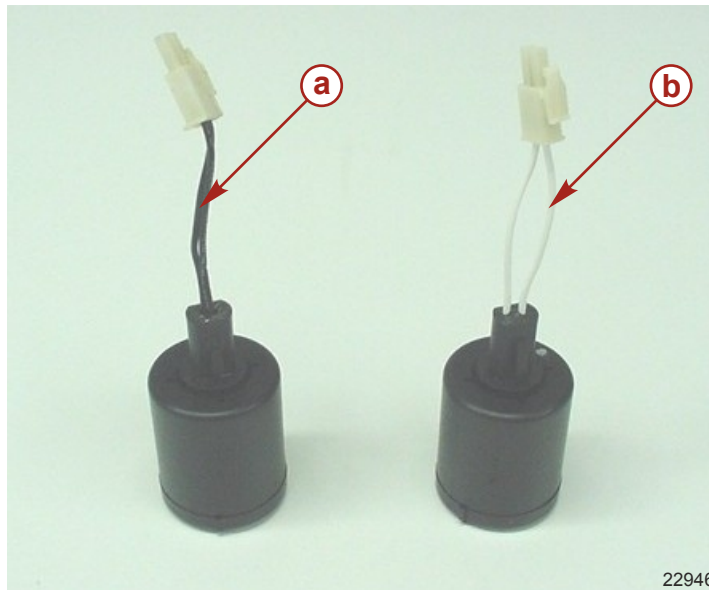
NOTE: Affected FSM date codes 5001 through 5153 must have their float switches inspected and/or replaced.



Data Code KC50590714	
5 = 2005	059 = 59th day of the year

FLOAT SWITCH

If the FSM is disassembled and the float switch has white wire leads, the float switch has been replaced and is a good serviceable part. No replacement is needed.



a - Black wires: Replace float switch **b** - White wires: Good serviceable float switch. No replacement is needed.

Correction

IMPORTANT: Replace the Fuel Supply Module (FSM) float switch, following the procedures and cautions as outlined in the 200/225/250/275 Verado Service Manual.

THE INFORMATION IN THIS DOCUMENT IS CONFIDENTIAL AND PROTECTED BY COPYRIGHT AND IS THE PROPERTY OF MERCURY MARINE.

This document is provided for the sole and exclusive use of the original recipient as prescribed by Mercury Marine and may not be distributed or copied, digitally or otherwise, without the prior written consent of Mercury Marine.

IMPORTANT: Thoroughly flush internal FSM tank compartment/components with solvent and dry using low pressure compressed air. Make sure all debris has been removed from FSM components prior to reassembly.

1. Remove and disassemble Fuel Supply Module (FSM).
2. Drain, clean, and inspect all FSM components. Ensure that all debris has been removed. Verify that inlet screen on high pressure pump is free of debris.
3. Install a new float switch and reassemble FSM using a new top seal for the cover.
4. Reinstall FSM and reassemble outboard.

NOTE: For initial start of a new engine or for an engine that ran out of fuel or was drained of fuel, the fuel system should be filled as follows: Turn the ignition key switch to the "ON" position for approximately one minute. This operates the fuel lift pump. Turn the ignition key switch back to the "OFF" position and then return the ignition key switch to the "ON" position again for an additional minute. Turn the ignition key switch back to the "OFF" position. The filling of the fuel system is complete.

Parts Required

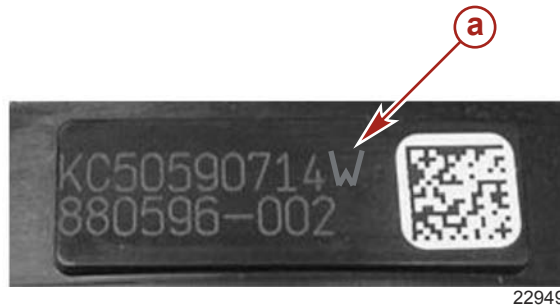
Qty.	Description	Part Number
1	Float Switch	880596522
1	Top Seal, Fuel Supply Module (FSM)	26-880596502

Repair Identification

After the FSM float switch has been inspected and/or replaced, the FSM repair should be identified as follows:

1. Use an awl to scribe a W into the FSM tank following the date code.

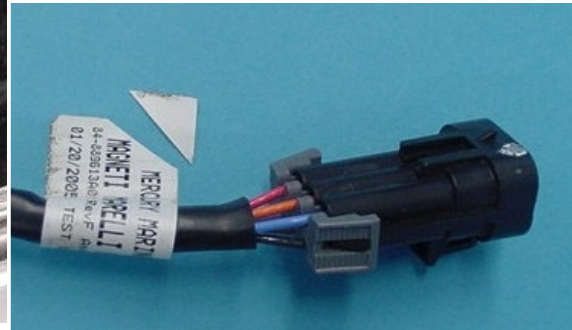
NOTE: W = Known good float switch (White wires)



THE INFORMATION IN THIS DOCUMENT IS CONFIDENTIAL AND PROTECTED BY COPYRIGHT AND IS THE PROPERTY OF MERCURY MARINE.

This document is provided for the sole and exclusive use of the original recipient as prescribed by Mercury Marine and may not be distributed or copied, digitally or otherwise, without the prior written consent of Mercury Marine.

2. Cut off the non-text corner of the part number label of the fuel supply module harness. The label is secured around the FSM wiring harness and is routed just below the electrical box assembly. This identification marking is easily seen with the top/rear cowl removed.



22950

Dealer Parts Inventory

USA CUSTOMERS

Return any unused (original packaged) p/n 880596504 FSM Float Switches and/or p/n 880596T02 Fuel Supply Modules (with affected date codes 5001 through 5153) in your inventory using the Mercury Precision Parts **UNDER 30 DAYS RETURN PROGRAM**. You may use the form on the back of any parts and accessory packing list. Please note on the form that the return is part of Service Bulletin 2006-05. All returns must be sent freight prepaid to:

Mercury Marine
Attn.: Return Goods
W6250-20C Pioneer Road
Fond du Lac, WI 54935

NON-USA CUSTOMERS

Return any unused (original packaged) p/n 880596504 FSM Float Switches and/or p/n 880596T02 Fuel Supply Modules (with affected date codes 5001 through 5153) in your inventory to the appropriate distribution center for credit. Follow the normal return parts procedure. Please reference Service Bulletin 2006-05.

Owner Notification

All registered owners within the affected serial number range will receive a letter from Mercury Marine. The letter will explain the situation and request that they contact their local dealer to set-up an appointment to have their repair performed.

Warranty

Mercury Marine will credit the dealer for the cost of parts and labor until May 30, 2009.

THE INFORMATION IN THIS DOCUMENT IS CONFIDENTIAL AND PROTECTED BY COPYRIGHT AND IS THE PROPERTY OF MERCURY MARINE.

This document is provided for the sole and exclusive use of the original recipient as prescribed by Mercury Marine and may not be distributed or copied, digitally or otherwise, without the prior written consent of Mercury Marine.

Complete a warranty claim listing:

- Outboard serial number
- Select Program #1-2006-005
- 1.3 hours labor
- Qty. 1 p/n 880596522 FSM Float Switch
- Qty. 1 p/n 26-880596502 FSM Top Seal
- Warranty Flat Rate Code: SB10 & SB03
- Part Code: 786
- Failure Code: 00

US & Canada:

Complete/process the claim via MercNET or return a warranty claim form.

International:

Follow instructions issued by Marine Power International office or by an authorized Marine Power Distributor.

THE INFORMATION IN THIS DOCUMENT IS CONFIDENTIAL AND PROTECTED BY COPYRIGHT AND IS THE PROPERTY OF MERCURY MARINE.

This document is provided for the sole and exclusive use of the original recipient as prescribed by Mercury Marine and may not be distributed or copied, digitally or otherwise, without the prior written consent of Mercury Marine.

Dear Mercury Marine Owner

Thank you for your purchase of a Mercury Outboard. We at Mercury Marine are dedicated to providing superior reliability and customer satisfaction. As part of our commitment to superior customer satisfaction, we have determined that it is necessary to replace the fuel supply module float switch on your engine to insure the durability of your Mercury Outboard.

What is the condition?

On a small number of engines, it is possible that the fuel supply module float switch may fail resulting in the engine running out of fuel. To eliminate the possibility of this occurring, Mercury Marine will replace the float switch (which has been redesigned to address this issue), and other related components at no charge to you.

What will Mercury Marine do?

Any authorized Mercury Marine dealer will inspect and if necessary replace your fuel supply module float switch at no charge to you.

What should you do?

Please contact your Mercury Outboard dealer to schedule an appointment to have the fuel supply module float switch replaced. Your dealer is able to determine how long the repair will take on your engine.

Please present this notice to your dealer when you bring your boat in for your service appointment.

What if you have other questions or if you no longer own this engine?

Please contact your Mercury Outboard dealer or call Mercury Outboard Customer Service at 1-920-929-5040 between 7:30 AM and 5:30 PM CST.

We have sent this notice in the interest of your continued satisfaction with our product, and we sincerely regret any inconvenience this may cause you.

Thank you for boating with Mercury Marine

Mercury Marine Service