

Circulate to: Sales Manager Accounting Service Manager Technician Parts Manager

Front Cowl Latch Replacement – 135/150/175 Verado & EU 135/150 Verado

Models Affected

Models Covered	Serial Number
135/150/175 Verado	1B290194 and Below
EU 135/150 Verado	0P437673 and Below

Situation

On affected outboards, the top cowl latch can be difficult to release when attempting to remove the top cowl. The corners formed by a machined groove in the latch hook can dig into the lower cowl latching surfaces and not allow the latch hook to release. Mercury Marine has changed the design of the front cowl latch hook to correct this issue. The new latch hook has a machined pocket which replaces the previous groove. This pocket feature eliminates the formed corners of the groove and allows the latch hook to disengage smoothly.

Correction

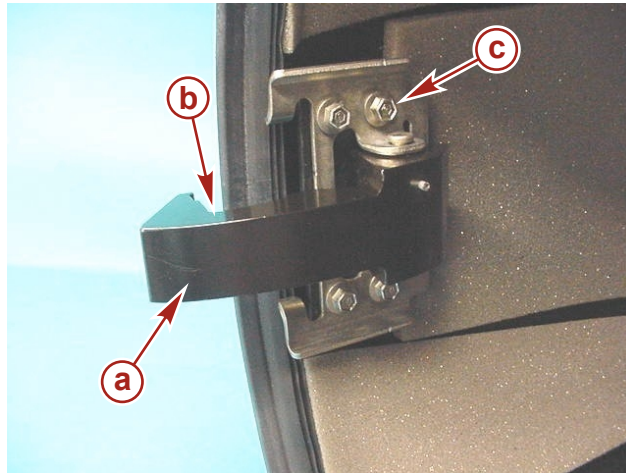
IMPORTANT: If the front cowl latch is difficult to release, raise and hold the rear of the top cowl approximately 10 cm (4 in.) off the lower cowling. Then, while forcing the top cowl forward to compress the cowl latch spring, lift the top cowl off in a single forward rotating motion.

1. Remove the top cowl.

THE INFORMATION IN THIS DOCUMENT IS CONFIDENTIAL AND PROTECTED BY COPYRIGHT AND IS THE PROPERTY OF MERCURY MARINE.

This document is provided for the sole and exclusive use of the original recipient as prescribed by Mercury Marine and may not be distributed or copied, digitally or otherwise, without the prior written consent of Mercury Marine.

2. Remove the four screws securing the front cowl latch assembly to the top cowl.

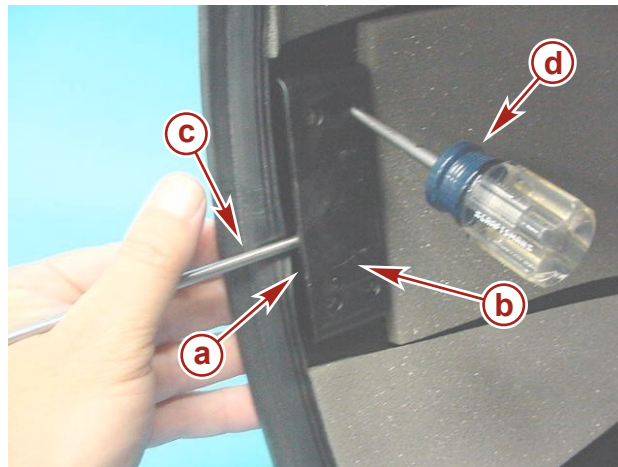


25378

Latch assembly groove

- a** - Front cowl latch assembly
- b** - Machined groove
- c** - Mounting screws (4)

3. Use a screwdriver to hold the front cowl latch mounting plate against the back side of the front cowl latch mounting bracket. Use an awl to align the threaded bolt holes in the mounting plate with the through holes in the mounting bracket.



25379

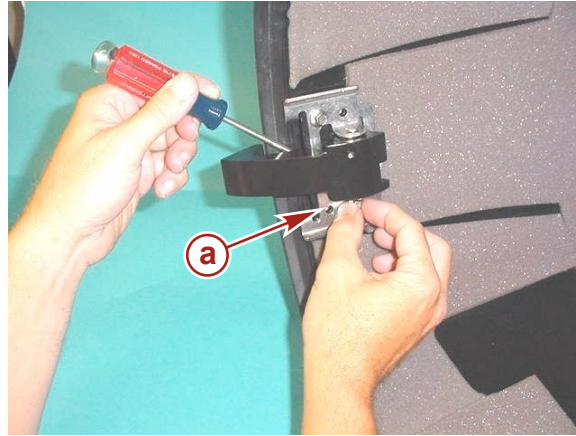
Mounting plate

- a** - Mounting plate (hidden behind mounting bracket)
- b** - Mounting bracket
- c** - Screwdriver
- d** - Awl

THE INFORMATION IN THIS DOCUMENT IS CONFIDENTIAL AND PROTECTED BY COPYRIGHT AND IS THE PROPERTY OF MERCURY MARINE.

This document is provided for the sole and exclusive use of the original recipient as prescribed by Mercury Marine and may not be distributed or copied, digitally or otherwise, without the prior written consent of Mercury Marine.

- Assemble the replacement front cowl latch into the top cowl. Hand start the four mounting screws. Do not tighten the screws at this time.

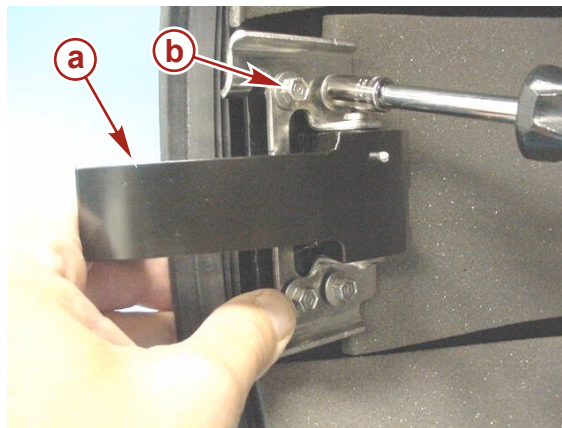


25380

Hand start mounting screws

a - Hand start mounting screws

- Push the cowl latch hook against the latch spring and tighten the latch assembly mounting screws.



25381

Latch assembly pocket

a - Latch hook

b - Mounting screws

Description	Nm	lb. in.	lb. ft.
Mounting screws	7	68	

- Make sure that the cowl latch hook moves freely and that it springs back into position.
- Reinstall top cowl.

Parts Required

Qty.	Description	Part Number
1	Front cowl latch	897437T02

THE INFORMATION IN THIS DOCUMENT IS CONFIDENTIAL AND PROTECTED BY COPYRIGHT AND IS THE PROPERTY OF MERCURY MARINE.

This document is provided for the sole and exclusive use of the original recipient as prescribed by Mercury Marine and may not be distributed or copied, digitally or otherwise, without the prior written consent of Mercury Marine.

Dealer Outboard Inventory

Affected outboards in dealer inventory should have the front cowl latches replaced prior to customer delivery.

Dealer Parts Inventory

No affected service replacement parts were released to dealers.

Warranty

Mercury Marine will credit the dealer for the cost of parts and labor. Complete a warranty claim listing:

- Outboard serial number
- One-half (0.5) hour labor
- Qty. 1 (P/N 897437T02) front cowl latch
- Warranty Flat Rate Code: CC26
- Part Code: 905
- Failure Code: 00

US AND CANADA

Complete/process the claim via MercNET or return a warranty claim form.

INTERNATIONAL

Follow instructions issued by Marine Power International office or by an authorized Marine Power Distributor.

THE INFORMATION IN THIS DOCUMENT IS CONFIDENTIAL AND PROTECTED BY COPYRIGHT AND IS THE PROPERTY OF MERCURY MARINE.

This document is provided for the sole and exclusive use of the original recipient as prescribed by Mercury Marine and may not be distributed or copied, digitally or otherwise, without the prior written consent of Mercury Marine.