

OEM No. 2004-04

Bulletin No. 2004-05

Circulate to:  Sales Manager  Accounting  Service Manager  Technician  Parts Manager

## 225 EFI Fourstroke Top Cowl

### Models Affected

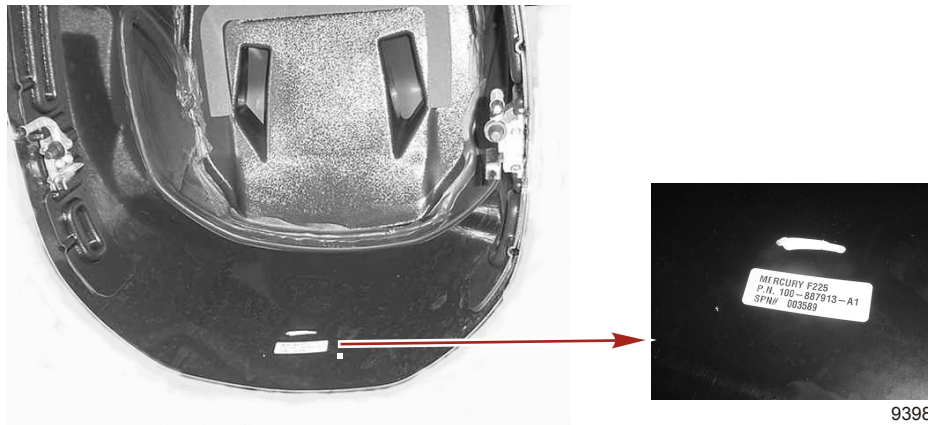
Models Covered	Serial Number Or Year
MERCURY 225 EFI Four Stroke Outboards	0T653945 through 0T933822

### Situation

Some 225 EFI Fourstroke outboards within the above serial range may have an issue with the adhesive bond between the air intake baffle and the cowl. This poor bond may allow water to enter the cowl and possibly contaminate components on the engine.

### Dealer Parts Inventory or Dealer Outboard Inventory

All cowls (887913T02) in service replacement stock have been reworked. Any replacement cowls in dealer inventory with a cowl number of 3005 or below need to be replaced per the instructions in this bulletin



### Correction

Remove the old cowl from the engine. Use a suitable saw to cut out a 6 inch x 6 inch section of cowl surrounding the white cowl serial number decal. Discard the remaining cowl and retain the small cut out with the cowl serial number for your warranty claim.

Install new cowl on engine. Be sure to inspect cowl for any types of damage that may have occurred during shipping.

THE INFORMATION IN THIS DOCUMENT IS CONFIDENTIAL AND PROTECTED BY COPYRIGHT AND IS THE PROPERTY OF MERCURY MARINE.

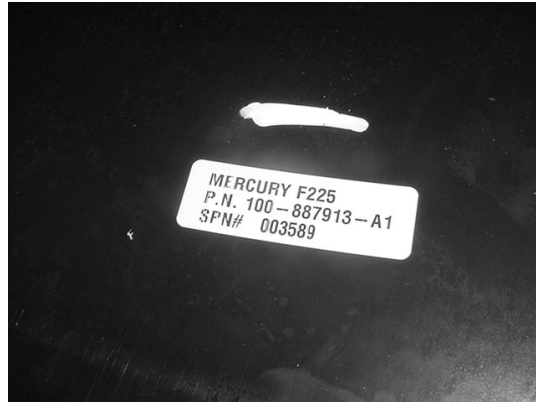
This document is provided for the sole and exclusive use of the original recipient as prescribed by Mercury Marine and may not be distributed or copied, digitally or otherwise, without the prior written consent of Mercury Marine.

## Parts Required

Qty.	Description	Part Number
1	Top Cowl	887913T02

## Repair Identification

All units reworked at the factory will be marked by a white paint mark above the cowl serial tag illustrated below.



9399

## Warranty

Mercury Marine will credit the dealer for the cost of parts and labor until October 31, 2007. A pre authorization is required for each engine requiring this new cowl. Complete warranty claim listing:

- Outboard serial number
- Qty. 1 P/N 887913T02 Top Cowl
- 0.5 hours labor
- Warranty flat rate code SB05
- Part code 904
- Failure mode 00

THE INFORMATION IN THIS DOCUMENT IS CONFIDENTIAL AND PROTECTED BY COPYRIGHT AND IS THE PROPERTY OF MERCURY MARINE.

This document is provided for the sole and exclusive use of the original recipient as prescribed by Mercury Marine and may not be distributed or copied, digitally or otherwise, without the prior written consent of Mercury Marine.