



MERCUISER SERVICE BULLETIN

Section: XII (Bulletins)

Number: 70-8-84

Date : 3/12/70

- A. Trim Limit for MerCruiser 215 Models (Section II)
- B. Trim Indicator Sender Adjustment for 215 (Section II)
- C. Switch and Sender Installation (Section II)
- D. Power Trim Hose Protection (Section II)

A. TRIM LIMIT for MERCUISER 215 MODELS (For Installation Section II)

With certain boats, it is necessary to limit MerCruiser 215E and 215H stern drive outward trim travel to ensure safe control at high speeds. The difficulty arises in control of the boat when the drive is trimmed-out too far. Readjustment (following) of the trim limit switch, which restricts drive outward travel, will keep it within a safe trimming range. The trim limit switch is mounted on the port side of the gimbal ring.

1. Place drive at maximum desired safe outward travel (trim) position.
2. Turn stern drive hard to right (starboard).
3. Remove limit switch leads from harness and connect leads to a continuity tester.
4. Loosen adjusting screws (Figure 1) while holding trim limit switch. (Normally, it is in the closed circuit position.)
5. Rotate switch housing in a clockwise direction until switch circuit just opens, as indicated by tester used.
6. Tighten adjusting screws and reconnect switch leads to complete adjustment.

NOTE: If readjustment cannot be made, remove switch and reinstall according to "Switch and Sender Installation", Item "C", over.

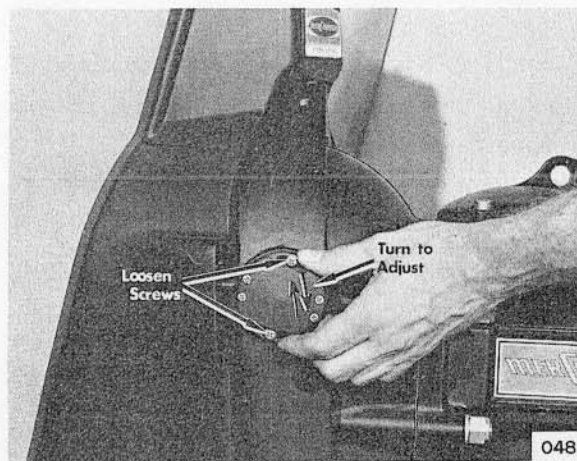


Figure 1. Adjusting Trim Limit Switch and/or Trim Indicator Sender

B. TRIM INDICATOR SENDER ADJUSTMENT for MERCUISER 215 MODELS (Installation Section II)

Use the following procedure for fine adjustment of the instrument needle to bottom of green arc on instrument face for MerCruiser 215 models. The trim indicator sender is mounted on the starboard side of the gimbal ring.

1. Turn stern drive hard to left (port) in full "Down" trim position.
2. Loosen adjusting screws (like Figure 1) while holding indicator sender.
3. Turn ignition key to "Run" position.
4. Rotate indicator sender housing in either direction to show indicator instrument needle on bottom of green arc. (Figure 2)
5. Tighten adjusting screws and check instrument reading. Turn key to "Off" position.

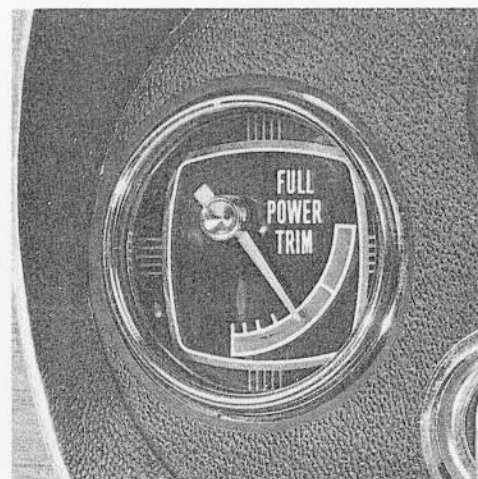


Figure 2. Trim Indicator Instrument

NOTE: If readjustment cannot be made, remove sender and reinstall according to "Switch and Sender Installation", Item "C", over.

(OVER)

C. SWITCH and SENDER INSTALLATION

(For Installation Section II)

1. Align marks on housing and hex rotor shaft (Figure 3) before installation.
2. Align shaft with hinge pin hex and push into position.
3. Follow trim limit or trim indicator adjustment, preceding.
4. Install and tighten adjusting screws.

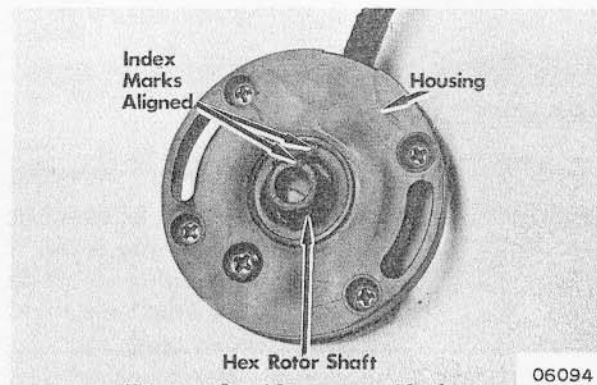


Figure 3 . Alignment Marks

D. POWER TRIM HOSE PROTECTION - MerCruiser - 120 -140 - 160

(For Installation Section II)

Power Trim hydraulic hoses for MerCruiser 120-140-160 (Serial No. 2763441 and below) are routed close to the exhaust elbow. In case of water pump failure, heat from the exhaust elbow could damage the hoses.

To protect hydraulic hoses from heat damage, use Heat Shield C-57990.

C-57990

Heat Shield

\$ _____ U.S. List

C-92-55004A1

Sealant

1.50 U.S. List

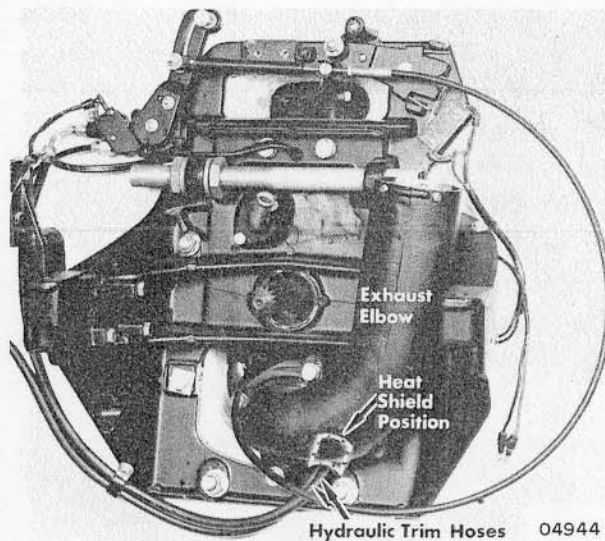
HEAT SHIELD INSTALLATION

1. Place about $\frac{1}{2}$ teaspoon of Sealant (C-92 55004A1) in center on inside of half-round heat shield.

NOTE: Be sure that hose is free from grease, dirt and oil where sealant makes contact with hose.

2. Move hydraulic hoses away from exhaust elbow to position heat shield (Figure 4) with sealant contacting hoses.
3. Release hoses to hold shield in position and allow time for sealant to cure.

Figure 4. Heat Shield Installation



Hydraulic Trim Hoses 04944