

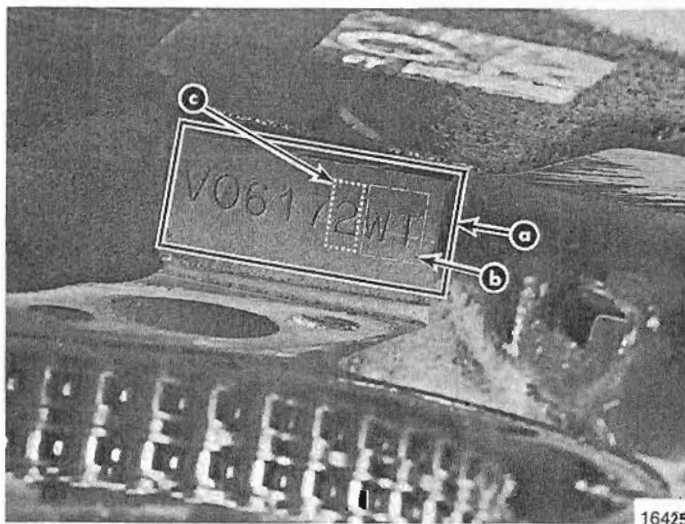
NOTICE

This bulletin supercedes bulletin 85-33.

- A. MerCruiser Engine Identification - G.M. Engine Models (1974 and Newer)
- B. Cylinder Head Identification Marks - G.M. Small Block V-8 Engines (1980 and Newer)
- C. Mercury 4 Cylinder 224 CID Engine Identification - 470/485/488/170/190

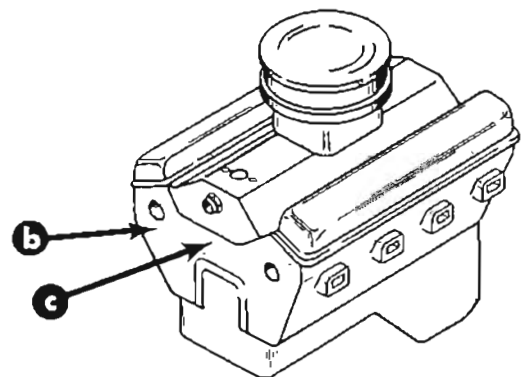
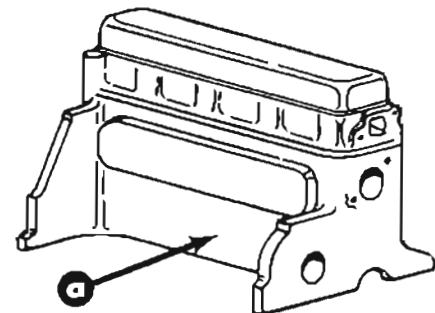
A. MERCUISER ENGINE IDENTIFICATION - G.M. ENGINE MODELS (1974 THRU 1986)

The MerCruiser Model can be determined by looking at the LAST TWO LETTERS of the engine code stamped into the cylinder block. (Figure 1) This code number is stamped on all MerCruiser Power Packages and replacement partial engines but not replacement cylinder block assemblies. In a few cases the last number in the engine code "C in Figure 1" is needed for identification.



- a - Engine Code (V06172WT)
- b - Last Two Letters (WT)
- c - Last Number

Figure 1. G.M. Engine Code



- a - 4 and 6 Cylinder-In-Line (Near Distributor)
- b - V-6 and Small Block V-8 (Front, Starboard Side, Near Cylinder Head Mating Surface)
- c - Large Block V-8 (Front of Engine Just Above Timing Gear/Chain Cover)

Figure 2. G.M. Engine Code Location

If the engine serial number, and/or model decals are missing, the engine code letters may help in determining the engine model. Following is a list of G.M. engines and their respective code letters.

MCM Stern Drive Engines

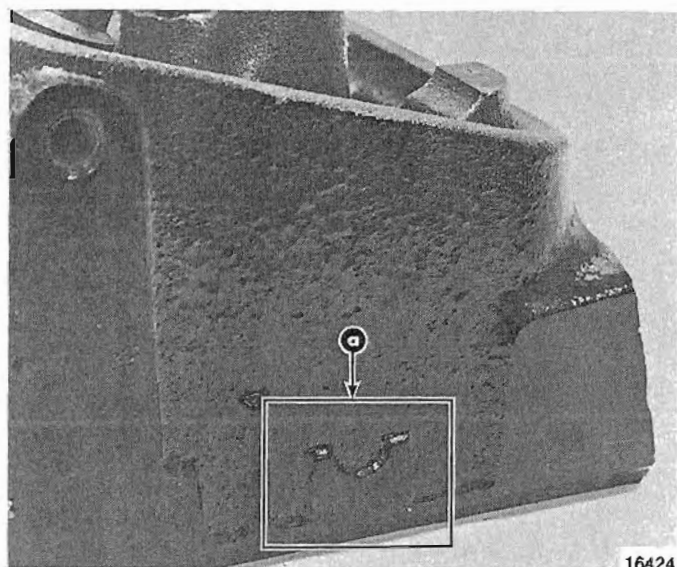
Model	G.M. Code	Rotation		Flywheel Diameter in. (mm)
120	NB	L.H.	1974 Thru 1986/153 CID	12-3/4 (324)
140	RA	L.H.	1974 Thru 1986/181 CID	12-3/4 (324)
165	SD	L.H.	1974 Thru 1980/250 CID	12-3/4 (324)
185	JK	L.H.	V-6 229 CID	12-3/4 (324)
185	KD	L.H.	V-6 262 CID	12-3/4 (324)
185	5KW	L.H.	V-6-262 CID	14 (356)
185	6KW	L.H.	V-6 262 CID/Full Circle Rear Seal	14 (356)
205	KJ	L.H.	V-6 262 CID	12-3/4 (324)
205	5KR	L.H.	V-6 262 CID	14 (356)
205	6KR	L.H.	V-6 262 CID/Full Circle Rear Seal	14 (356)
898/200	MN/MX	L.H.	1974 Thru 1984/305 CID	12-3/4 (324)
200	5MY	L.H.	1985 Model/305 CID	14 (356)
200	PY	L.H.	Full Circle Rear Seal/305 CID	14 (356)
228/230	MJ/MY	L.H.	1974 Thru 1984/305 CID	12-3/4 (324)
230	MZ	L.H.	1985 Model/305 CID	14 (356)
230	PZ	L.H.	Full Circle Rear Seal/305 CID	14 (356)
250/260	WS/WT	L.H.	1974 Thru 1984/350 CID	12-3/4 (324)
260	WB	L.H.	1985 Model/350 CID	14 (356)
260/350 Magnum	AB	L.H.	Full Circle Rear Seal/350 CID	14 (356)
280/300	WK	L.H.	1975 Thru 1985/350 CID Hi-Perf.	12-3/4 (324)
300	AK	L.H.	Full Circle Rear Seal/350 CID Hi-Perf.	14 (356)
330/454 Magnum	XS	L.H.	1977 Thru 1986/454 CID	14 (356)
330 (B-W)	XY	L.H.	1983 Thru 1986/454 CID	14 (356)
370	XF	L.H.	All Thru 1986/454 CID Hi-Perf.	14 (356)
370	HF	L.H.	1987 New Cam, Lifters, Oil Pump/ 454 CID Hi-Perf.	14 (356)
400/440	XF	L.H.	454 CID Hi-Perf.	14 (356)
460	XF	L.H.	482 CID Hi-Perf.	14 (356)
475 Turbo	XF	L.H.	454 CID Hi-Perf.	14 (356)

MIE Inboard Engines

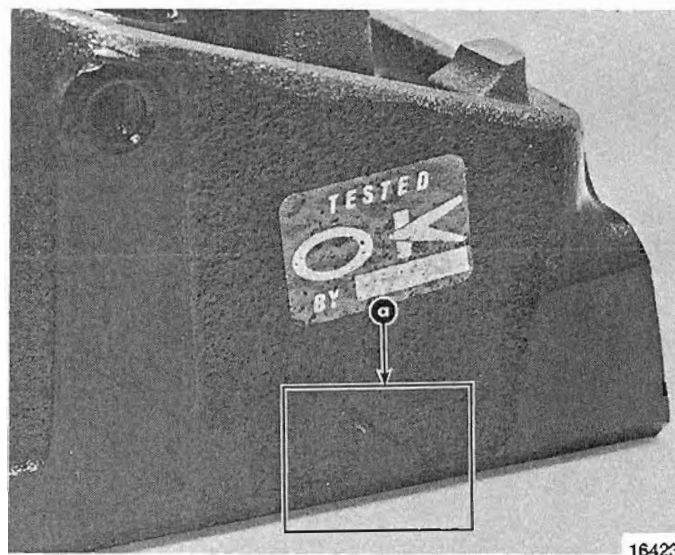
Model	Code	Rotation		Flywheel Diameter in. (mm)
198	MR	L.H.	1978/305 CID	14 (356)
198	MS	R.H.	1978/305 CID	14 (356)
228/230	MA	L.H.	1977 Thru 1985/305 CID	14 (356)
228/230	MB	R.H.	1977 Thru 1985/305 CID	14 (356)
230	PA	L.H.	Full Circle Rear Seal/305 CID	14 (356)
230	PB	R.H.	Full Circle Rear Seal/305 CID	14 (356)
255	WH/WN	L.H.	1975 Thru 1980/350 CID	14 (356)
255	WJ/WR	R.H.	1975 Thru 1980/350 CID	14 (356)
260	WN	L.H.	1981 Thru 1985/350 CID	14 (356)
260/5.7 Ski	WR	R.H.	1981 Thru 1985/350 CID	14 (356)
260/5.7 Ski	AN	L.H.	Full Circle Rear Seal/350 CID	14 (356)
260/5.7 Ski	AR	R.H.	Full Circle Rear Seal/350 CID	14 (356)
5.7 SKI	WB	L.H.	1985 Model/350 CID	14 (356)
330	XN/XY	L.H.	1977 Thru 1980/454 CID	14 (356)
330	XR/XZ	R.H.	1977 Thru 1980/454 CID	14 (356)
340	XY/XYX	L.H.	1981 Thru 1986/454 CID	14 (356)
340	XZ/XZZ	R.H.	1981 Thru 1986/454 CID	14 (356)
350	XB	L.H.	1974 Thru 1975/454 CID	14 (356)
350	XC	R.H.	1974 Thru 1975/454 CID	14 (356)


B. CYLINDER HEAD IDENTIFICATION MARKS - G.M. SMALL BLOCK V-8 ENGINES (1980 and Newer)

The identification mark is located on both ends of the cylinder head.



a. 
Figure 3. 305 CID ENGINES (898, 228, 230)



a. 
Figure 4. 350 CID Engines (255, 260)

C. MERCURY 4 CYLINDER 224 CID ENGINE IDENTIFICATION - 470/485/488/170/190

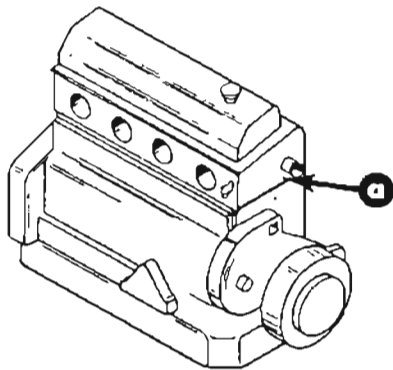
If the engine serial number and/or model decals are missing, the following will help in determining what model it is. Look for stamped code number in cylinder head. Also look at valve spring for color code.

MCM/MIE 470 (L.H.) -Stamped "O" or no stamp at all in cylinder head. Single coil valve springs with orange stripe.

MIE 470 (R.H.) -Same as above plus 1/4" thick ring between cylinder block and distributor.

MCM 485 (Figure 5) -Stamped "5" in cylinder head. Valve springs have internal dampener and Red/Green or Blue/White stripes.

MCM 488 (Figure 5) -Stamped "8" in cylinder head. Valve springs have external dampener around spring and Green stripe.

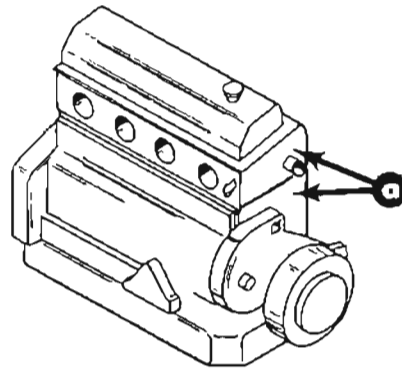


a - "Stamped" Number

Figure 5. Location of Stamped Number

MCM 170/190 (Figure 6)

-Stamped "X" on both cylinder head and block. Same valve spring as 488 except dampener has anti-rotation tab.



a - "X" Stamped On Both the Cylinder Head and Cylinder Block

Figure 6. Location of Identification

NOTE: Refer to MerCruiser Service Bulletin 84-26 for replacement partial engines and cylinder heads used on the 470/485/488/170/190 engines.