

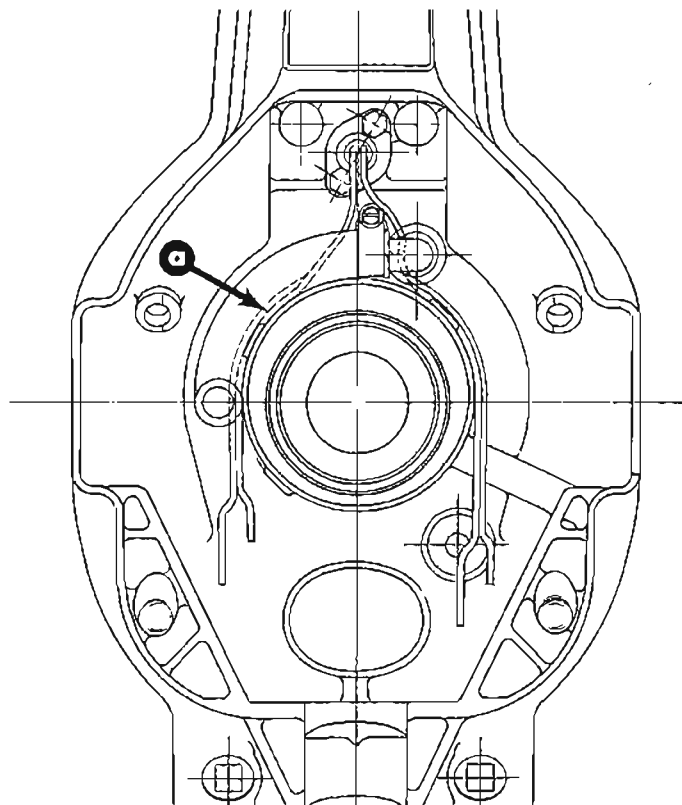
NUMBER: 85-6

CIRCULATE TO:
SERVICE MANAGER
PARTS MANAGER
MECHANICS
"Place In a Service
Bulletin Binder"

- A. Power Trim Pump 20 Amp Fuse Blowing on MerCruiser 120-thru-300 R & MR Models
- B. MC-I Gear Housing Shimming Tool, 91-56048
- C. MC-I Gear Housing Reverse Gear, 43-61026

A. POWER TRIM PUMP 20 AMP FUSE BLOWING ON MERCRUISER 120-THRU-300 R & MR MODELS

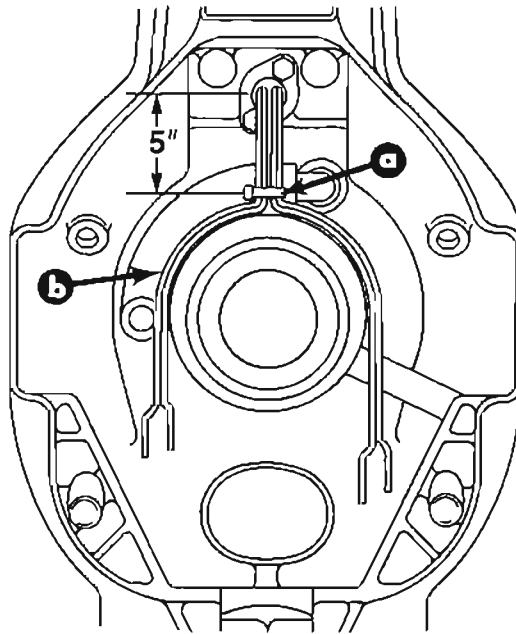
If you encounter a MerCruiser 120-thru-300 R & MR model that blows the 20 amp fuse on the Power Trim pump when trimming "Out/Up", problem may be due to the trim limit switch leads shorting out. We have received reports where the insulation on the leads has chafed thru and allowed the conductor to come in contact with the gimbal housing, causing the shorting condition. (Figure 1)



a - Leads Chafe Thru and Short Out In This Area

Figure 1. Trim Limit Switch Leads Shorting Out

To correct this condition, install new trim limit switch and lead assembly 99122A2 and route leads as shown in Figure 2.



- a - Sta-Strap 61990
- b - Route Leads on Front Side of Hose (As Viewed From Rear)

Figure 2. Trim Limit Switch Lead Routing

MerCruiser 120MR-thru-300MR models with transom assembly serial number 0A354131 and above will have the trim limit switch leads re-routed from the factory.

New routing method should be used whenever servicing any MerCruiser I model with trim limit switch on side of gimbal ring.

B. MC-I GEAR HOUSING SHIMMING TOOL, 91-56048

Shimming Tool, 91-56048 has been changed to incorporate 3 shimming locations. (Figure 3) The 3 locations are identical and any one of the three may be used. Change was made to extend tool life. Part number will not be changed.

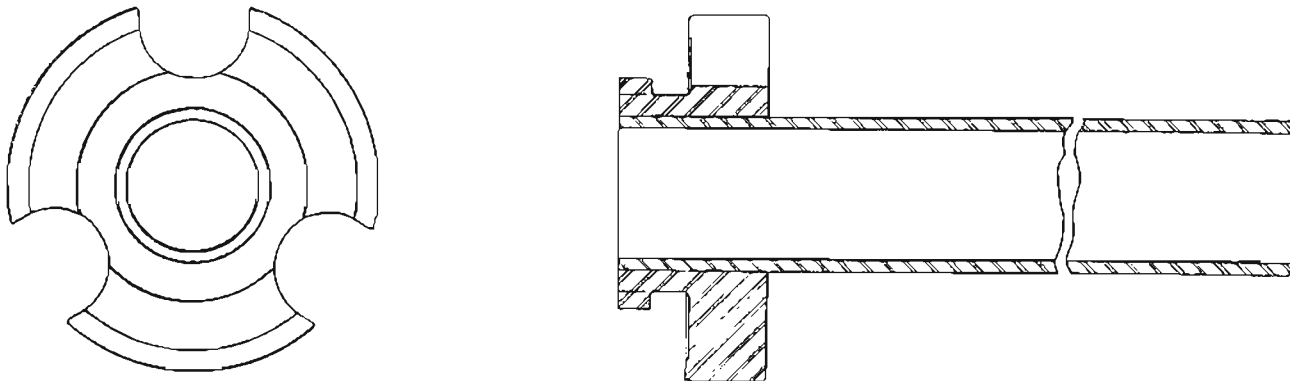


Figure 3. Shimming Tool, 91-56048

C. MC-I GEAR HOUSING REVERSE GEAR, 43-61026

The reverse gear, 43-61026 for the 20/33 gear set (used on MC-I stern drive units with serial no. 3469428 to 5808718) has been reactivated and is now in stock. The gear is being offered in this fashion to eliminate the need to install a complete gear set in the event of a clutch ramp failure or other minor damage to the reverse gear.

IMPORTANT: A gear failure that results from the intermixing of a new gear with damaged used gears will not be covered by Mercury Marine Replacement Part Limited Warranty.

When mixing new and used gears, the gears that are to be reused **MUST BE** carefully inspected to ensure that they are in good condition. Mercury Marine specifically does not recommend individual replacement of gears if a gear tooth failure has occurred. Secondary damage to the teeth on the other gears often occurs in this type of a failure, which is difficult to detect with the naked eye. If pinion or forward gears are damaged, 17/28 gear set 43-96084A2 or A4 must be installed.