

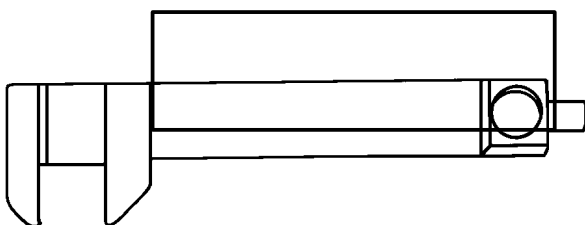
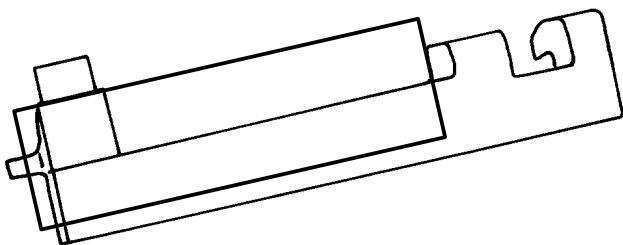
TO: SERVICE MANAGER  TECHNICIANS   
PARTS MANAGER

No. 89-22

## Alpha One Transom Assembly Bell Housing Shift Slide 33981T on 1989 Transom Assemblies Only

It has been brought to our attention that on some 1989 model Alpha One Transom Assemblies, the shift slide could possibly rub or bind in the drive shaft housing shift cavity when shifting into forward gear this will cause the shift cable to activate the shift interrupt switch and shut off the engine when shifted into forward gear. To correct the problem the following must be done.

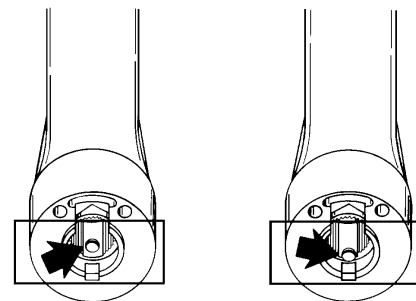
1. Shift remote control into full forward (W.O.T.) position to extend the shift slide to its maximum travel position.
2. Remove drive unit.
3. In area shown in the following photos, remove the casting line slag with a file.



27263

## Control Handle on 88150A7-A8-A9-A11-A15-A17 Pro 120 Controls

It has been brought to our attention that the set screw which secures the handle to the center shaft of the control is pushing the handle back away from the control bezel. This may allow the handle, after a period of time, to miss the lock slot in a neutral position at the cam on the control module. When the set screw hole is drilled at the wrong angle the screw will push the handle back away from the lock ring and the handle may not lock out in the neutral gear position. If so, replace handle with a new one.



GOOD

BAD

50750

## Rochester 2 Barrel Carburetors Becoming NLA

The following Rochester 2 barrel carburetors have been made NLA (No Longer Available) from Mercury Marine because we cannot get them from our supplier anymore. We are trying to get an alternate supplier for these carburetors. If we are successful, we will notify the dealers at that time.

### N.L.A.

MCM 120	1351-7354A1
MCM 140	1351-7355A1
MCM 120/140	1351-8480A2
MCM 165 (6 Cylinder)	1351-7356A1
MCM 888	1376-5659A1

## External Tie Bar Use

**IMPORTANT:** It is recommended that a rigid external tie bar should only be used with a standard internal tie bar, and then, only if the boat is equipped with a dual trim control system (Quicksilver P/N 90362A3). If using a trim control system other than Quicksilvers, that system must raise and lower both drives together as a unit when they are positioned above the normal trim range (up or down within the trailering range).

### CAUTION

Failure to observe the previous recommendation could result in serious damage to the steering and/or trim system components. This damage could adversely affect control of the boat.