

service bulletin

WARRANTY INFORMATION **SERVICE INFORMATION**
 PARTS INFORMATION

Bulletin No. 2002-03

Circulate to: Sales Manager Accounting Service Manager Technician Parts Manager

Required Boost Pump Installation

Models

MIE 350 MPI Tow Sport engines: S/N 0M310010-0M312122.

MIE Black Scorpion (5.7L) Tow Sport engines: S/N 0L678037-0L679432.

MIE Black Scorpion (6.2L) Tow Sport engines: S/N 0L679125-0L679176.

NOTE: *Not all products in the serial number range given are affected by this fix. Some products may have been repaired before they left the factory. Dealers on MercNET should first check the product history before starting the repair to verify that the product they are working on still has an open fix program for it.*

Situation

Under certain conditions, vapor locking may occur on these engines. When this happens, the engine will not restart or be difficult to restart after a shut down of 15 to 45 minutes.

Correction

Installing the Boost Pump Kit listed in this bulletin will allow the engine to restart if it experiences a vapor lock condition.

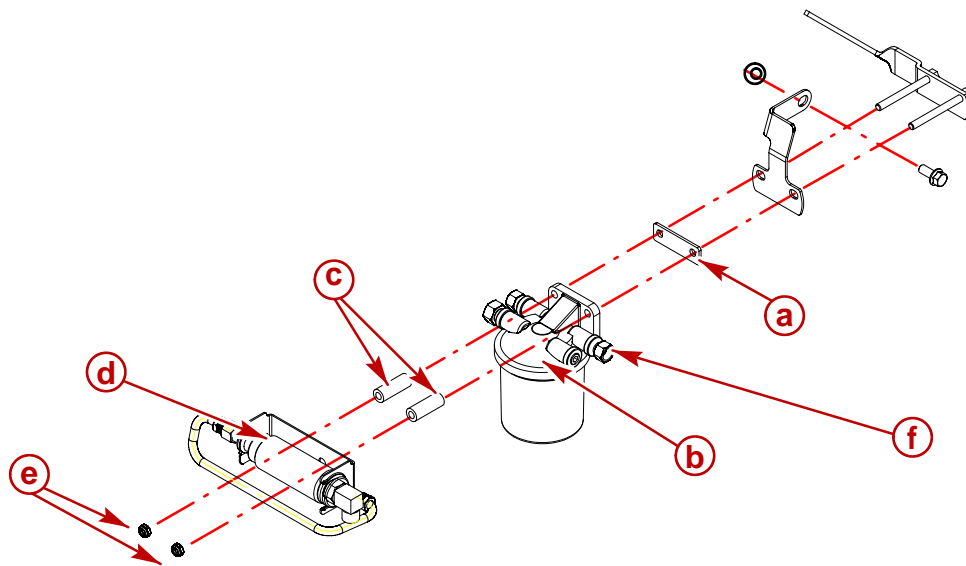
NOTE: *This Boost Pump Kit will not prevent or correct vapor locking.*

Before ordering the Boost Pump Kit, look at the engine to see if one has already been installed. The boost pump mounts to the fuel filter base. This kit includes an In-line Fuel Filter that is mounted between the boat's fuel tank and boost pump inlet. Follow the instructions supplied in the kit, mounting filter to the engine or boat's structure with the clip provided in the kit. Do not let the filter hang by hose connections or off of the fuel pump inlet.

IMPORTANT: Do not mount the In-line Filter Kit directly to the inlet of the Boost Pump. Per CFR 183.570, Fuel Filters and strainers: Installation (Code of Federal Registry - USCG). "Each fuel filter and strainer must be supported on the engine or the boat structure independent from its fuel line connections, unless the fuel filter or strainer is inside a fuel tank."

THE INFORMATION IN THIS DOCUMENT IS CONFIDENTIAL AND PROTECTED BY COPYRIGHT AND IS THE PROPERTY OF MERCURY MARINE.

This document is provided for the sole and exclusive use of the original recipient as prescribed by Mercury Marine and may not be distributed or copied, digitally or otherwise, without the prior written consent of Mercury Marine.



- a** - Insulator Plate
- b** - Fuel Filter Base
- c** - Collars
- d** - Boost Pump Assembly
- e** - Locknuts
- f** - Fuel Inlet Fitting

Ordering Kit

Qty 1 P/N 861155A12 Boost Pump Assembly-Ski.

Warranty

Submit warranty claim through your normal warranty-processing channel.

Warranty Code and Labor: MF18 1.0 Hours.

Uniform Failure Observation (UFO) Code: 777 - 40.

THE INFORMATION IN THIS DOCUMENT IS CONFIDENTIAL AND PROTECTED BY COPYRIGHT AND IS THE PROPERTY OF MERCURY MARINE.

This document is provided to be used for solely and exclusively by the original recipient and as prescribed by Mercury Marine and may not be distributed or copied, digitally or otherwise, without the prior written consent of Mercury Marine.