



# Service Bulletin

Bulletin No. 2009-68  
CMD 2009-08

Circulate to:  Sales Manager  Accounting  Service Manager  Technician  Parts Manager

## Activation of the Low Drive Lube Alarm for QSD 2.8L & 4.2L Models Models Affected

All Cummins MerCruiser Diesel QSD 2.8L and 4.2L sterndrive models with SmartCraft 2.2 (48-Pin System Integration Module).

### Situation

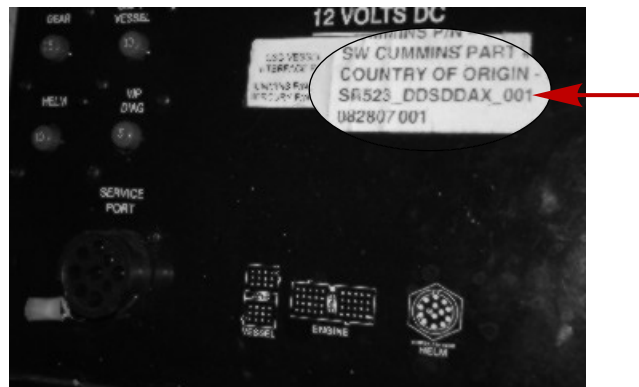
On QSD DTS and non-DTS sterndrive applications, the Smart Tachometer check engine fault display for a "Low Drive Lube" condition was disabled. The following System Integration Module (SIM) calibrations are affected:

| Application | Affected System Integration Module (SIM) Calibrations |
|-------------|---|
| Non-DTS     | S08R001_SDNAAX_000.srz                                |
| DTS         | S08R001_SDDAAX_000.srz                                |

With these SIM calibrations the Smart Tachometer check engine fault indication will not turn on and the VesselView alarm horn will not sound in the event of a sterndrive "Low Drive Lube" condition.

### Correction

Confirm that the SIM has the affected calibration. The SIM calibration number is provided on the SIM identification decal.



42696

#### SIM Calibration Number

The following SIM module calibrations enable the check engine fault display on the Smart Tachometer and the alarm horn on the VesselView:

| Application | Updated System Integration Module (SIM) Calibrations | Part Number |
|-------------|--|-------------|
| Non-DTS     | S08R001_SDNAAX_001.srz                               | 5264219     |
| DTS         | S08R001_SDDAAX_001.srz                               | 5264218     |

Update each affected SIM Module with the latest calibration using the VesselView configuration tool.

THE INFORMATION IN THIS DOCUMENT IS CONFIDENTIAL AND PROTECTED BY COPYRIGHT AND IS THE PROPERTY OF MERCURY MARINE.

This document is provided for the sole and exclusive use of the original recipient as prescribed by Mercury Marine and may not be distributed or copied, digitally or otherwise, without the prior written consent of Mercury Marine.

**IMPORTANT:** After updating the SIM, cross out the old calibration number on the SIM identification decal and write the new calibration number with a fine-point permanent marker.

## Parts Information

Refer to the Cummins MerCruiser Diesel SmartCraft download site at [https://gce.cummins.com/mce/mce\\_scdownloadctr/index\\_scv.htm](https://gce.cummins.com/mce/mce_scdownloadctr/index_scv.htm) for the required software update.

## Warranty

Mercury Marine will credit the dealer for labor costs associated with this software update. Submit a warranty claim through your normal warranty processing channel listing:

- MerCruiser engine serial number
- Flat Rate Code MP81
- Labor at 0.5 hours
- Part Code 566
- Failure Code 79

THE INFORMATION IN THIS DOCUMENT IS CONFIDENTIAL AND PROTECTED BY COPYRIGHT AND IS THE PROPERTY OF MERCURY MARINE.

This document is provided for the sole and exclusive use of the original recipient as prescribed by Mercury Marine and may not be distributed or copied, digitally or otherwise, without the prior written consent of Mercury Marine.