

Circulate to: Sales Manager Accounting Service Manager Technician Parts Manager

Diagnostic Tool Update - CDS Software Version 10.01

Scope

Worldwide

Summary

Mercury Marine and Bosch are pleased to announce the release of CDS version 10.01. Previous versions were distributed on CD-ROM. CDS version 10.01 will be distributed on a USB flash drive, also known as a USB drive, USB stick, or thumb drive. Refer to the following list for important information regarding CDS version 10.01.

- CDS version 10.01 will only be available on a USB flash drive.
- CDS version 10.01 part number—8M0126020.
- CDS version 10.01 **does not** include a Media ID or license; this is a software update only.
- Please contact Bosch at 1-800-345-2233 for more information.



64035

New Features Introduced in CDS Version 10.01

CDS Version 10.01 introduces new features listed below.

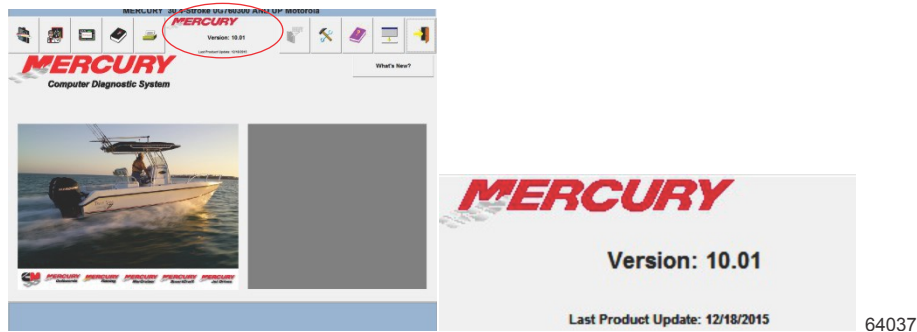
- Verado 350 SCi engine has been added to Race Outboard.
 - This enhancement allows direct selection of this engine without the need to select similar Verado engines.
- Verado 350 SCi engine has one new data item added:
 - Fuel pressure filtered
- Verado and OptiMax engines have been grouped by engine displacement to simplify engine selection.
- Service and Operation manuals have been updated for many engines to incorporate numerous recent updates.

THE INFORMATION IN THIS DOCUMENT IS CONFIDENTIAL AND PROTECTED BY COPYRIGHT AND IS THE PROPERTY OF MERCURY MARINE.

This document is provided for the sole and exclusive use of the original recipient as prescribed by Mercury Marine and may not be distributed or copied, digitally or otherwise, without the prior written consent of Mercury Marine.

CDS Version Number

The version number defines two parts of the version: a major version, and a minor version. The following image is from the CDS home screen.



Operating System Requirements

- Microsoft Windows 7 Professional with Service Pack 1®.
- Microsoft Windows 10 Professional® or higher.

CDS Software Authorization

When installing the CDS software, authorization (administrator rights) is required.

Administrative Rights

The user performing the CDS program installation must have administrative rights. If the computer has a MCDS user account, that user account was given administrative rights when it was created by an earlier CDS installation.

NOTE: Some information technology (IT) departments may restrict user rights for these accounts. If this has occurred, either the IT department must perform the installation, or they must grant administrative rights to the user accounts performing the installation.

Antivirus/Internet Security Products

Antivirus and internet security products are recommended for use on computers running the CDS programs. They help protect the computer from threats that may be encountered during internet sessions. Some of these products may display security warnings during the CDS installation. If this occurs, the user must determine whether the warning is caused by the CDS installation program, or if there is some other cause, such as a computer virus. If it can be determined that the CDS installation program caused the warning, the user should allow the installation program to proceed.

Computer Requirements for CDS

Computer Hardware	Minimum	Recommended
CPU	1.2 GHZ multicore processor	2.4 GHZ or higher
Screen resolution	1024 x 768	–
Screen size	25.7 cm (10.1 in.)	–
Memory	2 GB RAM	8 GB RAM or higher
Hard drive	120 GB hard drive	128 GB or higher
Internet access	Wired ethernet 10/100 or wireless	Wireless
CD/DVD-ROM drive	DVD-ROM	External USB drive is acceptable
USB	Three USB 2.0 or 3.0 ports	USB with external USB hub
External ports	Optional 9-pin serial port	Mouse

CDS Software Installation

When installing the CDS software, it is likely one of the following installation processes will be required.

THE INFORMATION IN THIS DOCUMENT IS CONFIDENTIAL AND PROTECTED BY COPYRIGHT AND IS THE PROPERTY OF MERCURY MARINE.

This document is provided for the sole and exclusive use of the original recipient as prescribed by Mercury Marine and may not be distributed or copied, digitally or otherwise, without the prior written consent of Mercury Marine.

Upgrade (Install CDS Software on an Existing CDS Computer)

When upgrading an existing CDS computer, you will only need to run the **Install Mercury v10.01 shortcut** and follow the installation instructions to update. If transferring from one computer to a different one, you will need to contact Bosch to release the Media ID.

First Time Installation (New Computer With New CDS Software)

CDS Version 10.0 does **not** include a license or Media ID, it is a software update only.

- Installations on new computers require a Media ID.
- If the Media ID is lost, or you need a new Media ID, call Bosch at 1-800-345-2233. Fees may apply.

For a first time installation, run the **Install Mercury v10.01 shortcut** and follow the installation instructions. After the CDS software installation has been completed, a one-time activation and a web-sync is required.

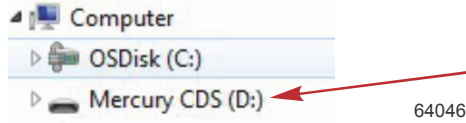
Part Numbers

To receive CDS version 10.01, you will need to order part number 8M0126020. The purchase of 8M0126020 does not constitute ownership, license, or Media ID; this is an update only.

- Registered users can upgrade their CDS from version 9 to 10.01 with this part number.
- Dealers will need to contact Bosch at 1-800-345-2233 if they lost their Media ID. Fees may apply.
- If the installation is moving from one computer to a different one, Bosch will need to release the Media ID. Fees may apply.

Installation Instructions

1. Insert the USB flash drive into an available USB port.
2. Select your USB flash drive (in this example the USB flash drive is the D: drive). Double click the icon to open.

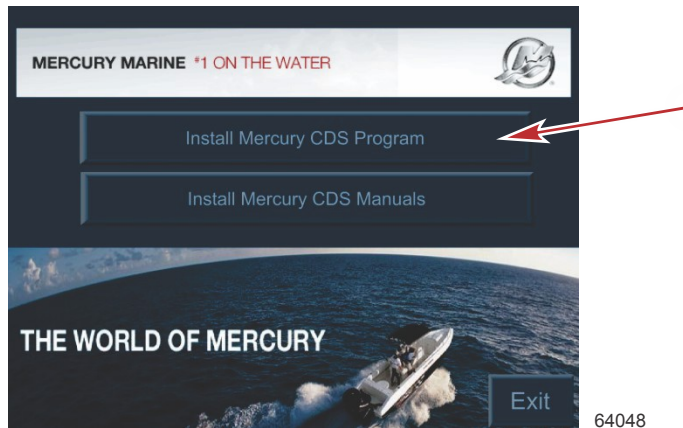


3. Double click on **"Install Mercury v10.01"** to install CDS version 10.01.

Name	Date modified	Type	Size
Mercury	2/4/2016 3:45 PM	File folder	
Install Mercury v10.01	2/10/2016 7:35 AM	Shortcut	2 KB

The 'Install Mercury v10.01' shortcut is highlighted with a red arrow. The text '64047' is visible to the right of the table.

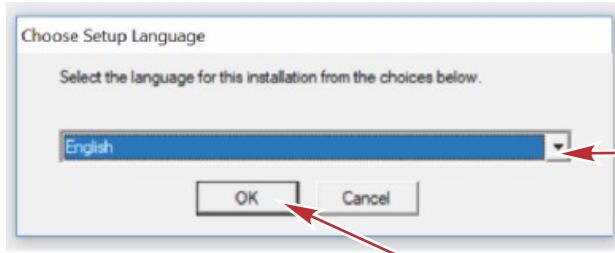
4. Click on the **"Install Mercury CDS Program"** button.



THE INFORMATION IN THIS DOCUMENT IS CONFIDENTIAL AND PROTECTED BY COPYRIGHT AND IS THE PROPERTY OF MERCURY MARINE.

This document is provided for the sole and exclusive use of the original recipient as prescribed by Mercury Marine and may not be distributed or copied, digitally or otherwise, without the prior written consent of Mercury Marine.

5. Select your language from the pull-down menu, then click the "OK" button.

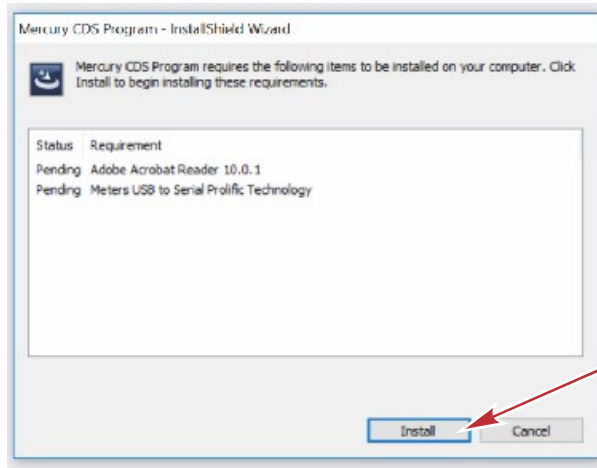


- a - Pull-down menu
- b - "OK" button

64053

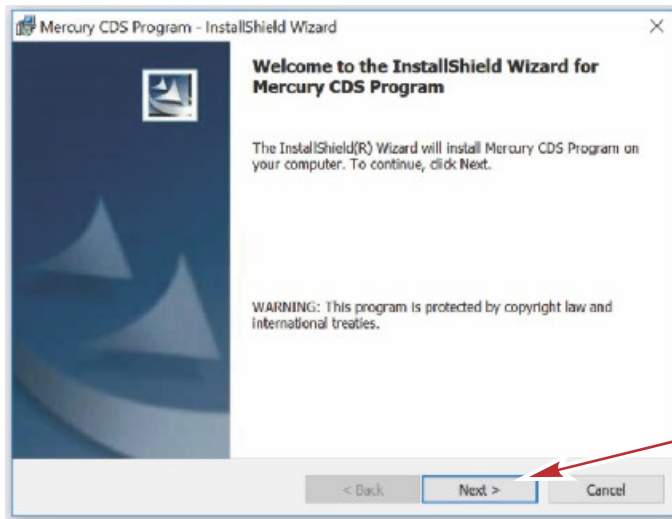
6. After clicking the "OK" button, a window will appear displaying items to be installed for the program to work correctly. Click the "Install" button to continue.

NOTE: If you previously installed CDS, you may not see this screen.



64054

7. Click the "Next" button to continue.

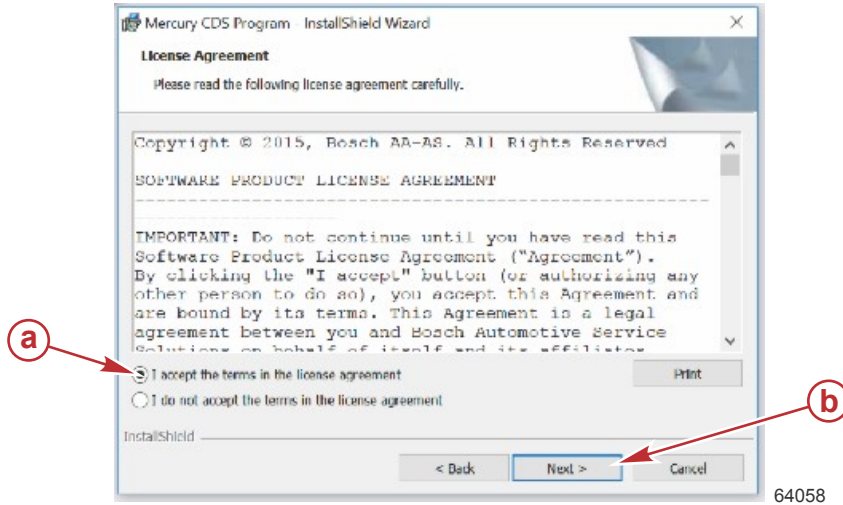


64056

THE INFORMATION IN THIS DOCUMENT IS CONFIDENTIAL AND PROTECTED BY COPYRIGHT AND IS THE PROPERTY OF MERCURY MARINE.

This document is provided for the sole and exclusive use of the original recipient as prescribed by Mercury Marine and may not be distributed or copied, digitally or otherwise, without the prior written consent of Mercury Marine.

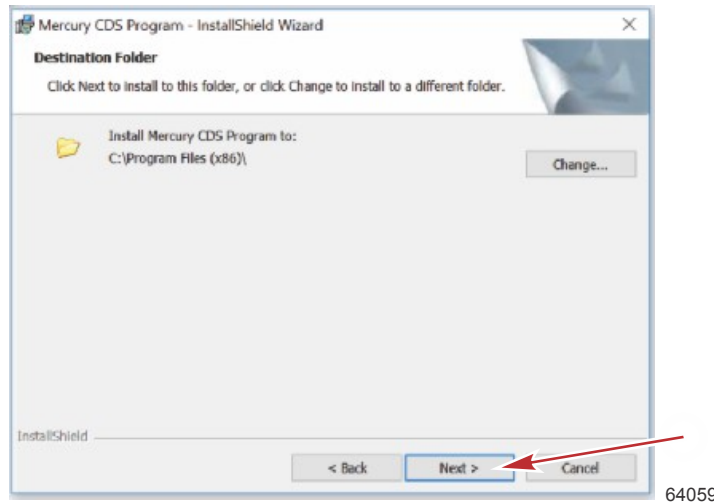
- After you have read the terms of the license agreement and you agree, click on **"I accept the terms in the license agreement,"** then click on the **"Next"** button to continue.



- a - "I accept the terms in the license agreement"
- b - "Next" button

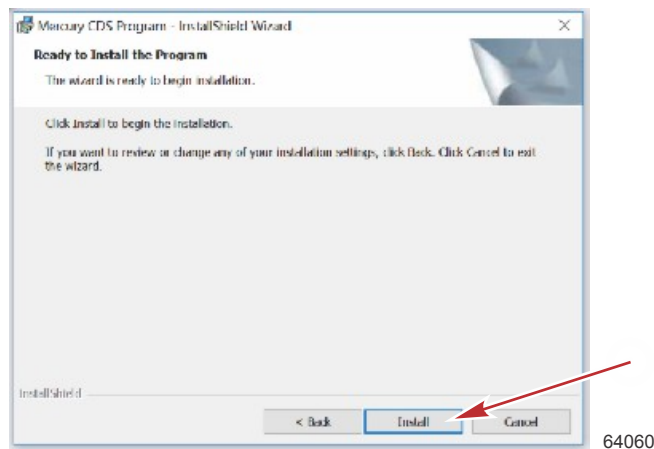
64058

- After clicking the **"Next"** button, the file path where CDS will be installed is displayed. Click on the **"Next"** button to continue.



64059

- Click on the **"Install"** button to continue.

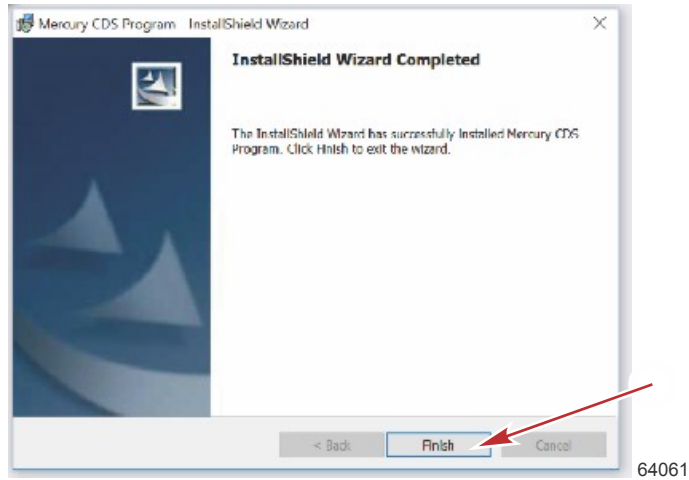


64060

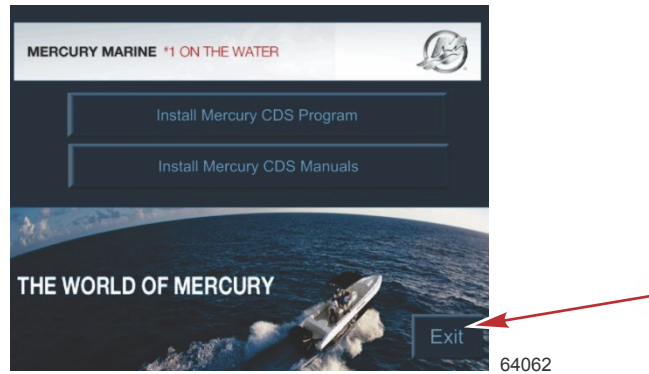
THE INFORMATION IN THIS DOCUMENT IS CONFIDENTIAL AND PROTECTED BY COPYRIGHT AND IS THE PROPERTY OF MERCURY MARINE.

This document is provided for the sole and exclusive use of the original recipient as prescribed by Mercury Marine and may not be distributed or copied, digitally or otherwise, without the prior written consent of Mercury Marine.

11. After the installation is complete, click the **"Finish"** button to continue.



12. Click the **"Exit"** button to exit.



One-Time Activation

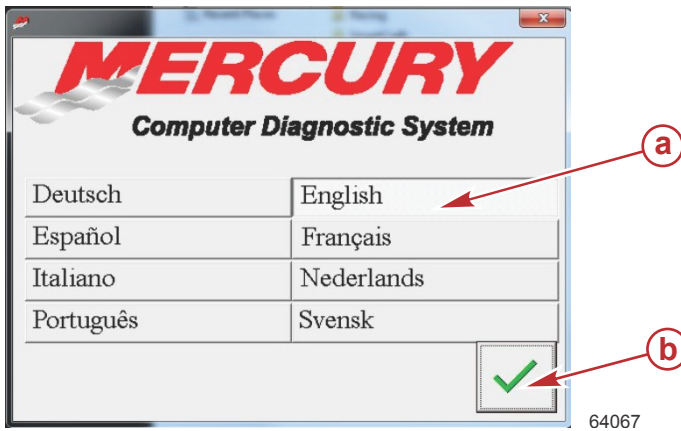
1. Double click on your desktop CDS icon to perform a web sync and start registration.



THE INFORMATION IN THIS DOCUMENT IS CONFIDENTIAL AND PROTECTED BY COPYRIGHT AND IS THE PROPERTY OF MERCURY MARINE.

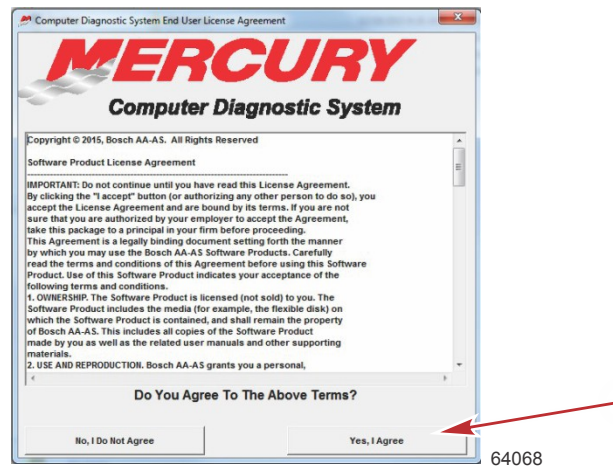
This document is provided for the sole and exclusive use of the original recipient as prescribed by Mercury Marine and may not be distributed or copied, digitally or otherwise, without the prior written consent of Mercury Marine.

- Click on the language you want, then click on the green check mark to continue.



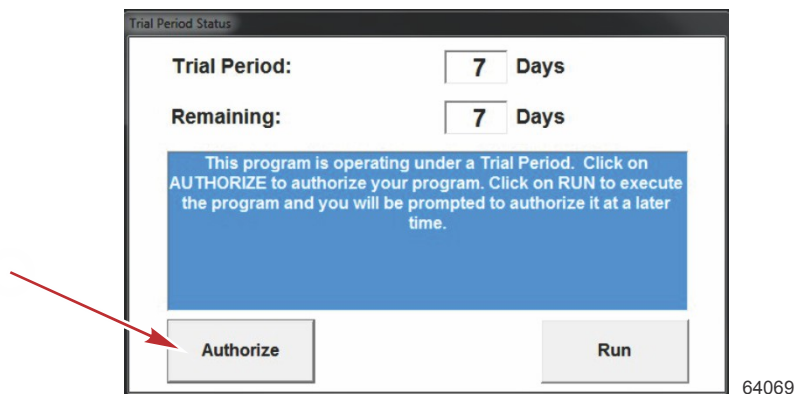
- a - Language selection
- b - Green check mark

- After you have read the terms of the license agreement and you agree, click on the **"Yes, I Agree"** button to continue.



- The first time CDS is started, the program will prompt you to authorize the software. You have seven days to complete this. Click on the **"Authorize"** button. You will need a Media ID (from your original CDS software CD-ROM case), a Unit ID (automatically generated), and a Passcode (obtained through a Bosch website: <http://passcode.service-solutions.com/MCDS.html>).

NOTE: The Bosch call center phone number is 1-800-345-2233.



THE INFORMATION IN THIS DOCUMENT IS CONFIDENTIAL AND PROTECTED BY COPYRIGHT AND IS THE PROPERTY OF MERCURY MARINE.

This document is provided for the sole and exclusive use of the original recipient as prescribed by Mercury Marine and may not be distributed or copied, digitally or otherwise, without the prior written consent of Mercury Marine.

5. Enter the Media ID and Passcode in the appropriate fields, then click on the **"Authorize"** button to register the software. For more information about the Unit ID, Media ID, and Passcode, refer to the following information.



- a - Media ID field
- b - Passcode field
- c - Authorize button

Unit ID

The Unit ID will be generated by the CDS software during the authorization process.

Media ID

The Media ID was provided on the original previous CDS software you purchased.

- The Media ID is usually located on the envelope of the installation disk contained in the original kit.
- This number is specific to your purchase.
- If you are transferring your CDS system to another computer, you will need your Media ID to be released to allow authorization on the new computer.
- Neither Bosch nor Mercury Marine retains a record of your Media ID.
- It is your responsibility to retain this number.
- If a replacement Media ID is needed, Bosch can sell you a replacement number. Bosch will only provide a replacement Media ID to registered owners of CDS systems and a fee will be charged for this service.

Passcode

To receive a passcode, visit Bosch's security website at <http://passcode.service-solutions.com/MCDS.html>, enter your dealer number, phone number, Unit ID, and Media ID, click submit and you will be provided with a passcode.

- A passcode is good for one use.
- If further assistance is required, contact Bosch at 1-800-345-2233.

Web-Sync

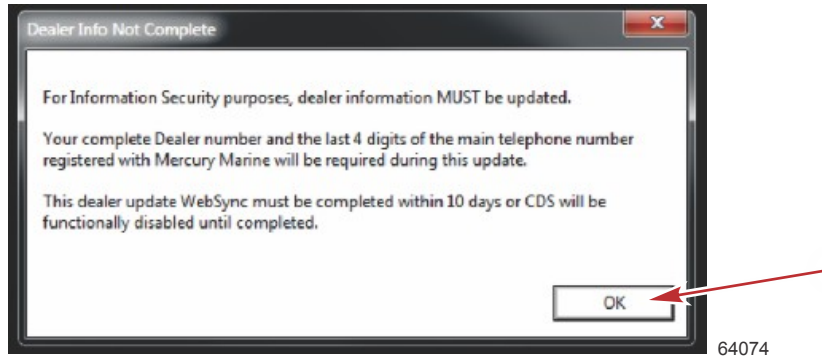
A web-sync is required.

- You have 10 days to complete this initial web-sync. **If this is not performed, the CDS program will be locked after 60 days.**
- The user will be prompted to perform a web-sync every 60 days.
- An internet connection is required to perform a web-sync.

THE INFORMATION IN THIS DOCUMENT IS CONFIDENTIAL AND PROTECTED BY COPYRIGHT AND IS THE PROPERTY OF MERCURY MARINE.

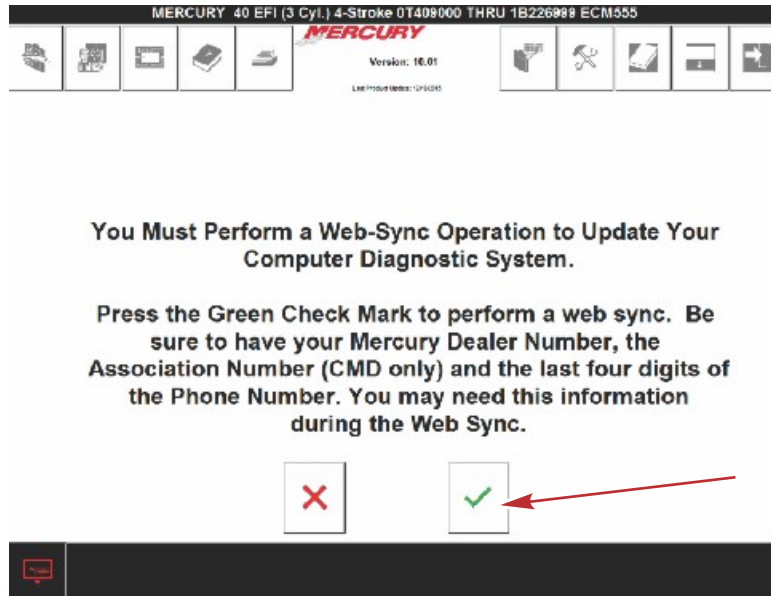
This document is provided for the sole and exclusive use of the original recipient as prescribed by Mercury Marine and may not be distributed or copied, digitally or otherwise, without the prior written consent of Mercury Marine.

1. After installing CDS, a pop-up window will appear notifying you to perform a web-sync within 10 days. Click on the "OK" button to continue.



64074

2. A new window will appear. Click on the green check mark to continue.

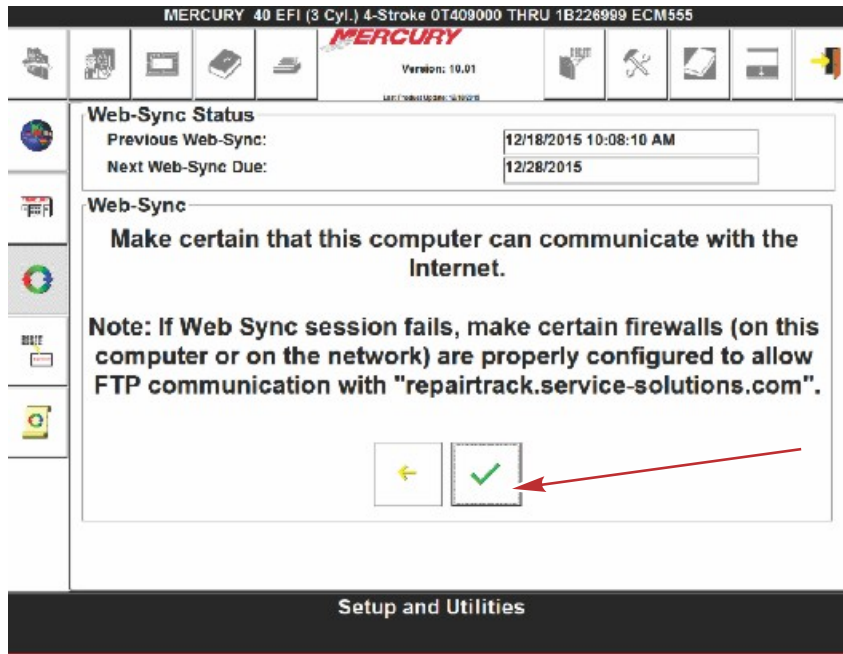


64083

THE INFORMATION IN THIS DOCUMENT IS CONFIDENTIAL AND PROTECTED BY COPYRIGHT AND IS THE PROPERTY OF MERCURY MARINE.

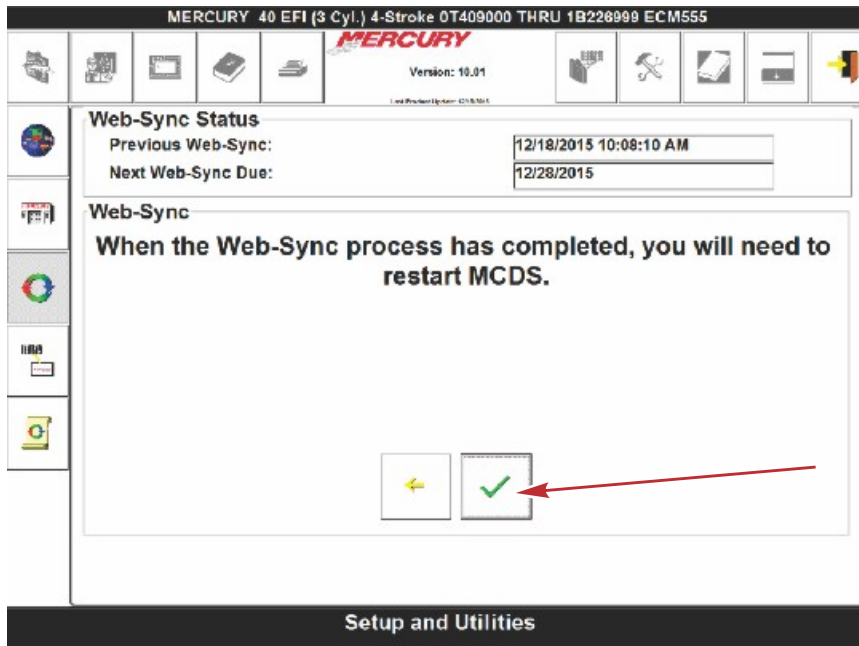
This document is provided for the sole and exclusive use of the original recipient as prescribed by Mercury Marine and may not be distributed or copied, digitally or otherwise, without the prior written consent of Mercury Marine.

3. Follow the on-screen instructions. Click on the green check mark to continue.



64084

4. Follow the on-screen instructions. Click on the green check mark to continue.

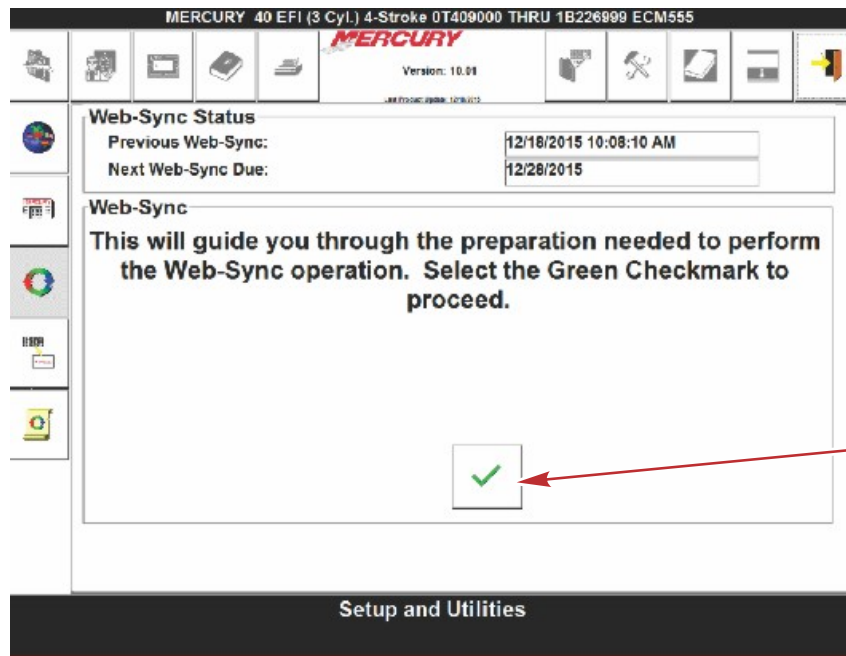


64085

THE INFORMATION IN THIS DOCUMENT IS CONFIDENTIAL AND PROTECTED BY COPYRIGHT AND IS THE PROPERTY OF MERCURY MARINE.

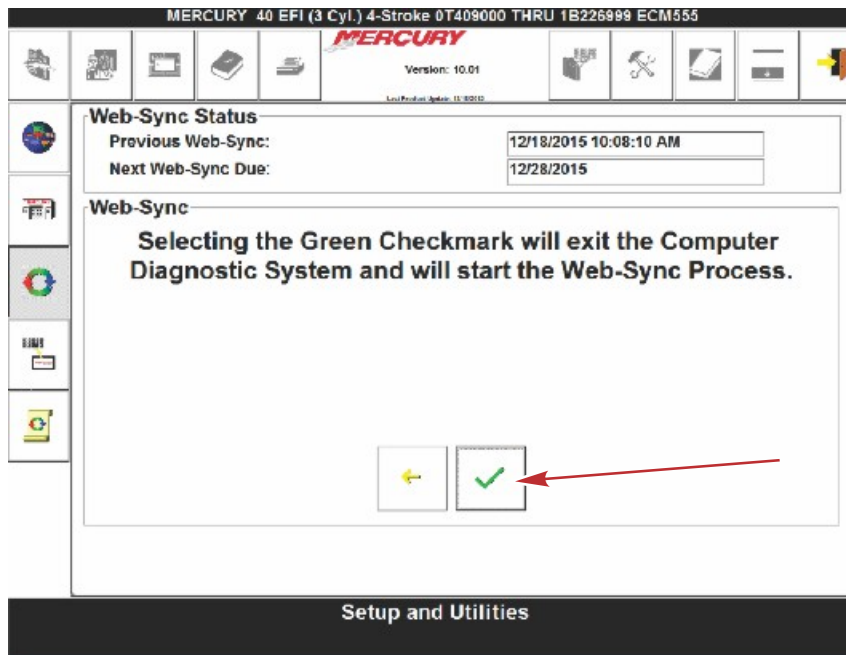
This document is provided for the sole and exclusive use of the original recipient as prescribed by Mercury Marine and may not be distributed or copied, digitally or otherwise, without the prior written consent of Mercury Marine.

- Follow the on-screen instructions. Click on the green check mark to continue.



64091

- Follow the on-screen instructions. Click on the green check mark to continue.

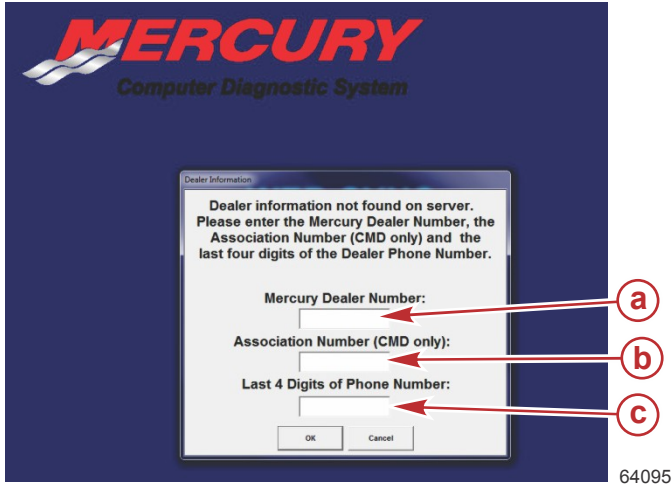


64092

THE INFORMATION IN THIS DOCUMENT IS CONFIDENTIAL AND PROTECTED BY COPYRIGHT AND IS THE PROPERTY OF MERCURY MARINE.

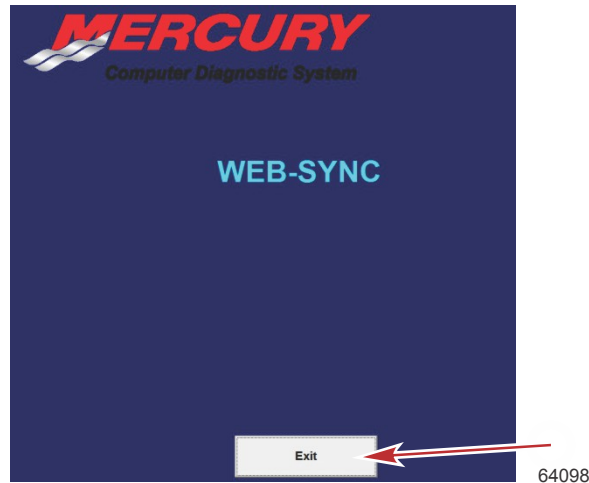
This document is provided for the sole and exclusive use of the original recipient as prescribed by Mercury Marine and may not be distributed or copied, digitally or otherwise, without the prior written consent of Mercury Marine.

7. A new window will appear. Fill in the 7-digit Mercury Dealer Number and Last 4 Digits of Phone Number fields. Leave the Association Number field blank. Click the "OK" button to continue.



- a - 7- digit Mercury Dealer Number field
- b - Association Number field (leave blank)
- c - Last 4 Digits of Phone Number field

8. Click on the "Exit" button to close.



Bosch Service and Maintenance 1-800-345-2233

When contacting Bosch for assistance, please be aware of the status of your service contract. If your service agreement has expired, you will be required to purchase a new agreement. Please have your Mercury Marine dealer number and CDS software version available.

THE INFORMATION IN THIS DOCUMENT IS CONFIDENTIAL AND PROTECTED BY COPYRIGHT AND IS THE PROPERTY OF MERCURY MARINE.

This document is provided for the sole and exclusive use of the original recipient as prescribed by Mercury Marine and may not be distributed or copied, digitally or otherwise, without the prior written consent of Mercury Marine.

USB to Serial Adapters and SmartComms Interface Box

A USB to serial adapter cable is available from Bosch. The part number is MM-50842.



The SmartComms Interface box is available from Bosch. The part number is MM-46944.



THE INFORMATION IN THIS DOCUMENT IS CONFIDENTIAL AND PROTECTED BY COPYRIGHT AND IS THE PROPERTY OF MERCURY MARINE.

This document is provided for the sole and exclusive use of the original recipient as prescribed by Mercury Marine and may not be distributed or copied, digitally or otherwise, without the prior written consent of Mercury Marine.