

## Replacement Hi-Performance Digital ECU Box Applications/Specifications

**REVISED APRIL 1999.**

**Destroy original January 98-3 Service Bulletin. Changes are underlined.**

ECU boxes have changed from 11350A\_ to 849849A\_ for increased durability and reliability. 11350A\_ ECU boxes will be used for production until the end of 1998 model year. For all models the 849849A\_ ECU will be the current service replacement box.

### FEATURES OF 849849A\_ ECU BOX

- Thinner ECU box design with cast cover.
- Uses Different tester connector, (see the following diagrams).
- The Enrichment adjustment moved from the front of the ECU box to the back.
- ECU chips are now hard potted into the box for durability and cannot be removed.

For additional information concerning 11350A\_ ECU boxes refer to service bulletin 95-5 revised 9-97.

MODEL	SERVICE PART NUMBER	PROM ID	FUEL REG. PRESSURE	NOTES	REV. LIMIT R.P.M.'S SOFT/HARD	SUPERSEDES FROM
2.0L MOD U.	849849A2	<u>7115</u>	56 psi	B	none/11500	11350A45
2.0L P.R.O.P.	849849A3	<u>7113</u>	56 psi	B	9300/9400	11350A53
2.4L	849849A4	<u>7114</u>	39 psi	A	7500/7800	11350A40
2.5L EFI	849849A1	<u>7110</u>	39 psi		7600/7900	11350A49
2.5L R.O.S	849849A5	<u>7109</u>	39 psi		none/8200	11350A36
2.5L DRAG	849849A6	<u>7119</u>	56 psi	B	none/11500	11350A63
S3000 (see note)	849849A7	<u>7108</u>	56 psi	B/C	9350/9650	11350A47
S3000 (see note)	849849A8	<u>7117</u>	56 psi	B/D	9300/9400	11350A61
S3000 P.R.O.P.	<u>849849A10</u>	<u>7323</u>	56 psi	B	8650/9100	<u>849849A9</u>

### NOTES:

(A) Service item only. Was not original equipment on any 2.4L.

(B) High volume fuel pump (P/N 848045A7) is used in conjunction with all ECU's requiring a 56 psi fuel pressure regulator. Part number for 56 psi pressure regulator is 12026-2.

(continued on next page)

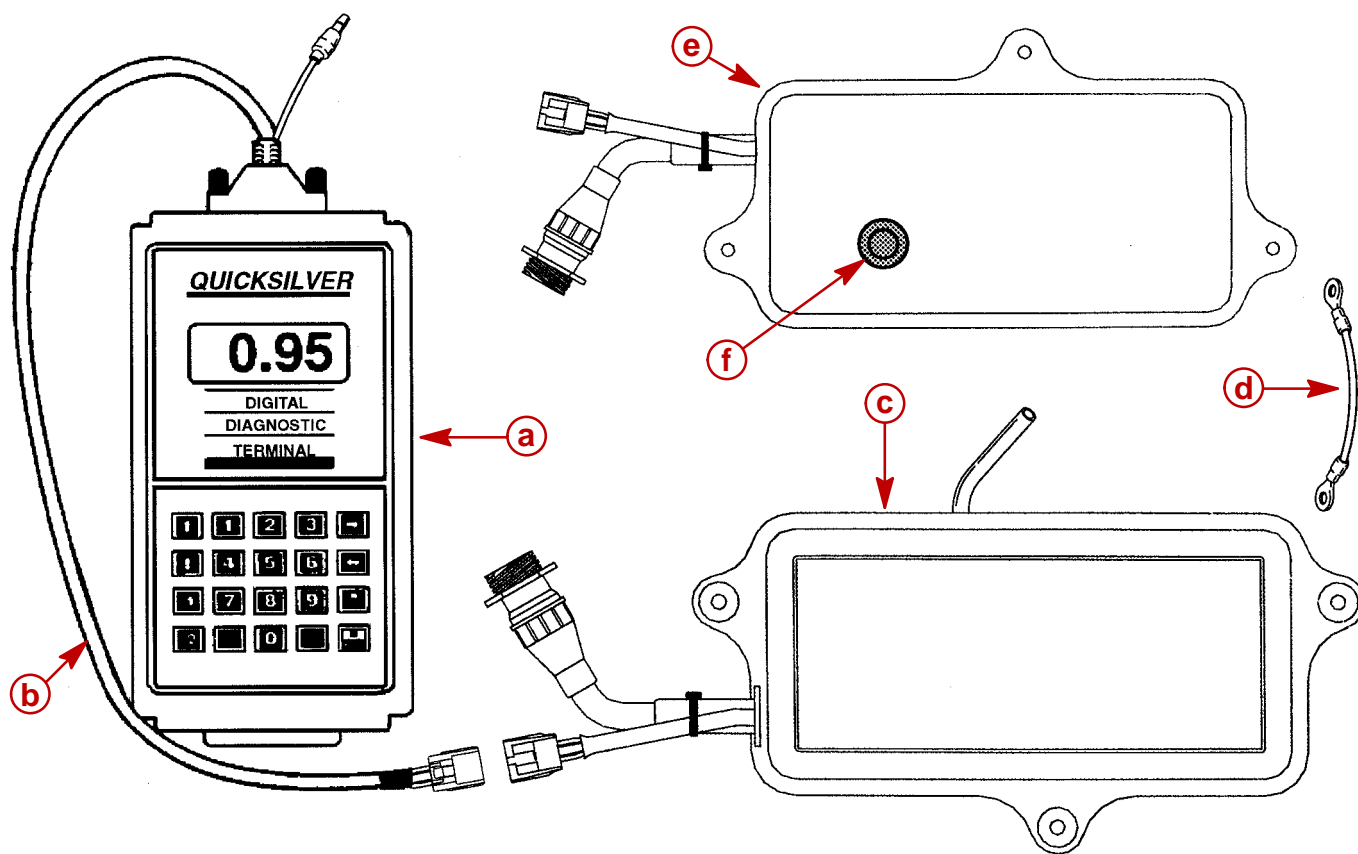
(C) 1995 model year and earlier.

(D) 1996 model year to present.

**IMPORTANT:**

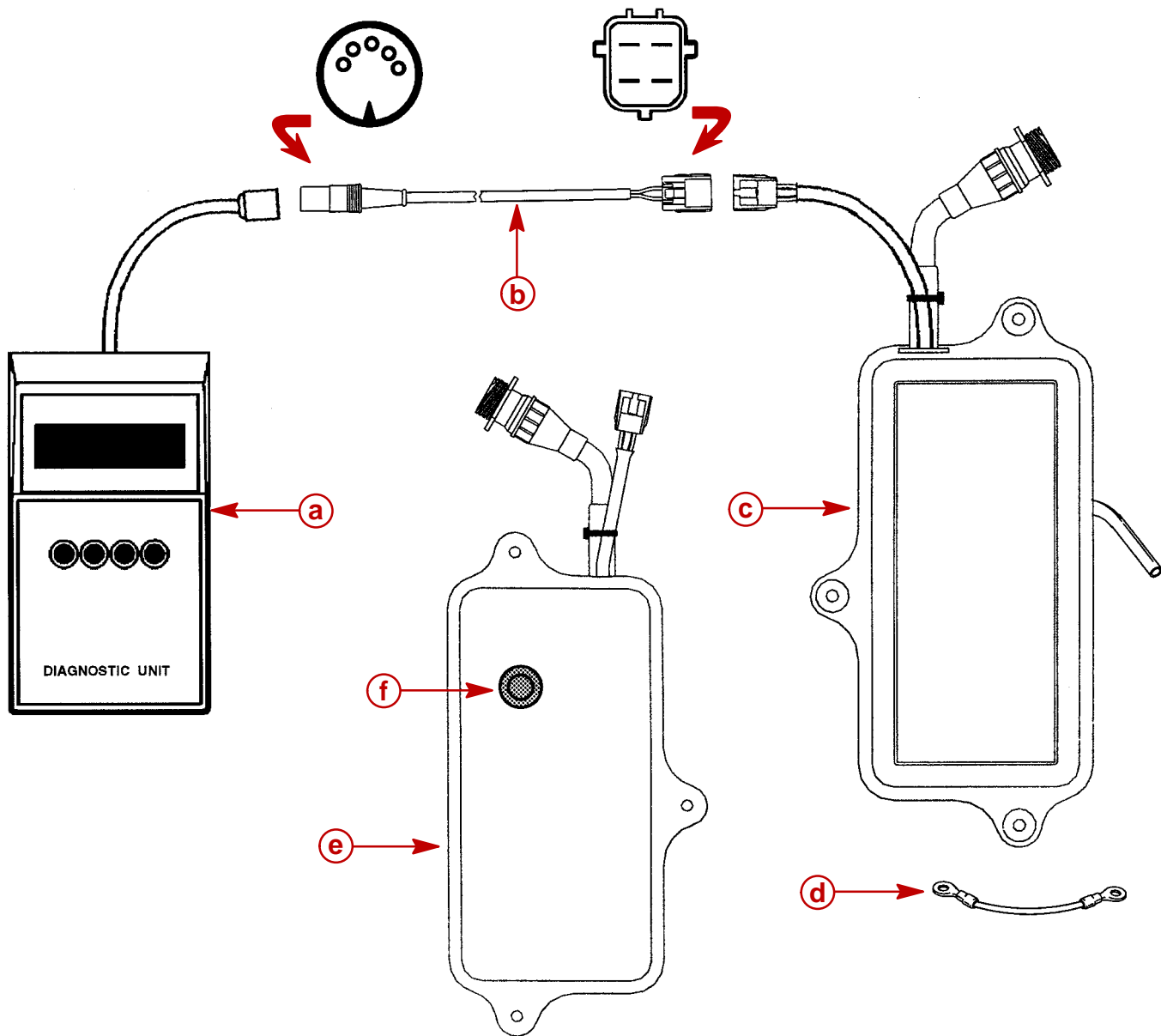
- Refer to Digital Diagnostic Terminal (DDT) manual P/N 90-825159-\_\_ for current Prom Id and Part Number updates.
- When installing a digital ECU on an engine that had an external TPI, plug the TPI engine harness lead with plug 848405.
- Ground straps must be used on all digital ECU boxes.
- High volume fuel pump kit (P/N 848045A8) contains high volume pump (P/N 848045A7) and mounting hardware.
- Use Prom ID to determine proper part number of any Digital ECU box. Many ECU's in the field are labeled with a manufacturing part number that differs from the number used for service.

## Digital Diagnostic Terminal (DDT) Tester



- a-** Digital Diagnostic Terminal (DDT)
- b-** (84-822560A7) 4 Pin Connector Harness
- c-** ECU Box
- d-** Ground Strap
- e-** Back of ECU Box
- f-** Access for Enrichment Adjustment

# Fuel Management System (FMS) Tester



- a-** Fuel Management System (FMS) Tester
- b-** (84-840154) Adapter Harness
- c-** ECU Box
- d-** Ground Strap
- e-** Back of ECU Box
- f-** Access for Enrichment Adjustment