

Circulate to: Sales Manager Accounting Service Manager Technician Parts Manager

The information in this bulletin was originally included as an instruction sheet with all service gearcases for the affected engines listed below. The instruction sheet is no longer sent with service assemblies.

300X Pro Max Service Gearcases

Modles Affected

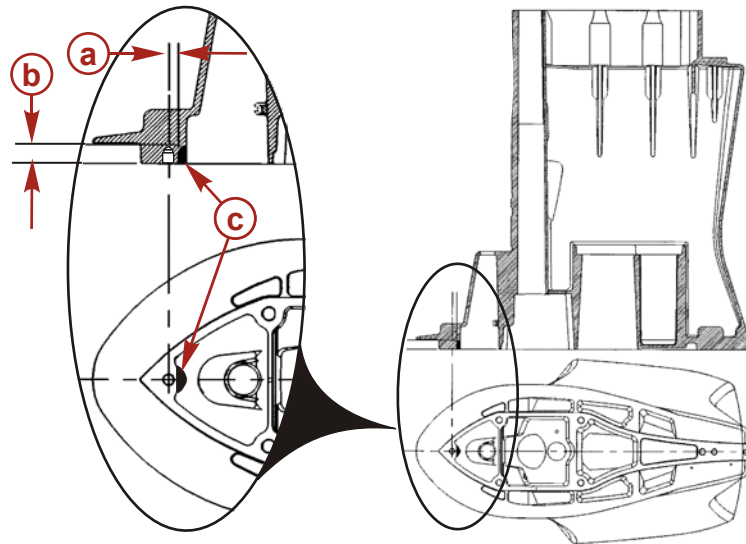
All Mercury Racing 300X Pro Max engines S/N 0T235084 and below.

Situation

Possible interference may occur between the driveshaft housing and shift shaft cover on dual inlet gearcase assemblies.

Solution

To ensure proper clearance, remove/grind the indicated material (shaded area) from the driveshaft housing.



16393

- a** - Distance from centerline of forward dowel pin hole – 8.13 mm (0.320 in.)
- b** - Cutting depth – 15.75 mm (0.620 in.)
- c** - Material to be removed – Radius 6.35 mm (0.250 in.) maximum

THE INFORMATION IN THIS DOCUMENT IS CONFIDENTIAL AND PROTECTED BY COPYRIGHT AND IS THE PROPERTY OF MERCURY MARINE.

This document is provided for the sole and exclusive use of the original recipient as prescribed by Mercury Marine and may not be distributed or copied, digitally or otherwise, without the prior written consent of Mercury Marine.