



PARTS CATALOG

MERC 200

SERIAL NUMBER

200 2827677 THRU 3226957

TABLE OF CONTENTS:

BOTTOM COWL ASSEMBLY	34
CARBURETOR ASSEMBLY	10
CARBURETOR CHOKE LINKAGE	14
CLAMP AND SWIVEL BRACKET ASSEMBLY	38
CRANKSHAFT AND CENTER MAIN BEARING ASSEMBLY	28
CYLINDER BLOCK AND CRANKCASE ASSEMBLY	24
DRIVE SHAFT HOUSING ASSEMBLY	40
FLYWHEEL, STATOR AND IGNITION COIL	6
FUEL PUMP AND FUEL LINE ASSEMBLY	16
GEAR HOUSING ASSEMBLY, COMPLETE (PAGE 1)	44
GEAR HOUSING ASSEMBLY, COMPLETE (PAGE 2)	48
MISCELLANEOUS PARTS/ACCESSORIES	1
PARTS INDEX	50
PISTON AND CONNECTING ROD ASSEMBLY	30
SHIFT CONTROL LINKAGE	18
STEERING HANDLE ASSEMBLY	32
THROTTLE CONTROL LINKAGE	22
TOP COWL AND STARTER ASSEMBLY	2

NOTE: Indented description indicate that these parts are included in preceeding assembly.

AR = As Required

NSS = Not Sold Separate

OPT = Optional

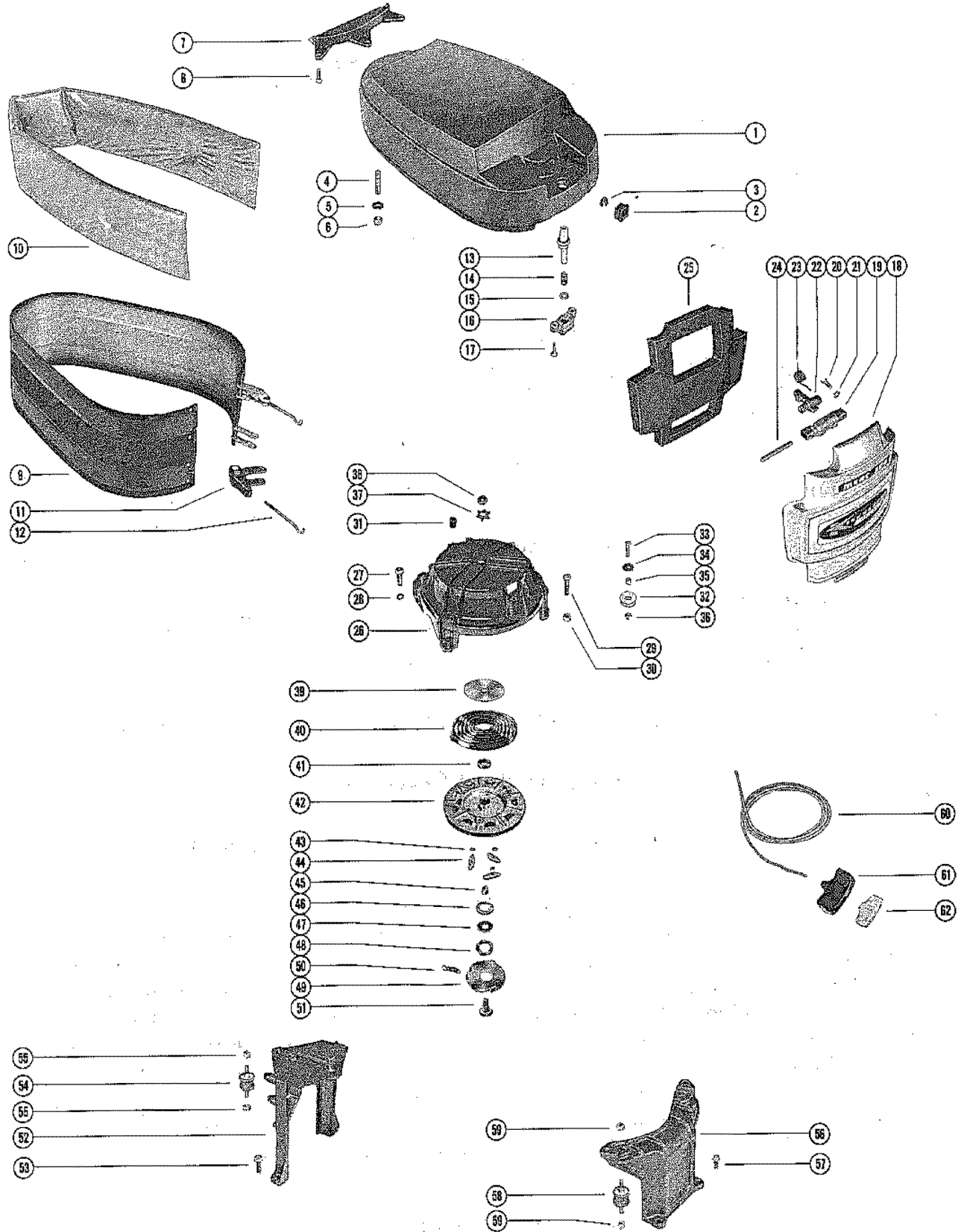
NS = Not Shown

THESE PARTS BOOKS/FICHE CARD ARE COPYRIGHTED AND MAY NOT BE DISTRIBUTED OR REPRODUCED IN ANY OTHER FORMAT BY ANYONE OTHER THAN MERCURY MARINE WITHOUT THE PRIOR WRITTEN CONSENT OF MERCURY MARINE.

MISCELLANEOUS PARTS/ACCESSORIES

REF. NO.	PART NO.	SYM.	QTY.	DESCRIPTION
-	90-56969		0	MERC 200 PARTS LIST
-	27-45088A4		0	GASKET SET (MERC 200)
-	37-56669A1		0	DECAL SET (ENGINE) - MERC 200 SERIAL 02827677-02893425
-	37-56669A2		0	DECAL SET (ENGINE) - MERC 200 SERIAL 02991679-09999999
-	48755A1		0	FLUSHING ASSEMBLY
-	92-25234--1		0	GLUE (BLANKET ADHESIVE)
-	46-48749A3		0	HEAVY DUTY WATER PUMP ASSEMBLY
-	50-47216A2		0	ELECTRIC STARTER MOTOR ASSEMBLY

TOP COWL AND STARTER ASSEMBLY

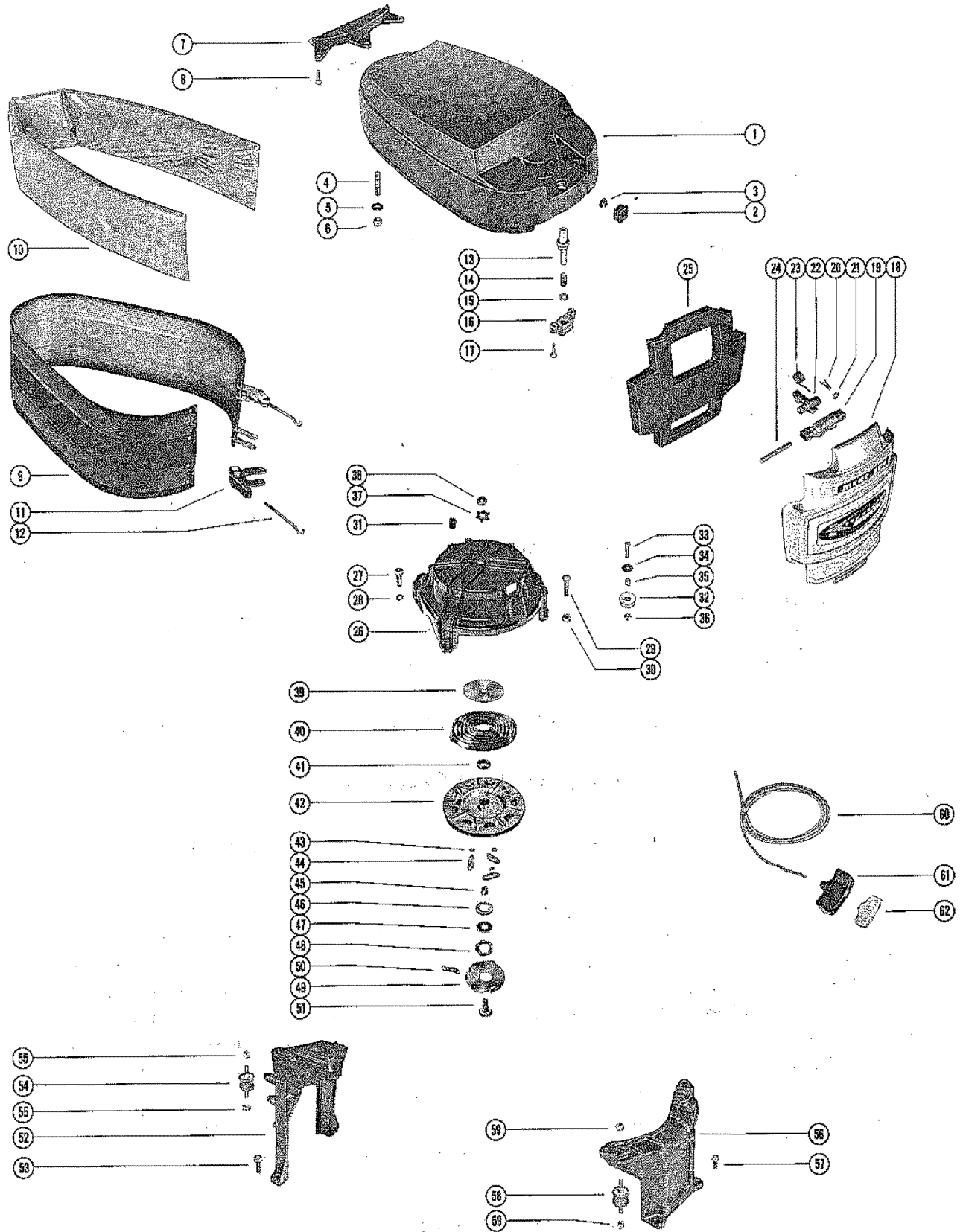


TOP COWL AND STARTER ASSEMBLY

REF. NO.	PART NO.	SYM.	QTY.	DESCRIPTION
1	2130-3974A2		1	TOP COWL ASSEMBLY SERIAL 02827677-02893435
2	39664		1	INSERT, ROPE GUIDE - TOP COWL SERIAL 02827677-02893435
4	16-21553		3	STUD, TOP COWL TO MOUNTING BRACKET (1 1/2") SERIAL 02827677-02893435
1	2130-4361A2		1	TOP COWL ASSEMBLY SERIAL 02991679-09999999
2	58657		1	INSERT, ROPE GUIDE - TOP COWL SERIAL 02991679-09999999
3	53-58656		1	RING, RETAINING - ROPE GUIDE TO TOP COWL SERIAL 02991679-09999999
4	16-21553		3	STUD, TOP COWL TO MOUNTING BRACKETS (1 1/2") SERIAL 02991679-09999999
5	12-20722		3	WASHER, TOP COWL STUD SERIAL 02991679-09999999
6	11-35814		3	NUT, TOP COWL STUD
7	39400		1	SHIELD, REAR - TOP COWL
8	10-37370		3	SCREW, REAR SHIELD TO TOP COWL (5/8")
9	2133-2706A5		1	WRAP AROUND COWL ASSEMBLY, COMPLETE
10	39606		1	BLANKET, SOUND ABSORBING - WRAP AROUND COWL
11	46785A1		2	COWL LATCH ASSEMBLY
12	30413		2	HOOK, COWL LATCH FASTENING
13	39628		1	BUTTON, FRONT COVER RELEASE - TOP COWL
14	24-20099		1	SPRING, COMPRESSION - FRONT COVER RELEASE BUTTON
15	12-29245		1	WASHER, FRONT COVER RELEASE BUTTON
16	39493		1	CATCH, FRONT COVER - TOP COWL
17	10-22523		2	SCREW, FRONT COVER LATCH TO TOP COWL (3/4")
18	2127-2666A6		1	FRONT COVER ASSEMBLY COMPLETE
19	39505		1	BASE, FRONT COVER LATCH
20	10-26500		2	SCREW, LATCH BASE TO FRONT COVER (9/16")
21	12-26014		AR	WASHER, LATCH BASE SCREW
22	39482		1	HOOK, FRONT COVER LATCH
23	24-39598		1	SPRING, TORSION - FRONT COVER LATCH HOOK
24	17-39599		1	PIN, PIVOT - FRONT COVER LATCH HOOK
25	39936		1	BLANKET, SOUND ABSORBING - FRONT COVER
26	57031A2		1	HOUSING ASSEMBLY, STARTER
27	10-37562		1	SCREW, STARTER HOUSING TO CYLINDER BLOCK (1")
28	13-26993		1	LOCKWASHER, STARTER HOUSING TO CYLINDER BLOCK SCREW
29	10-24644		1	SCREW, STARTER HOUSING TO CRANKCASE (1 3/8")
	10-22659		1	SCREW, STARTER HOUSING TO CREANKCASE (1 5/8")
30	11-20361		2	NUT, STARTER HOUSING TO CRANKCASE SCREW
31	47430		1	BUMPER, RUBBER - STARTER HOUSING
32	55860		1	PULLEY, STARTER CABLE
33	10-37892		1	SCREW, PULLEY TO STARTER HOUSING (1")
34	53111		1	RETAINER, PULLEY SCREW
35	23-30977		1	SPACER, PULLEY SCREW

CONTINUED ON NEXT PAGE ➡

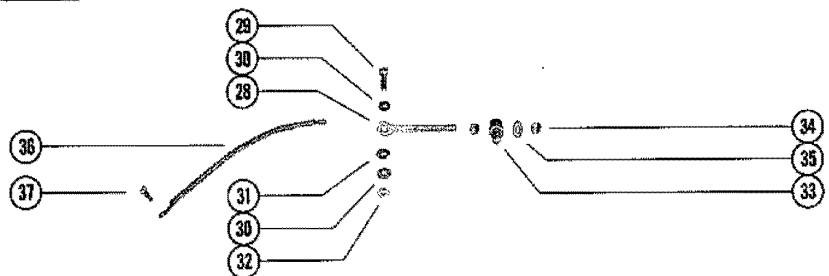
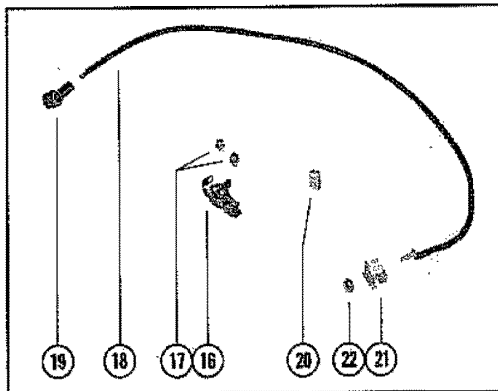
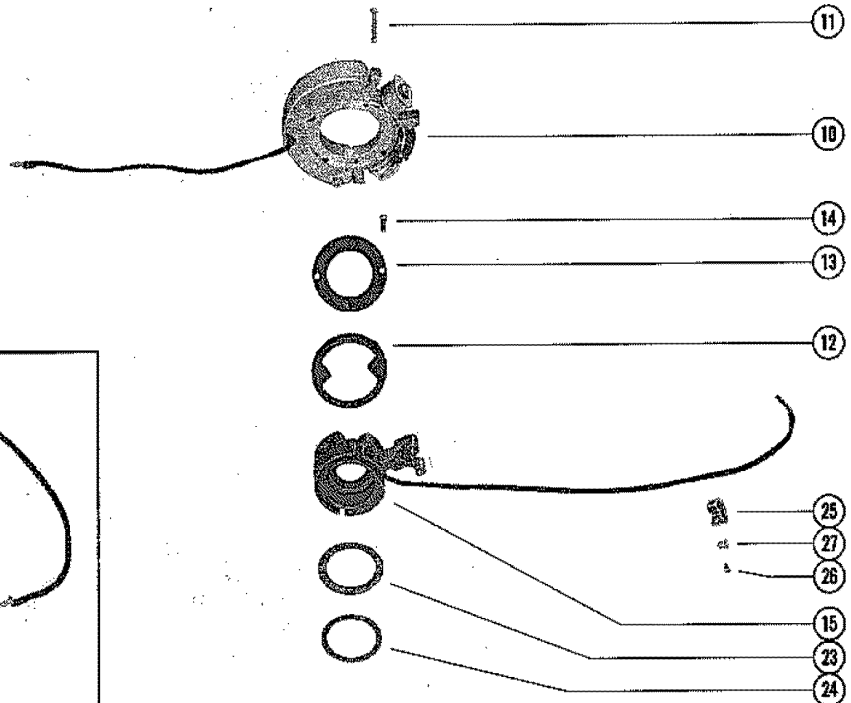
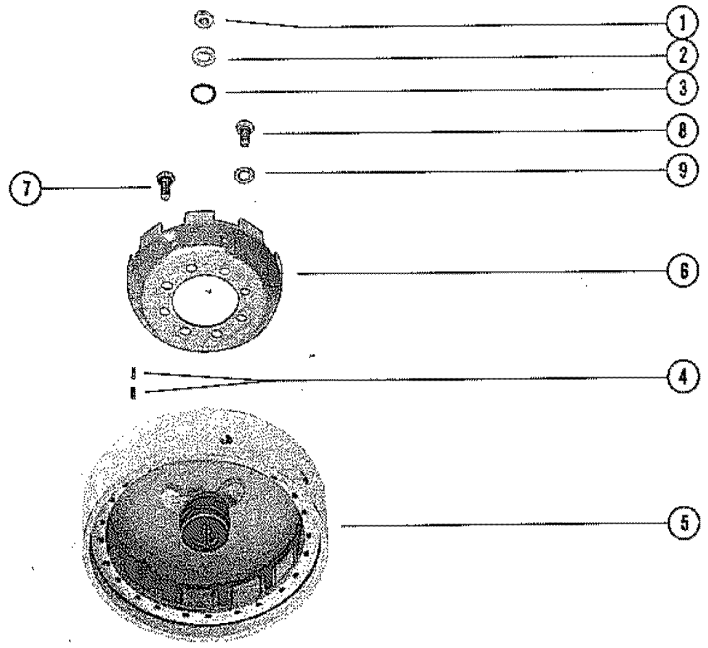
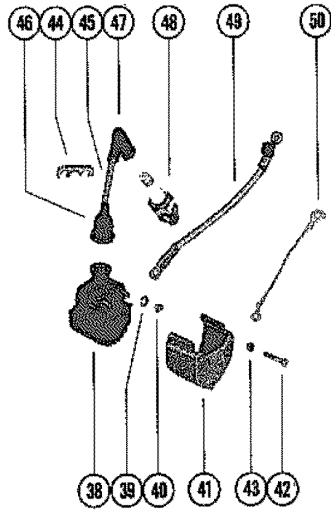
TOP COWL AND STARTER ASSEMBLY



TOP COWL AND STARTER ASSEMBLY

REF. NO.	PART NO.	SYM.	QTY.	DESCRIPTION
36	11-20110		1	NUT, PULLEY SCREW
37	14-20165		1	TAB WASHER, SHEAVE SHAFT NUT
38	11-20166		1	NUT, SHEAVE SHAFT (LEFT HAD THREAD)
39	20155		1	RETAINER, STARTER SPRING
40	24-29340A1		1	SPRING, STARTER REWIND
41	23-20159		1	BUSHING, SPRING GUIDE
42	50-45952		1	STARTER SHEAVE ASSEMBLY
43	13-29720		3	WASHER, WAVE - STARTER PAWL
44	20162		3	PAWL, STARTER
45	23-45482		1	SPACER, SHEAVE SHAFT
46	26179		1	RETAINER, STARTER SHEAVE TO PLATE
47	12-35559		1	WASHER, STARTER SHEAVE RETAINER
48	13-20160		1	WASHER, WAVE - STARTER SHEAVE TENSION
49	20164		1	PLATE, RETAINER - STARTER PAWL
50	24-45823		1	SPRING, PAWL RETAINER PLATE
51	45481		1	SHAFT, SHEAVE
52	56305		1	BRACKET, MOUNTING - TOP COWL (REAR)
53	10-37562		2	SCRE, REAR MOUNTING BRACKET TO BOTTOM COWL (1")
54	57927		1	MOUNT, RUBBER - REAR MOUNTING BRACKET TO CYLINDER BLOCK
55	11-20361		2	NUT, RUBBER MOUNT TO BRACKET AND CYLINDER BLOCK
56	47422		1	BRACKET, MOUNTING - TOP COWL (FRONT)
57	10-37562		2	SCREW, FRONT MOUNTING BRACKET TO BOTTOM COWL (1")
58	57927		2	MOUNT, RUBBER - FRONT MOUNTIN GBRACKET TO CRANKCASE
59	11-20361		4	NUT, RUBBER MOUNT TO BRACKET AND CRANKCASE
60	50-22791A1		1	STARTER CABLE ASSEMBLY
61	30782		1	HANDLE, STARTER CABLE
62	28748		1	RETAINER, STARTER CABLE AND HANDLE

FLYWHEEL, STATOR AND IGNITION COIL

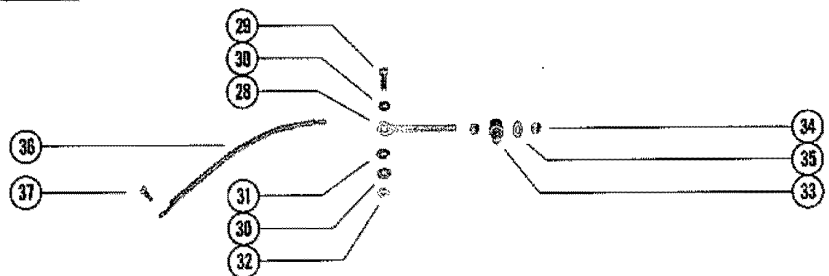
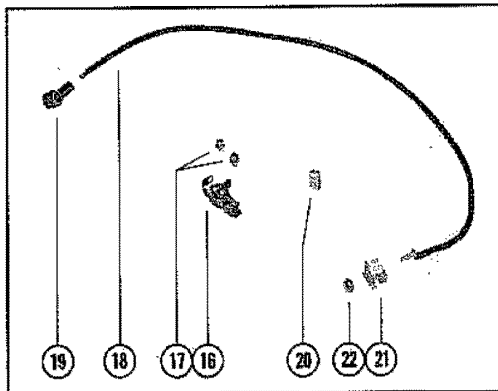
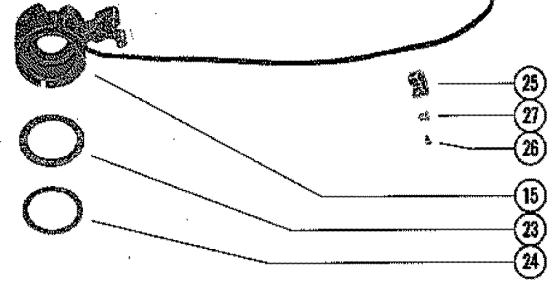
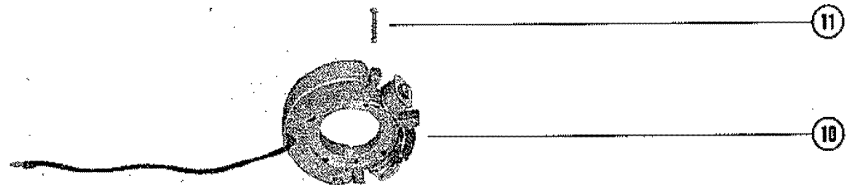
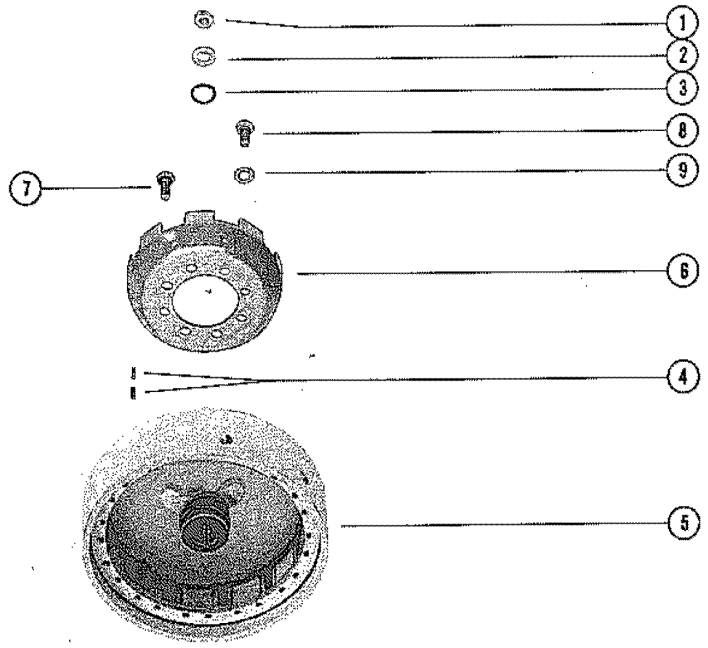
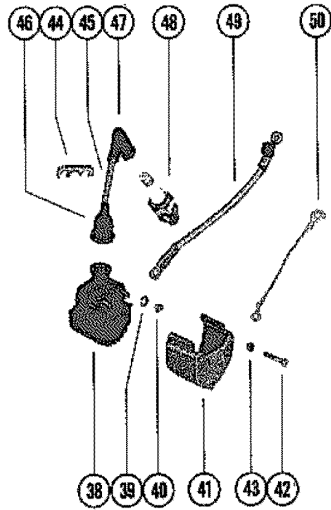


FLYWHEEL, STATOR AND IGNITION COIL

REF. NO.	PART NO.	SYM.	QTY.	DESCRIPTION
1	11-22339		1	NUT, FLYWHEEL
2	12-36281		1	WASHER, FLYWHEEL NUT
3	25-37340		1	"O" RING, FLYWHEEL NUT
4	28-20094		1	KEY, FLYWHEEL DRIVE
5	237-3973A1		1	FLYWHEEL ASSEMBLY
6	50-33000A1		1	RATCHET ASSEMBLY, FLYWHEEL
7	10-35563		6	SCREW, RATCHET TO FLYWHEEL (9/16")
8	10-32417		8	SCREW, RATCHET TO FLYWHEEL (5/8")
9	13-26992		2	LOCKWASHER, RATCHET SCREW
10	336-3996A4		1	STATOR ASSEMBLY SERIAL 02827677-02893435
	336-3996A7		1	STATOR ASSEMBLY SERIAL 02991679-09999999
11	10-57814		4	SCREW, STATOR TO END CAP (1 1/4")
12	336-3987		1	HOLDER, CONTACT HOUSING SERIAL 02827677-02893435
	336-4429		1	HOLDER, CONTACT HOUSING SERIAL 02991679-09999999
13	336-3988A1		1	COVER ASSEMBLY, CONTACT HOUSING
14	10-56336		2	SCREW, COVER TO CONTACT HOUSING(1/2")
15	336-3978A1		1	HOUSING ASSEMBLY, CONTACT
16	336-4318A2		2	MAKER ASSEMBLY, CONTACT HOUSING
17	10-56266		4	SCREW, MAKET TO CONTACT HOUSING(3/8")
18	56316A2		1	CABLE ASSEMBLY, CONTACT HOUSING (WHITE - 17")
	56317A2		1	CABLE ASSEMBLY, CONTACT HOUSING (BROWN - 17 3/4")
19	38938		2	BOOT, CABLE
20	336-3989		1	WICK, CAM WIPER - CONTACT HOUSING
21	336-3981		2	INSULATOR, CABLE TO CONTACT HOUSING
22	11-56325		2	NUT, CABLE INSULATOR
23	12-56077		1	WAHSER, WEAR - CONTACT HOUSING TO CRANKCASE TOP
24	13-59145		1	WASHER, WAVE - CONTACT HOUSING TO CRANKCASE TOP
25	54-26550		3	CLIP, CONTACT HOUSING AND STATOR LEADS
26	10-30663		3	SCREW, CONTACT HOUSING AND STATOR LEADS CLIP ATTACHING
27	22789		3	"D" WASHER, CLIP SCREW
28	56312		1	LINK, THROTTLE - CONTACT HOUSING
29	10-34696		1	SCREW, THROTTLE LINK TO CONTACT HOUSING (3/4")
30	12-34392		2	WASHER, THROTTLE LINK SCREW
31	13-29720		1	WASHER, WAVE - THROTTLE LINK SCREW
32	11-28656		1	NUT, THROTTLE LINK SCREW
33	33973		1	SWIVEL, THROTTLE LINK
34	11-45812		2	NUT, THROTTLE LINK
35	12-30164		1	WASHER, THROTTLE LONK
36	56757A1		1	JUMPER WIRE ASSEMBLY, STATOR TO THROTTLE LINK
37	10-25256		1	SCREW, JUMPTER WIRE ATTACHING (5/16")
38	336-3955A1		2	COIL ASSEMBLY, IGNITION SERIAL 02827677-02893435
	336-4409A1		2	COIL ASSEMBLY, IGNITION SERIAL 02991679-09999999

CONTINUED ON NEXT PAGE ➡

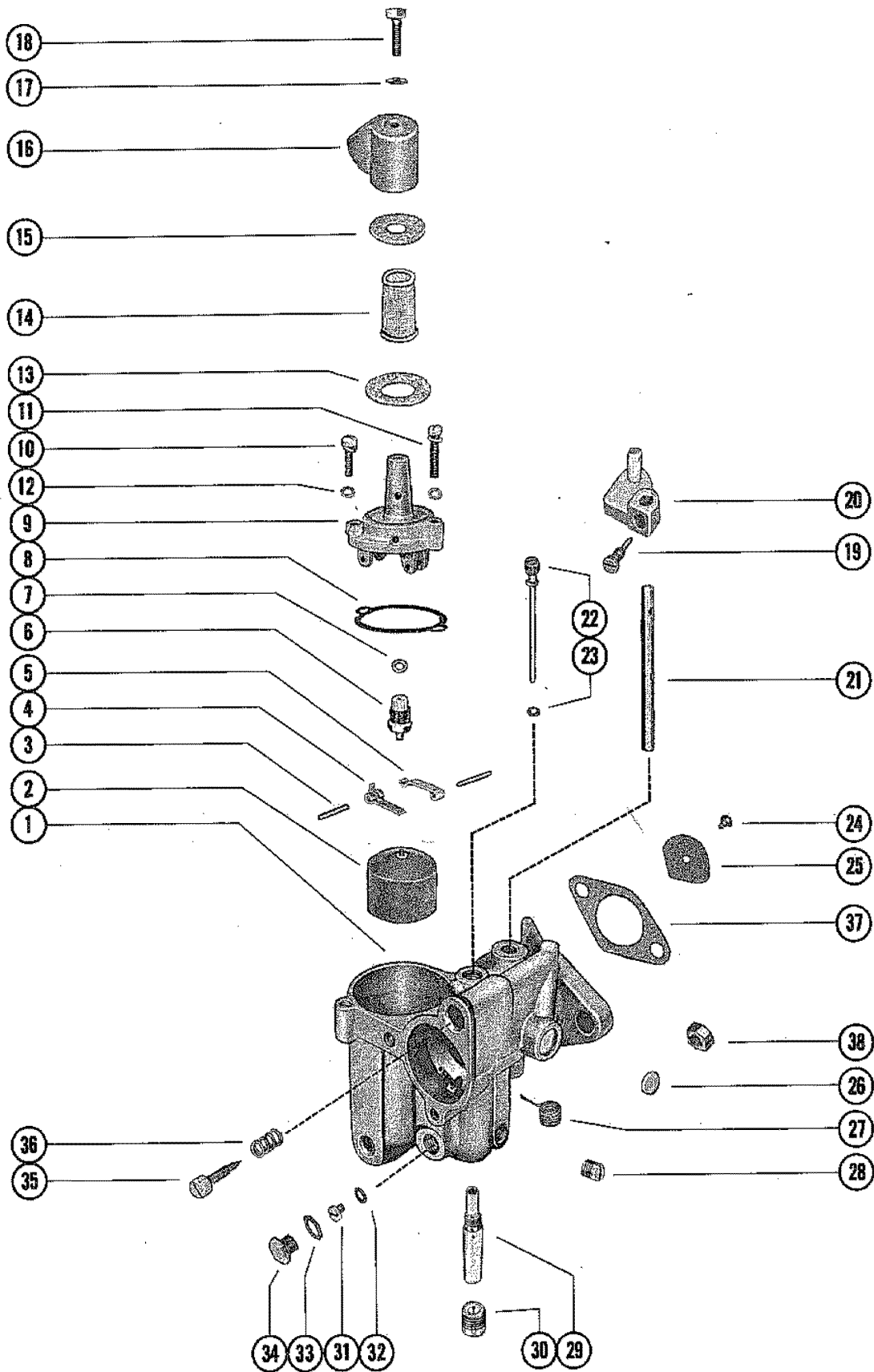
FLYWHEEL, STATOR AND IGNITION COIL



FLYWHEEL, STATOR AND IGNITION COIL

REF. NO.	PART NO.	SYM.	QTY.	DESCRIPTION
39	13-26996		4	LOCKWASHER, IGNITION COIL TERMINAL
40	11-45076		4	0NUT, IGNITION COIL TERMINAL
41	56188		2	COVER, IGNITION COIL
42	10-56311		3	SCREW, COIL COVER TO REAR SUPPORT BRACKET (3 11/16")
43	11-20190		3	NUT, COIL COVER SCREW
44	54676		1	RETAINER, HIGH TENSION LEAD
45	47899A9		2	LEAD ASSEMBLY, HIGH TENSION
46	332-2854		2	NIPPLE, IGNITION COIL
47	47604A1		2	PROTECTOR ASSEMBLY, SPARK PLUG
48	33-58194		2	SPARK PLUG (AC #40FFK)
49	56318A2		1	CABLE ASSEMBLY, COIL TO COIL (5 1/4")
50	394-1134A1		1	GROUND WIRE ASSEMBLY, COIL COVER SCREW

CARBURETOR ASSEMBLY

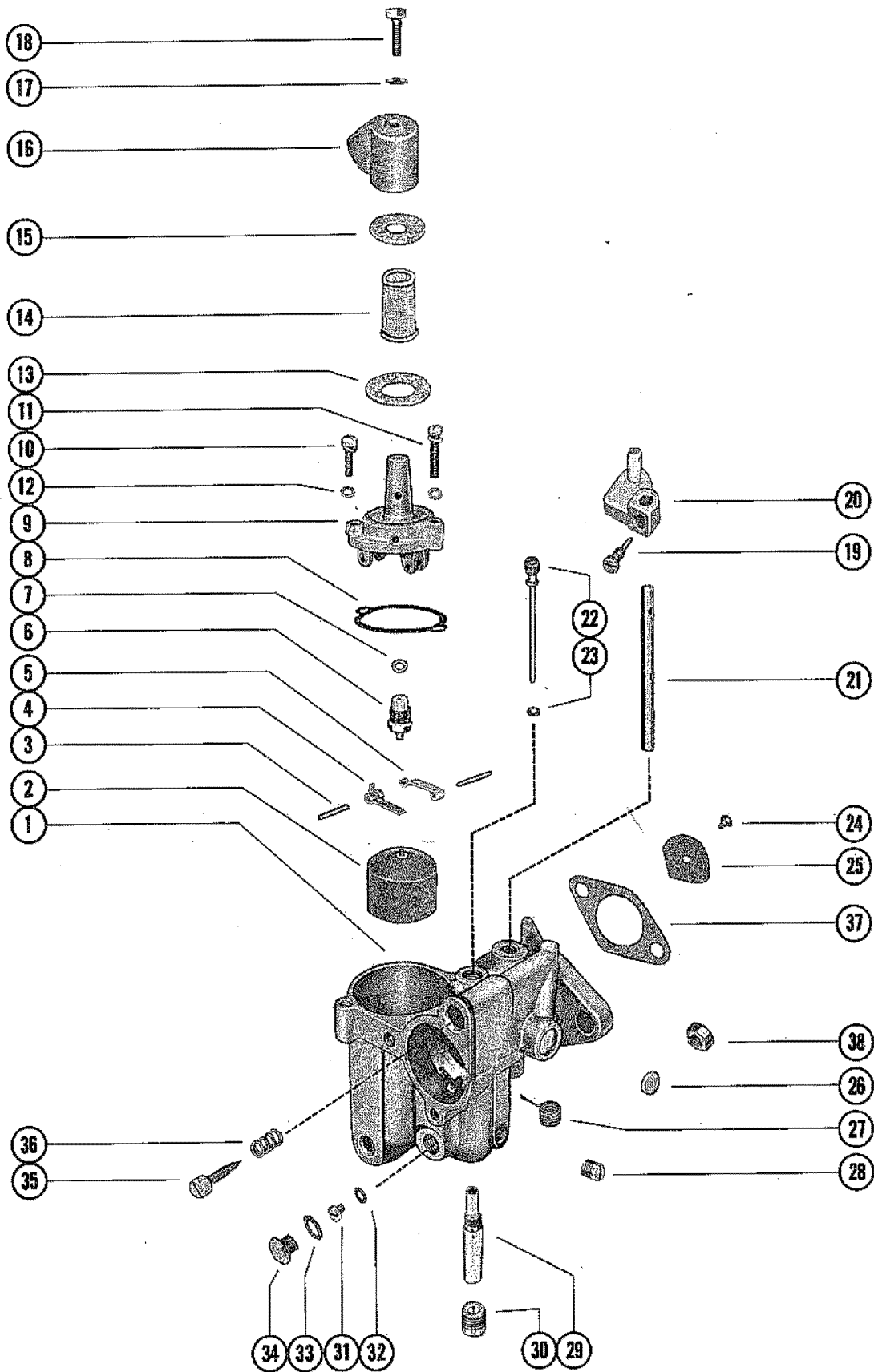


CARBURETOR ASSEMBLY

REF. NO.	PART NO.	SYM.	QTY.	DESCRIPTION
1	1343-4183		1	CARBURETOR ASSEMBLY, COMPLETE (KA-25A)
2	1399-110A1		1	FLOAT ASSEMBLY
3			2	PIN, FLOAT LEVER PINION
4			1	LEVER, FLOAT (LOWER)
5			1	LEVER, FLOAT (UPPER)
6	1399-1473		1	INLET NEEDLE, SEAT AND GASKET
7			1	GASKET, INLET SEAT
8			1	GASKET, FLOAT BOWL COVER
9	1399-1133		1	COVER, FLOAT BOWL
10	10-52195		1	SCREW, FLOAT BOWL COVER (SHORT)
11	10-52196		1	SCREW, FLOAT BOWL COVER (LONG)
12	13-52197		2	LOCKWASHER, FLOAT BOWL COVER SCREW
13			1	GASKET, STRAINER COVER (LARGE)
14	1399-1754		1	SCREEN, FILTER
15			1	GASKET, STRAINER COVER (SMALL)
16	1399-1135		1	COVER, STRAINER
17			1	GASKET, STRAINER COVER SCREW
18	10-25822		1	SCREW, STRAINER COVER
19	10-20847		1	SCREW, THROTTLE CLUSTER
20	46387		1	CLUSTER, THROTTLE
21	1399-2012		1	SHAFT, THROTTLE
22			1	TUBE, IDLE
23			1	GASKET, IDLE TUBE
24			2	SCREW AND LOCKWASHER, THROTTLE SHUTTER
25	1399-3032		1	SHUTTER, THROTTLE
26			1	WELCH PLUG, BODY CHANNEL
27			1	SPRING, THROTTLE SHAFT RETURN
28	10-28845		1	SCREW, PLUG - BODY CHANNEL
29			1	MAIN NOZZLE
30	10-23178		1	SCREW, PLUG - MAIN NOZZLE
31	1399-1461		OPT	JET, MAIN FUEL (.061)
	1399-1459		1	JET, MAIN FUEL (.059) - STANDARD
	1399-1457		OPT	JET, MAIN FUEL (.057)
	1399-1655		OPT	JET, MAIN FUEL (.055)
32			1	GASKET, MAIN FUEL JET
33			1	GASKET, JET CHANNEL PLUG SCREW
34	10-28405		1	SCREW, PLUG - MAIN FUEL JET CHANNEL
35	1399-1713		1	SCREW, IDLE ADJUSTMENT

CONTINUED ON NEXT PAGE ➡

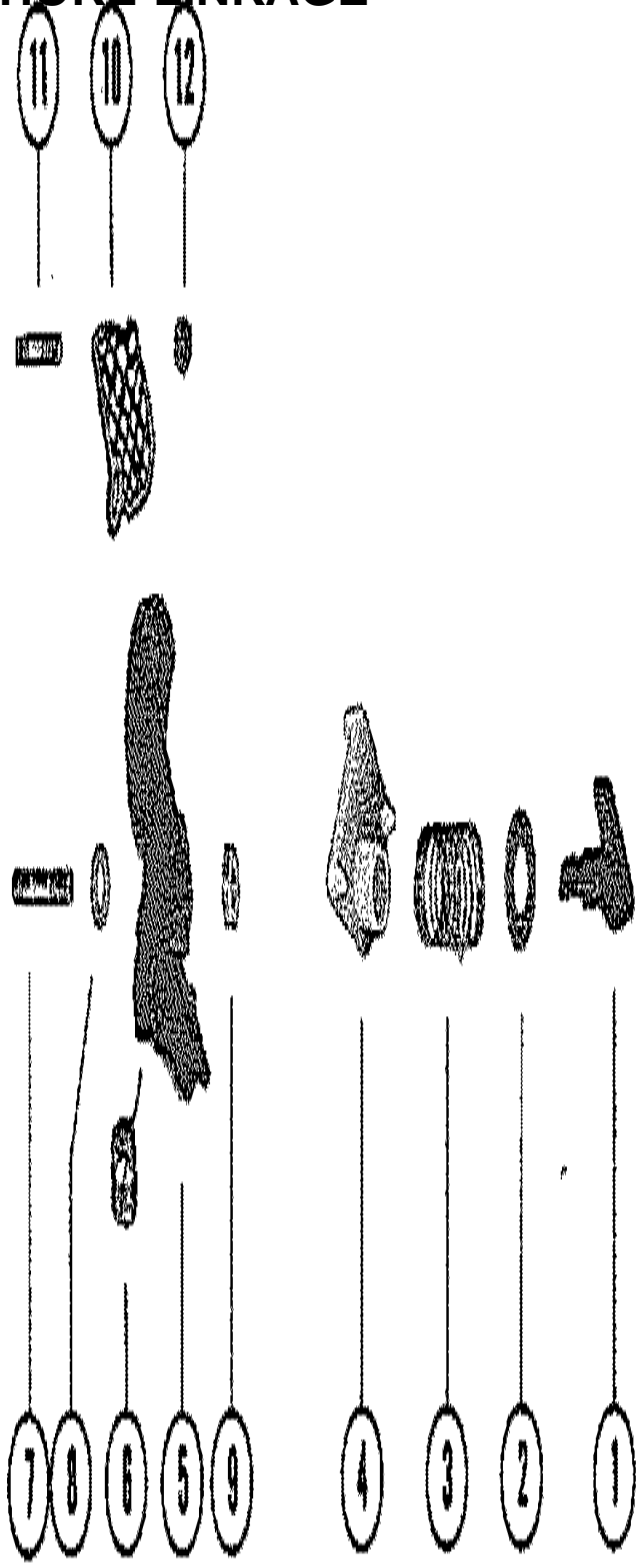
CARBURETOR ASSEMBLY



CARBURETOR ASSEMBLY

REF. NO.	PART NO.	SYM.	QTY.	DESCRIPTION
36			1	SPRING, IDLE ADJUSTMENT SCREW
	1399-2015		1	GASKET AND PACKING SET
	1399-4255		1	REPAIR PARTS KIT
37	27-31402		1	GASKET, CARBURETOR FLANGE
38	11-20083		2	NUT, CARBURETOR MOUNTING STUDS

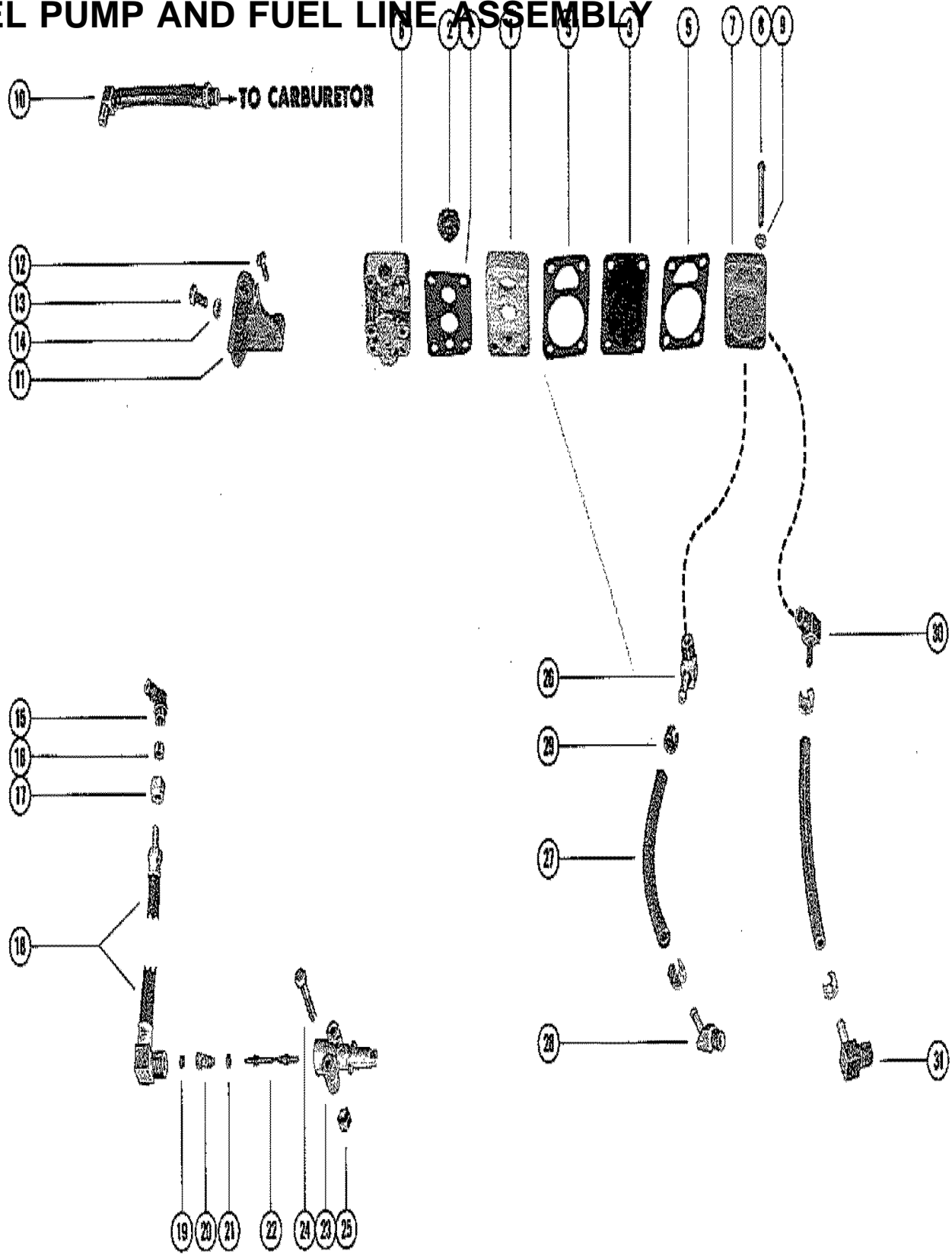
CARBURETOR CHOKE LINKAGE



CARBURETOR CHOKE LINKAGE

REF. NO.	PART NO.	SYM.	QTY.	DESCRIPTION
1	47932		1	KNOB AND SHAFT, CHOKE
2	12-30314		1	WASHER, NYLON - CHOKE KNOB AND SHAFT
3	24-47968		1	SPRING, TENSION - CHOKE KNOB AND SHAFT
4	47933		1	LEVER, CHOKE SHUTTER
5	53559		1	SHUTTER, CHOKE - CARBURETOR
6	24-47898		1	SPRING, TORSION - CHOKE SHUTTER TENSION
7	16-53050		1	STUD, CHOKE SHUTTER TO CARBURETOR (1 7/16")
8	12-47960		1	WASHER, CHOKE SHUTTER STUD
9	11-20110		1	NUT, CHOKE SHUTTER STUD
10	35-53596		1	SCREEN, FILTER - CARBURETOR
11	16-53820		1	STUD, CARBURETOR SCREEN TO CARBURETOR (1 1/16")
12	11-20110		1	NUT, CARBURETOR SCREEN STUD

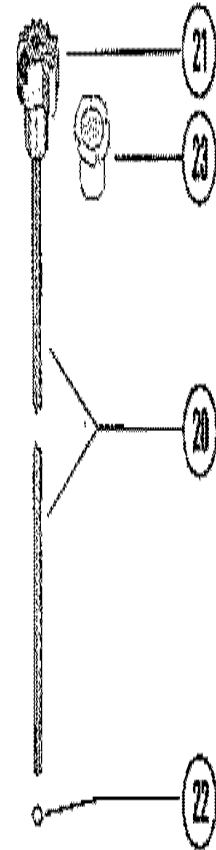
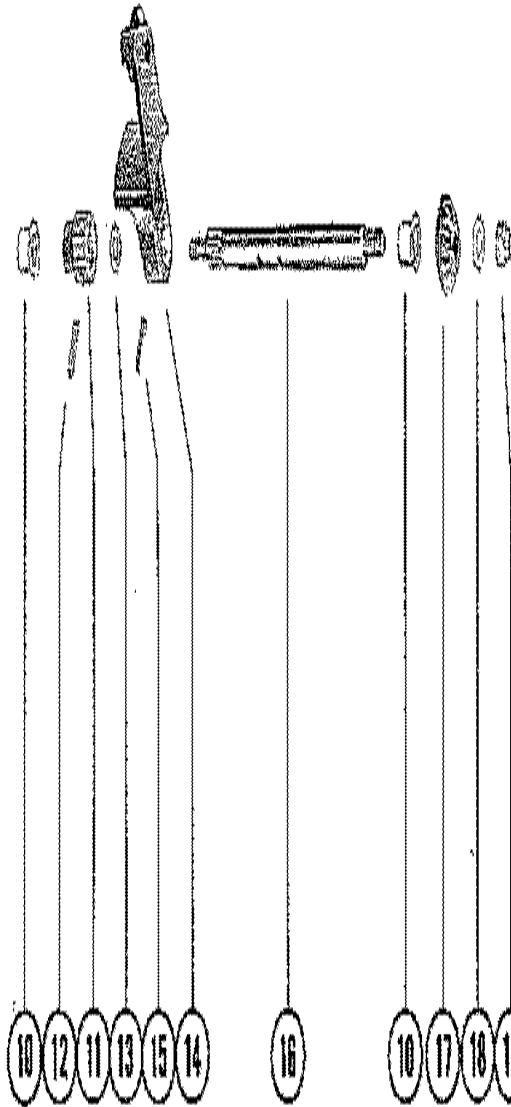
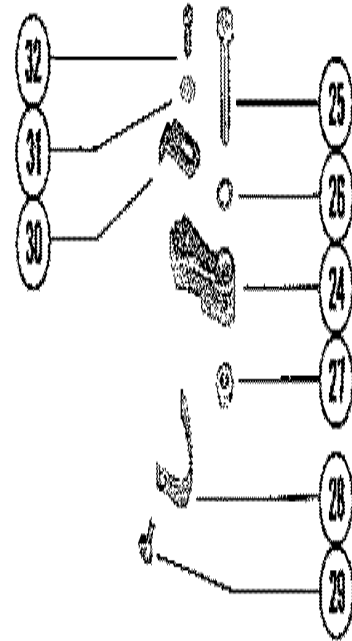
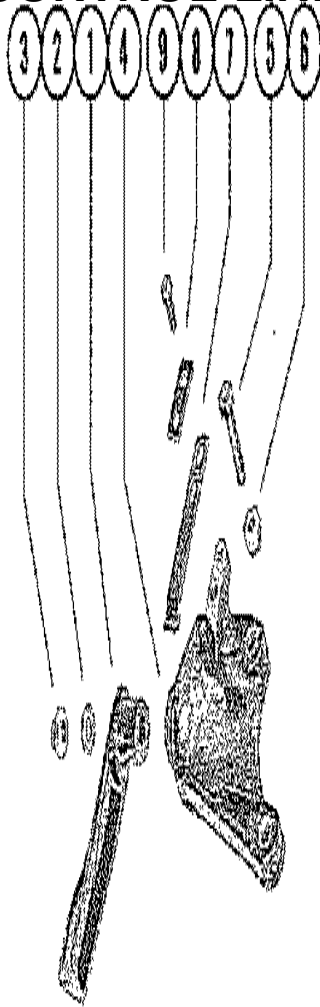
FUEL PUMP AND FUEL LINE ASSEMBLY



FUEL PUMP AND FUEL LINE ASSEMBLY

REF. NO.	PART NO.	SYM.	QTY.	DESCRIPTION
1	53238A3		1	FUEL PUMP ASSEMBLY
2	21-30430A2		1	CHECK VALVE ASSEMBLY
3	53245A1		1	DIAPHRAGM KIT, FUEL PUMP
4			1	GASKET, FUEL PUMP TO BASE
5			2	GASKET, FUEL PUMP
6	53241		1	BASE, FUEL PUMP
7	53545		1	COVER, FUEL PUMP
8	10-32627		4	SCREW, FUEL PUMP TO BASE (1 1/2")
9	12-20128		4	WASHER, FUEL PUMP SCREWS
10	32-54429		1	FUEL LINE, FUEL PUMP TO CARBURETOR (6 1/2")
11	53544		1	BRACKET, FUEL PUMP TO CRANKCASE
12	10-29200		2	SCREW, BRACKET TO FUEL PUMP (5/8")
13	10-45862		1	SCREW, FUEL PUMP BRACKET TO CRANKCASE (3/4")
14	11-46438		1	NUT, FUEL PUMP BRACKET SCREW
15	22-22995		1	FITTING, INLET - FUEL PUMP
16	22-22946		1	SLEEVE, RUBBER - FUEL PUMP INLET FITTING
17	22-22948		1	NUT, FUEL PUMP INLET FITTING
18	32-48019		1	FUEL LINE, INLET - ADAPTOR TO FUEL PUMP
19	30188		1	CUP WASHER, ADAPTOR
20	24-23067		1	SPRING, ADAPTOR STEM
21	25-20415		1	"O" RING, ADAPTOR STEM
22	23069		1	STEM, CHECK UNIT ADAPTOR
23	22833		1	ADAPTOR, CHECK UNIT
24	10-20784		2	SCREW, CHECK UNIT ADAPTOR TO BOTTOM COWL (1 1/2")
25	11-20361		2	NUT, CHECK UNIT ADAPTOR SCREW
26	22-54064		1	CONNECTOR, HOSE TO FUEL PUMP(NOT AS SHOWN)
27	32-48638		2	HOSE, FUEL PUMP TO CYLINDER BLOCK (2 3/8")
28	22-53553		1	ELBOW, HOSE TO CYLINDER BLOCK (45)
29	54-20387		4	CLAMP, FUEL PUMP HOSE TO ELBOWS
30	22-54090		1	ELBOW, HOSE TO FUEL PUMP (90)
31	22-33373		1	ELBOW, HOSE TO CYLINDER BLOCK (90)

SHIFT CONTROL LINKAGE

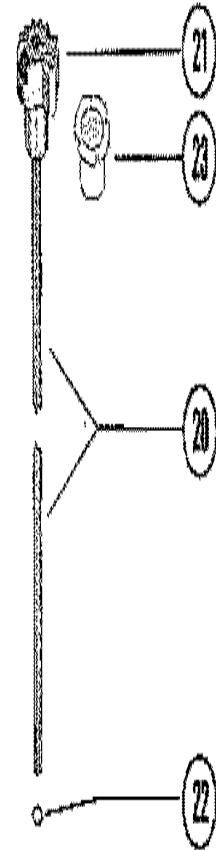
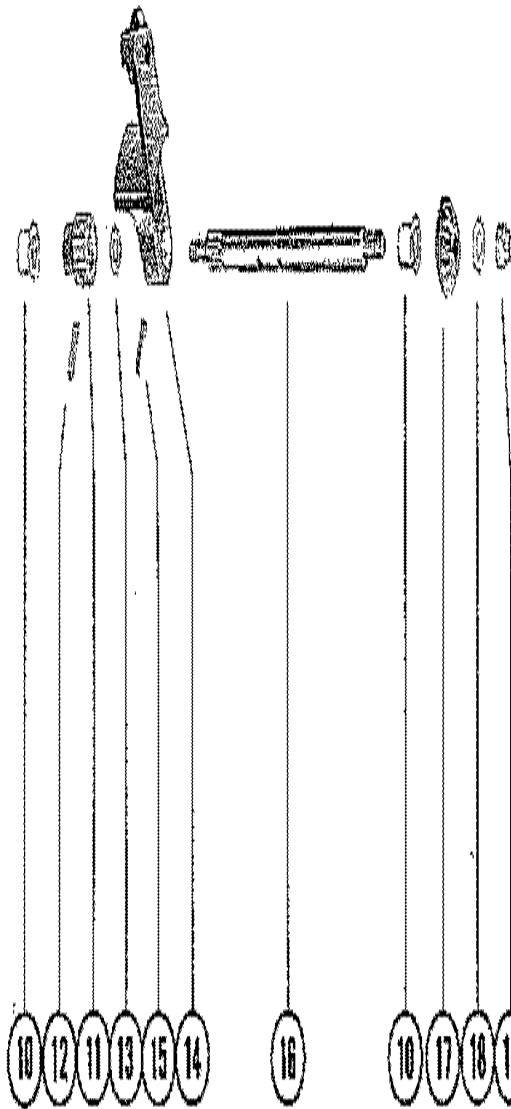
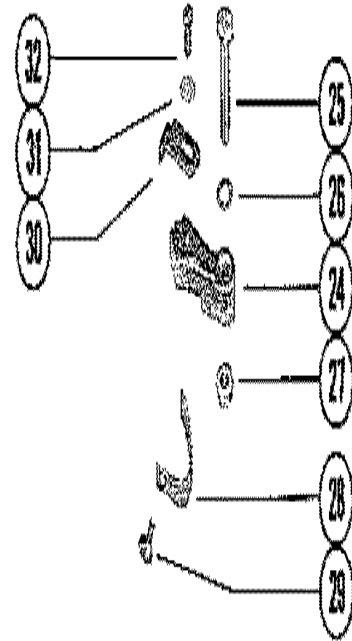
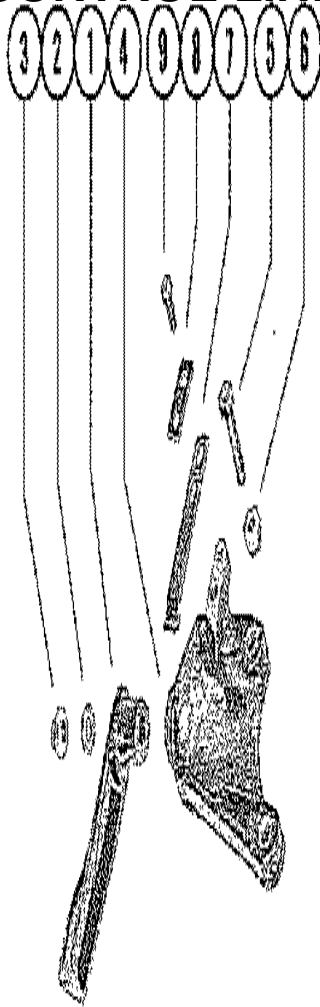


SHIFT CONTROL LINKAGE

REF. NO.	PART NO.	SYM.	QTY.	DESCRIPTION
1	39323		1	HANDLE, NYLON - SHIFT CONTROL SERIAL 02827677-02893435
	59107		1	HANDLE, NYLON - SHIFT CONTROL SERIAL 02991679-09999999
2	12-29245		1	WASHER, SHIFT CONTROL HANDLE
3	11-39305		1	NUT, SHIFT CONTROL HANDLE TO SHIFT SHAFT
4	39399		1	BRACKET, MOUNTING - SHIFT SHAFT
5	10-22421		2	SCREW, MOUNTING BRACKET TO POWERHEAD PLATE (1 1/4")
6	11-46887		2	NUT, MOUNTING BRACKET SCREW
7	24-39627		1	SPRING, DETENT - MOUNTING BRACKET
8	39601		1	PLATE, DETENT SPRING
9	10-20100		2	SCREW, PLATE AND SPRING TO MOUNTING BRACKET (1/2")
10	23-30678		2	BUSHING, NYLON - SHIFT SHAFT
11	39588		1	CAM, DETENT - SHIFT SHAFT
12	17-25905		1	PIN, ROLL - DETENT CAM TO SHIFT SHAFT
13	13-36206		1	WASHER, WAVE - SHIFT SHAFT
14	39415		1	LEVER, SHIFT CONTROL
15	17-25905		1	PIN, ROLL - SHIFT CONTROL LEVER TO SHIFT SHAFT
16	39632		1	SHAFT, SHIFT (HORIZONTAL)
17	43-33994		1	GEAR, SECTOR - SHIFT SHAFT SERIAL 02827677-02893435
	43-30802		1	GEAR, SECTOR - SHIFT SHAFT SERIAL 02991679-09999999
18	12-29245		1	WASHER, SHIFT SHAFT
19	11-20361		1	NUT, SECTOR GEAR TO SHIFT SHAFT
20	56828A1		1	SHIFT CONTROL SHAFT ASSEMBLY, VERTICAL SERIAL 02827677-02893435
21	43-39477		1	GEAR, SECTOR - SHIFT CONTROL SHAFT SERIAL 02827677-02893435
20	56828A2		1	SHIFT CONTROL SHAFT ASSEMBLY, VERTICAL SERIAL 02991679-09999999
21	43-58972		1	GEAR, SECTOR - SHIFT CONTROL SHAFT SERIAL 02991679-09999999
22	25-38933		1	"O" RING, SHIFT CONTROL SHAFT
23	23-30677		1	BUSHING, NYLON - SHIFT CONTROL SHAFT
24	46836		1	FOLLOWER, NEUTRAL SPEED LIMITER SERIAL 02827677-02893435
	58979		1	FOLLOWER, NEUTRAL SPEED LIMITER SERIAL 02991679-09999999
25	10-24644		1	SCREW, FOLLOWER TO POWERHEAD MOUNTING PLATE (1 3/4")
26	15-28212010		1	SHIM, LIMITER FOLOWER SCREW
27	11-46887		1	NUT, LIMITER FOLLOWER SCREW

CONTINUED ON NEXT PAGE ➡

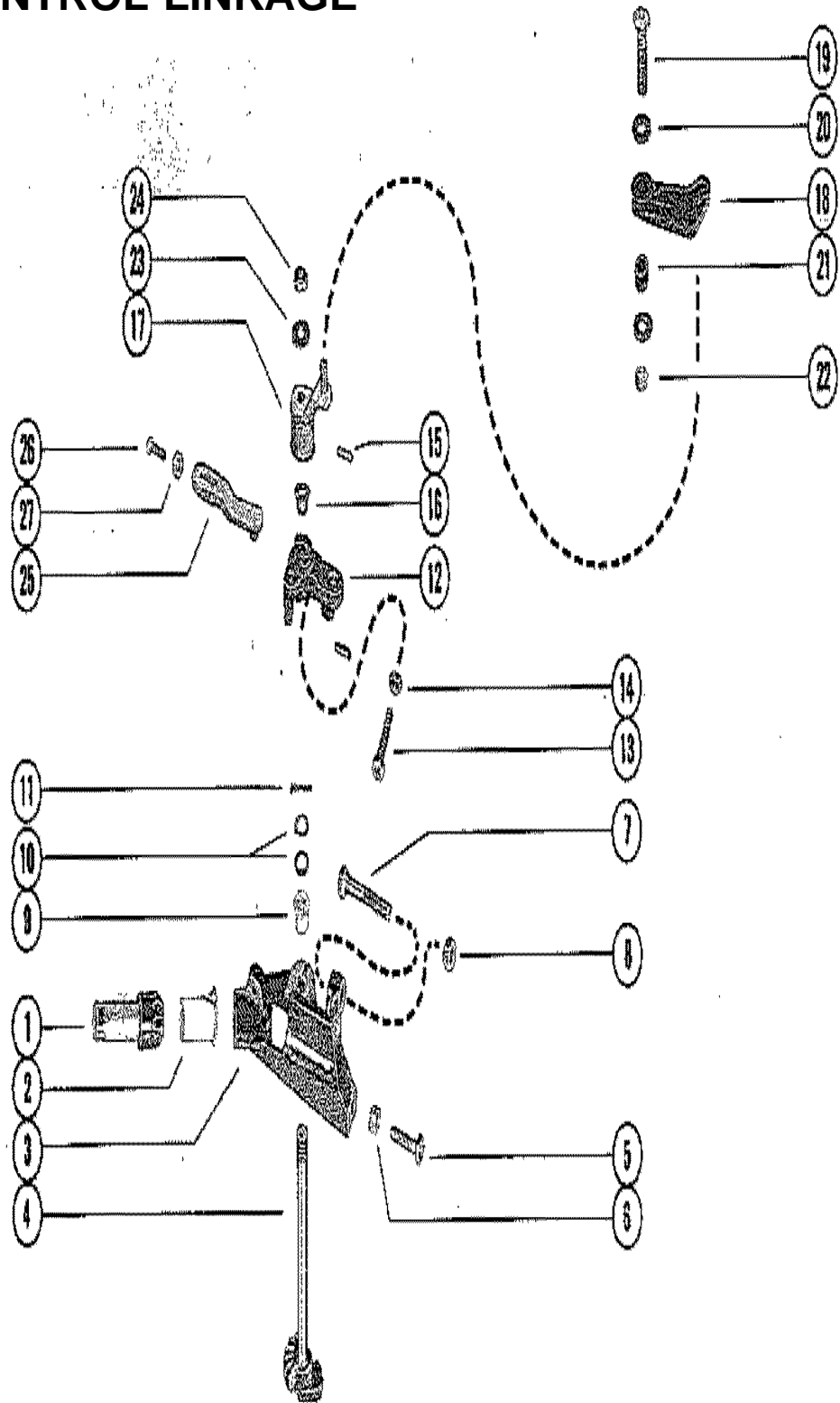
SHIFT CONTROL LINKAGE



SHIFT CONTROL LINKAGE

REF. NO.	PART NO.	SYM.	QTY.	DESCRIPTION
28	24-39675		1	SPRING, NEUTRAL SPEED LIMITER FOLLOWER
29	10-30663		1	SCREW, SPRING TO LIMITER FOLLOWER (3/8")
30	46837		1	STOP, OVER-SPEED LIMITER
31	12-24676		1	WASHER, LIMITER STOP SCREW
32	10-46898		1	SCREW, LIMITER STOP TO FOLLOWER (7/16")

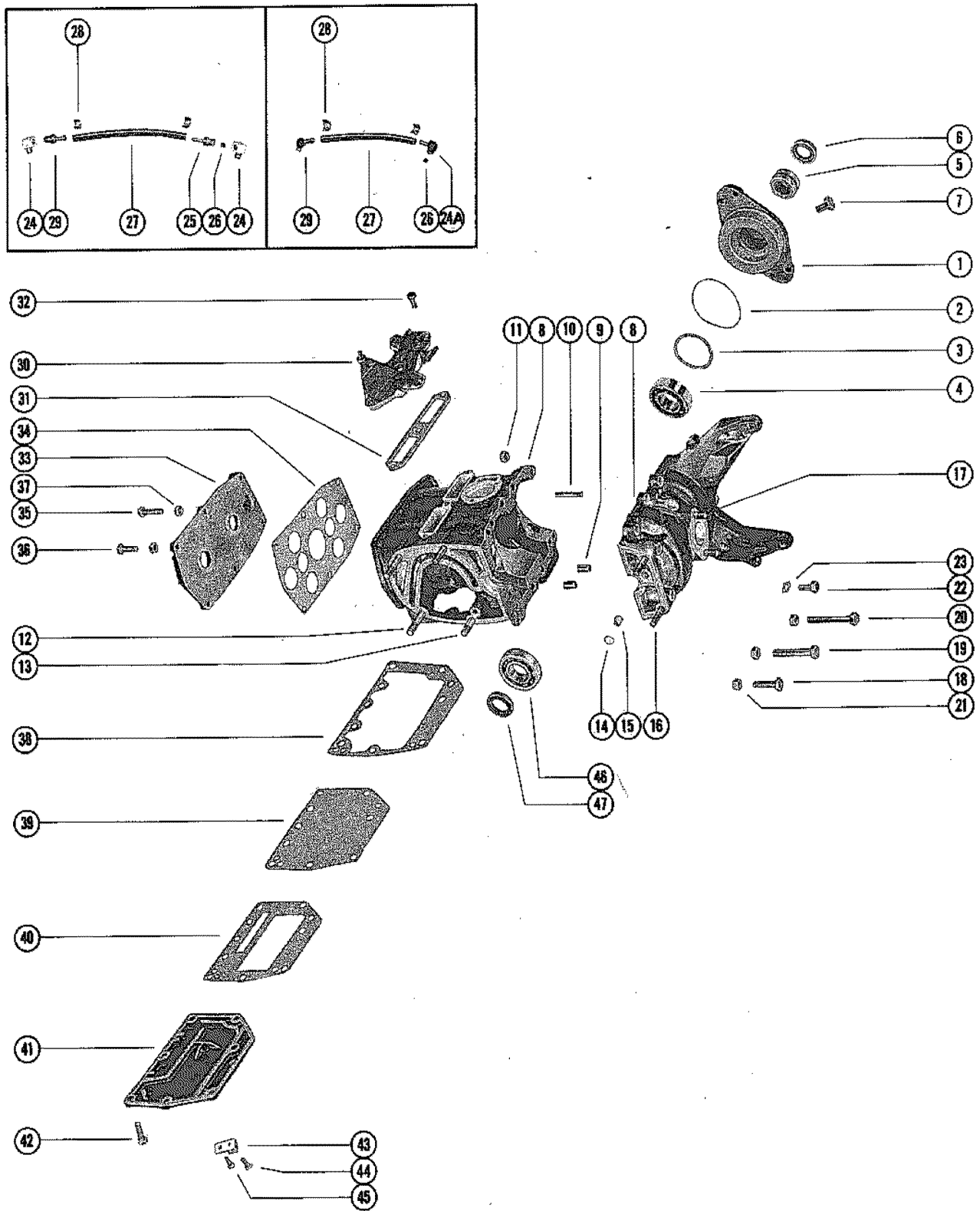
THROTTLE CONTROL LINKAGE



THROTTLE CONTROL LINKAGE

REF. NO.	PART NO.	SYM.	QTY.	DESCRIPTION
1	43-39478		1	GEAR, PINION - THROTTLE CONTROL
2	23-31011		1	BUSHING, NYLON - THROTTLE CONTROL HOUSING
3	48662		1	HOUSING, THROTTLE CONTROL
4	43-46383		1	SHAFT AND GEAR, THROTTLE
5	10-20653		1	SCREW, THROTTLE CONTROL HOUSING FASTENING (1")- LOWER
6	11-46887		1	NUT, THROTTLE CONTROL HOUSING SCREW
7	10-21091		1	SCREW, THROTTLE CONTROL HOUSING FASTENING (1 1/8") - UPPER
8	11-46887		1	NUT, THROTTLE CONTROL HOUSING SCREW
9	23-33462		1	BUSHING, NYLON - SHAFT AND GEAR (THROTTLE CONTROL HOUSING)
10	12-48679		1	WASHER, THROTTLE SHAFT AND GEAR
11	17-48660		1	PIN, THROTTLE SHAFT AND GEAR
12	46413		1	THROTTLE LEVER, VERTICAL SHAFT
13	10-22960		2	SCREW, VERTICAL SHAFT THROTTLE LEVER (1 3/8")
14	11-25168		2	NUT, VERTICAL SHAFT THROTTLE LEVER SCREW
15	17-24865		2	PIN, GROOVE - STATOR PLATE LEVER TO VERTICAL SHAFT
16	23-48661		1	BUSHING, CYLON - STATOR PLATE LEVER
17	57024		1	LEVER, STATOR PLATE - VERTICAL SHAFT
18	56700		1	LEVER, STATOR PLATE CONTROL
19	10-22659		1	SCREW, STARTER HOUSING TO CRANKCASE (1 5/8")
20	12-57029		2	WASHER, STARTER HOUSING SCREW(PART OF STARTER HOUSING ASSY)
21	23-46406		1	BUSHING, STATOR PLATE CONTROL LEVER
22	11-20361		1	NUT, STARTER HOUSING TO CRANKCASE SCREW
23	12-24664		1	WASHER, SHAFT AND GEAR
24	11-20586		1	NUT, SHAFT AND GEAR
25	46405		1	LINK, THROTTLE CLUSTER
26	10-25876		1	SCREW, THROTTLE CLUSTER LINK
27	11-20645		1	NUT, JAM - THROTTLE CLUSTER LINK SCREW

CYLINDER BLOCK AND CRANKCASE ASSEMBLY

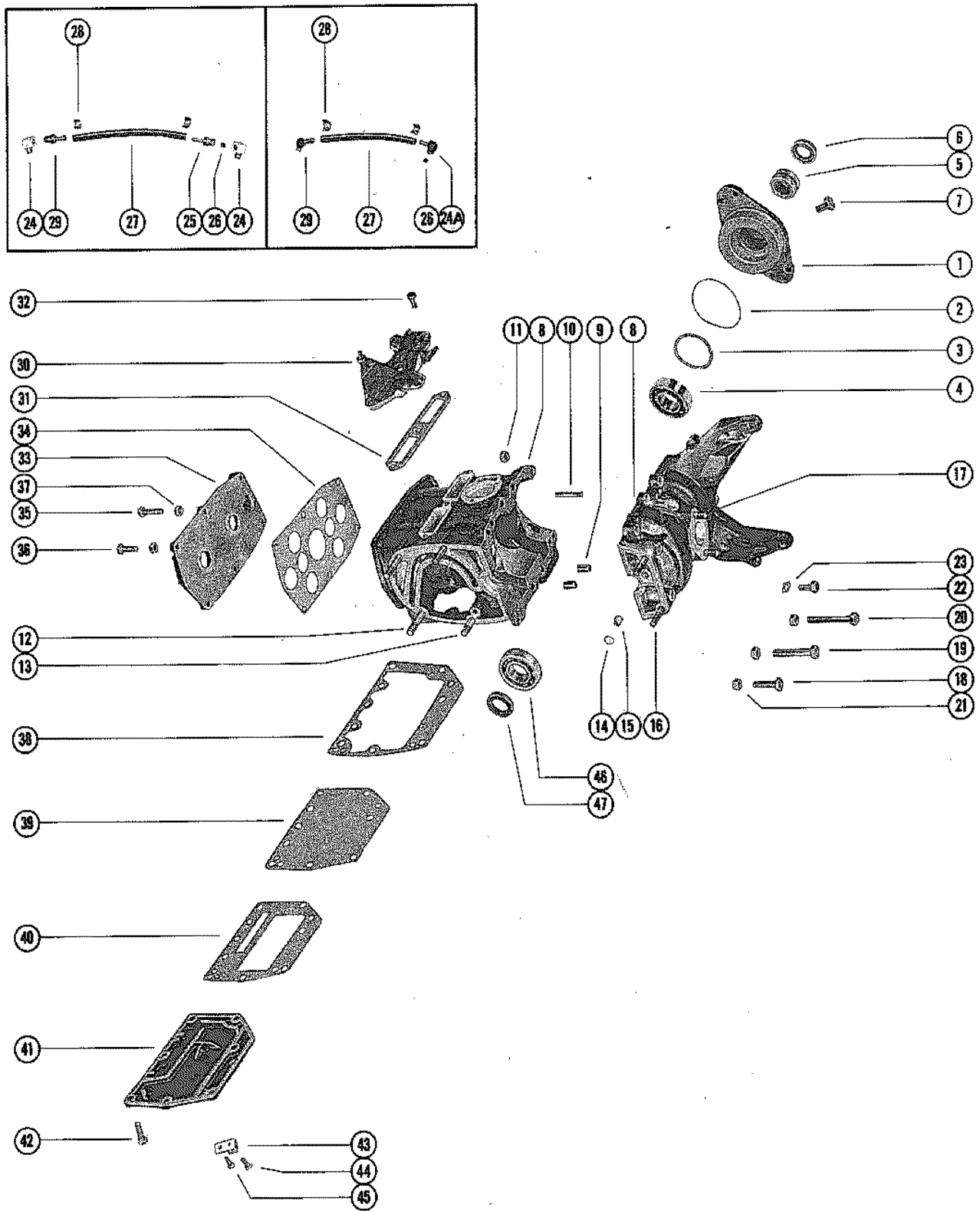


CYLINDER BLOCK AND CRANKCASE ASSEMBLY

REF. NO.	PART NO.	SYM.	QTY.	DESCRIPTION
1	1142-3986A1		1	CRANKCASE TOP ASSEMBLY
2	25-20081		1	"O" RING, CRANKCASE TOP
3	15-56191A1		AR	SHIM, BALL BEARING TO CRANKCASE TOP (.002-3-5-10)
4	30-54215		1	BEARING, BALL - CRANKCASE TOP (UPPER)
5	31-20594		1	BEARING, ROLLER - CRANKCASE TOP (UPPER)
6	26-56747		1	OIL SEAL, CRANKCASE TOP (UPPER)
7	10-57098		3	SCREW, CRANKCASE TOP TO CYLINDER BLOCK AND CRANKCASE (3/4")
8	848-3999A3		1	CYLINDER BLOCK AND CRANKCASE ASSEMBLY
9	17-23784		2	PIN, DOWEL - CRANKCASE TO CYLINDER BLOCK
10	16-20462		2	STUD, CRANKCASE TO CYLINDER BLOCK)1 5/16")
11	11-46793		2	NUT, CRANKCASE STUD
12	16-39766		2	STUD, CYLINDER BLOCK TO DRIVE SHAFT HOUSING (2 1/8")
13	16-20991		2	STUD, CYLINDER BLOCK TO DRIVE SHAFT HOUSING (1 5/8")
14	19-20011		2	WELCH PLUG, CRANKCASE AND CYLINDER BLOCK
15	21-27146A1		1	CHECK VALVE ASSEMBLY, CRANKCASE
16	16-20991		2	STUD, CRANKCASE TO DRIVE SHAFT HOUSING (1 5/8")
17	16-23740		2	STUD, CARBURETOR TO CRANKCASE (1 3/32")
18	10-26066		5	SCREW, CRANKCASE TO CYLINDER BLOCK (1 1/4")
19	10-26065		1	SCREW, CRANKCASE TO CYLINDER BLOCK (1")
	10-21449		2	SCREW, CRANKCASE TO CYLINDER BLOCK (2")
20	10-26132		2	SCREW, CRANKCASE TO CYLINDER BLOCK (2 1/2")
21	11-46793		10	NUT, CRANKCASE SCREW
22	10-46801		1	SCREW, LOCK - CENTER MAIN BEARING (5/8")
23	14-20091		1	TAB WASHER, CENTER MAIN BEARING LOCK SCREW
24	22-23125		2	ELBOW, BLEED HOSE TO CYLINDER BLOCK SERIAL 02827677-02832721
25	21-28483A1		1	CHECK VALVE AND HOSE CONNECTOR ASSEMBLY, BLEED HOSE SERIAL 02827677-02832721
26	21-28481A1		1	CHECK VALVE ASSEMBLY SERIAL 02827677-02832721
27	32-32840A1		1	HOSE, BLEED - CYLINDER BLOCK (5") SERIAL 02827677-02832721
28	54-20386		2	CLAMP, BLEED HOSE ATTACHING SERIAL 02827677-02832721
29	22-57785		1	FITTING, BLEED HOSE ELBOW SERIAL 02827677-02832721
24A	21-55621A1		1	CHECK VALVE ASSEMBLY, BLEED HOSE SERIAL 02832722-09999999
26	21-28481A1		1	CHECK VALVE ASSEMBLY SERIAL 02832722-09999999
27	32-32840A1		1	HOSE, BLEED - CYLINDER BLOCK SERIAL 02832722-09999999
28	54-20387		2	CLAMP, BLEED HOSE ATTACHING SERIAL 02832722-09999999
29	22-58199		1	FITTING, BLEED HOSE SERIAL 02832722-09999999
30	52580		1	COVER, TRANSFER PORT
31	27-27936		1	GASKET, TRANSFER PORT COVER

CONTINUED ON NEXT PAGE ➡

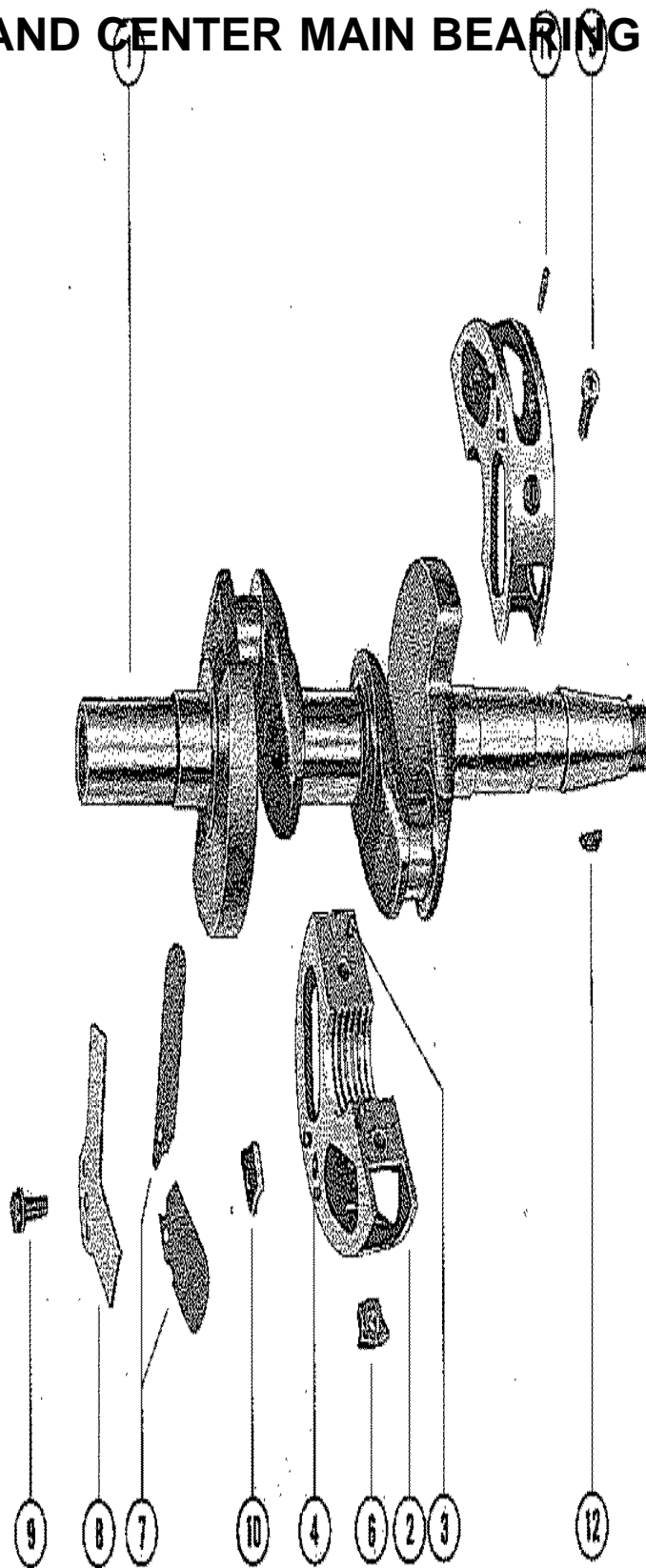
CYLINDER BLOCK AND CRANKCASE ASSEMBLY



CYLINDER BLOCK AND CRANKCASE ASSEMBLY

REF. NO.	PART NO.	SYM.	QTY.	DESCRIPTION
32	10-28636		1	SCREW, TRANSFER PORT COVER TO CYLINDER BLOCK (3/4")
	10-24646		2	SCREW, TRANSFER PORT COVER TO CYLINDER BLOCK (5/8")
33	1022-3567		1	COVER, CYLINDER BLOCK
34	27-52579		1	GASKET, CYLINDER BLOCK COVER
35	10-24644		2	SCREW, COVER TO CYLINDER BLOCK (1 3/8")
36	10-21091		4	SCREW, COVER TO CYLINDER BLOCK (1 1/8")
37	11-46887		6	NUT, CYLINDER BLOCK COVER SCREW
38	27-45088		1	GASKET, CYLINDER BLOCK TO BAFFLE PLATE
39	39308		1	PLATE, BAFFLE - EXHAUST MANIFOLD
40	27-39316		1	GASKET, BAFFLE PLATE TO MANIFOLD COVER
41	57576		1	COVER, EXHAUST MANIFOLD
42	10-28782		7	SCREW, MANIFOLD COVER TO CYLINDER BLOCK (7/8")
43	45915		1	TERMINAL BLOCK, EXHAUST MANIFOLD COVER SERIAL # THRU SERIAL 02827677-02893435
44	10-31206		1	SCREW, TERMINAL BLOCK TO EXHAUST MANIFOLD COVER (7/16") SERIAL 02827677-02893435
45	10-38792		1	SCREW, WIRE TO TERMINAL GLOCK (5/16")
46	30-54215		1	BEARING, BALL - CRANKCASE(LOWER)
47	26-56394		1	OIL SEAL, CRANKCASE (LOWER)

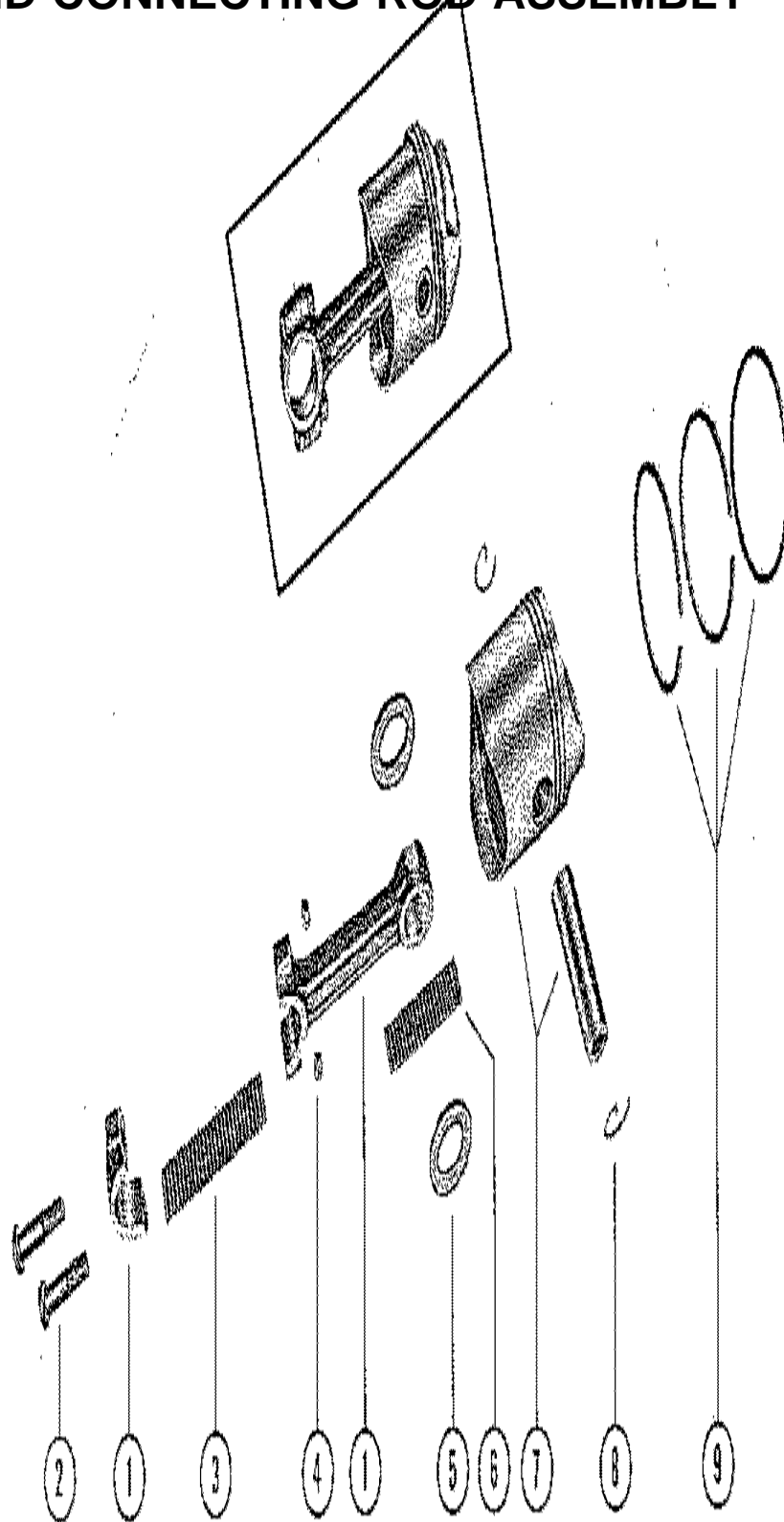
CRANKSHAFT AND CENTER MAIN BEARING ASSEMBLY



CRANKSHAFT AND CENTER MAIN BEARING ASSEMBLY

REF. NO.	PART NO.	SYM.	QTY.	DESCRIPTION
1	415-4072		1	CRANKSHAFT
2	534-3267A8		1	CENTER MAIN BEARING ASSEMBLY
3	17-20032		2	DOWEL PIN, CENTER MAIN BEARING
4	17-55453		8	PIN, REED STOP
5	10-45775		2	SCREW, CENTER MAIN BEARING CLAMPING
6	11-45774		2	NUT, CENTER MAIN BEARING CLAMPING SCREW
7	34-56704A1		1	REED SET, CENTER MAIN BEARING (MATCHED)
8	34-32038		4	REED STOP, MAIN BEARING REED VALVES
9	10-53481		4	SCREW, REED STOP MOUNTING
10	11-20110		4	NUT, REED STOP MOUNTING SCREW
11	17-20032		1	DOWEL PIN, MAIN BEARING TO CYLINDER BLOCK
12	28-20094		1	KEY, FLYWHEEL

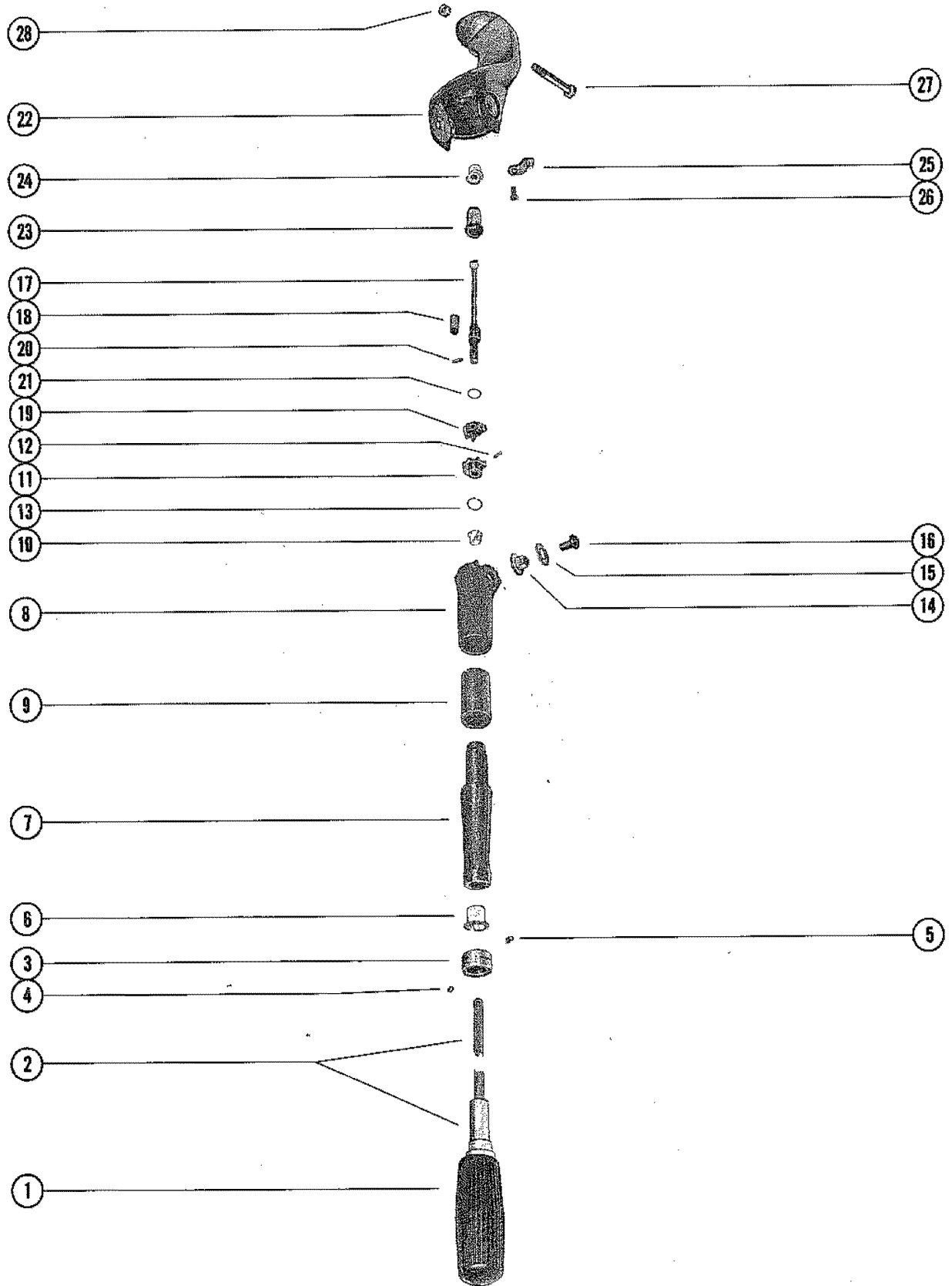
PISTON AND CONNECTING ROD ASSEMBLY



PISTON AND CONNECTING ROD ASSEMBLY

REF. NO.	PART NO.	SYM.	QTY.	DESCRIPTION
1	619-3195A2		2	CONNECTING ROD ASSEMBLY
2	10-45379		4	SCREW, CONNECTING ROD
3	29-20046		50	BEARING, NEEDLE - CRANKPIN
4	11-20061		4	NUT, CONNECTING ROD SCREW
5	12-47275		4	WASHER, NEEDLE BEARING RETAINING
6	29-20063		54	BEARING, NEEDLE - PISTON PIN
7	743-3193A2		2	PISTON AND PISTON PIN ASSEMBLY
8	40-47276		4	LOCK RING, PISTON PIN
9	39-27841A12		1	RING, PISTON
	743-3366A2		2	PISTON AND PISTON PIN ASSEMBLY (.015 OVERSIZE)
	39-28616A12		1	RING, PISTON (.015 OVERSIZE)

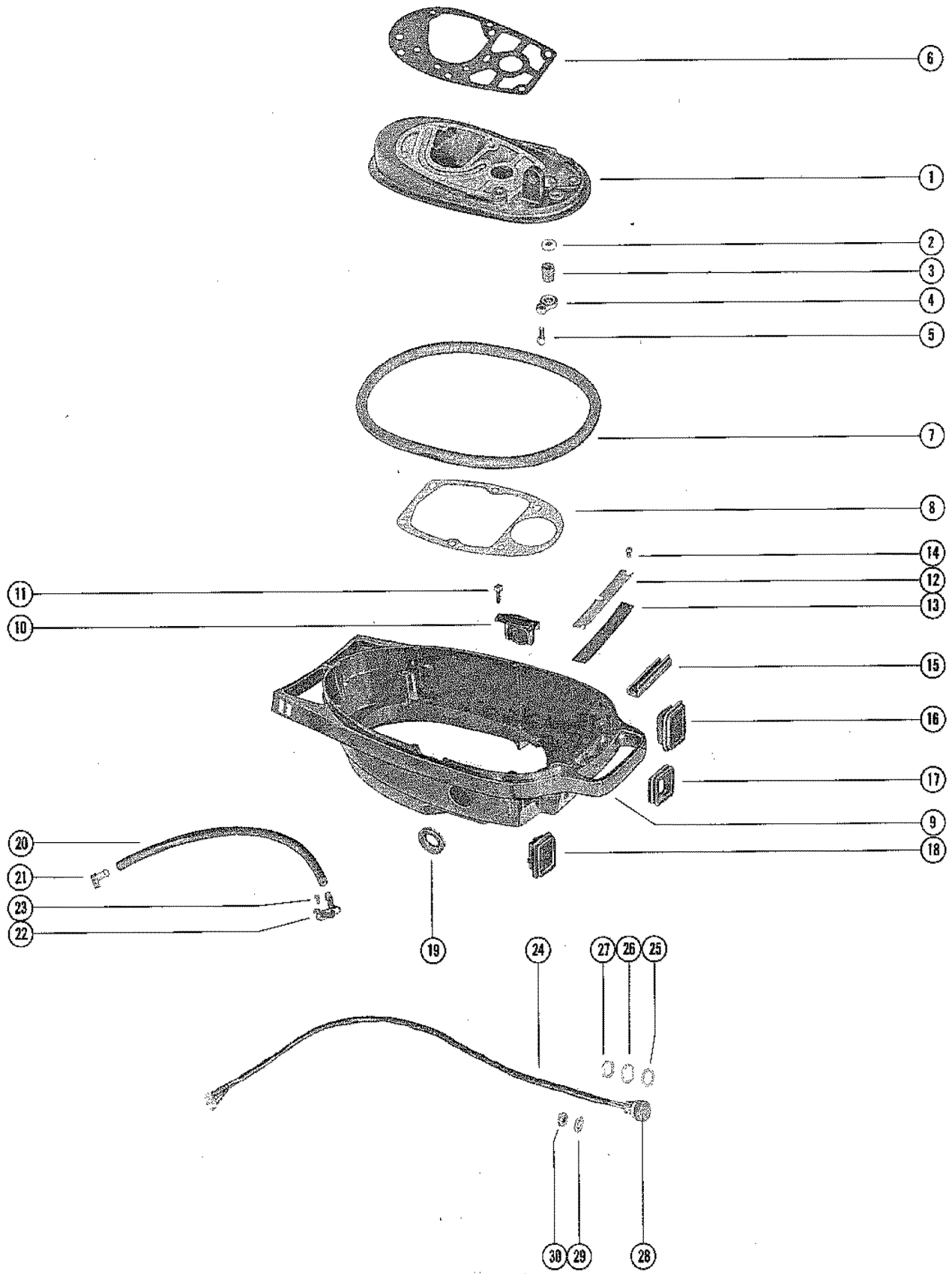
STEERING HANDLE ASSEMBLY



STEERING HANDLE ASSEMBLY

REF. NO.	PART NO.	SYM.	QTY.	DESCRIPTION
-	49557A5		1	STEERING HANDLE ASSEMBLY, COMPLETE
1	27763		1	GRIP, RUBBER - STEERING HANDLE
2	39352		1	BODY AND SHAFT, STEERING HANDLE
3	31001		1	INDICATOR, SPEED AND LIMIT - STEERING HANDLE
4	10-31002		1	SCREW, SET - SPEED AND SHIFT INDICATOR
5	10-22290		1	SCREW, DRIVE - INDICATOR TO STEERING HANDLE BODY
6	23-30677		1	BUSHING NYLON - STEERING HANDLE TO BODY
7	49557		1	ARM, STEERING
8	49558		1	KNUCKLE, STEERING ARM
9	23-49555		1	BUSHING, RUBBER - STEERING HANDLE
10	23-28100		1	BUSHING, NYLON - STERRING HANDLE
11	43-53205		1	GEAR, BALL - STEERING HANDLE SHAFT
12	17-26862		1	PIN, BALL GEAR TO STEERING HANDLE SHAFT
13	53-53204		1	RING, RETAINING - BALL GEAR
14	48003		2	PIVOT, STEERING HANDLE TO BRACKET
15	15-48002015		AR	SHIM, STEERING HANDLE PIVOT TO BRACKET (.015)
16	10-56214		2	SCREW, STEERING HANDLE TO ARM BRACKET (5/8")
17	47825A1		1	UNIVERSAL JOINT ASSEMBLY
18	23-48005		1	SLEEVE, UNIVERSAL JOINT
19	43-53205		1	GEAR, BALL - UNIVERSAL JOINT
20	17-26862		1	PIN, BALL GEAR TO UNIVERSAL JOINT
21	53-53204		1	RING, RETINING - BALL GEAR
22	47671		1	BRACKET, STEERING ARM
23	47743		1	BOOT, UNIVERSAL JOINT
24	23-47818		1	BUSHING, STEERING ARM BRACKET
25	24-47744		2	SPRING, DETENT - STEERING HANDLE
26	10-37571		2	SCREW, DETENT SPRING TO STEERING HANDLE (1/2")
27	10-26132		3	SCREW, STEERING ARM BRACKET TO SADDLE (2 1/2")
28	11-46793		3	NUT, STEERING ARM BRACKET FASTENING SCREW

BOTTOM COWL ASSEMBLY

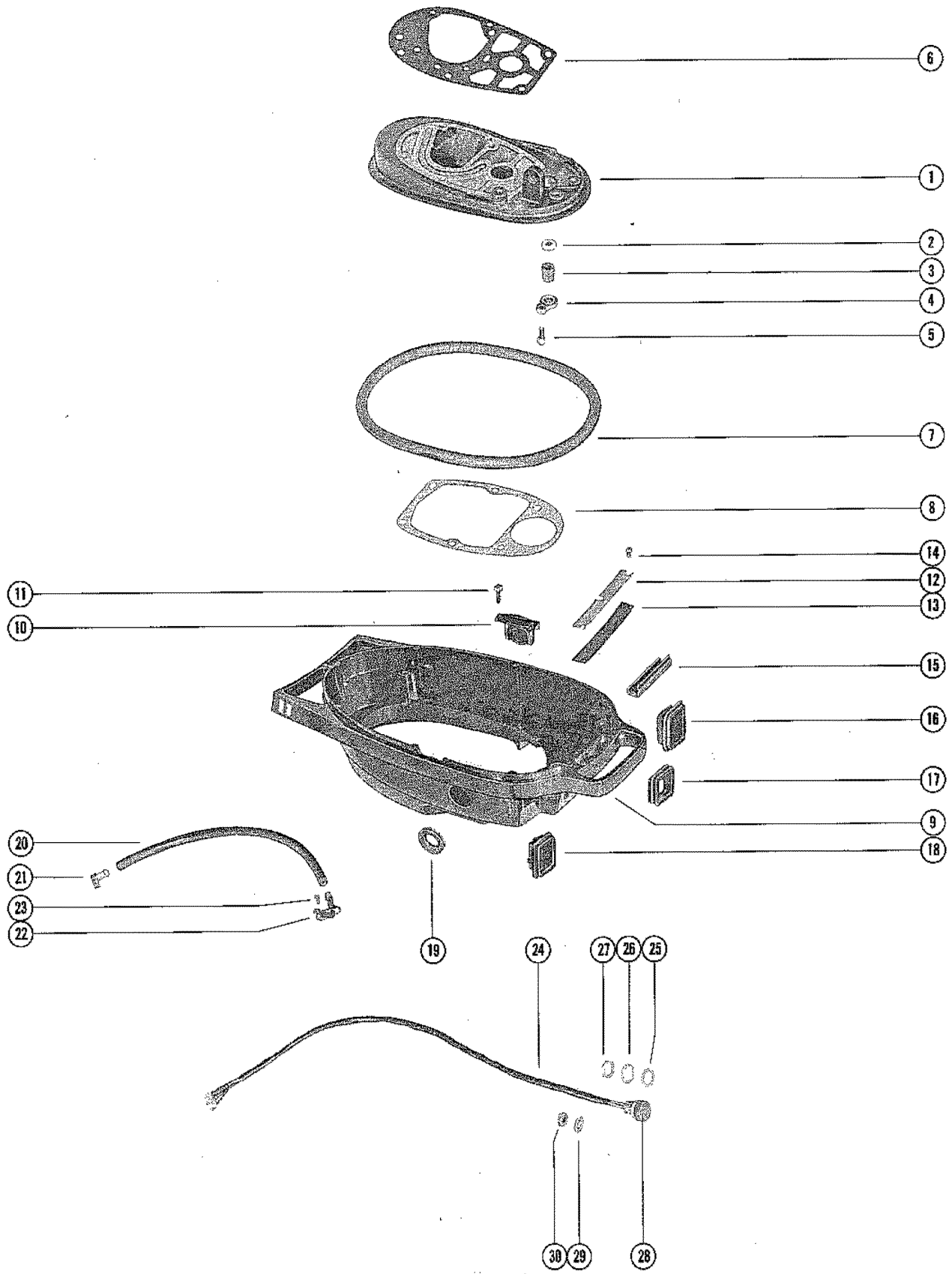


BOTTOM COWL ASSEMBLY

REF. NO.	PART NO.	SYM.	QTY.	DESCRIPTION
1	39299A2		1	PLATE ASSEMBLY, MOUNTING SERIAL 02827677-02893435
	58978A2		1	PLATE ASSEMBLY, MOUNTING SERIAL 02991679-09999999
2	12-36555		1	WASHER, NYLON - WATER INLET TUBE
3	26-25329		1	SEAL , RUBBER - WATER INLET TUBE
4	33513		1	RETAINER, WATER INLET TUBE SEAL
5	10-20540		1	SCREW, RETAINER TO MOUNTING PLATE (5/8")
6	27-39401		1	GASKET, POWERHEAD TO MOUNTING PLATE
7	39622		1	SEAL, MOUNTING PLATE TO BOTTOM COWL
8	27-39402		1	GASKET, MOUNTING PLATE TO DRIVE SHAFT HOUSING
9	2129-3956A2		1	BOTTOM COWL ASSEMBLY SERIAL 02827677-02893435
	2129-4405A2		1	BOTTOM COWL ASSEMBLY SERIAL 02991679-09999999
10	48472		1	COVER, HARNESS HOLE
11	10-20189		2	SCREW, COVER TO BOTTOM COWL (3/4")
12	46266A2		1	COVER PLATE ASSEMBLY, BOTTOM COWL
13	39591		1	PAD, SOUND - COVER PLATE
14	10-30663		3	SCREW, COVER PLATE TO BOTTOM COWL(3/8")
15	39630		1	CUSHION , RUBBER - BOTTOM COWL
16	39777		1	BOOT, THROTTLE CABLE - BOTTOM COWL
17	39778		1	BOOT, FUEL ADAPTOR - BOTTOM COWL
18	39780		1	BOOT, SHIFT CABLE - BOTTOM COWL
19	39058		1	SEAL, SHIFT HANDLE - BOTTOM COWL
20	32-34395A1		1	HOSE, TELL TALE - COWL TO CYLINDER BLOCK (11"
21	22-25885		1	ELBOW, TELL TALE HOSE TO CYLINDER BLOCK
22	52889		1	NOZZLE, TELL TALE HOSE TO BOTTOM COWL PART OF BOTTOM COWL ASSEMBLY
23	10-34222		1	SCREW, TELL TALE NOZZLE TO BOTTOM COWL (1/2") PART OF BOTTOM COWL ASSEMBLY
24	57186A4		1	STOP SWITCH ASSEMBLY SERIAL 02827677-02893435
25	12-38949		1	WASHER, SEALING - STOP SWITCH SERIAL 02827677- 02893435
26	13-21972		1	LOCKWASHER, STOP SWITCH CONNECTOR SERIAL 02827677-02893435
27	11-21971		1	NUT, STOP SWITCH TO BOTTOM COWL SERIAL 02827677- 02893435
24	59065A1		1	STOP SWITCH ASSEMBLY SERIAL 02991679-09999999
25	12-59061		1	WASHER, STATOR LEAD TO STOP SWICH SERIAL 02991679- 09999999

CONTINUED ON NEXT PAGE ➡

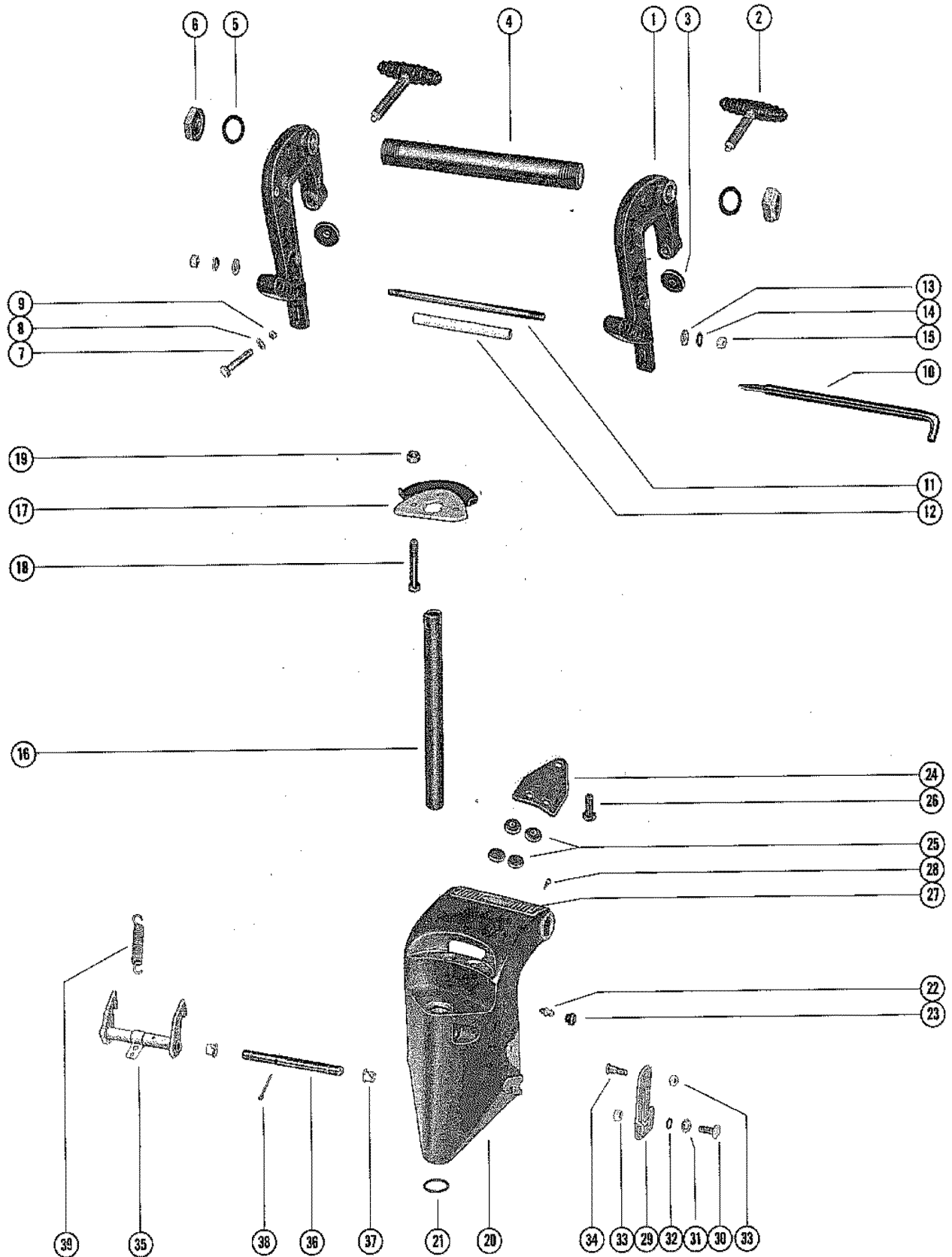
BOTTOM COWL ASSEMBLY



BOTTOM COWL ASSEMBLY

REF. NO.	PART NO.	SYM.	QTY.	DESCRIPTION
26	13-21972		1	LOCKWASHER, STOP SWITCH CONNECTOR SERIAL 02991679-09999999
27	11-21971		1	NUT, STOP SWITCH TO BOTTOM COWL SERIAL 02991679-09999999
28	38950A1		1	COVER ASSEMBLY, STOP SWITCH SERIAL 02991679-09999999
29	13-26996		1	LOCKWASHER, STATOR LEAD NUT SERIAL 02991679-09999999
30	11-20645		1	NUT, STATOR LEAD TO STOP SWITCH SERIAL 02991679-09999999

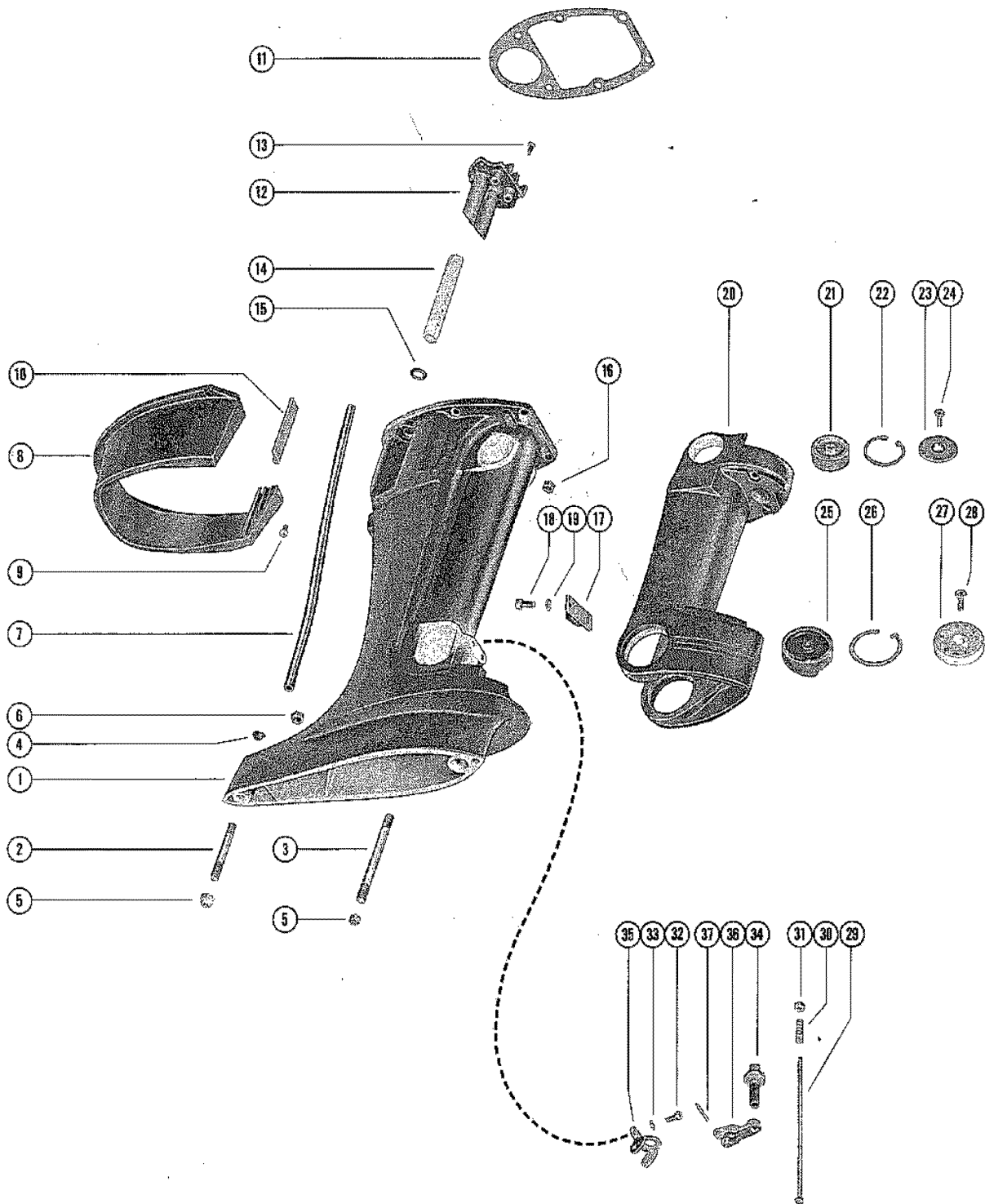
CLAMP AND SWIVEL BRACKET ASSEMBLY



CLAMP AND SWIVEL BRACKET ASSEMBLY

REF. NO.	PART NO.	SYM.	QTY.	DESCRIPTION
1	1427-3293A1		2	CLAMP BRACKET ASSEMBLY
2	22477A4		2	THUMB SCREW ASSEMBLY
3	12-20214		2	WASHER, THUMB SCREW
4	30685		1	TILT TUBE, CLAMP BRACKET TO SWIVEL BRACKET
5	12-52864		2	SHIM, CLAMP BRACKET TILT TUBE
6	11-30499		2	NUT, TILT TUBE FASTENING
7	10-26483		2	BOLT, CLAMP BRACKET TO TRANSOM
8	12-26485		2	WASHER, CLAMP BRACKET SCREW
9	11-26484		2	NUT, CLAMP BRACKET SCREW
10	17-56373A1		1	TILT LOCK PIN ASSEMBLY
11	16-20657		1	STUD, CLAMP BRACKET SERIAL 02827677-02893435
12	23-20658		1	SPACER, CLAMP BRACKET STUD SERIAL 02827677-02893435
13	12-24812		1	WASHER, CLAMP BRACKET STUD SERIAL 02827677-02893435
11	16-59620		1	STUD, CLAMP BRACKET (8") SERIAL 02991679-09999999
12	23-59621		1	SPACER, CLAMP BRACKET STUD SERIAL 02991679-09999999
14	13-26993		2	LOCKWASHER, CLAMP BRACKET STUD
15	11-28770		2	NUT, CLAMP BRACKET STUD
16	17-39585		1	SWIVEL PIN SERIAL 02827677-02893435
	17-59798		1	SWIVEL PIN SERIAL 02991679-09999999
17	33423		1	CO-PILOT DISC
18	10-26132		3	SCREW, CO-PILOT DISC TO SADDLE
19	11-46793		3	NUT, CO-PILOT DISC TO SADDLE SCREW
20	1461-2683A2		1	SWIVEL BRACKET ASSEMBLY
21	25-29845		2	"O" RING, SWIVEL BRACKET
22	22-31345		1	FITTING, GREASE - SWIVEL BRACKET
23	29359		1	LUBRICAP, SWIVEL BRACKET GREASE FITTING
24	39307		1	PLATE, CLAMP - CO-PILOT
25	20203		4	DISC, FRICTION - CLAMP PLATE AND SWIVEL BRACKET
26	10-56784		1	SCREW, CLAMP PLATE TO SWIVEL BRACKET
27	38-56745		1	SERIAL PLATE
28	10-25612		4	SCREW, DRIVE - SERIAL PLATE TO SWIVEL BRACKET
29	55851		1	LEVER, TILT STOP
30	10-29237		1	SCREW, RETAINING - LEVER TO SWIVEL BRACKET
31	13-36076		1	WASHER, WAVE - TILT STOP LEVER SCREW
32	15-37711020		1	SHIM , RETAINING SCREW
33	11-46887		2	NUT, TILT STOP LEVER SCREW
34	10-27791		1	SCREW, ANCHOR - TILT STOP LEVER
35	33417A1		1	REVERSE LOCK LEVER ASSEMBLY
36	26092		1	ROD, ERVERSE LOCK LEVER
37	23-26841		2	BUSHING, NYLON - REVERSE LOCK LEVER ROD
38	18-45882		1	COTTER PIN, REVERSE LOCK LEVER TO ROD
39	24-33418		1	SPRING, REVERSE LOCK LEVER

DRIVE SHAFT HOUSING ASSEMBLY

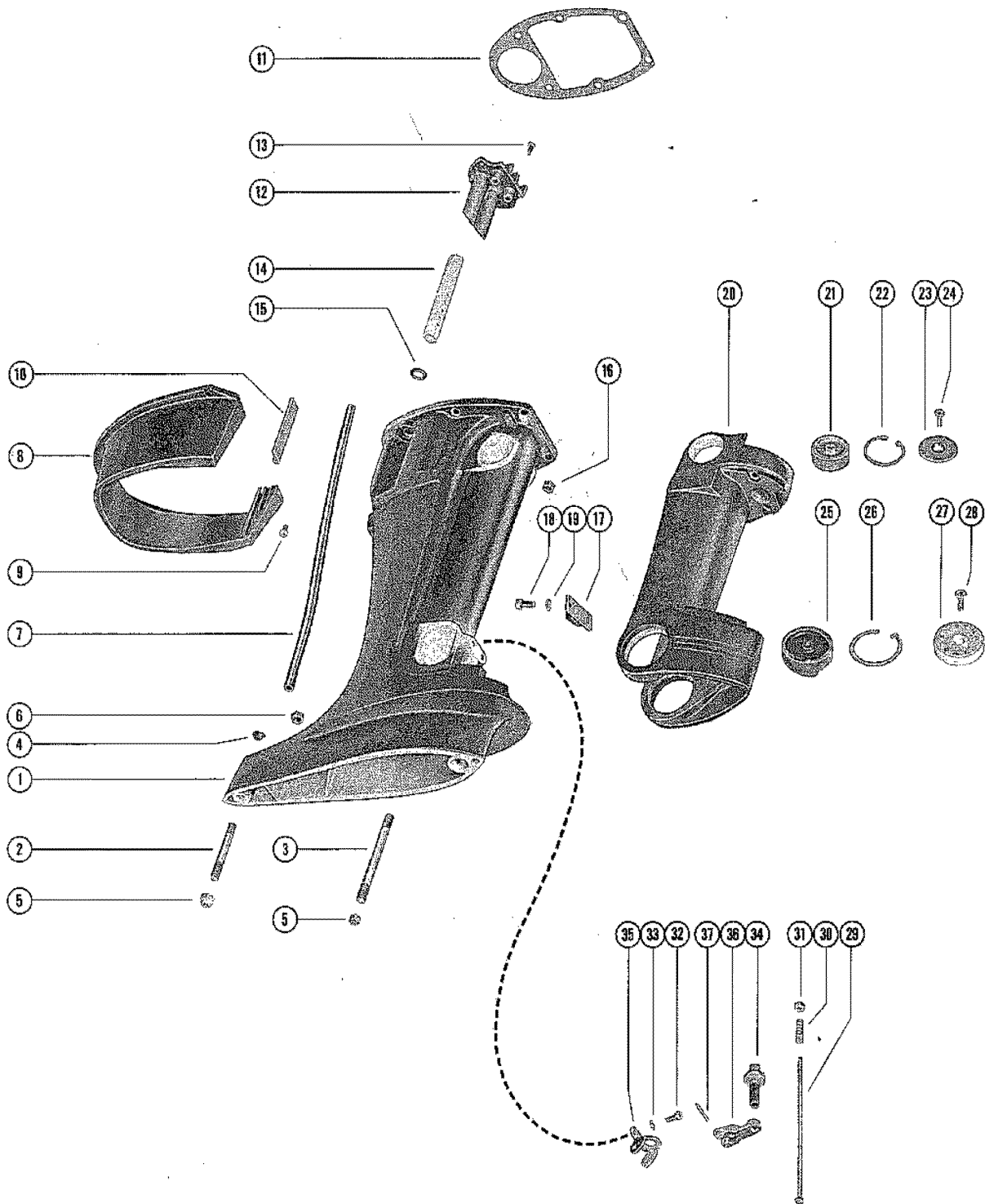


DRIVE SHAFT HOUSING ASSEMBLY

REF. NO.	PART NO.	SYM.	QTY.	DESCRIPTION
1	1561-2672A4		1	DRIVE SHAFT HOUSING ASSEMBLY(SHORT SHAFT)
	1560-2671A2		1	DRIVE SHAFT HOUSING ASSEMBLY(LONG SHAFT)
2	16-56299		1	STUD, DRIVE SHAFT HSG. TO GEAR HSG. (2 5/16")
3	16-58134		1	STUD, DRIVE SHAFT HSG. TO GEAR HSG. (3 15/16")
4	19-32298		1	PLUG, DRIVE SHAFT HOUSING STUD
5	11-35814		2	NUT, DRIVE SHAFT HOUSING STUD
6	11-34863		1	NUT, GEAR HOUSING TO DRIVE SHAFT HOUSING STUD
7	32-39586		1	TUBE, WATER OUTLET (SHORT SHAFT)
	32-39587		1	TUBE, WATER OUTLET(LONG SHAFT)
8	39301		1	COVER, TRIM - DRIVE SHAFT HOUSING
9	10-35012		3	SCREW, TRIM COVER TO BOTTOM COWL (5/8")
10	39353		2	SEAL, RUBBER - TRIM COVER
11	27-39402		1	GASKET, MOUNTING PLATE TO DRIVE SHAFT HOUSING
12	39492		1	PLATE, IDLE RELIEF
13	10-35519		2	SCREW, IDLE RELIEF PLATE TO DRIVE SHAFT HOUSING
14	32-45054		2	TUBE, NYLON - IDLE RELIEF PLATE
15	25-20195		2	"O" RING, IDLE RELIEF TUBE
16	11-46793		4	NUT, POWERHEADS STUDS
	11-29250		2	NUT, POWERHEADS STUDS
17	33420		1	BUMPER, RUBBER - SADDLE
18	10-31716		2	SCREW, RUBBER BUMPER TO SADDLE (5/8")
19	13-26992		2	LOCKWASHER, RUBBER BUMPER SCREW
20	1562-2673		1	SADDLE
21	33975		2	MOUNT, RUBBER - UPPER(SHORT SHAFT)
	25150		2	MOUNT, RUBBER - UPPER(LONG SHAFT)
22	53-23720		2	RING, RETAINING - UPPER MOUNT
23	39481		2	COVER, UPPER MOUNT
24	10-39669		2	SCREW, UPPER MOUNT COVER FASTENING (3/4")
25	33976		2	MOUNT, RUBBER - LOWER(SHORT SHAFT)
	28281		2	MOUNT, RUBBER - LOWER(LONG SHAFT)
26	53-23721		2	RING, RETAINING - LOWER MOUNT
27	53040		2	COVER, LOWER MOUNT
28	10-28638		2	SCREW, LOWER MOUNT COVER FASTENING
29	33495		1	LINK ROD, REVERSE LOCK
30	24-33413		1	SPRING, TENSION - REVERSE LOCK LINK ROD
31	11-57146		1	NUT, REVERSE LOCK LINK ROD
32	10-31716		1	SCREW, CAM RETAINER TO DRIVE SHAFT HOUSING
33	13-26992		1	LOCKWASHER, CAM RETAINER SCREW
34	39241A1		2	CAM COUPLING ASSEMBLY, SHIFT SHAFT SERIAL 02827677-02893435
35	35653		2	RETAINER, REVERSE LOCK CAM SERIAL 02827677-02893435
36	33407		1	LEVER, REVERSE LOCK CAM SERIAL 02827677-02893435

CONTINUED ON NEXT PAGE ➡

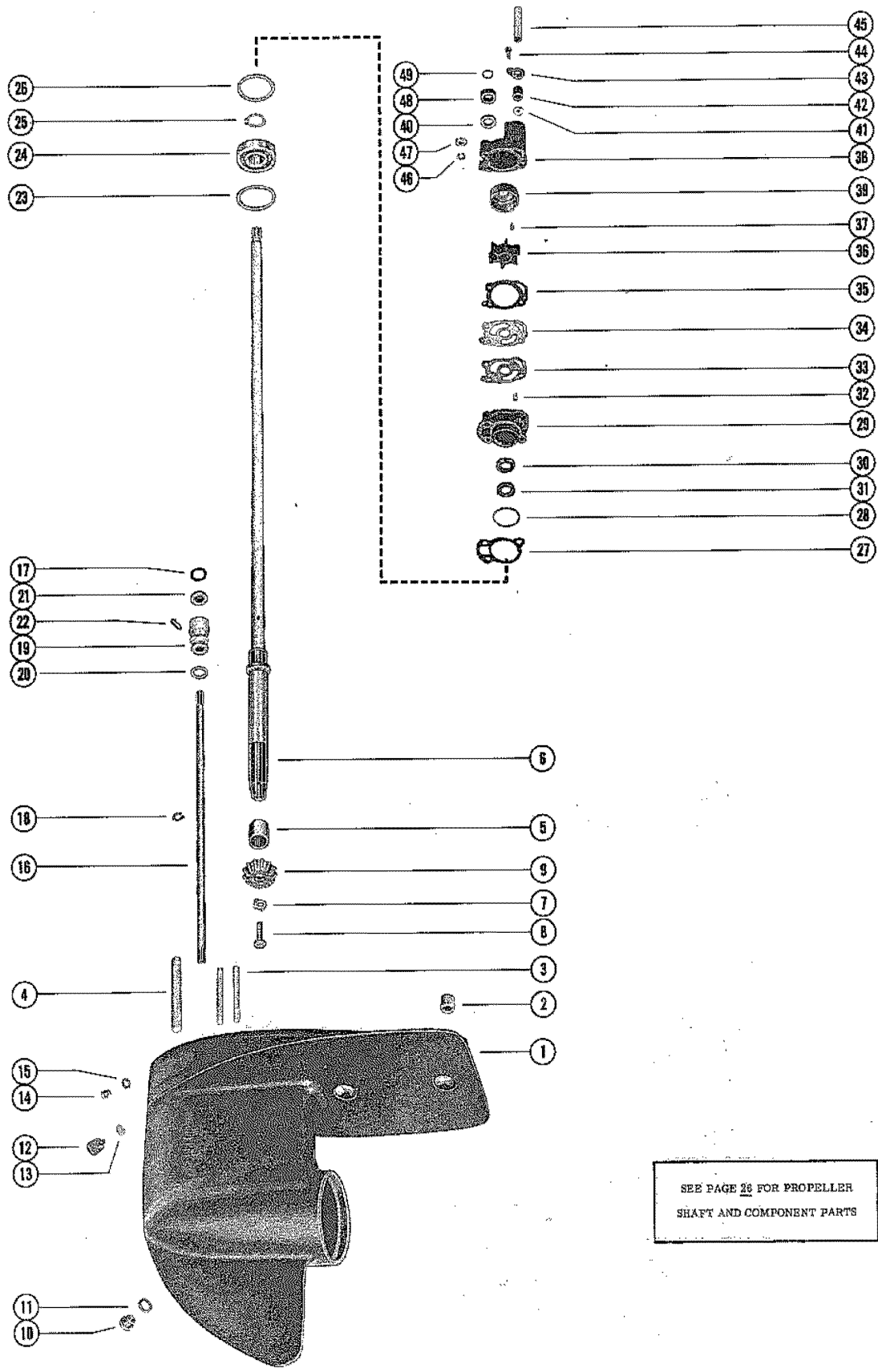
DRIVE SHAFT HOUSING ASSEMBLY



DRIVE SHAFT HOUSING ASSEMBLY

REF. NO.	PART NO.	SYM.	QTY.	DESCRIPTION
37	17-33522		1	PIN, ROLL - CAM LEVER TO RETAINER SERIAL 02827677-02893435
34	58974		1	CAM, COUPLING - SHIFT SHAFT SERIAL 02991679-09999999
35	35653		1	RETIANER, REVERSE LOCK CAM SERIAL 02991679-09999999
36	58973		1	LEVER, REVERSE LOCK CAM SERIAL 02991679-09999999
37	17-58998		1	PIN, ROLL - CAM LEVER TO RETAINER SERIAL 02991679-09999999

GEAR HOUSING ASSEMBLY, COMPLETE (PAGE 1)



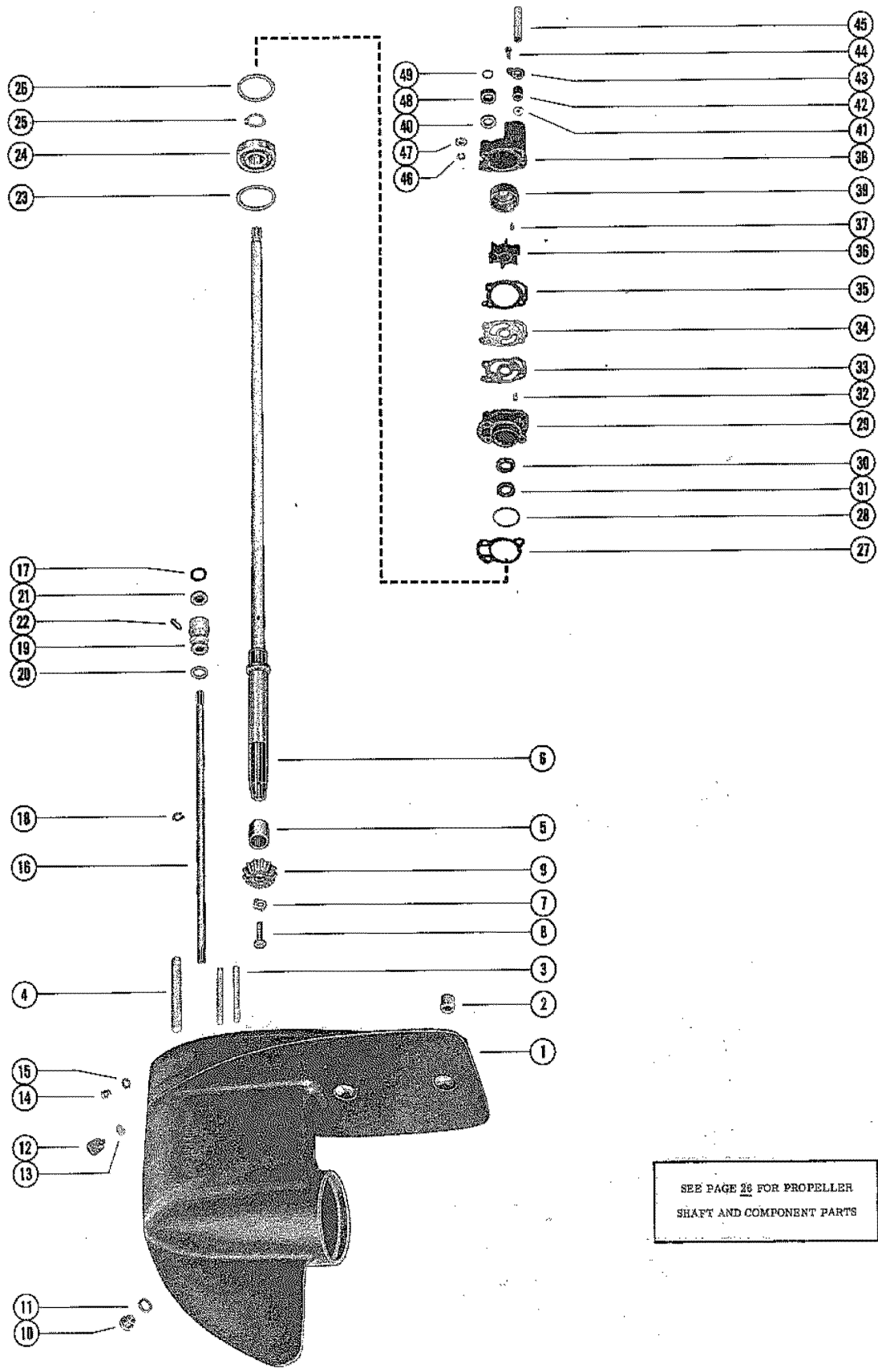
SEE PAGE 28 FOR PROPELLER
SHAFT AND COMPONENT PARTS

GEAR HOUSING ASSEMBLY, COMPLETE (PAGE 1)

REF. NO.	PART NO.	SYM.	QTY.	DESCRIPTION
-	1627-3482A13		1	GEAR HOUSING ASSEMBLY, COMPLETE(SHORT SHAFT) SERIAL #2827677
-	1627-3482A14		1	GEAR HOUSING ASSEMBLY, COMPLETE(LONG SHAFT)
-	1627-4404A4		1	GEAR HOUSING ASSEMBLY, COMPLETE(SHORT SHAFT) SERIAL #2991679
-	1627-4404A5		1	GEAR HOUSING ASSEMBLY, COMPLETE(LONG SHAFT)
1	1627-3482A1		1	GEAR HOUSING ASSEMBLY(SERIAL #2827677 THRU #2893435)
	1627-4404A6		1	GEAR HOUSING ASSEMBLY(SERIAL #2991679 AND UP)
2	17-20201		1	PIN, DOWEL - GEAR HOUSING TO DRIVE SHAFT HOUSING
3	16-58137		3	STUD, WATER PUMP TO GEAR HOUSING (3 1/8")
4	16-58135		1	STUD, GEAR HOUSING TO DRIVE SHAFT HOUSING (4 13/16")
5	31-28157		1	BEARING, ROLLER - DRIVE SHAFT
6	45-56792A1		1	DRIVE SHAFT ASSEMBLY(SHORT SHAFT)
	45-56793A1		1	DRIVE SHAFT ASSEMBLY(LONG SHAFT)
7	14-49911		1	TAB WASHER, PINION GEAR SCREW
8	10-49908		1	SCREW, PINION GEAR TO DRIVE SHAFT
9	43-45189		1	GEAR, PINION
10	10-28634		1	SCREW, GREASE FILLER
11	12-20260		1	WASHER, GREASE FILLER SCREW
12	19-48750		1	PLUG, GEAR HOUSING FLUSHING
13	12-49221		1	WASHER, NEOPRENE - GEAR HOUSING FLUSHING PLUG
14	10-28653		1	SCREW, GREASE VENT
15	12-20262		1	WASHER, GREASE VENT SCREW
16	56829A1		1	SHAFT ASSEMBLY, SHIFT - LOWER(SHORT SHAFT)
	56830A1		1	SHAFT ASSEMBLY, SHIFT - LOWER (LONG SHAFT)
17	25-38933		1	"O" RING, LOWER SHIFT SHAFT
18	53-22899		1	RING, RETAINING - SHIFT SHAFT
19	23-30676A1		1	BUSHING ASSEMBLY, SHIFT SHAFT
20	25-26802		1	"O" RING, SHIFT SHAFT BUSHING
21	26-30696		1	OIL SEAL, SHIFT SHAFT BUSHING
22	10-39149		1	SCREW, SHIFT SHAFT BUSHING RETAINER
23	15-20804A1		AR	SHIM, BALL BEARING TO GEAR HOUSING (.002-3-5-10)
24	30-47158		1	BEARING, BALL - DRIVE SHAFT
25	53-33463		1	RING, RETAINING - BALL BEARING
26	15-20804A1		AR	SHIM, GEAR HOUSING TO WATER PUMP BASE(.002-3-5-10)
27	27-39626		1	GASKET, WATER PUMP BASE TO GEAR HOUSING
28	25-33466		1	"O" RING, WATER PUMP BASE
29	46-48744A1		1	WATER PUMP BASE ASSEMBLY
30	26-20070		1	OIL SEAL, WATER PUMP BASE
31	26-33467		1	OIL SEAL, WATER PUMP BASE (SPRING LOADED)
32	17-35973		2	PIN, DOWEL _ WATER PUMP BASE TO WATER PUMP BODY

CONTINUED ON NEXT PAGE ➡

GEAR HOUSING ASSEMBLY, COMPLETE (PAGE 1)

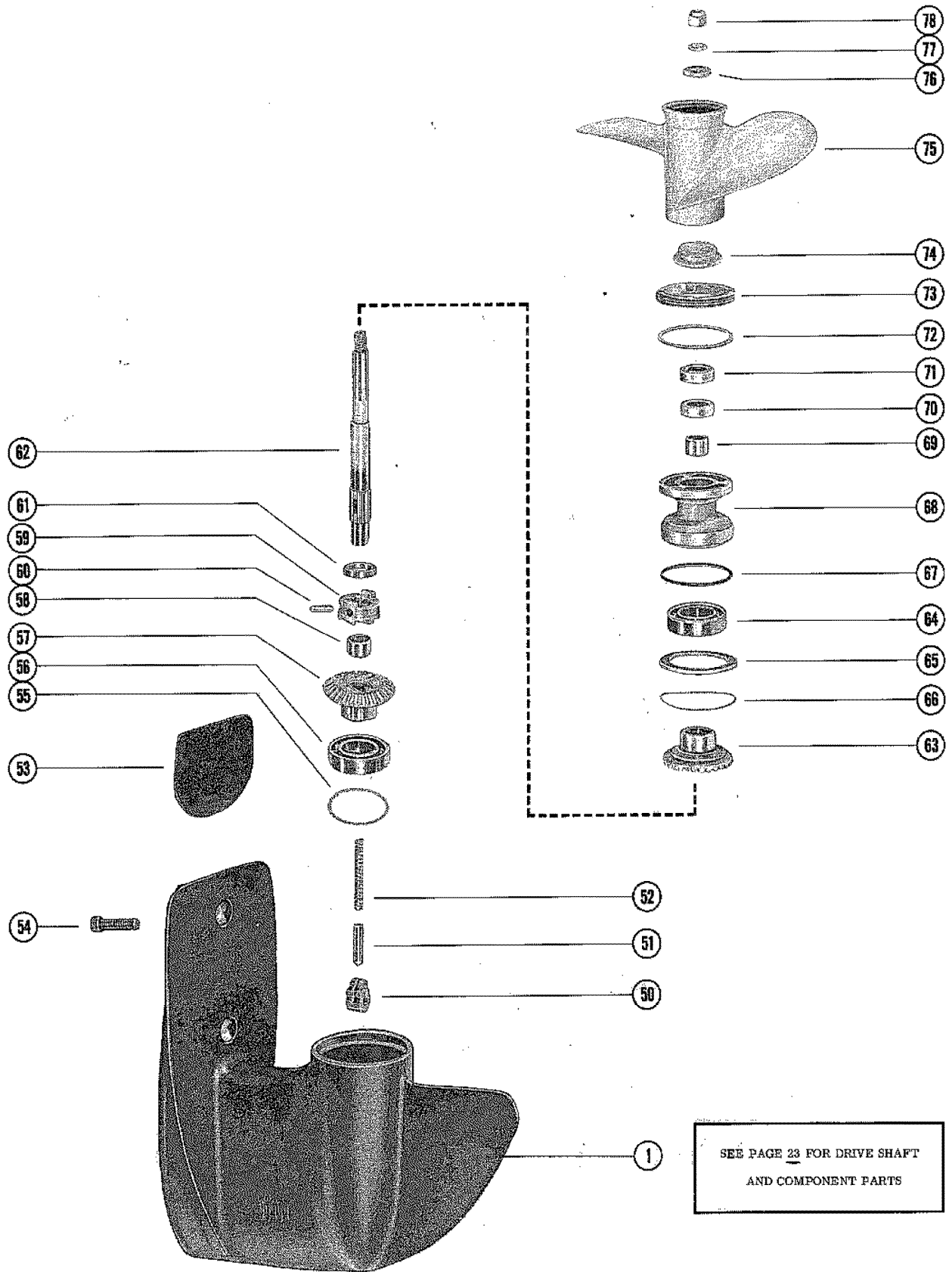


SEE PAGE 28 FOR PROPELLER
SHAFT AND COMPONENT PARTS

GEAR HOUSING ASSEMBLY, COMPLETE (PAGE 1)

REF. NO.	PART NO.	SYM.	QTY.	DESCRIPTION
33	27-39625		1	GASKET, WATER PUMP BASE TO FACE PLATE (LOWER)
34	39624		1	PLATE, FACE - WATER PUMP BASE TO WATER PUMP BODY
35	27-39623		1	GASKET, FACT PLATE TO WATER PUMP BODY (UPPER)
36	47-56780		1	IMPELLER, WATER PUMP PART OF DRIVE SHAFT ASSEMBLY
37	28-56661		1	KEY, IMPELLER DRIVE
38	46-48749A2		1	WATER PUMP BODY ASSEMBLY
39	48754		1	INSERT, WATER PUMP BODY
40	26-20070		1	OIL SEAL, WATER PUMP BODY
41	12-36555		1	WASHER, NYLON - WATER PUMP BODY
42	26-25329		1	SEAL, WATER PUMP BODY
43	45010		1	RETAINER, WATER PUMP BODY SEAL
44	10-56396		1	SCREW, SEAL RETAINER TO WATER PUMP BODY (1 1/8")
45	23-45170		1	SLEEVE, GUIDE - WATER INLET TUBE
46	12-36001		3	WASHER, WATER PUMP STUDS
47	11-45592		3	NUT, WATER PUMP STUDS
48	12-20684		1	RING, RUBBER - CENTRIFUGAL SLINGER (DRIVE SHAFT)
49	25-26802		1	"O" RING, UPPER - DRIVE SHAFT
-	1627-3482A13		1	GEAR HOUSING ASSEMBLY, COMPLETE (SHORT SHAFT) SERIAL #282767
-	1627-3482A14		1	GEAR HOUSING ASSEMBLY, COMPLETE(LONG SHAFT)
-	1627-4404A4		1	GEAR HOUSING ASSEMBLY, COMPLETE(SHORT SHAFT) SERIAL #2991679
-	1627-4404A5		1	GEAR HOUSING ASSEMBLY, COMPLETE(LONG SHAFT)

GEAR HOUSING ASSEMBLY, COMPLETE (PAGE 2)



GEAR HOUSING ASSEMBLY, COMPLETE (PAGE 2)

REF. NO.	PART NO.	SYM.	QTY.	DESCRIPTION
1	1627-3482A1		1	GEAR HOUSING ASSEMBLY(SERIAL #2827677 THRU #2893435) SEE PA
	1627-4404A6		1	GEAR HOUSING ASSEMBLY(SERIAL #2991679 AND UP)
50	33436		1	CAM, SHIFT(SERIAL #2827677 THRU #2893435)
	58975		1	CAM, SHIFT(SERIAL #2991679 AND UP)
51	33438		1	FOLLOWER, CAM
52	24-33479		1	SPRING, CAM FOLLOWER
53	47820A1		1	PLATE ASSEMBLY, ANODIC - GEAR HOUSING
54	10-47819		1	SCREW, ANODIC PLATE TO GEAR HOUSING(1 1/4")
55	15-20788A1		AR	SHIM, BALL BEARING TO GEAR HOUSING(.002-3-5-10)
56	30-25398		1	BEARING, BALL - FORWARD GEAR
57	43-45227		1	FORWARD GEAR ASSEMBLY
58	31-28157		1	BEARING, ROLLER - FORWARD GEAR
59	52-53518A1		1	RATCHET ASSEMBLY, SLIDING CLUTCH
60	17-53372		1	PIN, CROSS - RATCHET TO PROPELLER SHAFT
61	24-53373		1	SPRING, RETAINING - CROSS PIN
62	44-34238A2		1	PROPELLER SHAFT ASSEMBLY(INCLUDES REF. #74-----A-23-34237
63	43-45229		1	REVERSE GEAR ASSEMBLY
64	30-25398		1	BEARING, BALL - REVERSE GEAR
65	12-33434		1	WASHER, THRUST - REVERSE GEAR
66	15-33431A1		AR	SHIM, THRUST WASHER TO GEAR HOUSING (.002-3-5-10)
67	25-33465		1	"O" RING, BEARING CARRIER
68	33402A1		1	BEARING CARRIER ASSEMBLY
69	31-28157		1	BEARING, ROLLER - BEARING CARRIER
70	26-27163		1	OIL SEAL, BEARING CARRIER (SPRING LOADED)
71	26-26805		1	OIL SEAL, BEARING CARRIER
72	12-33432		1	WASHER, GEAR HOUSING COVER
73	33410		1	COVER, GEAR HOUSING
74	23-34237		1	COLLAR, GUIDE - PROPELLER SHAFT
75	48-33480A1		1	PROPELLER ASSEMBLY(2 BLADE - ALUMINUM - 11" PITCH) SHIPPED W
	48-34402A1		OPT	PROPELLER ASSEMBLY(2 BLADE - BRONZE - 11" PITCH)
	48-33482A1		OPT	PROPELLER ASSEMBLY(3 BLADE - ALUMINUM - 9" PITCH)
	48-37316A1		OPT	PROPELLER ASSEMBLY(3 BLADE - ALUMINUM -7" PITCH)
76	23-27024		1	SPACER, SPLINE - PROPELLER SHAFT
77	12-27025		1	WASHER, PROPELLER NUT(SERIAL #2827677 THRU #2893435)
78	11-46355		1	NUT, PROPELLER RETAINING

PARTS INDEX

Part Number	Description	Pg.	Ref. No.	Part Number	Description	Pg.	Ref. No.
20155	RETAINER, STARTER			35653	RETIANER, REVERSE LOCK		
	SPRING	5	39		CAM	43	35
20162	PAWL, STARTER	5	44	38938	BOOT, CABLE	7	19
20164	PLATE, RETAINER -			38950A1	COVER ASSEMBLY, STOP		
	STARTER PAWL	5	49		SWITCH	37	28
20203	DISC, FRICTION - CLAMP			39058	SEAL, SHIFT HANDLE -		
	PLATE AND SWIVEL				BOTTOM COWL	35	19
	BRACKET	39	25	39241A1	CAM COUPLING ASSEMBLY,		
22477A4	THUMB SCREW ASSEMBLY	39	2		SHIFT SHAFT	41	34
22789	"D" WASHER, CLIP SCREW	7	27	39301	COVER, TRIM - DRIVE		
22833	ADAPTOR, CHECK UNIT ...	17	23		SHAFT HOUSING	41	8
23069	STEM, CHECK UNIT			39307	PLATE, CLAMP - CO-PILOT .	39	24
	ADAPTOR	17	22	39308	PLATE, BAFFLE - EXHAUST		
25150	MOUNT, RUBBER - UPPER(MANIFOLD	27	39
	LONG SHAFT)	41	21	39323	HANDLE, NYLON - SHIFT		
26092	ROD, ERVERSE LOCK				CONTROL	19	1
	LEVER	39	36	39352	BODY AND SHAFT,		
26179	RETAINER, STARTER				STEERING HANDLE	33	2
	SHEAVE TO PLATE	5	46	39353	SEAL, RUBBER - TRIM		
27763	GRIP, RUBBER - STEERING				COVER	41	10
	HANDLE	33	1	39399	BRACKET, MOUNTING -		
28281	MOUNT, RUBBER - LOWER(SHIFT SHAFT	19	4
	LONG SHAFT)	41	25	39400	SHIELD, REAR - TOP COWL	3	7
28748	RETAINER, STARTER			39415	LEVER, SHIFT CONTROL ..	19	14
	CABLE AND HANDLE ...	5	62	39481	COVER, UPPER MOUNT ...	41	23
29359	LUBRICAP, SWIVEL			39482	HOOK, FRONT COVER		
	BRACKET GREASE				LATCH	3	22
	FITTING	39	23	39492	PLATE, IDLE RELIEF	41	12
30188	CUP WASHER, ADAPTOR ..	17	19	39493	CATCH, FRONT COVER -		
30413	HOOK, COWL LATCH				TOP COWL	3	16
	FASTENING	3	12	39505	BASE, FRONT COVER		
30685	TILT TUBE, CLAMP				LATCH	3	19
	BRACKET TO SWIVEL			39588	CAM, DETENT - SHIFT		
	BRACKET	39	4		SHAFT	19	11
30782	HANDLE, STARTER CABLE .	5	61	39591	PAD, SOUND - COVER		
31001	INDICATOR, SPEED AND				PLATE	35	13
	LIMIT - STEERING			39601	PLATE, DETENT SPRING ..	19	8
	HANDLE	33	3	39606	BLANKET, SOUND		
33402A1	BEARING CARRIER				ABSORBING - WRAP		
	ASSEMBLY	49	68		AROUND COWL	3	10
33407	LEVER, REVERSE LOCK			39622	SEAL, MOUNTING PLATE TO		
	CAM	41	36		BOTTOM COWL	35	7
33410	COVER, GEAR HOUSING ..	49	73	39624	PLATE, FACE - WATER		
33417A1	REVERSE LOCK LEVER				PUMP BASE TO WATER		
	ASSEMBLY	39	35	39628	PUMP BODY	47	34
33420	BUMPER, RUBBER -				BUTTON, FRONT COVER		
	SADDLE	41	17		RELEASE - TOP COWL ..	3	13
33423	CO-PILOT DISC	39	17	39630	CUSHION , RUBBER -		
33436	CAM, SHIFT(SERIAL				BOTTOM COWL	35	15
	#2827677 THRU #2893435)	49	50	39632	SHAFT, SHIFT		
33438	FOLLOWER, CAM	49	51		(HORIZONTAL)	19	16
33495	LONK ROD, REVERSE LOCK	41	29	39664	INSERT, ROPE GUIDE - TOP		
33513	RETAINER, WATER INLET				COWL	3	2
	TUBE SEAL	35	4	39777	BOOT, THROTTLE CABLE -		
33973	SWIVEL, THROTTLE LINK ..	7	33		BOTTOM COWL	35	16
33975	MOUNT, RUBBER - UPPER(39778	BOOT, FUEL ADAPTOR -		
	SHORT SHAFT)	41	21		BOTTOM COWL	35	17
33976	MOUNT, RUBBER - LOWER(39780	BOOT, SHIFT CABLE -		
	SHORT SHAFT)	41	25		BOTTOM COWL	35	18

PARTS INDEX

Part Number	Description	Pg.	Ref. No.	Part Number	Description	Pg.	Ref. No.
45010	RETAINER, WATER PUMP			55851	LEVER, TILT STOP	39	29
	BODY SEAL	47	43	55860	PULLEY, STARTER CABLE . . .	3	32
45481	SHAFT, SHEAVE	5	51	56188	COVER, IGNITION COIL . . .	9	41
45915	TERMINAL BLOCK, EXHAUST MANIFOLD			56305	BRACKET, MOUNTING - TOP COWL (REAR)	5	52
	COVER SERIAL # THRU . . .	27	43	56312	LINK, THROTTLE - CONTACT HOUSING	7	28
46266A2	COVER PLATE ASSEMBLY, BOTTOM COWL	35	12	56316A2	CABLE ASSEMBLY, CONTACT HOUSING (WHITE - 17")	7	18
46387	CLUSTER, THROTTLE	11	20	56317A2	CABLE ASSEMBLY, CONTACT HOUSING (BROWN - 17 3/4")	7	18
46405	LINK, THROTTLE CLUSTER	23	25	56318A2	CABLE ASSEMBLY, COIL TO COIL (5 1/4")	9	49
46413	THROTTLE LEVER, VERTICAL SHAFT	23	12	56700	LEVER, STATOR PLATE CONTROL	23	18
46785A1	COWL LATCH ASSEMBLY . . .	3	11	56757A1	JUMPER WIRE ASSEMBLY, STATOR TO THROTTLE LINK	7	36
46836	FOLLOWER, NEUTRAL SPEED LIMITER	19	24	56828A1	SHIFT CONTROL SHAFT ASSEMBLY, VERTICAL . . .	19	20
46837	STOP, OVER-SPEED LIMITER	21	30	56828A2	SHIFT CONTROL SHAFT ASSEMBLY, VERTICAL . . .	19	20
47422	BRACKET, MOUNTING - TOP COWL (FRONT)	5	56	56829A1	SHAFT ASSEMBLY, SHIFT - LOWER (SHORT SHAFT) . . .	45	16
47430	BUMPER, RUBBER - STARTER HOUSING	3	31	56830A1	SHAFT ASSEMBLY, SHIFT - LOWER (LONG SHAFT) . . .	45	16
47604A1	PROTECTOR ASSEMBLY, SPARK PLUG	9	47	57024	LEVER, STATOR PLATE - VERTICAL SHAFT	23	17
47671	BRACKET, STEERING ARM	33	22	57031A2	HOUSING ASSEMBLY, STARTER	3	26
47743	BOOT, UNIVERSAL JOINT . . .	33	23	57186A4	STOP SWITCH ASSEMBLY . . .	35	24
47820A1	PLATE ASSEMBLY, ANODIC - GEAR HOUSING	49	53	57576	COVER, EXHAUST MANIFOLD	27	41
47825A1	UNIVERSAL JOINT ASSEMBLY	33	17	57927	MOUNT, RUBBER - FRONT MOUNTING GBRACKET TO CRANKCASE	5	58
47899A9	LEAD ASSEMBLY, HIGH TENSION	9	45	57927	MOUNT, RUBBER - REAR MOUNTING BRACKET TO CYLINDER BLOCK	5	54
47932	KNOB AND SHAFT, CHOKE	15	1	58657	INSERT, ROPE GUIDE - TOP COWL	3	2
47933	LEVER, CHOKE SHUTTER . . .	15	4	58973	LEVER, REVERSE LOCK CAM	43	36
48003	PIVOT, STEERING HANDLE TO BRACKET	33	14	58974	CAM, COUPLING - SHIFT SHAFT	43	34
48472	COVER, HARNESS HOLE . . .	35	10	58975	CAM, SHIFT (SERIAL #2991679 AND UP)	49	50
48662	HOUSING, THROTTLE CONTROL	23	3	58978A2	PLATE ASSEMBLY, MOUNTING	35	1
48754	INSERT, WATER PUMP BODY	47	39	58979	FOLLOWER, NEUTRAL SPEED LIMITER	19	24
48755A1	FLUSHING ASSEMBLY	1	-	59065A1	STOP SWITCH ASSEMBLY . . .	35	24
49557	ARM, STEERING	33	7	59107	HANDLE, NYLON - SHIFT CONTROL	19	1
49557A5	STEERING HANDLE ASSEMBLY, COMPLETE . . .	33	-	10-20100	SCREW, PLATE AND SPRING TO MOUNTING BRACKET (1/2")	19	9
49558	KNUCKLE, STEERING ARM	33	8				
52580	COVER, TRANSFER PORT . . .	25	30				
52889	NOZZLE, TELL TALE HOSE TO BOTTOM COWL	35	22				
53040	COVER, LOWER MOUNT . . .	41	27				
53111	RETAINER, PULLEY SCREW	3	34				
53238A3	FUEL PUMP ASSEMBLY . . .	17	1				
53241	BASE, FUEL PUMP	17	6				
53245A1	DIAPHRAGM KIT, FUEL PUMP	17	3				
53544	BRACKET, FUEL PUMP TO CRANKCASE	17	11				
53545	COVER, FUEL PUMP	17	7				
53559	SHUTTER, CHOKE - CARBURETOR	15	5				

PARTS INDEX

Part Number	Description	Pg.	Ref. No.	Part Number	Description	Pg.	Ref. No.
10-20540	SCREW, RETAINER TO MOUNTING PLATE (5/8")	35	5	10-26132	SCREW, CO-PILOT DISC TO SADDLE	39	18
10-20653	SCREW, THROTTLE CONTROL HOUSING FASTENING (1")-LOWER	23	5	10-26132	SCREW, CRANKCASE TO CYLINDER BLOCK (2 1/2")	25	20
10-20784	SCREW, CHECK UNIT ADAPTOR TO BOTTOM COWL (1 1/2")	17	24	10-26132	SCREW, STEERING ARM BRACKET TO SADDLE (2 1/2")	33	27
10-20847	SCREW, THROTTLE CLUSTER	11	19	10-26483	BOLT, CLAMP BRACKET TO TRANSOM	39	7
10-21091	SCREW, COVER TO CYLINDER BLOCK (1 1/8")	27	36	10-26500	SCREW, LATCH BASE TO FRONT COVER (9/16")	3	20
10-21091	SCREW, THROTTLE CONTROL HOUSING FASTENING (1 1/8") - UPPER	23	7	10-27791	SCREW, ANCHOR - TILT STOP LEVER	39	34
10-21449	SCREW, CRANKCASE TO CYLINDER BLOCK (2")	25	19	10-28405	SCREW, PLUG - MAIN FUEL JET CHANNEL	11	34
10-22290	SCREW, DRIVE - INDICATOR TO STEERING HANDLE BODY	33	5	10-28634	SCREW, GREASE FILLER	45	10
10-22421	SCREW, MOUNTING BRACKET TO POWERHEAD PLATE (1 1/4")	19	5	10-28636	SCREW, TRANSFER PORT COVER TO CYLINDER BLOCK (3/4")	27	32
10-22523	SCREW, FRONT COVER LATCH TO TOP COWL (3/4")	3	17	10-28638	SCREW, LOWER MOUNT COVER FASTENING	41	28
10-22659	SCREW, STARTER HOUSING TO CRANKCASE (1 5/8")	23	19	10-28653	SCREW, GREASE VENT	45	14
10-22659	SCREW, STARTER HOUSING TO CRANKCASE (1 5/8")	3	29	10-28782	SCREW, MANIFOLD COVER TO CYLINDER BLOCK (7/8")	27	42
10-22960	SCREW, VERTICAL SHAFT THROTTLE LEVER (1 3/8")	23	13	10-28845	SCREW, PLUG - BODY CHANNEL	11	28
10-23178	SCREW, PLUG - MAIN NOZZLE	11	30	10-29200	SCREW, BRACKET TO FUEL PUMP (5/8")	17	12
10-24644	SCREW, COVER TO CYLINDER BLOCK (1 3/8")	27	35	10-29237	SCREW, RETAINING - LEVER TO SWIVEL BRACKET	39	30
10-24644	SCREW, FOLLOWER TO POWERHEAD MOUNTING PLATE (1 3/4")	19	25	10-30663	SCREW, CONTACT HOUSING AND STATOR LEADS CLIP ATTACHING	7	26
10-24644	SCREW, STARTER HOUSING TO CRANKCASE (1 3/8")	3	29	10-30663	SCREW, COVER PLATE TO BOTTOM COWL(3/8")	35	14
10-24646	SCREW, TRANSFER PORT COVER TO CYLINDER BLOCK (5/8")	27	32	10-30663	SCREW, SPRING TO LIMITER FOLLOWER (3/8")	21	29
10-25256	SCREW, JUMPTER WIRE ATTACHING (5/16")	7	37	10-31002	SCREW, SET - SPEED AND SHIFT INDICATOR	33	4
10-25612	SCREW, DRIVE - SERIAL PLATE TO SWIVEL BRACKET	39	28	10-31206	SCREW, TERMINAL BLOCK TO EXHAUST MANIFOLD COVER (7/16")	27	44
10-25822	SCREW, STRAINER COVER	11	18	10-31716	SCREW, CAM RETAINER TO DRIVE SHAFT HOUSING	41	32
10-25876	SCREW, THROTTLE CLUSTER LINK	23	26	10-31716	SCREW, RUBBER BUMPER TO SADDLE (5/8")	41	18
10-26065	SCREW, CRANKCASE TO CYLINDER BLOCK (1")	25	19	10-32417	SCREW, RATCHET TO FLYWHEEL (5/8")	7	8
				10-32627	SCREW, FUEL PUMP TO BASE (1 1/2")	17	8
				10-34222	SCREW, TELL TALE NOZZLE TO BOTTOM COWL (1/2")	35	23
				10-34696	SCREW, THROTTLE LINK TO CONTACT HOUSING (3/4")	7	29
				10-35012	SCREW, TRIM COVER TO BOTTOM COWL (5/8")	41	9

PARTS INDEX

Part Number	Description	Pg.	Ref. No.	Part Number	Description	Pg.	Ref. No.
10-35563	SCREW, RATCHET TO FLYWHEEL (9/16")	7	7	10-57814	SCREW, STATOR TO END CAP (1 1/4")	7	11
10-37370	SCREW, REAR SHIELD TO TOP COWL (5/8")	3	8	11-20061	NUT, CONNECTING ROD SCREW	31	4
10-37562	SCRE, REAR MOUNTING BRACKET TO BOTTOM COWL (1")	5	53	11-20083	NUT, CARBURETOR MOUNTING STUDS	13	38
10-37562	SCREW, FRONT MOUNTING BRACKET TO BOTTOM COWL (1")	5	57	11-20110	NUT, CARBURETOR SCREEN STUD	15	12
10-37562	SCREW, STARTER HOUSING TO CYLINDER BLOCK (1")	3	27	11-20110	NUT, CHOKE SHUTTER STUD	15	9
10-37571	SCREW, DETENT SPRING TO STEERING HANDLE (1/2")	33	26	11-20110	NUT, PULLEY SCREW	5	36
10-37892	SCREW, PULLEY TO STARTER HOUSING (1")	3	33	11-20110	NUT, REED STOP MOUNTING SCREW	29	10
10-38792	SCREW, WIRE TO TERMINAL GLOCK (5/16")	27	45	11-20166	NUT, SHEAVE SHAFT (LEFT HAD THREAD)	5	38
10-39149	SCREW, SHIFT SHAFT BUSHING RETAINER	45	22	11-20190	NUT, COIL COVER SCREW	9	43
10-39669	SCREW, UPPER MOUNT COVER FASTENING (3/4")	41	24	11-20361	NUT, CHECK UNIT ADAPTOR SCREW	17	25
10-45379	SCREW, CONNECTING ROD	31	2	11-20361	NUT, RUBBER MOUNT TO BRACKET AND CRANKCASE	5	59
10-45775	SCREW, CENTER MAIN BEARING CLAMPING	29	5	11-20361	NUT, RUBBER MOUNT TO BRACKET AND CYLINDER BLOCK	5	55
10-45862	SCREW, FUEL PUMP BRACKET TO CRANKCASE (3/4")	17	13	11-20361	NUT, SECTOR GEAR TO SHIFT SHAFT	19	19
10-46801	SCREW, LOCK - CENTER MAIN BEARING (5/8")	25	22	11-20361	NUT, STARTER HOUSING TO CRANKCASE SCREW	3	30
10-46898	SCREW, LIMITER STOP TO FOLLOWER (7/16")	21	32	11-20361	NUT, STARTER HOUSING TO CRANKCASE SCREW	23	22
10-47819	SCREW, ANODIC PLATE TO GEAR HOUSING(1 1/4")	49	54	11-20586	NUT, SHAFT AND GEAR	23	24
10-49908	SCREW, PINION GEAR TO DRIVE SHAFT	45	8	11-20645	NUT, JAM - THROTTLE CLUSTER LINK SCREW	23	27
10-52195	SCREW, FLOAT BOWL COVER (SHORT)	11	10	11-20645	NUT, STATOR LEAD TO STOP SWITCH	37	30
10-52196	SCREW, FLOAT BOWL COVER (LONG)	11	11	11-21971	NUT, STOP SWITCH TO BOTTOM COWL	35	27
10-53481	SCREW, REED STOP MOUNTING	29	9	11-21971	NUT, STOP SWITCH TO BOTTOM COWL	37	27
10-56214	SCREW, STEERING HANDLE TO ARM BRACKET (5/8")	33	16	11-22339	NUT, FLYWHEEL	7	1
10-56266	SCREW, MAKET TO CONTACT HOUSING(3/8")	7	17	11-25168	NUT, VERTICAL SHAFT THROTTLE LEVER SCREW	23	14
10-56311	SCREW, COIL COVER TO REAR SUPPORT BRACKET (3 11/16")	9	42	11-26484	NUT, CLAMP BRACKET SCREW	39	9
10-56336	SCREW, COVER TO CONTACT HOUSING(1/2")	7	14	11-28656	NUT, THROTTLE LINK SCREW	7	32
10-56396	SCREW, SEAL RETAINER TO WATER PUMP BODY (1 1/8")	47	44	11-28770	NUT, CLAMP BRACKET STUD	39	15
10-56784	SCREW, CLAMP PLATE TO SWIVEL BRACKET	39	26	11-29250	NUT, POWERHEADS STUDS	41	16
				11-30499	NUT, TILT TUBE FASTENING	39	6
				11-34863	NUT, GEAR HOUSING TO DRIVE SHAFT HOUSING STUD	41	6
				11-35814	NUT, DRIVE SHAFT HOUSING STUD	41	5
				11-35814	NUT, TOP COWL STUD	3	6
				11-39299A2	PLATE ASSEMBLY, MOUNTING SWITCH	35	1

PARTS INDEX

Part Number	Description	Pg.	Ref. No.	Part Number	Description	Pg.	Ref. No.
11-45076	ONUT, IGNITION COIL			12-29245	WASHER, SHIFT SHAFT . . .	19	18
	TERMINAL	9	40	12-30164	WASHER, THROTTLE LONK	7	35
11-45592	NUT, WATER PUMP STUDS	47	47	12-30314	WASHER, NYLON - CHOKE		
11-45774	NUT, CENTER MAIN				KNOB AND SHAFT	15	2
	BEARING CLAMPING			12-33432	WASHER, GEAR HOUSING		
	SCREW	29	6		COVER	49	72
11-45812	NUT, THROTTLE LINK	7	34	12-33434	WASHER, THRUST -		
11-46355	NUT, PROPELLER				REVERSE GEAR	49	65
	RETAINING	49	78	12-34392	WASHER, THROTTLE LINK		
11-46438	NUT, FUEL PUMP BRACKET				SCREW	7	30
	SCREW	17	14	12-35559	WASHER, STARTER		
11-46793	NUT, CO-PILOT DISC TO				SHEAVE RETAINER	5	47
	SADLE SCREW	39	19	12-36001	WASHER, WATER PUMP		
11-46793	NUT, CRANKCASE SCREW .	25	21		STUDS	47	46
11-46793	NUT, CRANKCASE STUD . .	25	11	12-36281	WASHER, FLYWHEEL NUT .	7	2
11-46793	NUT, POWERHEADS STUDS	41	16	12-36555	WASHER, NYLON - WATER		
11-46793	NUT, STEERING ARM				INLET TUBE	35	2
	BRACKET FASTENING			12-36555	WASHER, NYLON - WATER		
	SCREW	33	28		PUMP BODY	47	41
11-46887	NUT, CYLINDER BLOCK			12-38949	WASHER, SEALING - STOP		
	COVER SCREW	27	37		SWITCH	35	25
11-46887	NUT, LIMITER FOLLOWER			12-47275	WASHER, NEEDLE BEARING		
	SCREW	19	27		RETAINING	31	5
11-46887	NUT, MOUNTING BRACKET			12-47960	WASHER, CHOKE SHUTTER		
	SCREW	19	6		STUD	15	8
11-46887	NUT, THROTTLE CONTROL			12-48679	WASHER, THROTTLE SHAFT		
	HOUSING SCREW	23	6		AND GEAR	23	10
11-46887	NUT, THROTTLE CONTROL			12-49221	WASHER, NEOPRENE -		
	HOUSING SCREW	23	8		GEAR HOUSING		
11-46887	NUT, TILT STOP LEVER				FLUSHING PLUG	45	13
	SCREW	39	33	12-52864	SHIM, CLAMP BRACKET		
11-56325	NUT, CABLE INSULATOR . .	7	22		TILT TUBE	39	5
11-57146	NUT, REVERSE LOCK LINK			12-56077	WAHSER, WEAR - CONTACT		
	ROD	41	31		HOUSING TO		
12-20128	WASHER, FUEL PUMP				CRANKCASE TOP	7	23
	SCREWS	17	9	12-57029	WASHER, STARTER		
12-20214	WASHER, THUMB SCREW .	39	3		HOUSING SCREW(PART		
12-20260	WASHER, GREASE FILLER				OF STARTER HOUSING		
	SCREW	45	11	12-59061	ASSY)	23	20
12-20262	WASHER, GREASE VENT				WASHER, STATOR LEAD TO		
	SCREW	45	15	13-20160	STOP SWICH	35	25
12-20684	RING, RUBBER -				WASHER, WAVE - STARTER		
	CENTRIFUGAL SLINGER				SHEAVE TENSION	5	48
	(DRIVE SHAFT)	47	48	13-21972	LOCKWASHER, STOP		
12-20722	WASHER, TOP COWL STUD	3	5		SWITCH CONNECTOR . .	35	26
12-24664	WASHER, SHAFT AND GEAR	23	23	13-21972	LOCKWASHER, STOP		
12-24676	WASHER, LIMITER STOP				SWITCH CONNECTOR . .	37	26
	SCREW	21	31	13-26992	LOCKWASHER, CAM		
12-24812	WASHER, CLAMP BRACKET				RETAINER SCREW	41	33
	STUD	39	13	13-26992	LOCKWASHER, RATCHET		
12-26014	WASHER, LATCH BASE				SCREW	7	9
	SCREW	3	21	13-26992	LOCKWASHER, RUBBER		
12-26485	WASHER, CLAMP BRACKET				BUMPER SCREW	41	19
	SCREW	39	8	13-26993	LOCKWASHER, CLAMP		
12-27025	WASHER, PROPELLER NUT(BRACKET STUD	39	14
	SERIAL #2827677 THRU			13-26993	LOCKWASHER, STARTER		
	#2893435)	49	77		HOUSING TO CYLINDER		
12-29245	WASHER, FRONT COVER				BLOCK SCREW	3	28
	RELEASE BUTTON	3	15	13-26996	LOCKWASHER, IGNITION		
					COIL TERMINAL	9	39

PARTS INDEX

Part Number	Description	Pg.	Ref. No.	Part Number	Description	Pg.	Ref. No.
13-26996	LOCKWASHER, STATOR			16-39766	STUD, CYLINDER BLOCK TO		
	LEAD NUT	37	29		DRIVE SHAFT HOUSING		
13-29720	WASHER, WAVE - STARTER				(2 1/8")	25	12
	PAWL	5	43	16-53050	STUD, CHOKE SHUTTER TO		
13-29720	WASHER, WAVE -				CARBURETOR (1 7/16") ..	15	7
	THROTTLE LINK SCREW	7	31	16-53820	STUD, CARBURETOR		
13-36076	WASHER, WAVE - TILT				SCREEN TO		
	STOP LEVER SCREW ...	39	31		CARBURETOR (1 1/16") ..	15	11
13-36206	WASHER, WAVE - SHIFT			16-56299	STUD, DRIVE SHAFT HSG.		
	SHAFT	19	13		TO GEAR HSG. (2 5/16") .	41	2
13-52197	LOCKWASHER, FLOAT			16-58134	STUD, DRIVE SHAFT HSG.		
	BOWL COVER SCREW ..	11	12		TO GEAR HSG. (3 15/16")	41	3
13-59145	WASHER, WAVE - CONTACT			16-58135	STUD, GEAR HOUSING TO		
	HOUSING TO				DRIVE SHAFT HOUSING		
	CRANKCASE TOP	7	24		(4 13/16")	45	4
14-20091	TAB WASHER, CENTER			16-58137	STUD, WATER PUMP TO		
	MAIN BEARING LOCK				GEAR HOUSING (3 1/8") .	45	3
	SCREW	25	23	16-59620	STUD, CLAMP BRACKET (8")	39	11
14-20165	TAB WASHER, SHEAVE			17-20032	DOWEL PIN, CENTER MAIN		
	SHAFT NUT	5	37		BEARING	29	3
14-49911	TAB WASHER, PINION GEAR			17-20032	DOWEL PIN, MAIN BEARING		
	SCREW	45	7		TO CYLINDER BLOCK ...	29	11
15-20788A1	SHIM, BALL BEARING TO			17-20201	PIN, DOWEL - GEAR		
	GEAR HOUSING(.002-3-5-				HOUSING TO DRIVE		
	10)	49	55		SHAFT HOUSING	45	2
15-20804A1	SHIM, BALL BEARING TO			17-23784	PIN, DOWEL - CRANKCASE		
	GEAR HOUSING (.002-3-5-				TO CYLINDER BLOCK ...	25	9
	10)	45	23	17-24865	PIN, GROOVE - STATOR		
15-20804A1	SHIM, GEAR HOUSING TO				PLATE LEVER TO		
	WATER PUMP BASE(.002-				VERTICAL SHAFT	23	15
	3-5-10)	45	26	17-25905	PIN, ROLL - DETENT CAM		
15-28212010	SHIM, LIMITER FOLOWER				TO SHIFT SHAFT	19	12
	SCREW	19	26	17-25905	PIN, ROLL - SHIFT		
15-33431A1	SHIM, GHRUST WASHER TO				CONTROL LEVER TO		
	GEAR HOUSING (.002-3-5-				SHIFT SHAFT	19	15
	10)	49	66	17-26862	PIN, BALL GEAR TO		
15-37711020	SHIM , RETAINING SCREW .	39	32		STEERING HANDLE		
15-48002015	SHIM, STEERING HANDLE				SHAFT	33	12
	PIVOT TO BRACKET (.015)	33	15	17-26862	PIN, BALL GEAR TO		
15-56191A1	SHIM, BALL BEARING TO				UNIVERSAL JOINT	33	20
	CRANKCASE TOP (.002-3-						
	5-10)	25	3	17-33522	PIN, ROLL - CAM LEVER TO		
16-20462	STUD, CRANKCASE TO				RETAINER	43	37
	CYLINDER BLOCK)1			17-35973	PIN, DOWEL _ WATER		
	5/16")	25	10		PUMP BASE TO WATER		
16-20657	STUD, CLAMP BRACKET ..	39	11		PUMP BODY	45	32
16-20991	STUD, CRANKCASE TO			17-39585	SWIVEL PIN	39	16
	DRIVE SHAFT HOUSING			17-39599	PIN, PIVOT - FRONT COVER		
	(1 5/8")	25	16		LATCH HOOK	3	24
16-20991	STUD, CYLINDER BLOCK TO			17-48660	PIN, THROTTLE SHAFT AND		
	DRIVE SHAFT HOUSING				GEAR	23	11
	(1 5/8")	25	13	17-53372	PIN, CROSS - RATCHET TO		
16-21553	STUD, TOP COWL TO				PROPELLER SHAFT	49	60
	MOUNTING BRACKET (1			17-55453	PIN, REED STOP	29	4
	1/2")	3	4	17-56373A1	TILT LOCK PIN ASSEMBLY .	39	10
16-21553	STUD, TOP COWL TO			17-58998	PIN, ROLL - CAM LEVER TO		
	MOUNTING BRACKETS (1				RETAINER	43	37
	1/2")	3	4	17-59798	SWIVEL PIN	39	16
16-23740	STUD, CARBURETOR TO			18-45882	COTTER PIN, REVERSE		
	CRANKCASE (1 3/32") ...	25	17		LOCK LEVER TO ROD ...	39	38

PARTS INDEX

Part Number	Description	Pg.	Ref. No.	Part Number	Description	Pg.	Ref. No.
19-32298	PLUG, DRIVE SHAFT HOUSING STUD	41	4	23-33462	BUSHING, NYLON - SHAFT AND GEAR (THROTTLE CONTROL HOUSING) . . .	23	9
19-48750	PLUG, GEAR HOUSING FLUSHING	45	12	23-34237	COLLAR, GUIDE - PROPELLER SHAFT	49	74
21-27146A1	CHECK VALVE ASSEMBLY, CRANKCASE	25	15	23-45170	SLEEVE, GUIDE - WATER INLET TUBE	47	45
21-28481A1	CHECK VALVE ASSEMBLY .	25	26	23-45482	SPACER, SHEAVE SHAFT .	5	45
21-28481A1	CHECK VALVE ASSEMBLY .	25	26	23-46406	BUSHING, STATOR PLATE CONTROL LEVER	23	21
21-28483A1	CHECK VALVE AND HOSE CONNECTOR ASSEMBLY, BLEED HOSE	25	25	23-47818	BUSHING, STEERING ARM BRACKET	33	24
21-30430A2	CHECK VALVE ASSEMBLY .	17	2	23-48005	SLEEVE, UNIVERSAL JOINT	33	18
21-55621A1	CHECK VALVE ASSEMBLY, BLEED HOSE	25	24A	23-48661	BUSHING, CYLON - STATOR PLATE LEVER	23	16
22-22946	SLEEVE, RUBBER - FUEL PUMP INLET FITTING . . .	17	16	23-49555	BUSHING, RUBBER - STEERING HANDLE	33	9
22-22948	NUT, FUEL PUMP INLET FITTING	17	17	23-59621	SPACER, CLAMP BRACKET STUD	39	12
22-22995	FITTING, INLET - FUEL PUMP	17	15	24-20099	SPRING, COMPRESSION - FRONT COVER RELEASE BUTTON	3	14
22-23125	ELBOW, BLEED HOSE TO CYLINDER BLOCK	25	24	24-23067	SPRING, ADAPTOR STEM .	17	20
22-25885	ELBOW, TELL TALE HOSE TO CYLINDER BLOCK . . .	35	21	24-29340A1	SPRING, STARTER REWIND	5	40
22-31345	FITTING, GREASE - SWIVEL BRACKET	39	22	24-33413	SPRING, TENSION - REVERSE LOCK LINK ROD	41	30
22-33373	ELBOW, HOSE TO CYLINDER BLOCK (90) . .	17	31	24-33418	SPRING, REVERSE LOCK LEVER	39	39
22-53553	ELBOW, HOSE TO CYLINDER BLOCK (45) . .	17	28	24-33479	SPRING, CAM FOLLOWER .	49	52
22-54064	CONNECTOR, HOSE TO FUEL PUMP(NOT AS SHOWN)	17	26	24-39598	SPRING, TORSION - FRONT COVER LATCH HOOK . . .	3	23
22-54090	ELBOW, HOSE TO FUEL PUMP (90)	17	30	24-39627	SPRING, DETENT - MOUNTING BRACKET . . .	19	7
22-57785	FITTING, BLEED HOSE ELBOW	25	29	24-39675	SPRING, NEUTRAL SPEED LIMITER FOLLOWER	21	28
22-58199	FITTING, BLEED HOSE	25	29	24-45823	SPRING, PAWL RETAINER PLATE	5	50
23-20159	BUSHING, SPRING GUIDE .	5	41	24-47744	SPRING, DETENT - STEERING HANDLE	33	25
23-20658	SPACER, CLAMP BRACKET STUD	39	12	24-47898	SPRING, TORSION - CHOKE SHUTTER TENSION	15	6
23-26841	BUSHING, NYLON - REVERSE LOCK LEVER ROD	39	37	24-47968	SPRING, TENSION - CHOKE KNOB AND SHAFT	15	3
23-27024	SPACER, SPLINE - PROPELLER SHAFT	49	76	24-53373	SPRING, RETAINING - CROSS PIN	49	61
23-28100	BUSHING, NYLON - STEERING HANDLE	33	10	25-20081	"O" RING, CRANKCASE TOP	25	2
23-30676A1	BUSHING ASSEMBLY, SHIFT SHAFT	45	19	25-20195	"O" RING, IDLE RELIEF TUBE	41	15
23-30677	BUSHING NYLON - STEERING HANDLE TO BODY	33	6	25-20415	"O" RING, ADAPTOR STEM .	17	21
23-30677	BUSHING, NYLON - SHIFT CONTROL SHAFT	19	23	25-26802	"O" RING, SHIFT SHAFT BUSHING	45	20
23-30678	BUSHING, NYLON - SHIFT SHAFT	19	10	25-26802	"O" RING, UPPER - DRIVE SHAFT	47	49
23-30977	SPACER, PULLEY SCREW .	3	35	25-29845	"O" RING, SWIVEL BRACKET	39	21
				25-33465	"O" RING, BEARING CARRIER	49	67
				25-33466	"O" RING, WATER PUMP BASE	45	28
				25-37340	"O" RING, FLYWHEEL NUT .	7	3

PARTS INDEX

Part Number	Description	Pg.	Ref. No.	Part Number	Description	Pg.	Ref. No.
25-38933	"O" RING, LOWER SHIFT SHAFT	45	17	30-25398	BEARING, BALL - REVERSE GEAR	49	64
25-38933	"O" RING, SHIFT CONTROL SHAFT	19	22	30-47158	BEARING, BALL - DRIVE SHAFT	45	24
26-20070	OIL SEAL, WATER PUMP BASE	45	30	30-54215	BEARING, BALL - CRANKCASE TOP (UPPER)	25	4
26-20070	OIL SEAL, WATER PUMP BODY	47	40	30-54215	BEARING, BALL - CRANKCASE(LOWER)	27	46
26-25329	SEAL , RUBBER - WATER INLET TUBE	35	3	31-20594	BEARING, ROLLER - CRANKCASE TOP (UPPER)	25	5
26-25329	SEAL, WATER PUMP BODY	47	42	31-28157	BEARING, ROLLER - BEARING CARRIER	49	69
26-26805	OIL SEAL, BEARING CARRIER	49	71	31-28157	BEARING, ROLLER - DRIVE SHAFT	45	5
26-27163	OIL SEAL, BEARING CARRIER (SPRING LOADED)	49	70	31-28157	BEARING, ROLLER - FORWARD GEAR	49	58
26-30696	OIL SEAL, SHIFT SHAFT BUSHING	45	21	32-32840A1	HOSE, BLEED - CYLINDER BLOCK	25	27
26-33467	OIL SEAL, WATER PUMP BASE (SPRING LOADED)	45	31	32-32840A1	HOSE, BLEED - CYLINDER BLOCK (5")	25	27
26-56394	OIL SEAL, CRANKCASE (LOWER)	27	47	32-34395A1	HOSE, TELL TALE - COWL TO CYLINDER BLOCK (11"	35	20
26-56747	OIL SEAL, CRANKCASE TOP (UPPER)	25	6	32-39586	TUBE, WATER OUTLET (SHORT SHAFT)	41	7
27-27936	GASKET, TRANSFER PORT COVER	25	31	32-39587	TUBE, WATER OUTLET(LONG SHAFT)	41	7
27-31402	GASKET, CARBURETOR FLANGE	13	37	32-45054	TUBE, NYLON - IDLE RELIEF PLATE	41	14
27-39316	GASKET, BAFFLE PLATE TO MANIFOLD COVER	27	40	32-48019	FUEL LINE, INLET - ADAPTOR TO FUEL PUMP	17	18
27-39401	GASKET, POWERHEAD TO MOUNTING PLATE	35	6	32-48638	HOSE, FUEL PUMP TO CYLINDER BLOCK (2 3/8")	17	27
27-39402	GASKET, MOUNTING PLATE TO DRIVE SHAFT HOUSING	35	8	32-54429	FUEL LINE, FUEL PUMP TO CARBURETOR (6 1/2")	17	10
27-39402	GASKET, MOUNTING PLATE TO DRIVE SHAFT HOUSING	41	11	33-58194	SPARK PLUG (AC #40FFK)	9	48
27-39623	GASKET, FACT PLATE TO WATER PUMP BODY (UPPER)	47	35	34-32038	REED STOP, MAIN BEARING REED VALVES	29	8
27-39625	GASKET, WATER PUMP BASE TO FACE PLATE (LOWER)	47	33	34-56704A1	REED SET, CENTER MAIN BEARING (MATCHED)	29	7
27-39626	GASKET, WATER PUMP BASE TO GEAR HOUSING	45	27	35-53596	SCREEN, FILTER - CARBURETOR	15	10
27-45088	GASKET, CYLINDER BLOCK TO BAFFLE PLATE	27	38	37-56669A1	DECAL SET (ENGINE) - MERC 200	1	-
27-45088A4	GASKET SET (MERC 200)	1	-	37-56669A2	DECAL SET (ENGINE) - MERC 200	1	-
27-52579	GASKET, CYLINDER BLOCK COVER	27	34	38-56745	SERIAL PLATE	39	27
28-20094	KEY, FLYWHEEL	29	12	39-27841A12	RING, PISTON	31	9
28-20094	KEY, FLYWHELL DRIVE	7	4	39-28616A12	RING, PISTON (.015 OVERSIZE)	31	9
28-56661	KEY, IMPELLER DRIVE	47	37	40-47276	LOCK RING, PISTON PIN	31	8
29-20046	BEARING, NEEDLE - CRANKPIN	31	3	43-30802	GEAR, SECTOR - SHIFT SHAFT	19	17
29-20063	BEARING, NEEDLE - PISTON PIN	31	6	43-33994	GEAR, SECTOR - SHIFT SHAFT	19	17
30-25398	BEARING, BALL - FORWARD GEAR	49	56	43-39477	GEAR, SECTOR - SHIFT CONTROL SHAFT	19	21
				43-39478	GEAR, PINION - THROTTLE CONTROL	23	1

PARTS INDEX

Part Number	Description	Pg.	Ref. No.	Part Number	Description	Pg.	Ref. No.
43-45189	GEAR, PINION	45	9	53-53204	RING, RETINING - BALL		
43-45227	FORWARD GEAR				GEAR	33	21
	ASSEMBLY	49	57	53-58656	RING, RETAINING - ROPE		
43-45229	REVERSE GEAR ASSEMBLY	49	63		GUIDE TO TOP COWL . . .	3	3
43-46383	SHAFT AND GEAR,			54-20386	CLAMP, BLEED HOSE		
	THROTTLE	23	4		ATTACHING	25	28
43-53205	GEAR, BALL - STEERING			54-20387	CLAMP, BLEED HOSE		
	HANDLE SHAFT	33	11		ATTACHING	25	28
43-53205	GEAR, BALL - UNIVERSAL			54-20387	CLAMP, FUEL PUMP HOSE		
	JOINT	33	19		TO ELBOWS	17	29
43-58972	GEAR, SECTOR - SHIFT			54-26550	CLIP, CONTACT HOUSING		
	CONTROL SHAFT	19	21		AND STATOR LEADS . . .	7	25
44-34238A2	PROPELLER SHAFT			90-56969	MERC 200 PARTS LIST . . .	1	-
	ASSEMBLY(INCLUDES			92-25234--1	GLUE (BLANKET ADHESIVE)	1	-
	REF. #74-----A-23-34237 .	49	62	237-3973A1	FLYWHEEL ASSEMBLY . . .	7	5
45-56792A1	DRIVE SHAFT ASSEMBLY(332-2854	NIPPLE, IGNITION COIL . . .	9	46
	SHORT SHAFT)	45	6	336-3955A1	COIL ASSEMBLY, IGNITION	7	38
45-56793A1	DRIVE SHAFT ASSEMBLY(336-3978A1	HOUSING ASSEMBLY,		
	LONG SHAFT)	45	6		CONTACT	7	15
46-48744A1	WATER PUMP BASE			336-3981	INSULATOR, CABLE TO		
	ASSEMBLY	45	29		CONTACT HOUSING	7	21
46-48749A2	WATER PUMP BODY			336-3987	HOLDER, CONTACT		
	ASSEMBLY	47	38		HOUSING	7	12
46-48749A3	HEAVY DUTY WATER PUMP			336-3988A1	COVER ASSEMBLY,		
	ASSEMBLY	1	-		CONTACT HOUSING	7	13
47-56780	IMPELLER, WATER PUMP			336-3989	WICK, CAM WIPER -		
	PART OF DRIVE SHAFT				CONTACT HOUSING	7	20
	ASSEMBLY	47	36	336-3996A4	STATOR ASSEMBLY	7	10
48-33480A1	PROPELLER ASSEMBLY(2			336-3996A7	STATOR ASSEMBLY	7	10
	BLADE - ALUMINUM - 11"			336-4318A2	MAKER ASSEMBLY,		
	PITCH) SHIPPED W	49	75		CONTACT HOUSING	7	16
48-33482A1	PROPELLER ASSEMBLY(3			336-4409A1	COIL ASSEMBLY, IGNITION	7	38
	BLADE - ALUMINUM - 9"			336-4429	HOLDER, CONTACT		
	PITCH)	49	75		HOUSING	7	12
48-34402A1	PROPELLER ASSEMBLY(2			394-1134A1	GROUND WIRE ASSEMBLY,		
	BLADE - BRONZE - 11"				COIL COVER SCREW . . .	9	50
	PITCH)	49	75	415-4072	CRANKSHAFT	29	1
48-37316A1	PROPELLER ASSEMBLY(3			534-3267A8	CENTER MAIN BEARING		
	BLADE - ALUMINUM -7"				ASSEMBLY	29	2
	PITCH)	49	75	619-3195A2	CONNECTING ROD		
50-22791A1	STARTER CABLE				ASSEMBLY	31	1
	ASSEMBLY	5	60	743-3193A2	PISTON AND PISTON PIN		
50-33000A1	RATCHET ASSEMBLY,				ASSEMBLY	31	7
	FLYWHEEL	7	6	743-3366A2	PISTON AND PISTON PIN		
50-45952	STARTER SHEAVE				ASSEMBLY (.015		
	ASSEMBLY	5	42		OVERSIZE)	31	9
50-47216A2	ELECTRIC STARTER			848-3999A3	CYLINDER BLOCK AND		
	MOTOR ASSEMBLY	1	-		CRANKCASE ASSEMBLY	25	8
52-53518A1	RATCHET ASSEMBLY,			1022-3567	COVER, CYLINDER BLOCK .	27	33
	SLIDING CLUTCH	49	59	1142-3986A1	CRANKCASE TOP		
53-22899	RING, RETAINING - SHIFT				ASSEMBLY	25	1
	SHAFT	45	18	1343-4183	CARBURETOR ASSEMBLY,		
53-23720	RING, RETAINING - UPPER				COMPLETE (KA-25A)	11	1
	MOUNT	41	22	1399-110A1	FLOAT ASSEMBLY	11	2
53-23721	RING, RETAINING - LOWER			1399-1133	COVER, FLOAT BOWL	11	9
	MOUNT	41	26	1399-1135	COVER, STRAINER	11	16
53-33463	RING, RETAINING - BALL			1399-1457	JET, MAIN FUEL (.057)	11	31
	BEARING	45	25	1399-1459	JET, MAIN FUEL (.059) -		
53-53204	RING, RETAINING - BALL				STANDARD	11	31
	GEAR	33	13	1399-1461	JET, MAIN FUEL (.061)	11	31

PARTS INDEX

Part Number	Description	Pg.	Ref. No.	Part Number	Description	Pg.	Ref. No.
1399-1473	INLET NEEDLE, SEAT AND GASKET	11	6				
1399-1655	JET, MAIN FUEL (.055)	11	31				
1399-1713	SCREW, IDLE ADJUSTMENT	11	35				
1399-1754	SCREEN, FILTER	11	14				
1399-2012	SHAFT, THROTTLE	11	21				
1399-2015	GASKET AND PACKING SET	13	36				
1399-3032	SHUTTER, THROTTLE	11	25				
1399-4255	REPAIR PARTS KIT	13	36				
1427-3293A1	CLAMP BRACKET ASSEMBLY	39	1				
1461-2683A2	SWIVEL BRACKET ASSEMBLY	39	20				
1560-2671A2	DRIVE SHAFT HOUSING ASSEMBLY(LONG SHAFT)	41	1				
1561-2672A4	DRIVE SHAFT HOUSING ASSEMBLY(SHORT SHAFT)	41	1				
1562-2673	SADDLE	41	20				
1627-3482A1	GEAR HOUSING ASSEMBLY(SERIAL #2827677 THRU #2893435)	45	1				
1627-3482A1	GEAR HOUSING ASSEMBLY(SERIAL #2827677 THRU #2893435) SEE PA	49	1				
1627-3482A13	GEAR HOUSING ASSEMBLY, COMPLETE (SHORT SHAFT) SERIAL #282767	47	-				
1627-3482A13	GEAR HOUSING ASSEMBLY, COMPLETE(SHORT SHAFT) SERIAL #2827677	45	-				
1627-3482A14	GEAR HOUSING ASSEMBLY, COMPLETE(LONG SHAFT)	45	-				
1627-3482A14	GEAR HOUSING ASSEMBLY, COMPLETE(LONG SHAFT)	47	-				
1627-4404A4	GEAR HOUSING ASSEMBLY, COMPLETE(SHORT SHAFT) SERIAL #2991679	45	-				
1627-4404A4	GEAR HOUSING ASSEMBLY, COMPLETE(SHORT SHAFT) SERIAL #2991679	47	-				
1627-4404A5	GEAR HOUSING ASSEMBLY, COMPLETE(LONG SHAFT)	45	-				
1627-4404A5	GEAR HOUSING ASSEMBLY, COMPLETE(LONG SHAFT)	47	-				
1627-4404A6	GEAR HOUSING ASSEMBLY(SERIAL #2991679 AND UP)	45	1				
1627-4404A6	GEAR HOUSING ASSEMBLY(SERIAL #2991679 AND UP)	49	1				
2127-2666A6	FRONT COVER ASSEMBLY COMPLETE	3	18				
2129-3956A2	BOTTOM COWL ASSEMBLY	35	9				
2129-4405A2	BOTTOM COWL ASSEMBLY	35	9				
2130-3974A2	TOP COWL ASSEMBLY	3	1				
2130-4361A2	TOP COWL ASSEMBLY SERIAL	3	1				
2133-2706A5	WRAP AROUND COWL ASSEMBLY, COMPLETE	3	9				