



# PARTS CATALOG

## MERC 60J

SERIAL NUMBER

60J ..... 2385673 THRU 2387383

# TABLE OF CONTENTS:

BOTTOM COWL AND ADAPTOR PLATE .....	18
CARBURETOR ASSEMBLY .....	4
CARBURETOR CHOKE LINKAGE .....	14
CLAMP AND SWIVEL BRACKET ASSEMBLY .....	8
DRIVE SHAFT HOUSING ASSEMBLY .....	10
FLYWHEEL ASSEMBLY AND THROTTLE CAM LINKAGE .....	2
FUEL PUMP ASSEMBLY .....	16
GEAR HOUSING ASSEMBLY, COMPLETE .....	12
MISCELLANEOUS/ACCESSORIES .....	1
PARTS INDEX .....	22

**NOTE:** *Indented description indicate that these parts are included in preceeding assembly.*

**AR** = As Required

**NSS** = Not Sold Separate

**OPT** = Optional

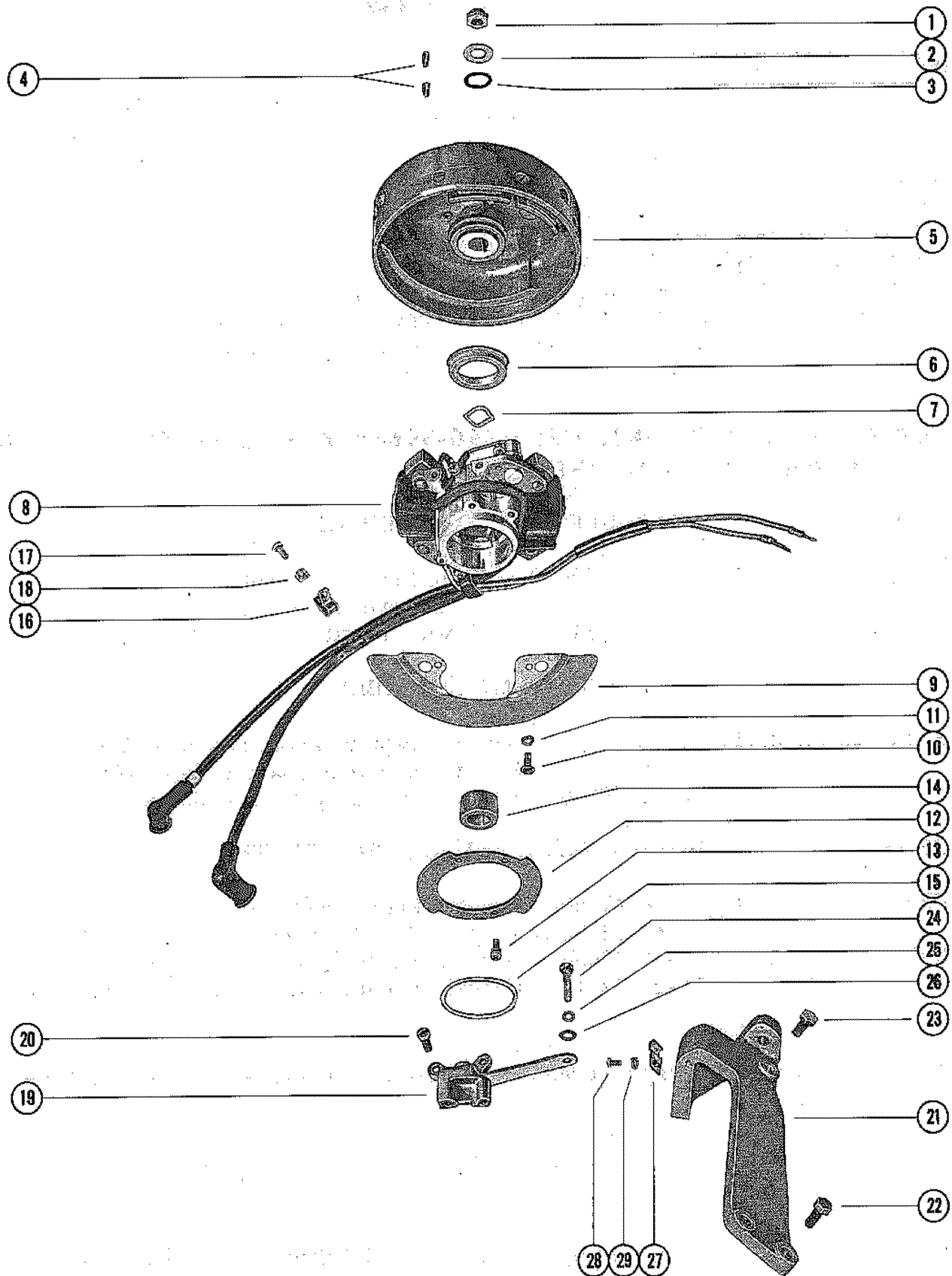
**NS** = Not Shown

**THESE PARTS BOOKS/FICHE CARD ARE COPYRIGHTED AND MAY NOT BE DISTRIBUTED OR REPRODUCED IN ANY OTHER FORMAT BY ANYONE OTHER THAN MERCURY MARINE WITHOUT THE PRIOR WRITTEN CONSENT OF MERCURY MARINE.**

# MISCELLANEOUS/ACCESSORIES

REF. NO.	PART NO.	SYM.	QTY.	DESCRIPTION
-	90-39634		0	PARTS LIST

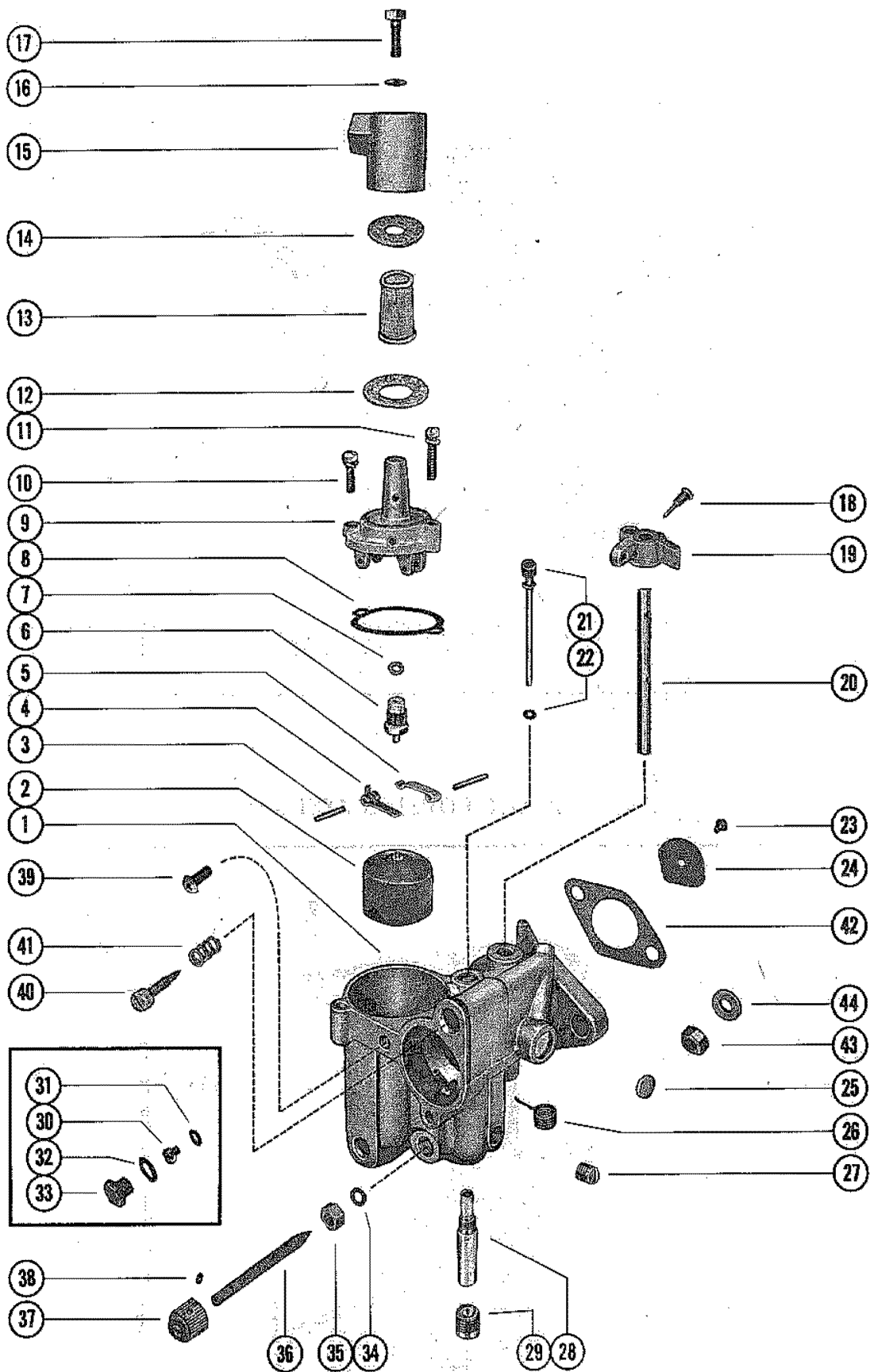
# FLYWHEEL ASSEMBLY AND THROTTLE CAM LINKAGE



# FLYWHEEL ASSEMBLY AND THROTTLE CAM LINKAGE

REF. NO.	PART NO.	SYM.	QTY.	DESCRIPTION
1	11-20696		1	NUT, FLYWHEEL
2	12-36282		1	WASHER, FLYWHEEL NUT
3	25-36284		1	"O" RING, FLYWHEEL HUB
4	28-20094		2	KEY, FLYWHEEL DRIVE
5	219-2246A4		1	FLYWHEEL ASSEMBLY, COMPLETE
6	23-34367		1	COLLAR, FLYWHEEL DUST SHIELD
7	13-22027		1	WASHER, WAVE-MAGNETO CAM TENSION
8	398-2574A4		1	STATOR PLATE ASSEMBLY, COMPLETE(SEE NOTE BELOW)
9	39326A1		1	SHIELD ASSEMBLY, STATOR PLATE
10	10-45742		2	SCREW, SHIELD TO STATOR PLATE
11	13-26996		2	LOCKWASHER, SHIELD SCREW
12	33904		1	RING, HOLD DOWN-STATOR PLATE
13	10-35400		4	SCREW, HOLD DOWN RING TO STATOR PLATE
14	398-2230		1	CAM, BREAKER
15	15-33910015		1	SHIM, STATOR PLATE TO UPPER END CAP (.015)
16	54-24836		2	CLIP, STATOR LEAD
17	10-30009		2	SCREW, STATOR LEAD CLIP TO PORT COVER
18	22789		2	"D" WASHER, LEAD CLIP SCREW
19	34363A2		1	THROTTLE CAM BRACKET ASSEMBLY
20	10-35450		2	SCREW, CAM BRACKET TO STATOR PLATE
21	52400		1	BRACKET, MOUNTING-THROTTLE CABLE
22	10-22956		2	SCREW, MOUNTING BRACKET TO CRANKCASE (7/8")
23	10-32228		1	SCREW, MOUNTING BRACKET TO CRANKCASE (5/8")
24	10-52437		1	SCREW, THROTTLE BRACKET TO MOUNTING BRACKET (5/8")
25	13-26992		1	LOCKWASHER, THROTTLE BRACKET SCREW
26	12-29245		1	WASHER, THROTTLE BRACKET SCREW
27	25788		1	PLATE, CLAMPING-THROTTLE CABLE
28	10-20055		2	SCREW, CLAMPING PLATE TO MOUNTING BRACKET (3/8")
29	13-26996		2	LOCKWASHER, CLAMPING PLATE ATTACHING SCREW

# CARBURETOR ASSEMBLY

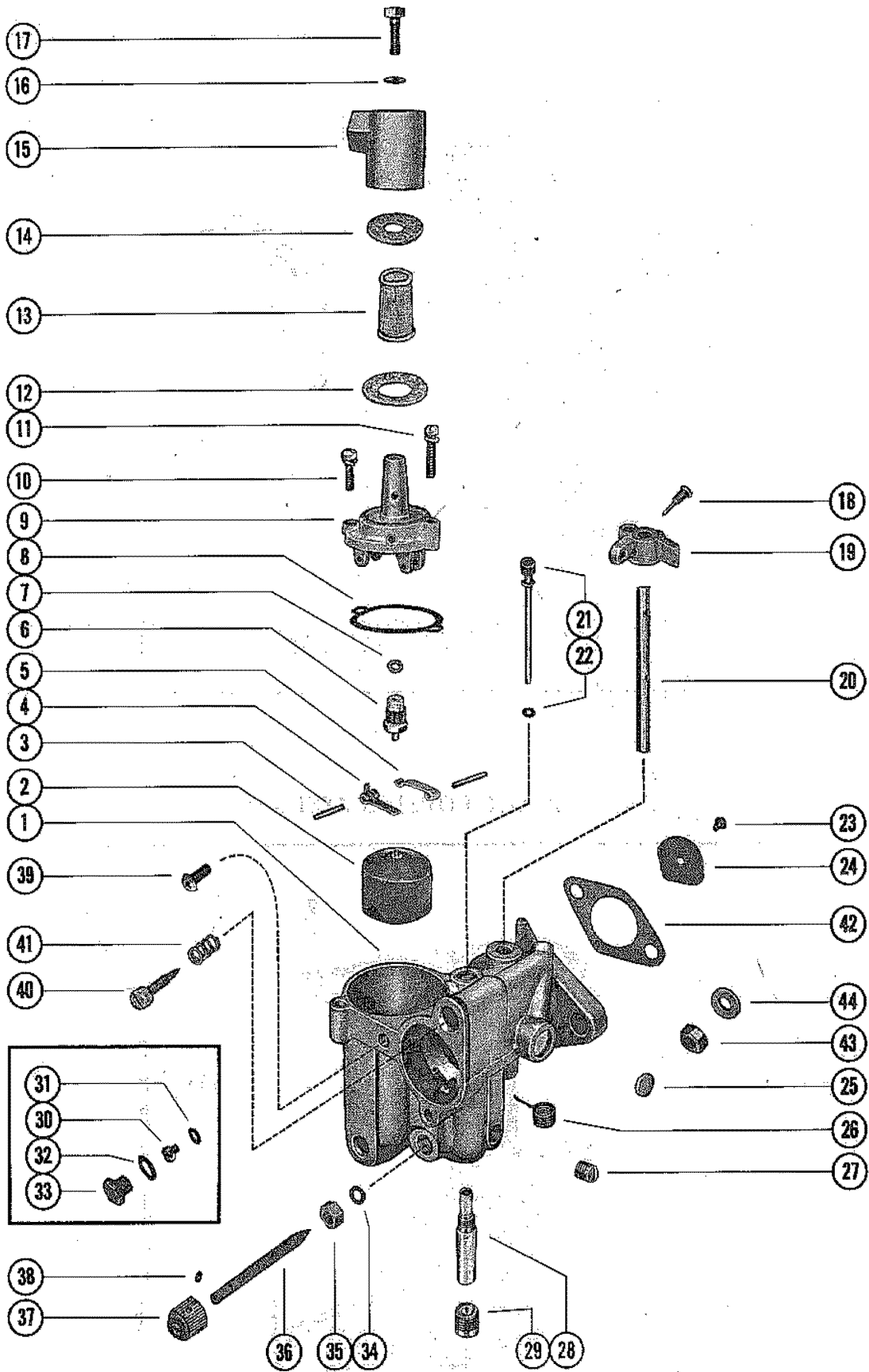


# CARBURETOR ASSEMBLY

REF. NO.	PART NO.	SYM.	QTY.	DESCRIPTION
1	1334-2697		1,	CARBURETOR ASSEMBLY, COMPLETE
	1334-1974A3		,1	CARBURETOR ASSEMBLY, COMPLETE(OPTIONAL)
2	1399-110A1		1,1	FLOAT ASSEMBLY
3	17-20853		2,2	PIN, FLOAT LEVER PINION
4	1399-102		1,1	LEVER, FLOAT (LOWER)
5	1399-101		1,1	LEVER, FLOAT (UPPER)
6	1399-1138		1,1	INLET NEEDLE, SEAT AND GASKET
7	27-25033		1,1	GASKET, INLET NEEDLE AND SEAT
8	1399-99		1,1	GASKET, FLOAT BOWL COVER
9	1399-1133		1,1	COVER, FLOAT BOWL
10	10-20854		1,1	SCREW, FLOAT BOWL COVER (SHORT)
11	10-25850		1,1	SCREW, FLOAT BOWL COVER(LONG)
12	27-34614		1,1	GASKET, STRAINER COVER (LARGE)
13	1399-1754		1,1	SCREN,FILTER
14	27-25849		1,1	GASKET, STRAINER COVER (SMALL)
15	1399-1135		1,1	COVER, STRAINER
16	27-25848		1,1	GASKET, STRAINER COVER SCREW
17	10-25822		1,1	SCREW, STRAINER COVER
18	10-20847		1,1	SCREW, THROTTLE STOP LEVER
19	1399-97		1,1	LEVER, THROTTLE STOP
20	1399-1716		1,1	SHAFT, THROTTLE
21	1399-2037		1,	TUBE, IDLE
	1399-1990		,1	TUBE, IDLE
22	27-23180		1,1	GASKET, IDLE TUBE
23	10-23035		1,1	SCREW AND LOCKWASHER, THROTTLE SHUTTER
24	1399-699		1,	SHUTTER, THROTTLE
	1399-3602		,1	SHUTTER, THROTTLE
25	19-20011		1,1	WELCH PLUG, BODY CHANNEL
26	24-26890		1,1	SPRING, THROTTLE SHAFT RETURN
27	10-28845		1,1	SCREW, PLUG-BODY CHANNEL
28	1399-2709		1,	MAIN NOZZLE
	1399-1991		,1	MAIN NOZZLE
29	10-23178		1,1	SCREW, PLUG-MAIN NOZZLE
30	1399-1765		1,	JET, MAIN FUEL (.45)-STANDARD
	1399-3603		,1	JET, MAIN FUEL-STANDARD
	1399-1864		OPT.,	JET, MAIN FUEL (.043)
	1399-1896		OPT.,	JET, MAIN FUEL (.041)
31	27-28409		1,1	GASKET, MAIN FUEL JET
32	27-28406		1,	GASKET, JET CHANNEL PLUG SCREW
33	10-28405		1,	SCREW, PLUG-MAIN FUEL JET CHANNEL
34	1399-3537		,2	PACKING, HIGH SPEED ADJUSTMENT SCREW A-1399-3541 GASKET SET A-1399-3541 <b>GASKET SET MUST BE USED FOR THE ENCLOSED PARTS.</b>

CONTINUED ON NEXT PAGE ➡

# CARBURETOR ASSEMBLY

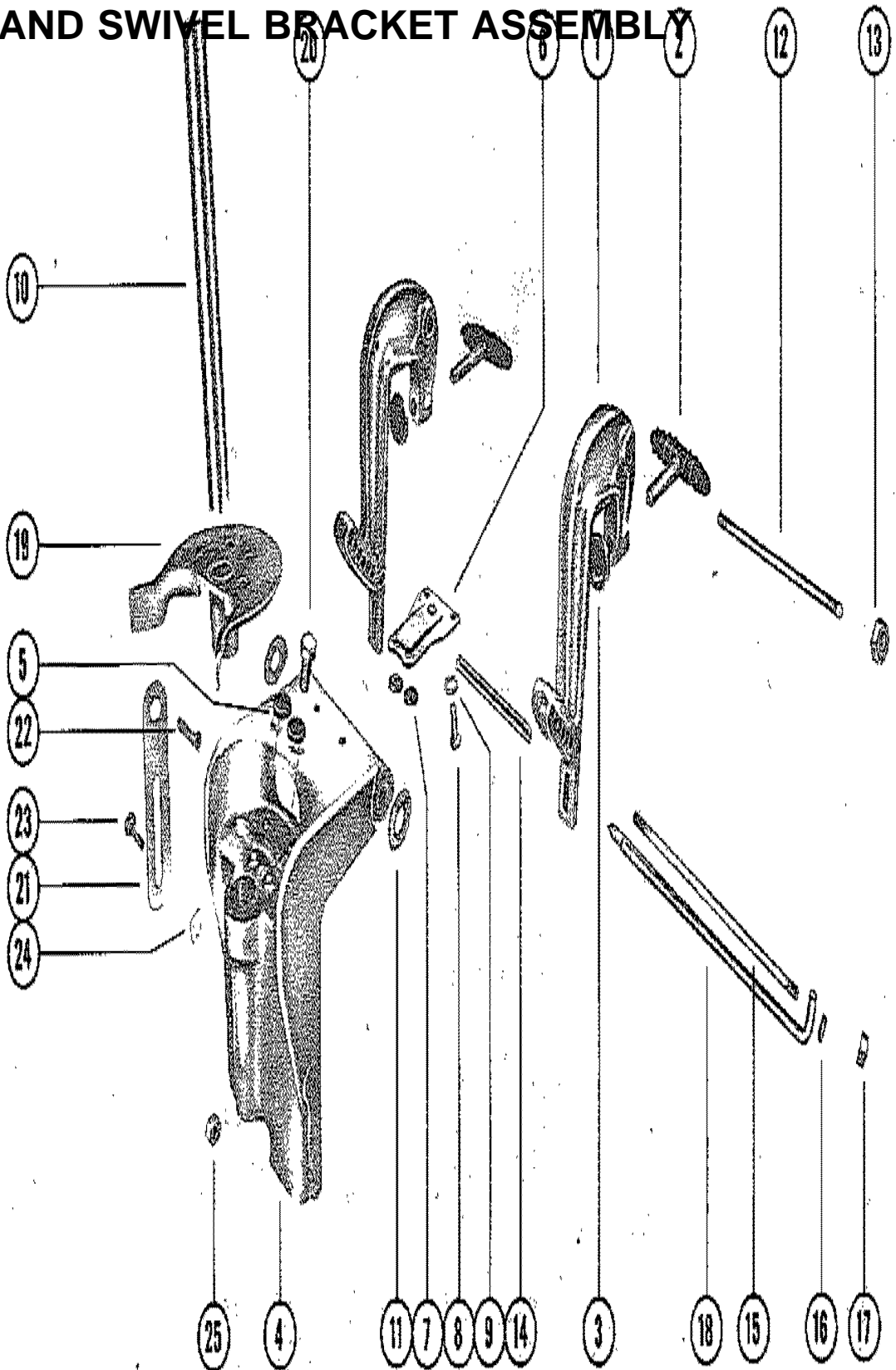




# CARBURETOR ASSEMBLY

REF. NO.	PART NO.	SYM.	QTY.	DESCRIPTION
35	11-20849		,1	NUT, PACKING-HIGH SPEED ADJUSTMENT SCREW A- <b>1399-3541 GASKET SET MUST BE USED FOR THE ENCLOSED PARTS.</b>
36	1399-1519		,1	SCREW, HIGH SPEED ADJUSTMENT A- <b>1399-3541 GASKET SET MUST BE USED FOR THE ENCLOSED PARTS.</b>
37	24823A1		,1	KNOB ASSEMBLY, HIGH SPEED ADJUSTMENT SCREW A- <b>1399-3541 GASKET SET MUST BE USED FOR THE ENCLOSED PARTS.</b>
38	10-22928		,1	SCREW, HIGH SPEED SCREW KNOB A- <b>1399-3541 GASKET SET MUST BE USED FOR THE ENCLOSED PARTS.</b>
39	10-22022		,1	SCREW, PLUG (CHOKE SHUTTER STUD HOLE) A- <b>1399- 3541 GASKET SET MUST BE USED FOR THE ENCLOSED PARTS.</b>
40	1399-2038		1,	SCREW, IDLE ADJUSTMENT
	1399-1989		,1	SCREW, IDLE ADJUSTMENT
41	24-27160		1,1	SPRING, IDLE ADJUSTMENT SCREW
-	<b>1399-1717</b>		<b>1,1</b>	<b>GASKET AND PACKING SET</b>
-	<b>1399-2710</b>		<b>1,</b>	<b>REPAIR PARTS KIT</b>
-	<b>1399-1992</b>		<b>,1</b>	<b>REPAIR PARTS KIT</b>
42	27-22023		1,1	GASKET, CARBURETOR FLANGE
43	11-46887		2,2	NUT, CARBURETOR MOUNTING STUDS
44	12-20583		1,1	WASHER, CARBURETOR MOUNTING STUD

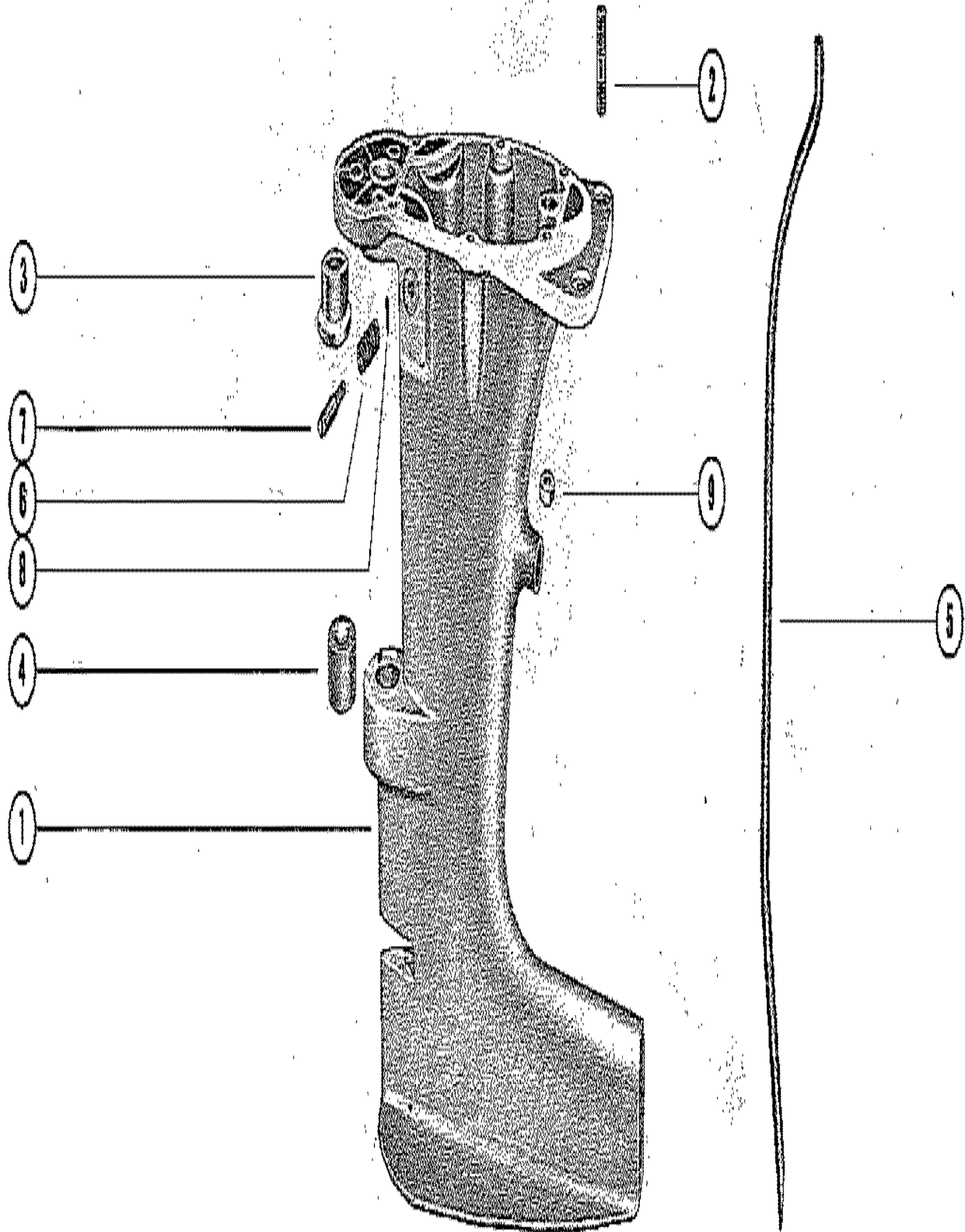
# CLAMP AND SWIVEL BRACKET ASSEMBLY



## CLAMP AND SWIVEL BRACKET ASSEMBLY

REF. NO.	PART NO.	SYM.	QTY.	DESCRIPTION
1	1463-3557A1		2	CLAMP BRACKET ASSEMBLY
2	22477A4		2	THUMB SCREW ASSEMBLY
3	12-20214		2	WASHER, THUMB SCREW
4	1402-134A1		1	SWIVEL BRACKET ASSEMBLY
5	20203		2	DISC, FRICTION
6	20701A1		1	CLAMP PLATE ASSEMBLY
7	20203		2	DISC, FRICTINO
8	10-21625		2	SCREW, CLAMP PLATE MOUNTING
9	13-26992		2	LOCKWASHER, CLAMP PLATE MOUNTING SCREW
10	17-20891		1	SWIVEL PIN, CO-PILOT DISC
11	15-20695		2	SHIM, CLAMP BRACKET TO SWIVEL BRACKET (.010)
12	16-20694		1	STUD, CLAMP BRACKET TO SWIVEL BRACKET
13	11-20696		2	NUT, CLAMP BRACKET TO SWIVEL BRACKET STUD
14	23-20658		1	SPACER, CLAMP BRACKET STUD
15	16-20657		1	STUD, CLAMP BRACKET
16	13-26993		2	LOCKWASHER, CLAMP BRACKET STUD
17	11-20083		2	NUT, CLAMP BRACKET STUD
18	17-28848A2		1	TILT LOCK PIN ASSEMBLY
19	20951		1	CO-PILOT DISC ASSEMBLY
20	10-47277		1	SCREW, CO-PILOT ADJUSTING
21	33512		1	LEVER, TILT STOP
22	10-20217		1	SCREW, ANCHOR-TILT STOP LEVER
23	10-27790		1	SCREW, RETAINING-TILT STOP LEVER
24	13-20846		1	WASHER, WAVE-RETAINING SCREW
25	11-46887		2	NUT, TILT STOP LEVER SCREW
-	<b>38-31042</b>		<b>1</b>	<b>SERIAL PLATE</b>
-	<b>10-28642</b>		<b>2</b>	<b>SCREW, DRIVE-SERIAL PLATE TO SWIVEL BRACKET</b>

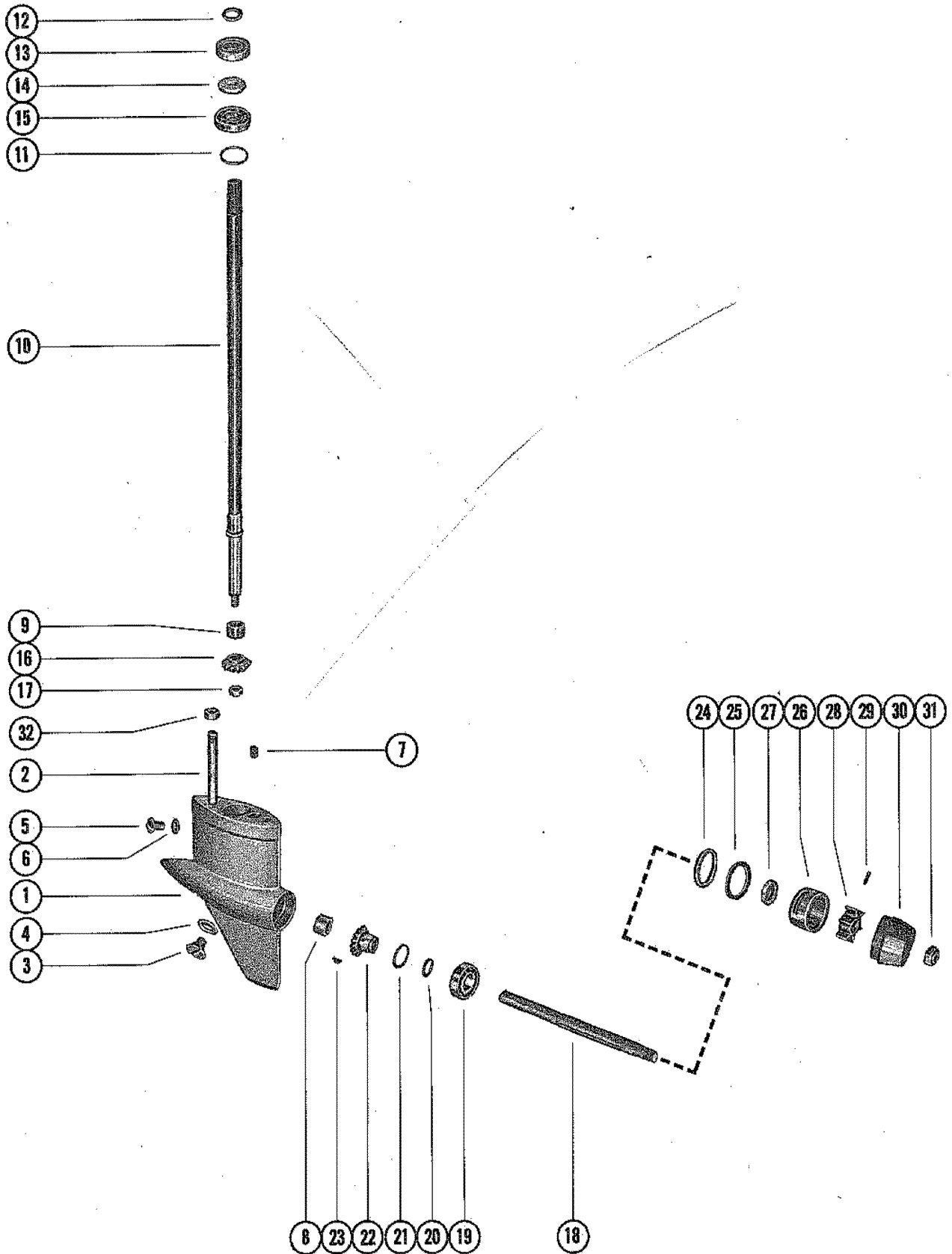
# DRIVE SHAFT HOUSING ASSEMBLY



# DRIVE SHAFT HOUSING ASSEMBLY

REF. NO.	PART NO.	SYM.	QTY.	DESCRIPTION
1	1569-3556A1		1	DRIVE SHAFT HOUSING ASSEMBLY
2	16-32698		1	STUD, DRIVE SHAFT HOUSING(1 13/16")
3	23-29669		1	BUSHING, UPPER
4	23-29670		1	BUSHING, LOWER
5	32-52459		1	TUBE, WATER INLET
6	24-20229		2	SPRING, CO-PILOT TO DRIVE SHAFT HOUSING
7	10-21070		2	SCREW, CO-PILOT SPRING GUIDE
8	18-21071		2	COTTER PIN, CO-PILOT SPRING GUIDE SCREW
9	11-46887		6	NUT, DRIVE SHAFT HOUSING TO POWERHEAD STUDS

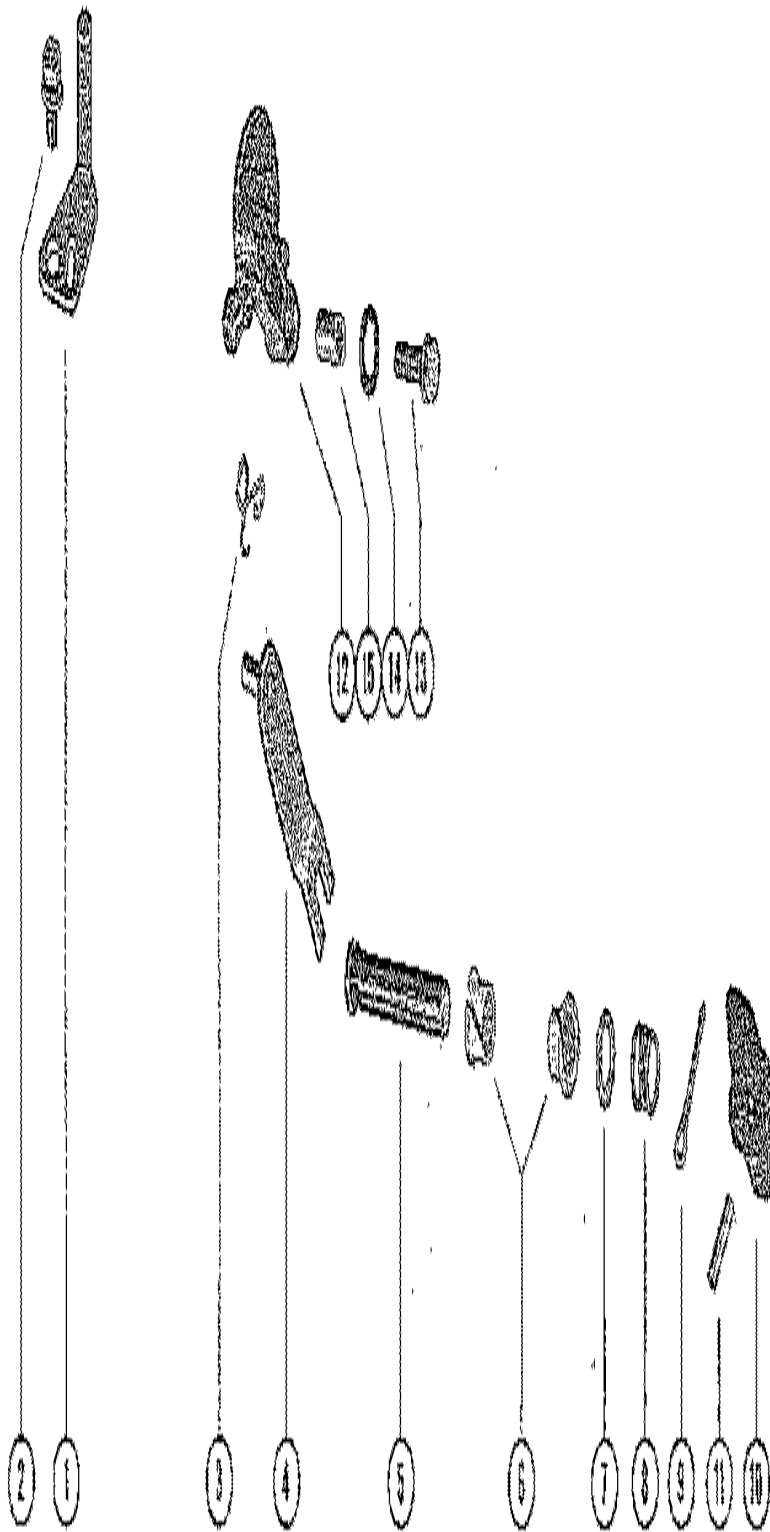
# GEAR HOUSING ASSEMBLY, COMPLETE



# GEAR HOUSING ASSEMBLY, COMPLETE

REF. NO.	PART NO.	SYM.	QTY.	DESCRIPTION
-	1639-3558A2		1	GEAR HOUSING ASSEMBLY, COMPLETE
1	1639-3558A1		1	GEAR HOUSING ASSEMBLY
2	16-23659		1	STUD, GEAR HOUSING TO DRIVE SHAFT HOUSING(3 11/16")
3	10-28634		1	SCREW, GREASE FILLER
4	12-20260		1	WASHER, GREASE FILLER SCREW
5	10-28653		1	SCREW, GEAR HOUSING VENT
6	12-20262		1	WASHER, GEAR HOUSING VENT SCREW
7	26-36556		1	SEAL, WATER TUBE
8	31-52440		1	BEARING, ROLLER-PROPELLER SHAFT
9	31-52398		1	BEARING, ROLLER-DRIVE SHAFT
10	45-52426		1	DRIVE SHAFT
11	15-22759A1		AR	SHIM ASSEMBLY, BALL BEARING TO GEAR HOUSING(.002-3-5)
12	25-21720		1	"O" RING, DRIVE SHAFT
13	52413A1		1	PILOT ASSEMBLY, DRIVE SHAFT
14	26-52415		1	OIL SEAL, DRIVE SHAFT PILOT
15	30-25124		1	BEARING, BALL-DRIVE SHAFT
16&22	43-52423A1		1	GEAR ASSEMBLY (PINION AND PROPELLER)
17	11-20110		1	NUT, PINION GEAR LOCKING
18	44-52441		1	SHAFT, PROPELLER
19	30-52422		1	BEARING, BALL-PROPELLER SHAFT
20	23-52442		1	SPACER, PROPELLER SHAFT
21	15-52439A1		AR	SHIM ASSEMBLY, BALL BEARING(.002-3-5-10)
23	28-52438		1	KEY, PROPELLER GEAR TO PROPELLER SHAFT
24	23-52425		1	SPACER, BALL BEARING TO WATER PUMP HOUSING
25	25-22762		1	"O" RING, WATER PUMP HOUSING
26	46-52399A1		1	WATER PUMP HOUSING ASSEMBLY
27	26-52414		1	OIL SEAL, WATER PUMP HOUSING
28	47-39074		1	IMPELLER, WATER PUMP HOUSING
29	17-39076		1	PIN, IMPELLER DRIVE
30	52401		1	COVER, WATER PUMP HOUSING
31	11-28010		1	NUT, PROPELLER
32	11-46793		2	NUT, DRIVE SHAFT HOUSING TO GEAR HOUSING

# CARBURETOR CHOKE LINKAGE

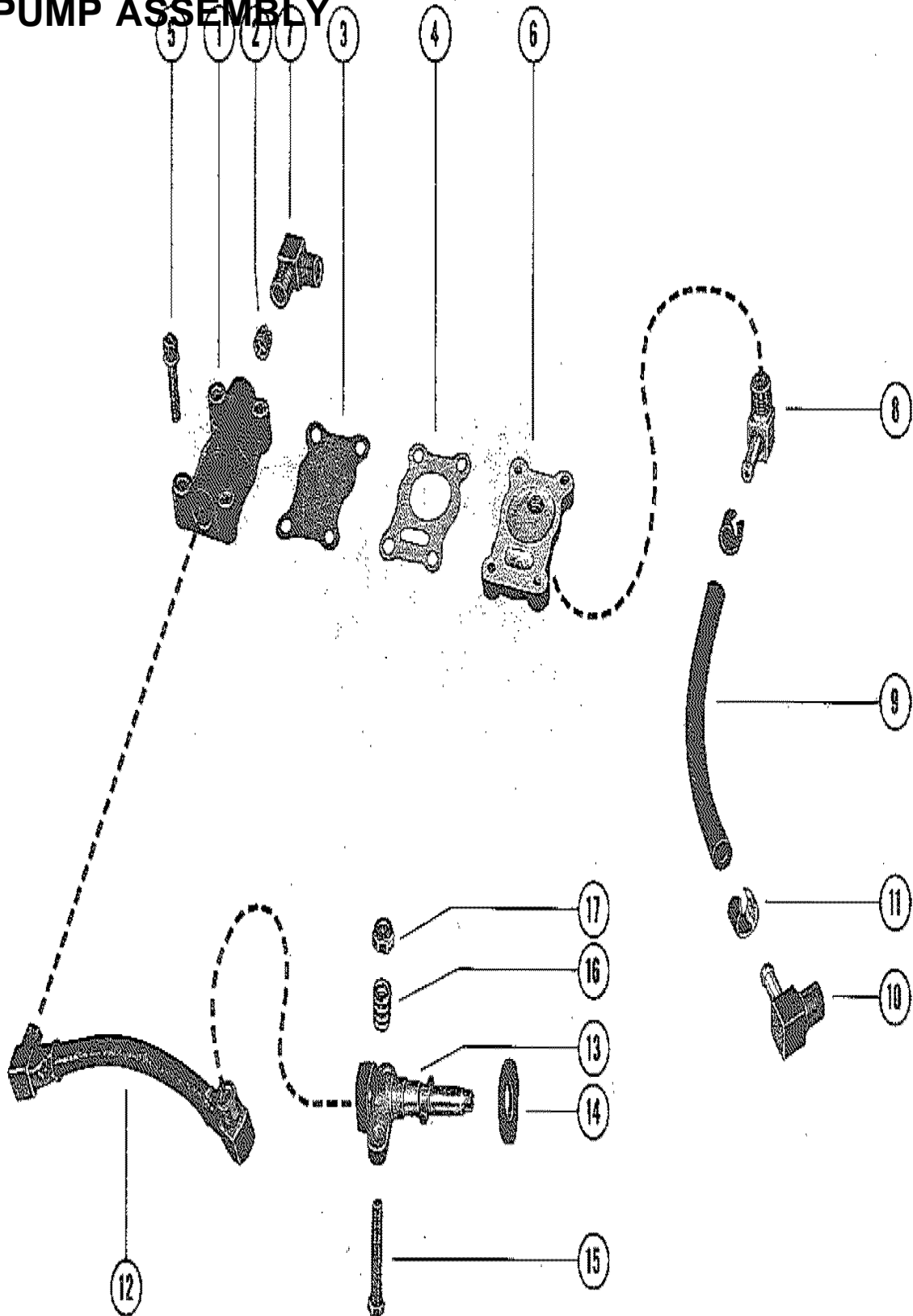




## CARBURETOR CHOKE LINKAGE

REF. NO.	PART NO.	SYM.	QTY.	DESCRIPTION
NS	10-20845		1	SCREW (1/4")
1	29493A1		1	THROTTLE LEVER ASSEMBLY
2	10-29239		1	SCREW, THROTTLE LEVER TO CARBURETOR (1/2")
3	24-32283		1	SPRING, CHOKE SHUTTER TO LEVER
4	31920A2		1	LEVER ASSEMBLY, CHOKE SHUTTER
5	39148		1	SHAFT, CHCOKE LEVER TO CHOKE KNOB
6	23-26841		2	BUSHING, NYLON - CHOKE LEVER SHAFT
7	12-30283		1	WASHER, CHOKE LEVER SHAFT
8	24-39040		1	SPRING, TENSION - CHOKE LEVER SHAFT
9	18-25191		1	COTTER PIN, CHOKE LEVER SHAFT
10	39055		1	KNOB, CHOKE
11	17-22896		1	PIN, ROLL - CHOKE KNOB TO SHAFT
12	34245		1	SHUTTER, CHOKE - CARBURATOR
13	10-31919		1	SCREW, CHOKE SHUTTER TO CARBURETOR (3/4")
14	13-34632		1	WASHER, WAVE - CHOKE SHUTTER SCREW
15	23-31313		1	SPACER, CHOKE SHUTTER SCREW

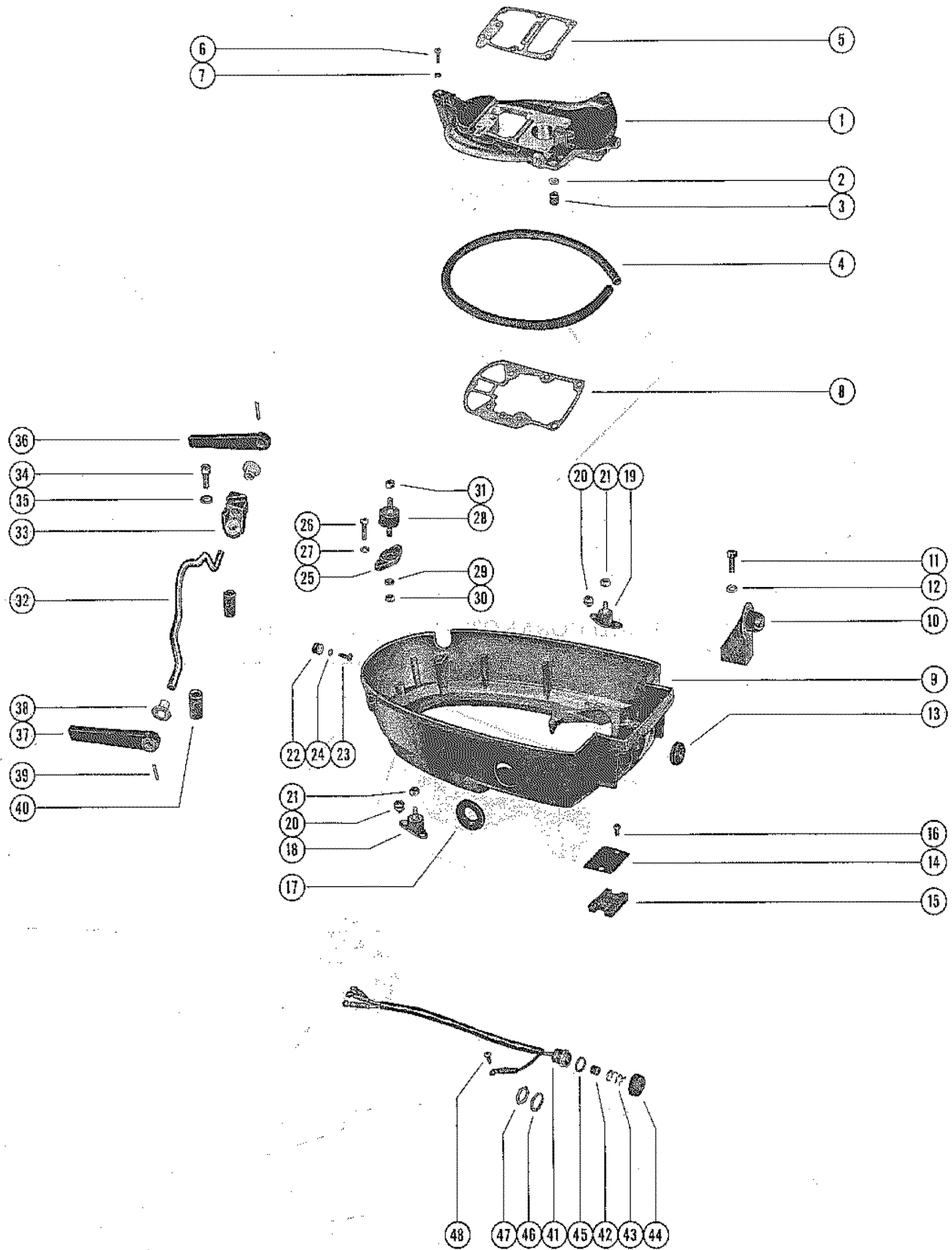
# FUEL PUMP ASSEMBLY



# FUEL PUMP ASSEMBLY

REF. NO.	PART NO.	SYM.	QTY.	DESCRIPTION
1	39082A4		1	FUEL PUMP ASSEMBLY
2	21-22974A3		1	CHECK VALVE ASSEMBLY
3	31503A1		1	DIAPHRAGM KIT, FUEL PUMP
4			1	GASKET, FUEL PUMP TO SPACER
5	10-29249		4	SCREW, FUEL PUMP TO SPACER (1")
6	39259		1	SPACER, FUEL PUMP
7	22-39079		1	ELBOW, FUEL PUMP TO CARBURETOR
8	22-33373		1	ELBOW, FUEL PUMP SPACER TO PRESSURE HOSE
9	32-39484		1	HOSE, PRESSURE - FUEL PUMP (4 3/8")
10	22-33373		1	ELBOW, CYCLINDER BLOCK TO PRESSURE HOSE
11	54-20387		2	CLAMP, PRESSURE HOSE FASTENING
12	32-39485		1	FUEL LINE, FUEL PUMP TO ADAPTOR (5 1/4")
13	32454		1	ADAPTOR, CHECK UNIT (FUEL LINE)
14	39052		1	SEAL, ADAPTOR TO BOTTOM COWL
15	10-37978		2	SCREW, ADAPTOR TO ADAPTOR PLATE (3/4")
NS	12-26996		2	LOCKWASHER, ADAPTOR SCREW
16	24-28357		2	SPRING, ADAPTOR SCREW
17	11-20110		2	NUT, ADAPTOR SCREW

# BOTTOM COWL AND ADAPTOR PLATE

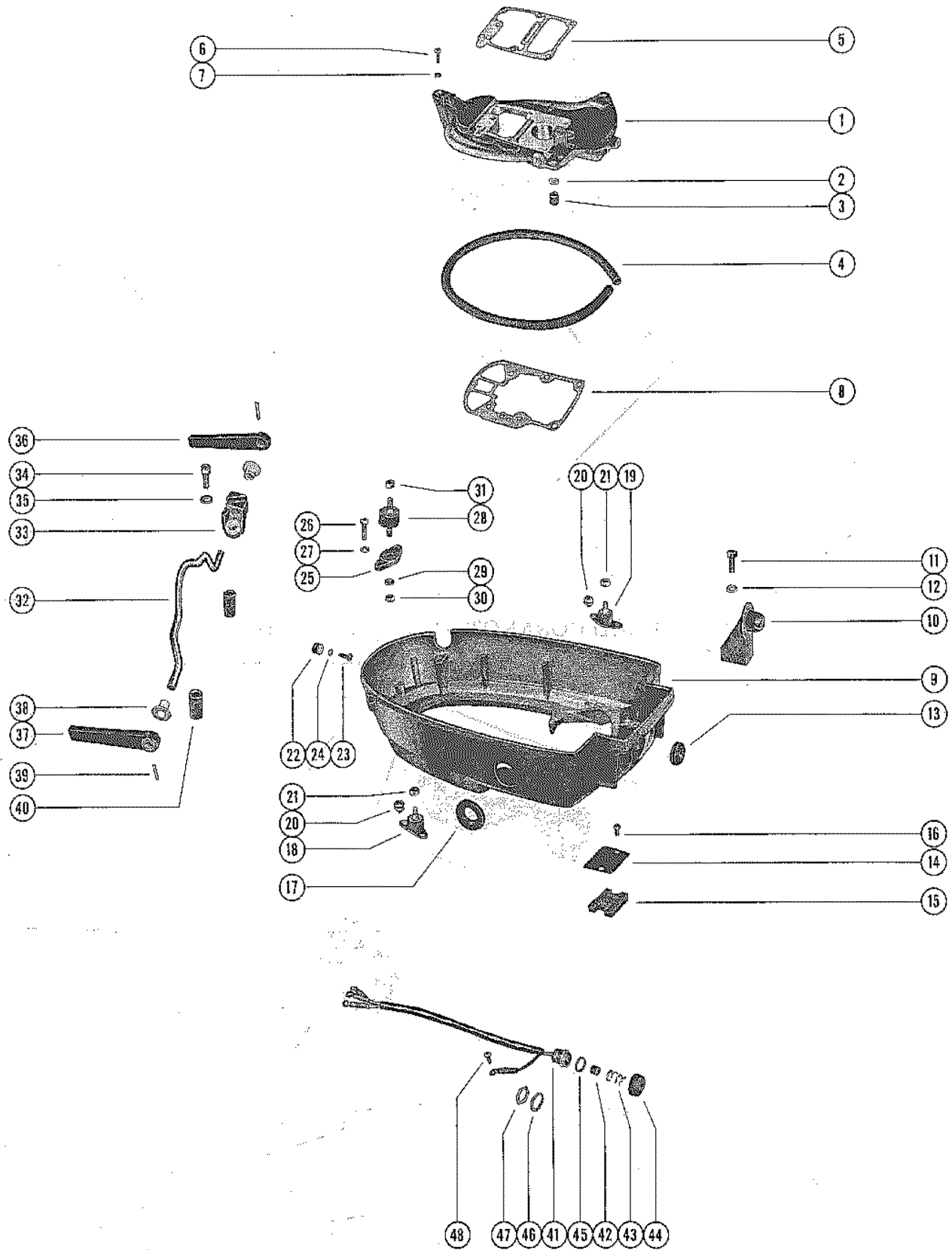


## BOTTOM COWL AND ADAPTOR PLATE

REF. NO.	PART NO.	SYM.	QTY.	DESCRIPTION
1	39028A3		1	ADAPTOR PLATE ASSEMBLY
	52402A1		1	ADAPTOR PLATE ASSEMBLY
2	12-36554		1	WASHER, NYLON - WATER OUTLET TUBE (ADAPTOR PLATE)
3	26-36556		1	SEAL, RUBBER - WATER OUTLET TUBE (ADAPTOR PLATE)
4	39044		1	SEAL, RUBBER - ADAPTOR PLATE
5	27-45748		1	GASKET, POWERHEAD PLATE <b>SERIAL #2080069-09999999</b>
	27-31557		1	GASKET, POWERHEAD TO ADAPTOR PLATE <b>SERIAL 00000000-#2080068</b>
	27-31557		1	GASKET, POWERHEAD TO ADAPTOR PLATE(USE THUR SERIAL #2080068)
6	10-22486		1	SCREW, ADAPTOR PLATE TO DRIVE SHAFT HOUSING (7/8")
7	13-26992		1	LOCKWASHER, ADAPTOR PLATE SCREW
8	27-52417		1	GASKET, ADAPTOR PLATE TO DRIVE SHAFT HOUSING
9	2124-2649		1	COWL, BOTTOM
10	39085		1	ANCHOR, LATCH - BOTTOM COWL
11	10-22485		2	SCREW, LATCH ANCHOR TO BOTTOM COWL (3/4")
12	13-26992		2	LOCKWASHER, LATCH ANCHOR SCREW
13	25-39054		1	GROMMET, CHOKE SHAFT - BOTTOM COWL
14	39051A1		1	PLATE ASSEMBLY, COVER - BOTTOM COWL
15	39068		1	PAD, SOUND - COVER PLATE
16	10-30009		2	SCRW, COVER PLATE TO BOTTOM COWL (3/8")
17	39058		1	SEAL, SHIFT HANDLE - BOTTOM COWL
18	39145		1	MOUNT, RUBBER _ BOTTOM COWL TO ADAPTOR PLATE (STARBOARD)
19	39144		1	MOUNT, RUBBER - BOTTOM COWL TO ADAPTOR PLATE (PORT)
20	10-31208		4	SCREW, RUBBER MOUNT TO BOTTOM COWL (3/8")
21	11-46887		2	NUT, ADAAPTOR PLATE TO RUBBER MOUNT
22	39565		1	SPOOL, NYLON - TOP COWL LATCHING (BOTTOM COWL)
23	10-20456		1	SCREW, NYLON SPOOL TO BOTTOM COWL (5/8")
24	13-26996		1	LOCKWASHER NYLON SPOOL SCREW
25	39147		1	ADAPTOR, REAR MOUNT TO BOTTOM COWL
26	10-22486		2	SCREW, REAR MOUNT ADAPTOR TO BOTTOM COWL (7/8")
27	13-26992		2	LOCKWASHER, REAR MOUNT ADAPTOR SCREW
28	39146		1	MOUNT, RUBBER - BOTTOM COWL TO ADAPTOR PLATE (REAR)
29	13-26992		1	LOCKWASHER, REAR MOUNT
30	11-20088		1	NUT, REAR MOUNT TO ADAPTOR
31	11-46887		1	NUT, ADAPTOR PLATE TO REAR RUBBER MOUNT
32	39087		1	ROD, COWL LATCH - BOTTOM COWL
33	39099		1	BRACKET, COWL LATCH ROD
34	10-22486		1	SCREW, COWL LATCH BRACKET TO BOTTOM COWL (15/16")
35	13-26992		1	LOCKWSHER, COWL LATCH BRACKET SCREW
36	39083		1	HANDLE, COWL LATCH ROD(PORT)

CONTINUED ON NEXT PAGE ➡

# BOTTOM COWL AND ADAPTOR PLATE



## BOTTOM COWL AND ADAPTOR PLATE

REF. NO.	PART NO.	SYM.	QTY.	DESCRIPTION
37	39098		1	HANDLE, COWL LATCH ROD (STARBOARD)
38	23-22981		2	BUSHING, NYLON - COWL LATCH ROD TO BOTTOM COWL
39	17-25319		2	PIN, ROLL - HANDLE TO COWL LATCH ROD
40	32-28373		2	SLEEVE, COWL LATCH ROD(EARLY MODELS ONLY)
-	<b>32372A2</b>		<b>1</b>	<b>STOP SWITCH ASSEMBLY</b>
41	32372		1	HARNESS, STOP SWITCH
42	30859		1	INSULATOR, SLEEVE - INNER SWITCH TERMINALS
43	24-30858A1		1	SPRING AND CONTACT ASSEMBLY
44	38950A1		1	COVER ASSEMBLY, STOP SWITCH
45	12-38949		1	WASHER, SEALING - STOP SWITCH
46	13-21972		1	LOCKWASHER, STOP SWITCH CONNECTOR
47	11-21971		1	NUT, STOP SWITCH TO BOTTOM COWL
48	10-30009		1	SCRW, STOP SWITCH LEAD TO BOTTOM COWL (3/8")

# PARTS INDEX

Part Number	Description	Pg.	Ref. No.	Part Number	Description	Pg.	Ref. No.
20203	DISC, FRICTINO	9	7	39145	MOUNT, RUBBER _		
20203	DISC, FRICTION	9	5		BOTTOM COWL TO		
20701A1	CLAMP PLATE ASSEMBLY	9	6		ADAPTOR PLATE		
20951	CO-PILOT DISC ASSEMBLY	9	19		(STARBOARD)	19	18
22477A4	THUMB SCREW ASSEMBLY	9	2	39146	MOUNT, RUBBER - BOTTOM		
22789	"D" WASHER, LEAD CLIP				COWL TO ADAPTOR		
	SCREW	3	18		PLATE (REAR)	19	28
24823A1	KNOB ASSEMBLY, HIGH			39147	ADAPTOR, REAR MOUNT		
	SPEED ADJUSTMENT				TO BOTTOM COWL	19	25
	SCREW	7	37	39148	SHAFT, CHCOKE LEVER TO		
25788	PLATE, CLAMPING-				CHOKE KNOB	15	5
	THROTTLE CABLE	3	27	39259	SPACER, FUEL PUMP	17	6
29493A1	THROTTLE LEVER			39326A1	SHIELD ASSEMBLY,		
	ASSEMBLY	15	1		STATOR PLATE	3	9
30859	INSULATOR, SLEEVE -			39565	SPOOL, NYLON - TOP COWL		
	INNER SWITCH				LATCHING (BOTTOM		
	TERMINALS	21	42		COWL)	19	22
31503A1	DIAPHRAGM KIT, FUEL			52400	BRACKET, MOUNTING-		
	PUMP	17	3		THROTTLE CABLE	3	21
31920A2	LEVER ASSEMBLY, CHOKE			52401	COVER, WATER PUMP		
	SHUTTER	15	4		HOUSING	13	30
32372	HARNES, STOP SWITCH	21	41	52402A1	ADAPTOR PLATE		
32372A2	STOP SWITCH ASSEMBLY	21	--		ASSEMBLY	19	1
32454	ADAPTOR, CHECK UNIT			52413A1	PILOT ASSEMBLY, DRIVE		
	(FUEL LINE)	17	13		SHAFT	13	13
33512	LEVER, TILT STOP	9	21	10-20055	SCREW, CLAMPING PLATE		
33904	RING, HOLD DOWN-STATOR				TO MOUNTING BRACKET		
	PLATE	3	12		(3/8")	3	28
34245	SHUTTER, CHOKE -			10-20217	SCREW, ANCHOR-TILT		
	CARBURATOR	15	12		STOP LEVER	9	22
34363A2	THROTTLE CAM BRACKET			10-20456	SCREW, NYLON SPOOL TO		
	ASSEMBLY	3	19		BOTTOM COWL (5/8")	19	23
38950A1	COVER ASSEMBLY, STOP			10-20845	SCREW (1/4")	15	NS
	SWITCH	21	44	10-20847	SCREW, THROTTLE STOP		
39028A3	ADAPTOR PLATE				LEVER	5	18
	ASSEMBLY	19	1	10-20854	SCREW, FLOAT BOWL		
39044	SEAL, RUBBER - ADAPTOR				COVER (SHORT)	5	10
	PLATE	19	4	10-21070	SCREW, CO-PILOT SPRING		
39051A1	PLATE ASSEMBLY, COVER -				GUIDE	11	7
	BOTTOM COWL	19	14	10-21625	SCREW, CLAMP PLATE		
39052	SEAL, ADAPTOR TO				MOUNTING	9	8
	BOTTOM COWL	17	14	10-22022	SCREW, PLUG (CHOKE		
39055	KNOB, CHOKE	15	10		SHUTTER STUD HOLE)	7	39
39058	SEAL, SHIFT HANDLE -			10-22485	SCREW, LATCH ANCHOR		
	BOTTOM COWL	19	17		TO BOTTOM COWL (3/4")	19	11
39068	PAD, SOUND - COVER			10-22486	SCREW, ADAPTOR PLATE		
	PLATE	19	15		TO DRIVE SHAFT		
39082A4	FUEL PUMP ASSEMBLY	17	1		HOUSING (7/8")	19	6
39083	HANDLE, COWL LATCH			10-22486	SCREW, COWL LATCH		
	ROD(PORT)	19	36		BRACKET TO BOTTOM		
39085	ANCHOR, LATCH - BOTTOM				COWL (15/16")	19	34
	COWL	19	10	10-22486	SCREW, REAR MOUNT		
39087	ROD, COWL LATCH -				ADAPTOR TO BOTTOM		
	BOTTOM COWL	19	32		COWL (7/8")	19	26
39098	HANDLE, COWL LATCH ROD			10-22928	SCREW, HIGH SPEED		
	(STARBOARD)	21	37		SCREW KNOB	7	38
39099	BRACKET, COWL LATCH			10-22956	SCREW, MOUNTING		
	ROD	19	33		BRACKET TO		
					CRANKCASE (7/8")	3	22



# PARTS INDEX

Part Number	Description	Pg.	Ref. No.	Part Number	Description	Pg.	Ref. No.
10-23178	SCREW, PLUG-MAIN NOZZLE	5	29	11-28010	NUT, PROPELLER	13	31
10-25822	SCREW, STRAINER COVER	5	17	11-46793	NUT, DRIVE SHAFT HOUSING TO GEAR HOUSING	13	32
10-25850	SCREW, FLOAT BOWL COVER(LONG)	5	11	11-46887	NUT, ADAAPTOR PLATE TO RUBBER MOUNT	19	21
10-27790	SCREW, RETAINING-TILT STOP LEVER	9	23	11-46887	NUT, ADAPTOR PLATE TO REAR RUBBER MOUNT	19	31
10-28405	SCREW, PLUG-MAIN FUEL JET CHANNEL	5	33	11-46887	NUT, CARBURETOR MOUNTING STUDS	7	43
10-28634	SCREW, GREASE FILLER	13	3	11-46887	NUT, DRIVE SHAFT HOUSING TO POWERHEAD STUDS	11	9
10-28642	SCREW, DRIVE-SERIAL PLATE TO SWIVEL BRACKET	9	--	11-46887	NUT, TILT STOP LEVER SCREW	9	25
10-28653	SCREW, GEAR HOUSING VENT	13	5	12-20214	WASHER, THUMB SCREW	9	3
10-28845	SCREW, PLUG-BODY CHANNEL	5	27	12-20260	WASHER, GREASE FILLER SCREW	13	4
10-29239	SCREW, THROTTLE LEVER TO CARBURETOR (1/2")	15	2	12-20262	WASHER, GEAR HOUSING VENT SCREW	13	6
10-29249	SCREW, FUEL PUMP TO SPACER (1")	17	5	12-20583	WASHER, CARBURETOR MOUNTING STUD	7	44
10-30009	SCREW, STATOR LEAD CLIP TO PORT COVER	3	17	12-26996	LOCKWASHER, ADAPTOR SCREW	17	NS
10-30009	SCRW, COVER PLATE TO BOTTOM COWL (3/8")	19	16	12-29245	WASHER, THROTTLE BRACKET SCREW	3	26
10-30009	SCRW, STOP SWITCH LEAD TO BOTTOM COWL (3/8")	21	48	12-30283	WASHER, CHOKE LEVER SHAFT	15	7
10-31208	SCREW, RUBBER MOUNT TO BOTTOM COWL (3/8")	19	20	12-36282	WASHER, FLYWHEEL NUT	3	2
10-31919	SCREW, CHOKE SHUTTER TO CARBURETOR (3/4")	15	13	12-36554	WASHER, NYLON - WATER OUTLET TUBE (ADAPTOR PLATE)	19	2
10-32228	SCREW, MOUNTING BRACKET TO CRANKCASE (5/8")	3	23	12-38949	WASHER, SEALING - STOP SWITCH	21	45
10-35400	SCREW, HOLD DOWN RING TO STATOR PLATE	3	13	13-20846	WASHER, WAVE-RETAINING SCREW	9	24
10-35450	SCREW, CAM BRACKET TO STATOR PLATE	3	20	13-21972	LOCKWASHER, STOP SWITCH CONNECTOR	21	46
10-37978	SCREW, ADAPTOR TO ADAPTOR PLATE (3/4")	17	15	13-22027	WASHER, WAVE-MAGNETO CAM TENSION	3	7
10-45742	SCREW, SHIELD TO STATOR PLATE	3	10	13-26992	LOCKWASHER, ADAPTOR PLATE SCREW	19	7
10-47277	SCREW, CO-PILOT ADJUSTING	9	20	13-26992	LOCKWASHER, CLAMP PLATE MOUNTING SCREW	9	9
10-52437	SCREW, THROTTLE BRACKET TO MOUNTING BRACKET (5/8")	3	24	13-26992	LOCKWASHER, LATCH ANCHOR SCREW	19	12
11-20083	NUT, CLAMP BRACKET STUD	9	17	13-26992	LOCKWASHER, REAR MOUNT	19	29
11-20088	NUT, REAR MOUNT TO ADAPTOR	19	30	13-26992	LOCKWASHER, REAR MOUNT ADAPTOR SCREW	19	27
11-20110	NUT, ADAPTOR SCREW	17	17	13-26992	LOCKWASHER, THROTTLE BRACKET SCREW	3	25
11-20110	NUT, PINION GEAR LOCKING	13	17	13-26992	LOCKWSHER, COWL LATCH BRACKET SCREW	19	35
11-20696	NUT, CLAMP BRACKET TO SWIVEL BRACKET STUD	9	13	13-26993	LOCKWASHER, CLAMP BRACKET STUD	9	16
11-20696	NUT, FLYWHEEL	3	1	13-26996	LOCKWASHER NYLON SPOOL SCREW	19	24
11-20849	NUT, PACKING-HIGH SPEED ADJUSTMENT SCREW	7	35				

# PARTS INDEX

Part Number	Description	Pg.	Ref. No.	Part Number	Description	Pg.	Ref. No.
13-26996	LOCKWASHER, CLAMPING PLATE ATTACHING SCREW	3	29	23-52442	SPACER, PROPELLER SHAFT	13	20
13-26996	LOCKWASHER, SHIELD SCREW	3	11	24-20229	SPRING, CO-PILOT TO DRIVE SHAFT HOUSING	11	6
13-34632	WASHER, WAVE - CHOKE SHUTTER SCREW	15	14	24-26890	SPRING, THROTTLE SHAFT RETURN	5	26
15-20695	SHIM, CLAMP BRACKET TO SWIVEL BRACKET (.010)	9	11	24-27160	SPRING, IDLE ADJUSTMENT SCREW	7	41
15-22759A1	SHIM ASSEMBLY, BALL BEARING TO GEAR HOUSING(.002-3-5)	13	11	24-28357	SPRING, ADAPTOR SCREW	17	16
15-33910015	SHIM, STATOR PLATE TO UPPER END CAP (.015)	3	15	24-30858A1	SPRING AND CONTACT ASSEMBLY	21	43
15-52439A1	SHIM ASSEMBLY, BALL BEARING(.002-3-5-10)	13	21	24-32283	SPRING, CHOKE SHUTTER TO LEVER	15	3
16-20657	STUD, CLAMP BRACKET	9	15	24-39040	SPRING, TENSION - CHOKE LEVER SHAFT	15	8
16-20694	STUD, CLAMP BRACKET TO SWIVEL BRACKET	9	12	25-21720	"O" RING, DRIVE SHAFT	13	12
16-23659	STUD, GEAR HOUSING TO DRIVE SHAFT HOUSING(3 11/16")	13	2	25-22762	"O" RING, WATER PUMP HOUSING	13	25
16-32698	STUD, DRIVE SHAFT HOUSING(1 13/16")	11	2	25-36284	"O" RING, FLYWHEEL HUB	3	3
17-20853	PIN, FLOAT LEVER PINION	5	3	25-39054	GROMMET, CHOKE SHAFT - BOTTOM COWL	19	13
17-20891	SWIVEL PIN, CO-PILOT DISC	9	10	26-36556	SEAL, RUBBER - WATER OUTLET TUBE (ADAPTOR PLATE)	19	3
17-22896	PIN, ROLL - CHOKE KNOB TO SHAFT	15	11	26-36556	SEAL, WATER TUBE	13	7
17-25319	PIN, ROLL - HANDLE TO COWL LATCH ROD	21	39	26-52414	OIL SEAL, WATER PUMP HOUSING	13	27
17-28848A2	TILT LOCK PIN ASSEMBLY	9	18	26-52415	OIL SEAL, DRIVE SHAFT PILOT	13	14
17-39076	PIN, IMPELLER DRIVE	13	29	27-22023	GASKET, CARBURETOR FLANGE	7	42
18-21071	COTTER PIN, CO-PILOT SPRING GUIDE SCREW	11	8	27-23180	GASKET, IDLE TUBE	5	22
18-25191	COTTER PIN, CHOKE LEVER SHAFT	15	9	27-25033	GASKET, INLET NEEDLE AND SEAT	5	7
19-20011	WELCH PLUG, BODY CHANNEL	5	25	27-25848	GASKET, STRAINER COVER SCREW	5	16
21-22974A3	CHECK VALVE ASSEMBLY	17	2	27-25849	GASKET, STRAINER COVER (SMALL)	5	14
22-33373	ELBOW, CYCLINDER BLOCK TO PRESSURE HOSE	17	10	27-28406	GASKET, JET CHANNEL PLUG SCREW	5	32
22-33373	ELBOW, FUEL PUMP SPACER TO PRESSURE HOSE	17	8	27-28409	GASKET, MAIN FUEL JET	5	31
22-39079	ELBOW, FUEL PUMP TO CARBURETOR	17	7	27-31557	GASKET, POWERHEAD TO ADAPTOR PLATE	19	5
23-20658	SPACER, CLAMP BRACKET STUD	9	14	27-31557	GASKET, POWERHEAD TO ADAPTOR PLATE(USE THUR SERIAL #2080068)	19	5
23-22981	BUSHING, NYLON - COWL LATCH ROD TO BOTTOM COWL	21	38	27-34614	GASKET, STRAINER COVER (LARGE)	5	12
23-26841	BUSHING, NYLON - CHOKE LEVER SHAFT	15	6	27-45748	GASKET, POWERHEAD PLATE	19	5
23-29669	BUSHING, UPPER	11	3	27-52417	GASKET, ADAPTOR PLATE TO DRIVE SHAFT HOUSING	19	8
23-29670	BUSHING, LOWER	11	4	28-20094	KEY, FLYWHEEL DRIVE	3	4
23-31313	SPACER, CHOKE SHUTTER SCREW	15	15	28-52438	KEY, PROPELLER GEAR TO PROPELLER SHAFT	13	23
23-34367	COLLAR, FLYWHEEL DUST SHIELD	3	6	30-25124	BEARING, BALL-DRIVE SHAFT	13	15
				30-52422	BEARING, BALL-PROPELLER SHAFT	13	19

# PARTS INDEX

Part Number	Description	Pg.	Ref. No.	Part Number	Description	Pg.	Ref. No.
31-52398	BEARING, ROLLER-DRIVE SHAFT	13	9	1399-3602	SHUTTER, THROTTLE	5	24
31-52440	BEARING, ROLLER-PROPELLER SHAFT	13	8	1399-3603	JET, MAIN FUEL-STANDARD	5	30
32-28373	SLEEVE, COWL LATCH ROD(EARLY MODELS ONLY)	21	40	1399-699	SHUTTER, THROTTLE	5	24
32-39484	HOSE, PRESSURE - FUEL PUMP (4 3/8")	17	9	1399-97	LEVER, THROTTLE STOP	5	19
32-39485	FUEL LINE, FUEL PUMP TO ADAPTOR (5 1/4")	17	12	1399-99	GASKET, FLOAT BOWL COVER	5	8
32-52459	TUBE, WATER INLET	11	5	1402-134A1	SWIVEL BRACKET ASSEMBLY	9	4
38-31042	SERIAL PLATE	9	--	1463-3557A1	CLAMP BRACKET ASSEMBLY	9	1
43-52423A1	GEAR ASSEMBLY (PINION AND PROPELLER)	13	16&22	1569-3556A1	DRIVE SHAFT HOUSING ASSEMBLY	11	1
44-52441	SHAFT, PROPELLER	13	18	1639-3558A1	GEAR HOUSING ASSEMBLY	13	1
45-52426	DRIVE SHAFT	13	10	1639-3558A2	GEAR HOUSING ASSEMBLY, COMPLETE	13	-
46-52399A1	WATER PUMP HOUSING ASSEMBLY	13	26	2124-2649	COWL, BOTTOM	19	9
47-39074	IMPELLER, WATER PUMP HOUSING	13	28				
54-20387	CLAMP, PRESSURE HOSE FASTENING	17	11				
54-24836	CLIP, STATOR LEAD	3	16				
90-39634	PARTS LIST	1	-				
219-2246A4	FLYWHEEL ASSEMBLY, COMPLETE	3	5				
398-2230	CAM, BREAKER	3	14				
398-2574A4	STATOR PLATE ASSEMBLY, COMPLETE(SEE NOTE BELOW)	3	8				
1334-1974A3	CARBURETOR ASSEMBLY, COMPLETE(OPTIONAL)	5	1				
1334-2697	CARBURETOR ASSEMBLY, COMPLETE	5	1				
1399-101	LEVER, FLOAT (UPPER)	5	5				
1399-102	LEVER, FLOAT (LOWER)	5	4				
1399-110A1	FLOAT ASSEMBLY	5	2				
1399-1133	COVER, FLOAT BOWL	5	9				
1399-1135	COVER, STRAINER	5	15				
1399-1138	INLET NEEDLE, SEAT AND GASKET	5	6				
1399-1519	SCREW, HIGH SPEED ADJUSTMENT	7	36				
1399-1716	SHAFT, THROTTLE	5	20				
1399-1717	GASKET AND PACKING SET	7	--				
1399-1754	SCREEN,FILTER	5	13				
1399-1765	JET, MAIN FUEL (.45)-STANDARD	5	30				
1399-1864	JET, MAIN FUEL (.043)	5	30				
1399-1896	JET, MAIN FUEL (.041)	5	30				
1399-1989	SCREW, IDLE ADJUSTMENT	7	40				
1399-1990	TUBE, IDLE	5	21				
1399-1991	MAIN NOZZLE	5	28				
1399-1992	REPAIR PARTS KIT	7	--				
1399-2037	TUBE, IDLE	5	21				
1399-2038	SCREW, IDLE ADJUSTMENT	7	40				
1399-2709	MAIN NOZZLE	5	28				
1399-2710	REPAIR PARTS KIT	7	--				